



LINEA

SUSPENDED CEILING
AND WALL CLADDING

INTERIOR



LAUDESCHER

LINEA

SUSPENDED CEILING
AND WALL CLADDING

INTERIOR



LAUDESCHER

THE COMPANY

PROJECTS

LINEA PRODUCTS

LINEA 3D PRODUCTS

INSTALLATION

OVERVIEW

Summary

1

The company

A committed and certified company 8

An active environmental approach 10

New technologies facilitating design 12

High performance panels..... 14

Combinations of species and finishes..... 16

2

Projects

LINEA RANGE

LES HALLES — PAU 20

LAW COURTS — POINTE-À-PITRE..... 22

NEW SCOTLAND YARD — LONDON 24

FINANCIAL CONDUCT AUTHORITY — LONDON 25

AUCHAN SHOPPING CENTRE — BORDEAUX-LAC 26

FRANCE BLEU BREIZH IZEL — QUIMPER 28

SWIMMING LEISURE CENTRE — SAINT-GILLES-CROIX-DE-VIE 30

ICADE PULSE — SAINT-DENIS..... 32

ESPACE ANGELOTTI — TOULOUSE 34

BANQUE POPULAIRE HEADQUARTERS — CHAMPS-SUR-MARNE..... 35

JAVA BATIGNOLLES 07 — PARIS..... 36

VEOLIA — AUBERVILLIERS..... 38

TRÈFLE HEALTH CAMPUS — GENEVA 39

LINEA 3D RANGE

LORE TTPIA RESTAURANT — BIDARRAY 40

AUDITORIUM 41

STORE 42

CONTEMPORARY HOUSE 43

OFFICES 44

3

Products

LINEA

LINEA 4.2.1	48
LINEA 4.2.4	50
LINEA 9.2.1	52
LINEA 9.2.3	54
LINEA 9.2.6	56
LINEA 2.4.3	58
LINEA 2.4.5	60
LINEA 2.6.5	62
LINEA 2.6.6	64
LINEA 2.6.8	66
LINEA 2.6.10	68
LINEA 2.9.8	70
LINEA 2.9.10	72
LINEA 2.9.13	74
LINEA SHAPE	76
LINEA SWELL	78

4

Products

LINEA 3D

LINEA 3D EDGE	82
LINEA 3D PIX	84
LINEA 3D SCALE	86
LINEA 3D BAMBOO	88
LINEA 3D BAMBOO WAVE	90

5

Installation

SUSPENDED CEILING INSTALLATION	
REQUIREMENTS FOR INSTALLATION	94
GENERAL VIEWS	95
SYSTEM DIMENSIONS	98
DISMOUNTING	99
WALL INSTALLATION	
GENERAL VIEWS	100
SYSTEM DIMENSIONS	101
VERTICAL INSTALLATION	102
HORIZONTAL INSTALLATION	104
LINEA SWELL INSTALLATION	
GENERAL VIEWS	106
INSTALLATION DETAILS	108
CUTTING PANELS	
SIMPLE CUT	110
ANGLED CUT	114
RANDOM CUT	116
INSERTING A FITTING	
INSERTION BETWEEN TWO COUNTER-SLATS	118
INSERTION BY MODIFYING COUNTER-SLATS	120
OPTIONS & ACCESSORIES	122

6

Overview

TECHNICAL COMPARISON	
LINEA RANGE	128
LINEA 3D RANGE	132
LINEA SHAPE AND LINEA SWELL .	133
VISUAL COMPARISON	
LINEA RANGE	134
LINEA 3D RANGE	136
LINEA SHAPE AND LINEA SWELL .	137
ADDRESSES AND CONTACTS . . .	
	138

1

The company

FOR GENERATIONS, LAUDESCHER HAS
FOCUSED ON PEOPLE AND INNOVATION TO
ENHANCE THE USE OF WOOD

A committed and certified company

Generations of passion and innovation

Combining boldness and pragmatism, Marcel Laudescher began his industrial adventure 50 years ago. He quickly abandoned normal joinery production and continued to innovate by developing his half-lap jointing technique, making Laudescher the French leader in screen walls. In 2002, Jean-Marc Laudescher, his elder son, bought 100% of the company and became the owner-manager. Stéphane, the younger son, manages production alongside his brother, developing this pioneering and innovative spirit, the DNA of this family with wood in its genes.



A certified company

Laudescher is committed to a quality strategy certified by independent organisations every year.

ISO **9001** (quality commitment)

FSC® LABEL – no. FSC-C125874

PEFC™ LABEL – PEFC no. /10-31-2391
(sustainable forest management)

CE marking



Sustainable approach

Responsible actions

Improving the company's carbon footprint throughout the life cycle of its products, from sourcing to recycling, is a priority objective at all levels of the company and a continuous improvement process.



Waste recycling

Waste is sorted and recycled through different industries.



Respect for resources

Our wood comes from sustainably managed forests (with FSC® or PEFC™ labels).



Energy savings

All energy consumption is scrutinised to identify possible efficiency savings. For example, the factory is heated using energy produced by recycling our wood chips, which is also the main energy supply for the drying ovens for finishing products. Recovering energy from compressors reduces electricity consumption.



Air quality

The raw materials selected by Laudescher, combined with the manufacturing process, offer optimum air quality.



New technologies facilitating design

A top-level technological and industrial facility

Located in Carentan-Les-Marais, in Cotentin, Normandy, the 7,500 m² plant built on a 20,000 m² industrial site houses highly efficient machinery, including a fully automatic cutting/3D-planing/length cutting line, 4-computer-digital-controlled machining centres, including 1 with 5 axes.



Design to imagine the shapes of the future

From a very early stage, Laudescher understood the importance of design in developing its product ranges, firstly by following trends to attract architects, project owners and customers, and secondly by being well designed, easier to produce and install. Laudescher has always driven partnerships with designers, or even acoustic engineers, to lead the company into new areas and help it build an essential vision of the future. For example, Laudescher recently called upon Woodlabo, a designers' collective, to design the LINEA 3D collection. There are still numerous development opportunities.



High performance panels



High acoustic performance

Our panels are specifically engineered to integrate standard acoustic absorbing tiles, increasing their acoustic performances. They can be used to control the sound environment in each type of space, from meeting rooms to auditoriums, based on certified results from laboratory tests.



Perfect finish

Guaranteed using the half-lap assembly technique, providing a flowing and sturdy finish to our solutions.



Optimum fire reaction

Up to Euroclass B-s1,d0 classification as per the EN 13501-1 standard



Solid wood with environmental certifications (FSC® or PEFC™)

All our wood is carefully selected to ensure high quality finished products (dry wood 10% to 12%, 1st grade). The vast majority is FSC® or PEFC™ certified, guaranteeing that the wood and wood-derived products used come from sustainably and responsibly managed forests. Laudescher panels produce little waste and are recyclable.

FSC® LABEL – no. FSC-C125874
PEFC™ LABEL – PEFC no. /10-31-2391



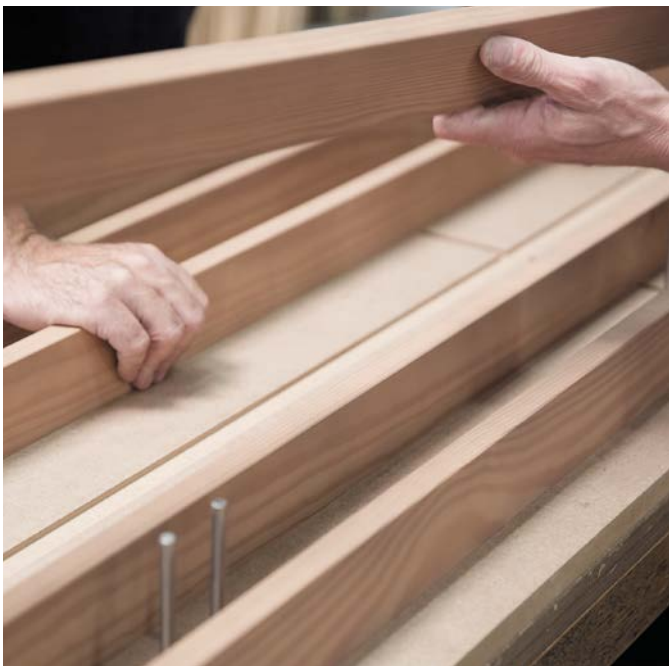
Air quality and respect for the environment

Laudescher panels rated A+ or A offer optimum interior air quality due to their very low VOC emissions (as per ISO 16000-3, -6, -9 and -11 standards). These results mean that Laudescher can contribute to HQE, BREEAM, LEED, Effinergie or Blue Angel accredited projects. The panels have an environmental product declaration (EPD).



Good moisture resistance

Using class 3 wood (risk class as per EN 335-2 and French NF B 50-100 standards) and appropriate finishes means our products can be used in humid environments.



Combinations of species and finishes

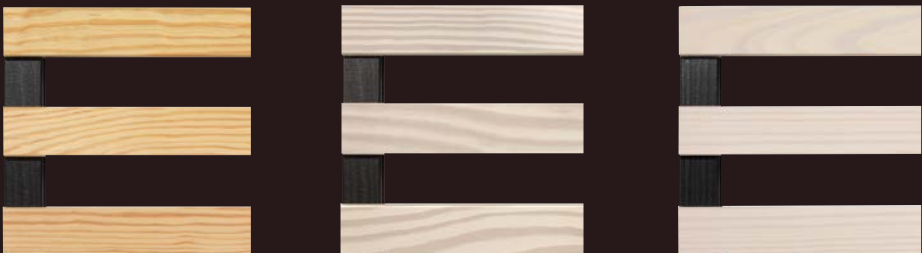


Natural species



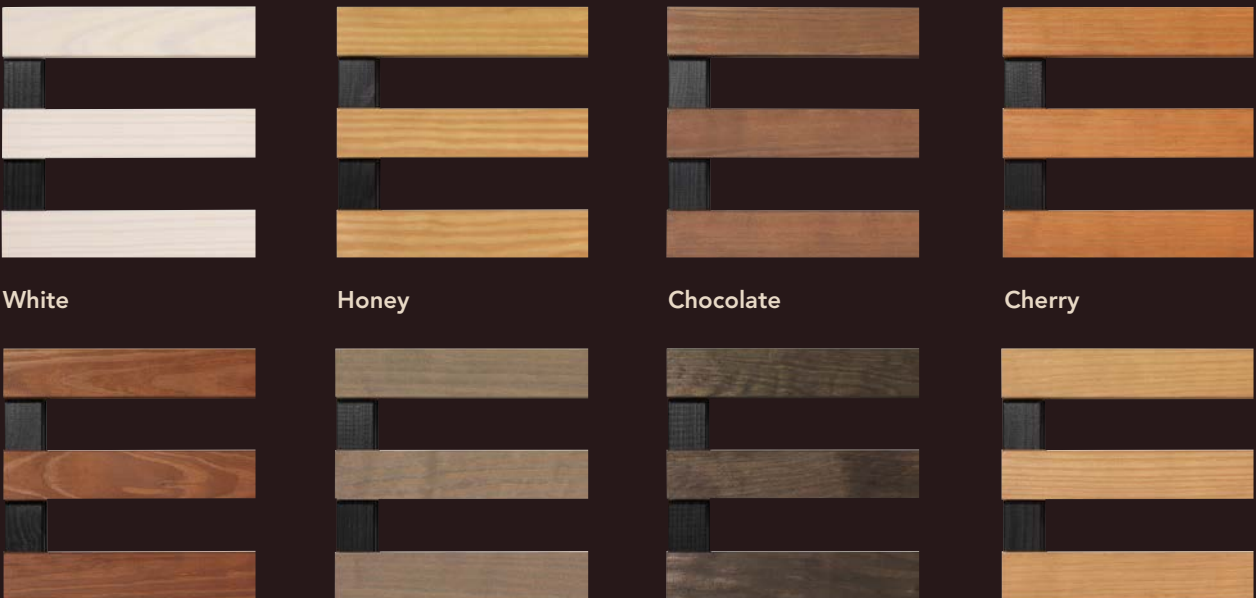
PineOakDouglas firSpruce

Varnished finishes



Clear varnishWhite Wash Soft varnishWhite Wash varnish

Wax Color finishes (varnish option available)



WhiteHoneyChocolateCherryMahoganyGreyWengeOak

2

Projects

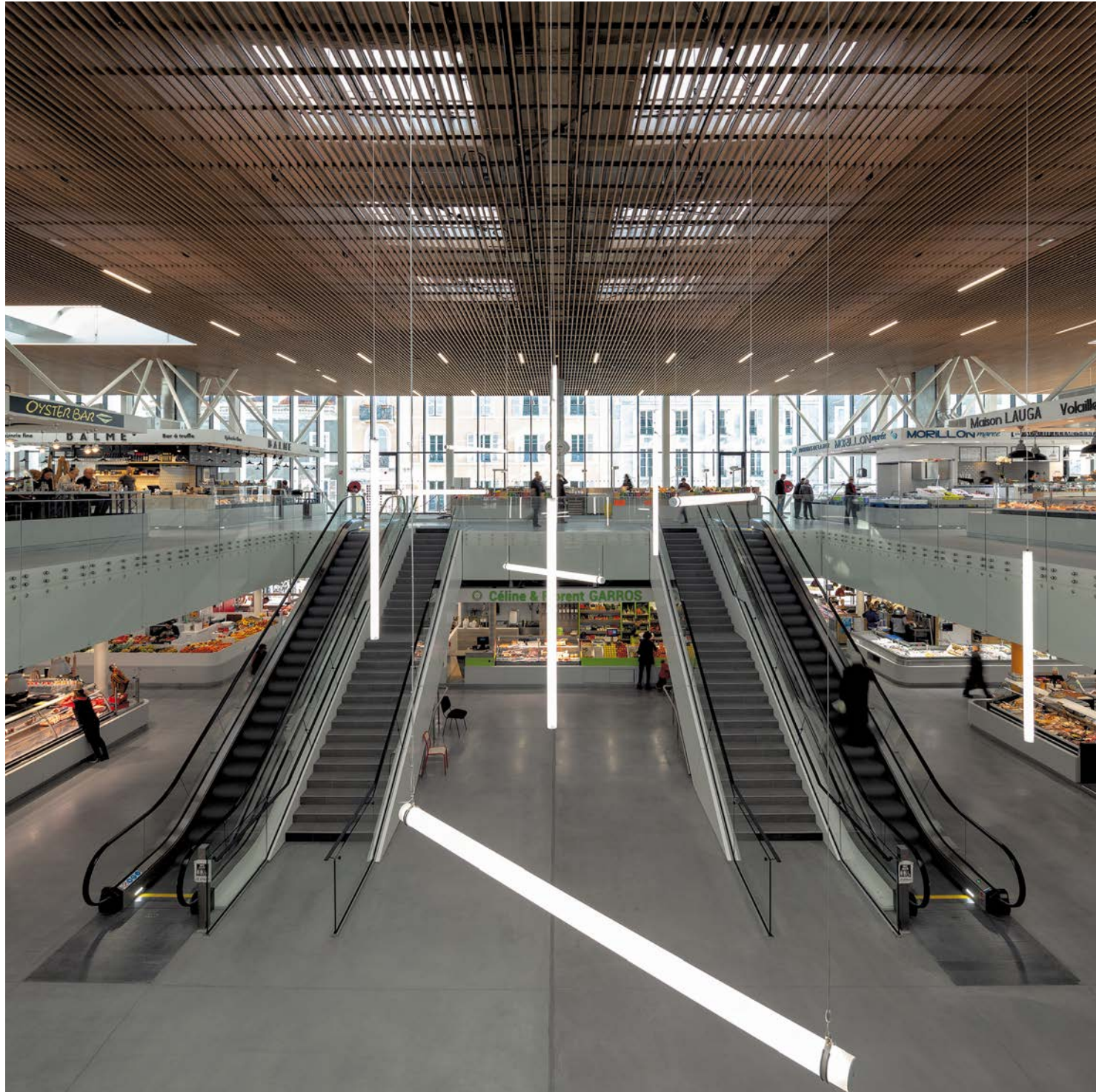
EACH YEAR, LAUDESCHER TAKES PART
IN MORE THAN 500 MAJOR PROJECTS
IN ALL BUSINESS SECTORS, IN FRANCE
AND INTERNATIONALLY.

Les Halles, Pau



Description

Location: Pau, France
Activity: shopping centre
Project owner: Pau city
Architect: Ameller Dubois
Products: **LINEA 2.6.10** ceiling + **LINEA 2.9.10**
Species: pine
Finish: Wax Color Oak



A redesign of
volumes in a
refurbished
historic site



Law Courts, Pointe-à-Pitre

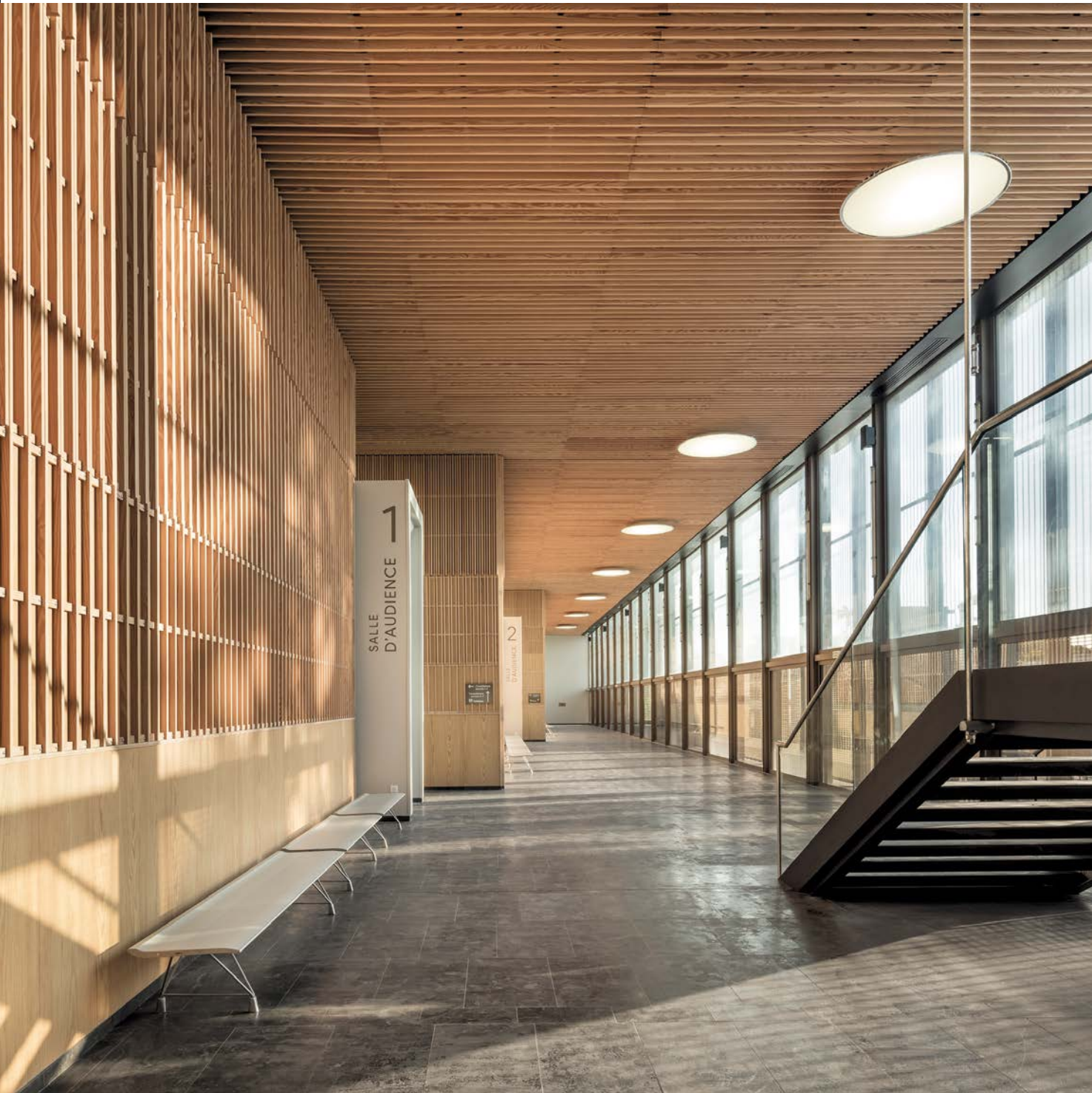


Description

Location: Pointe-à-Pitre, France
Activity: government
Project owner: French Public Agency for Court Buildings
Architect: Ignacio Prego Architecture
Products: bespoke **LINEA 2.6.8** ceiling / wall
LINEA 2.3.10 + LINEA 2.3-4.2-6 + LINEA 2.3-4-6.2
Species: pine
Finish: clear varnish



Shadows and lights



New Scotland Yard, London



Description

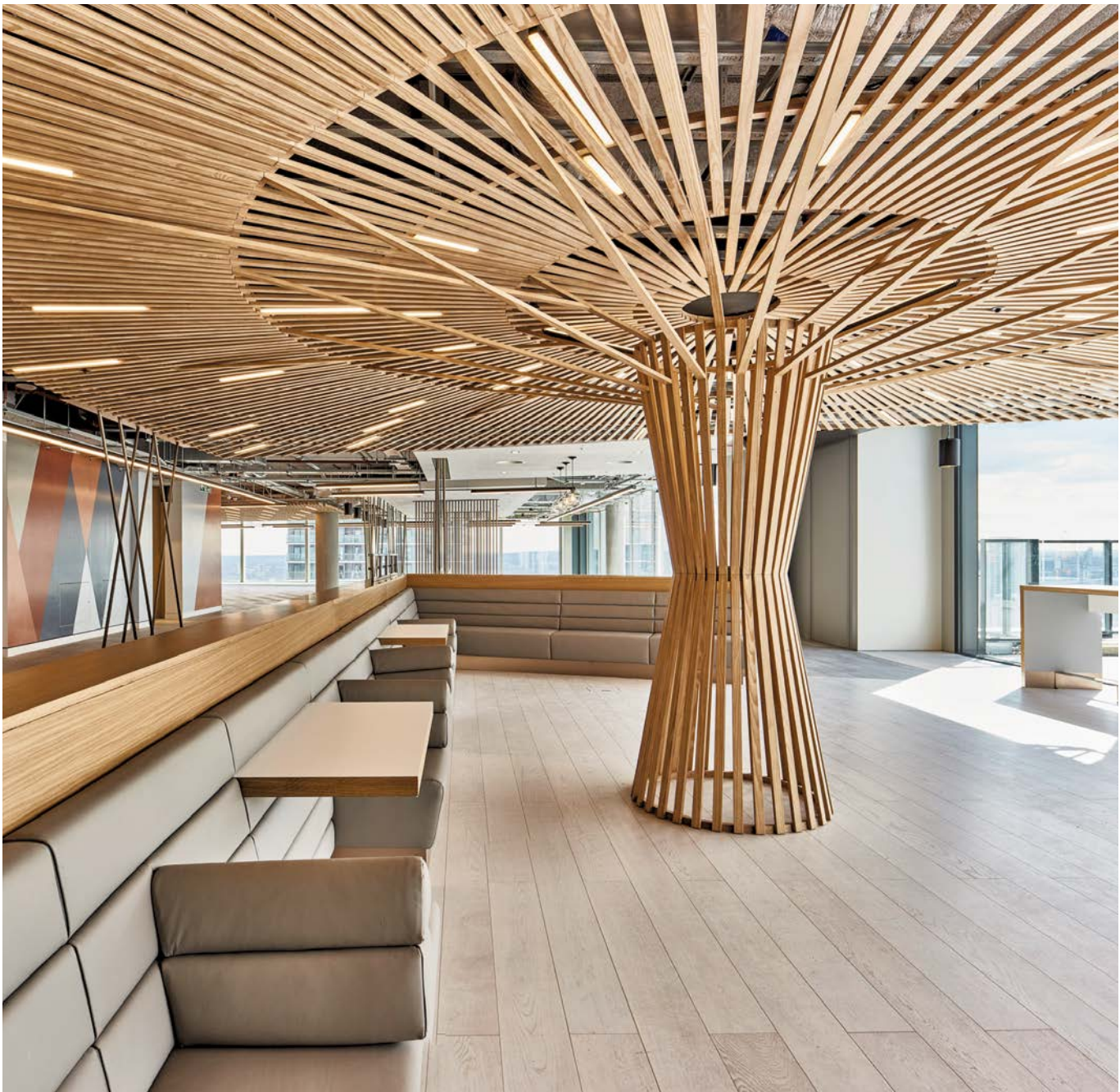
Location: London, UK
Activity: government
Project owner: Metropolitan Police Service and Mayor's Office for Policing and Crime
Architect: Allford Hall Monaghan Morris
Products: **LINEA 2.4.3** bespoke ceiling
Species: pine
Finish: Wax Color Oak

A BREEAM-certified project



© Photos: Timothy Soar

Financial Conduct Authority, London



© Photo: Laudescher

Bespoke space for a personalised reception

Description

Location: London, UK
Activity: offices
Project owner: Financial Conduct Authority
Architects: Perkins + Will
Products: **LINEA 4.2.4** bespoke ceiling
Species: pine
Finish: Bespoke Wax Color

Auchan Shopping Centre, Bordeaux-Lac



Description

Location: Bordeaux, France

Activity: shopping centre

Project owner: Immochan

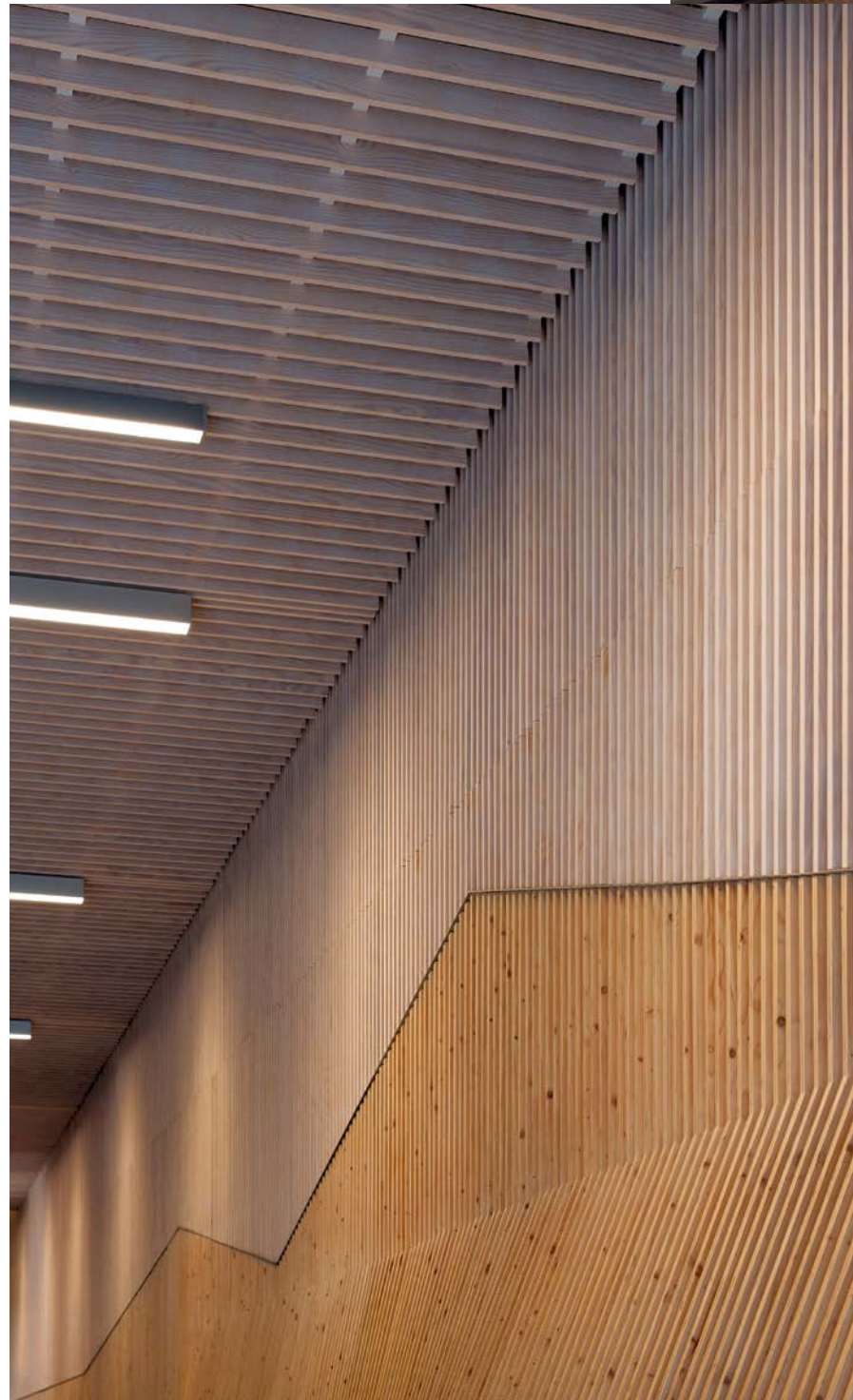
Architect: BLP & Associates

Products: **LINEA 2.6.4** ceiling and wall + **LINEA 2.6.10**

Species: pine

Finish: White Wash varnish

A warm
welcome



France Bleu Breizh Izel, Quimper

Description

Location: Quimper, France
Activity: offices
Project owner: Radio France
Architects: EA + LLA Architects
Products: **LINEA 2.6.6** + **SHAPE** ceiling
LINEA 2.6.6 wall
Species: pine
Finish: clear varnish



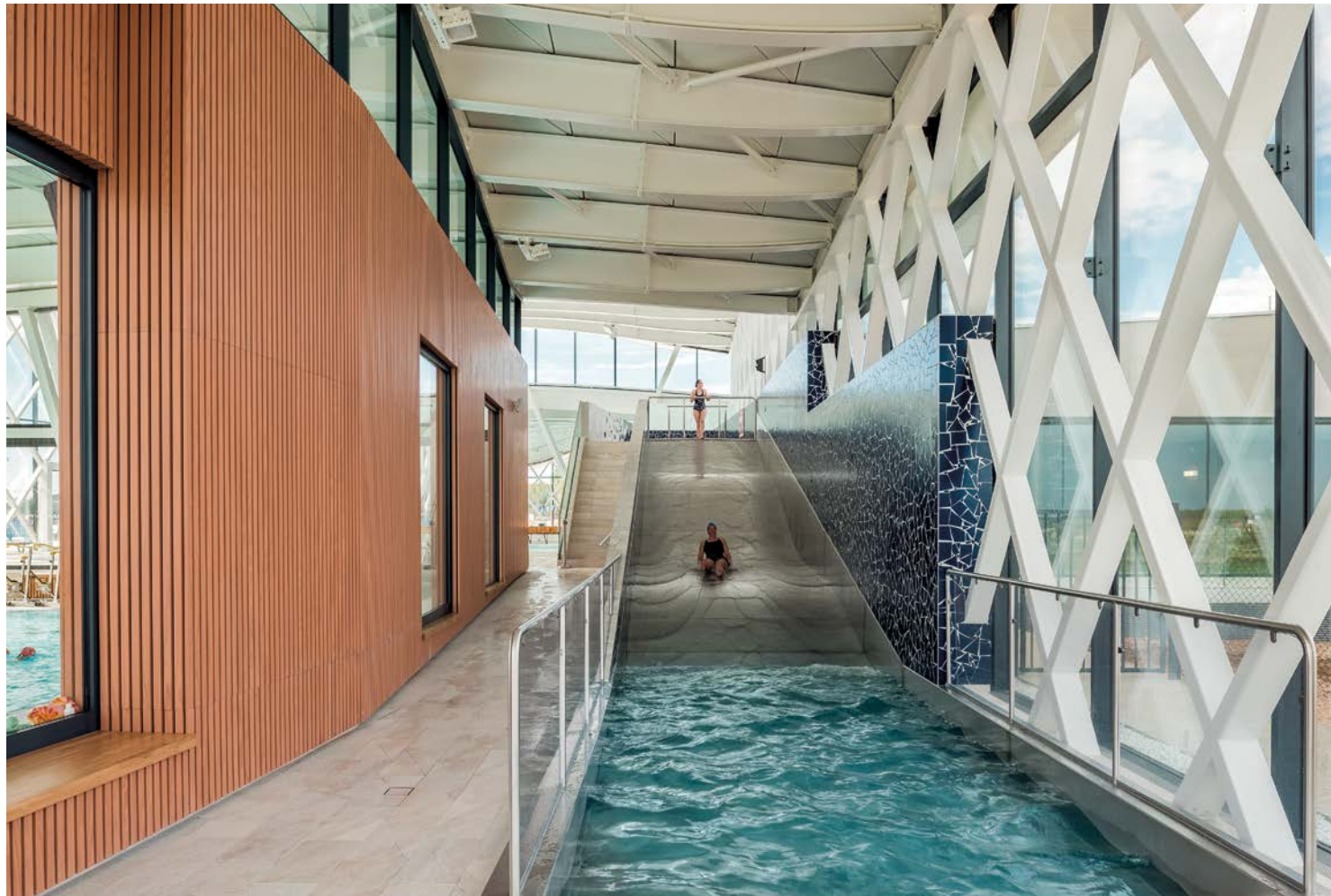
Silence: On Air



Swimming leisure centre, Saint-Gilles-Croix-de-Vie

Description

Location: Saint-Gilles-Croix-de-Vie,
France
Activity: sports facility
Project owner: Pays-de-Saint-Gilles-
Croix-de-Vie community council
Architect: BLP & Associates
Products: **LINEA 4.2.1** ceiling and wall
Species: pine
Finish: Wax Color Oak + varnish



Wood under all
conditions



Icade Pulse, Saint-Denis



Warmer mixed
common spaces

Description

Location: Saint-Denis, France
Activity: offices
Project owner: Icade
Architect: BFV Architects
Products: **LINEA 2.6.6** ceiling + **SHAPE** and **LINEA 4.2.1**
Species: pine
Finish: Wax Color Oak

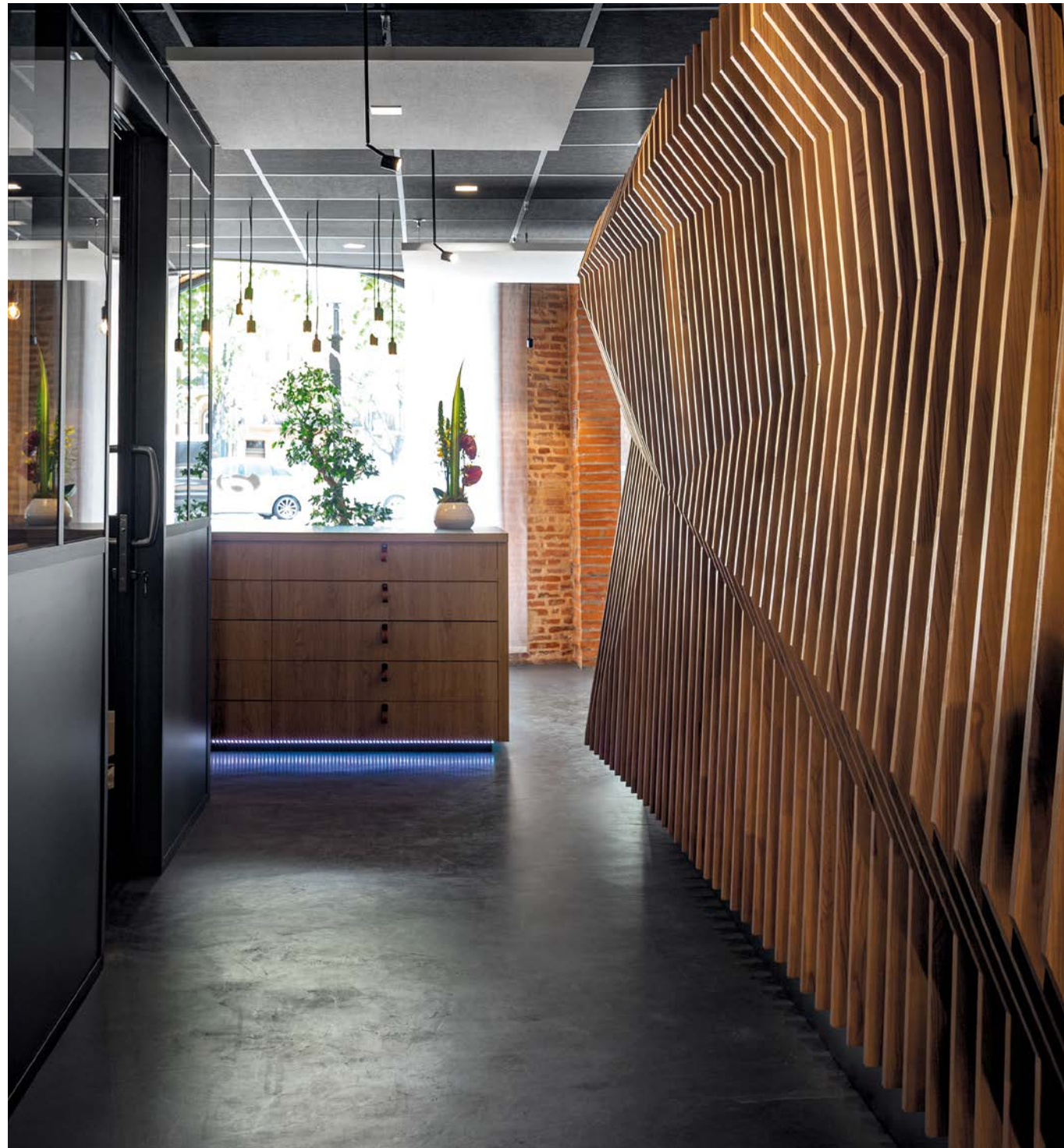


Espace Angelotti, Toulouse

Play on
geometry

Description

Location: Toulouse, France
Activity: showroom
Project owner: Angelotti Promotion
Space design: Noon collective
Product: bespoke **LINEA 2.23.8** wall
Species: pine
Finish: Wax Color Oak + varnish



Banque Populaire Head Office, Champs-sur-Marne

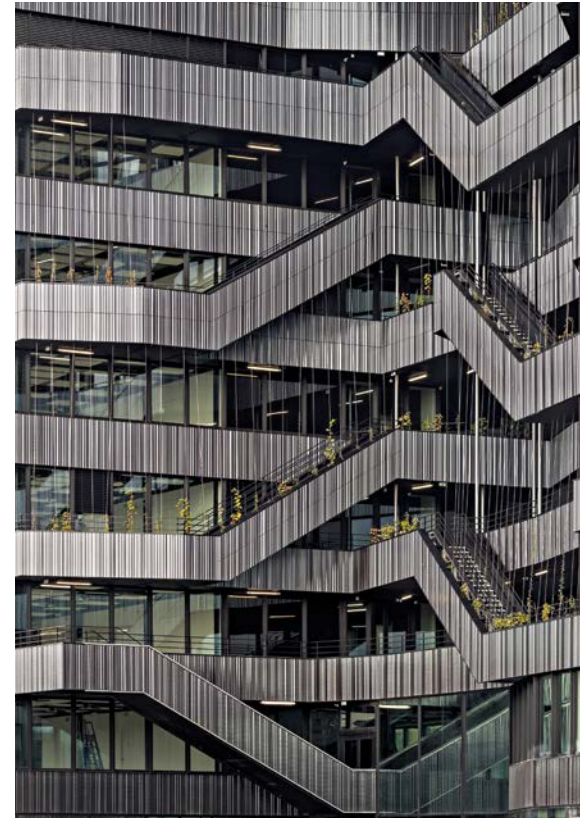
Wood, central
theme of spaces



Description

Location: Champs-sur-Marne, France
Activity: offices
Project owner: Les Nouveaux Constructeurs
Architect: Cosa Colboc
Sachet Architecture
Product: **LINEA 2.4.3** ceiling and wall
Species: pine
Finish: Wax Color Oak

Java Batignolles 07, Paris



Description

Location: Paris, France

Activity: offices

Project owner: Builders and partners

Architects: Brenac & Gonzalez and associates + Chartier Dalix

Products: ceiling and wall **LINEA 2.4.3** ceiling and wall and

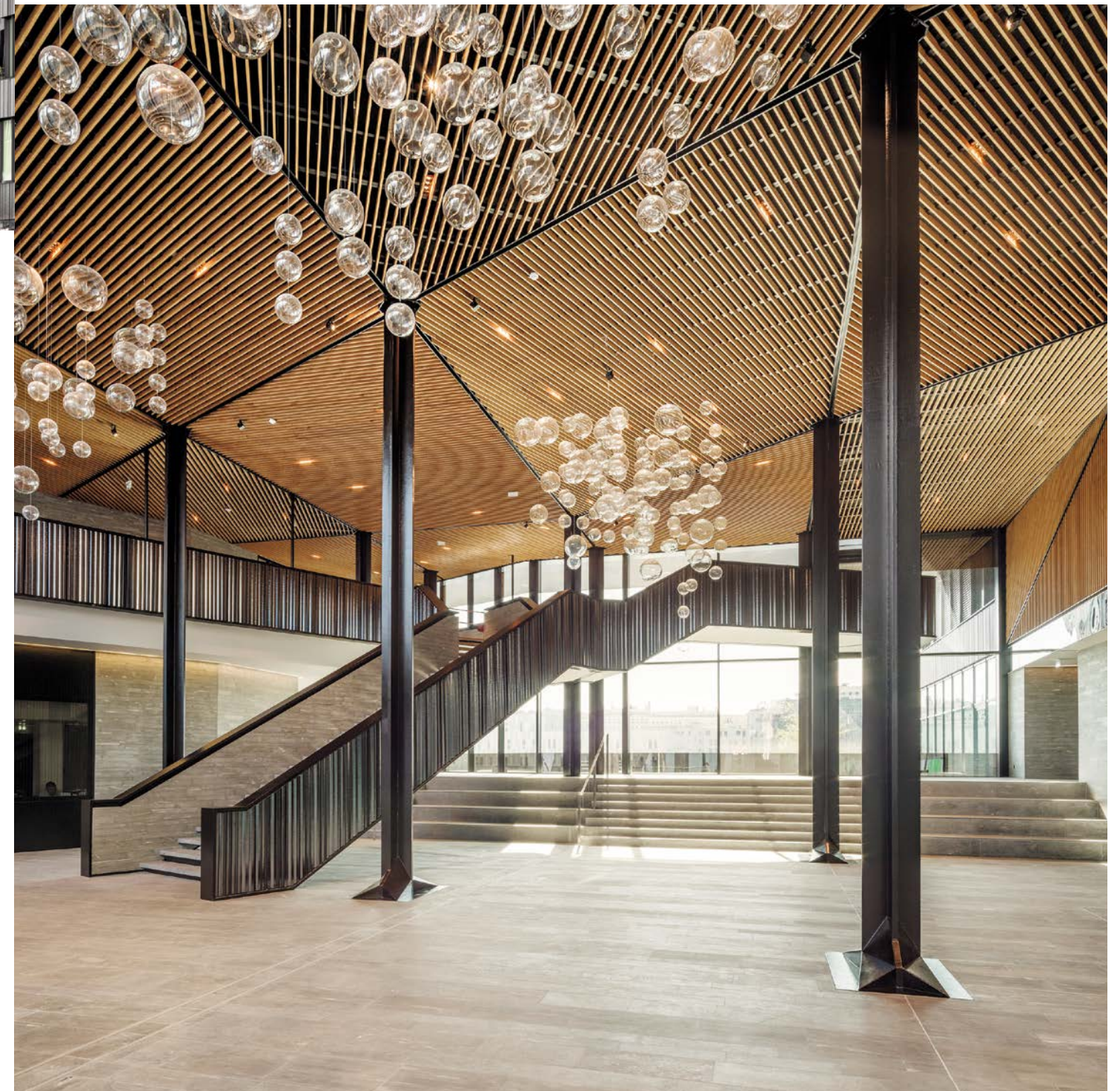
LINEA 2.6.8 ceiling

Species: pine

Finish: Wax Color Honey



Faceted ceilings



© Photos: Stefan Tuchila

Veolia, Aubervilliers

Description

Location: Aubervilliers, France
Activity: offices
Project owner: Icade
Architect:
Dietmar Feichtinger Architects
Product: ceiling and wall
LINEA 2.4.3
Species: linden
Finish: natural



© Photos: Laudescher

Quintessential
nature

Trèfle Global Health Campus, Geneva

Folded,
unfolded effect

Description

Location: Geneva, France
Activity: offices
Project owner: Crédit Suisse
Anlagestiftung Real
Architect: LRS
Product: **LINEA 2.4.3** ceiling and wall
Species: oak
Finish: clear varnish



© Photo: DMK Photography

Lore Restaurant Ttipia, Bidarray

Description

Location: Bidarray, France
Activity: restaurant
Project owner: Auberge Ostape
Architect: Joppin Architects DPLG & Associés
Product: **LINEA 3D SCALE** wall
Design: Woodlabo
Species: pine
Finish: Wax Color Honey



Classic
revisited



© Photo: Emmanuel Lattes

Auditorium

Description

Product: **LINEA 3D PIX** wall
Design: Woodlabo
Species: pine
Finish: Wax Color Blackr



© Credit: Laudescher

Acoustic
nest

Shop

Description

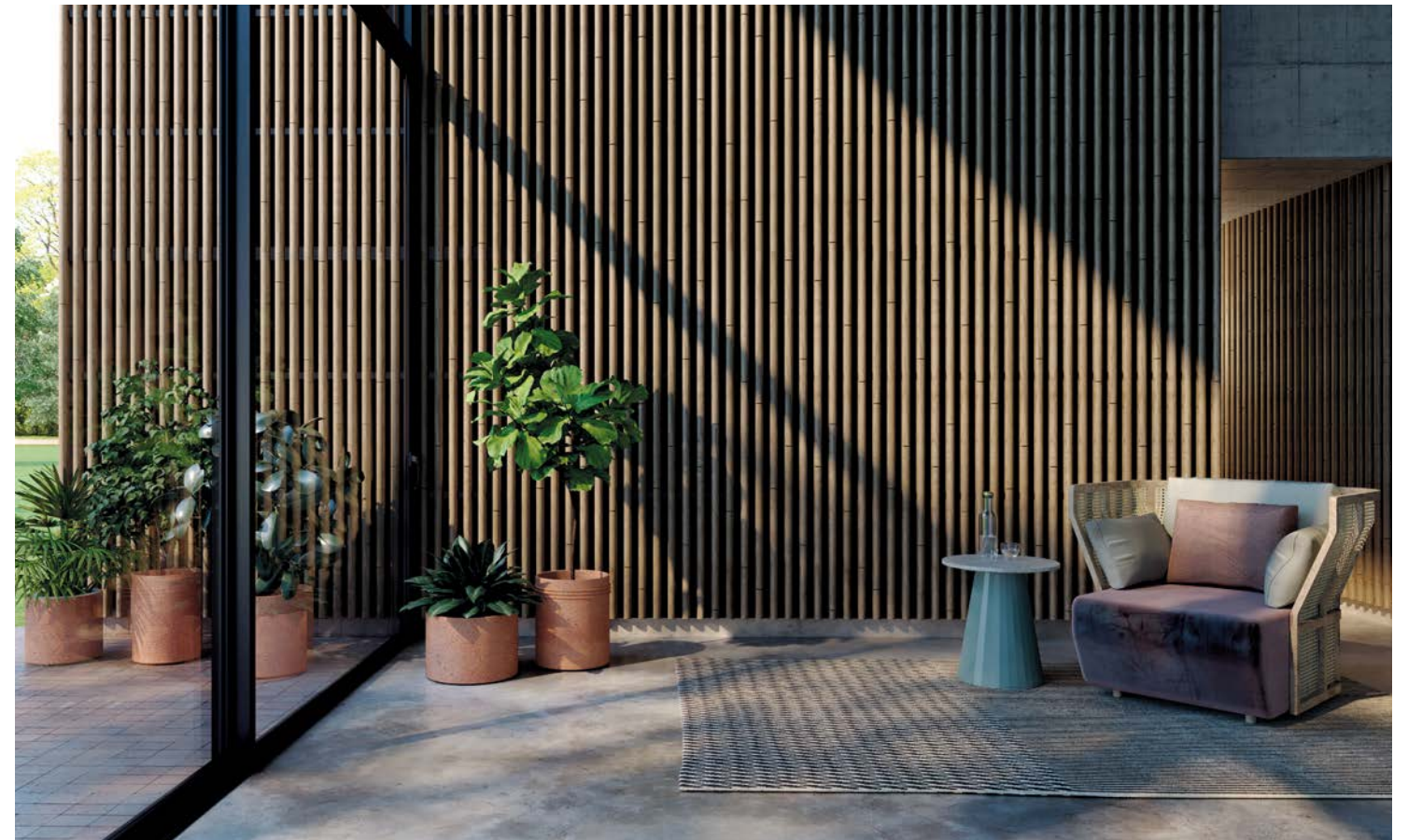
Product: **LINEA 3D EDGE** wall
Design: Woodlabo
Species: pine
Finish: Wax Color Grey

Wooden showcase



Contemporary home

Outdoor extension



Description

Product: **LINEA 3D BAMBOO** wall
Design: Woodlabo
Species: pine
Finish: Wax Color Grey



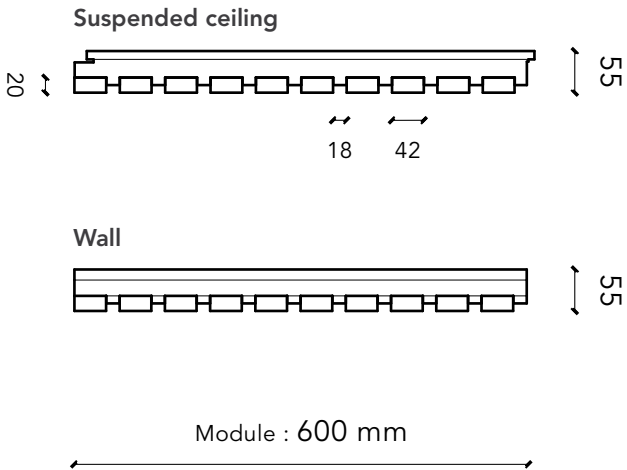
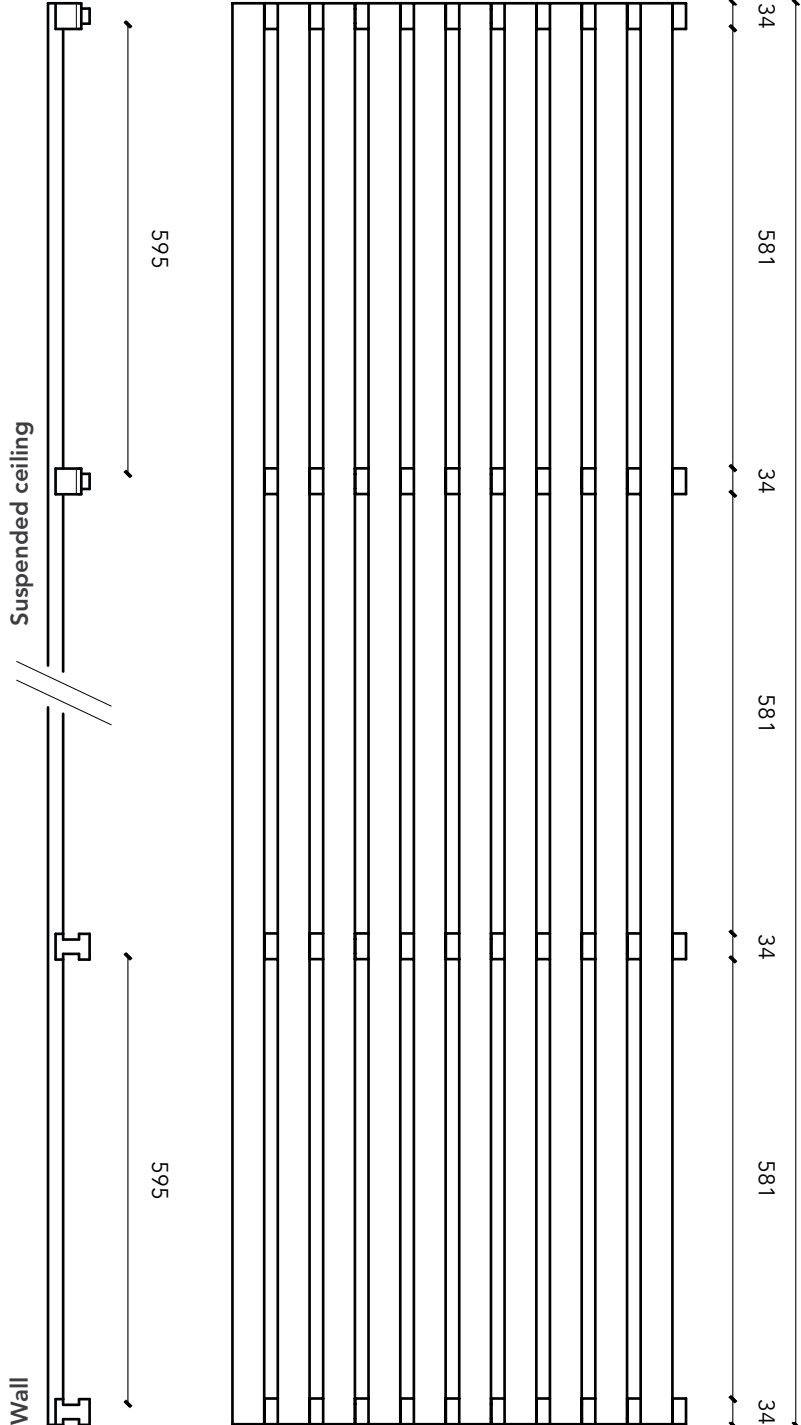
3

Products LINEA

INTERIOR
SUSPENDED CEILING & WALL CLADDING

LINEA 4.2.1

LINEA RANGE
INTERIOR



TECHNICAL CHARACTERISTICS

Panel dimensions	1880 x 600 mm and 1265 x 600 mm
Cross-section of slats	42 mm (face) x 20 mm (height)
Spacing between slats	18 mm
Centre distance of slats	60 mm
Black rear counter-slats	34 x 45 mm
Overall thickness	55 mm
Wood species	Pine, Oak, Douglas fir
Surface mass (pine)	11.4 kg/m ²
Surface mass (oak)	14.6 kg/m ²
Surface mass (douglas fir)	11.2 kg/m ²
Openness percentage	30%

Rear surface: acoustic mineral wool tiles 120 kg/m³ surfaced with black fleece facing (format : 600 x 600 mm; 20 mm or 22 mm thickness)
Not supplied by Laudescher

FITTING SYSTEM

Suspended ceiling

- Fitting on T24 grid system:
- As per DTU 58-1
- As per EN 13964

Wall cladding

- Mechanical fixing by screwing:
- As per DTU 36-2
- As per EN 14915

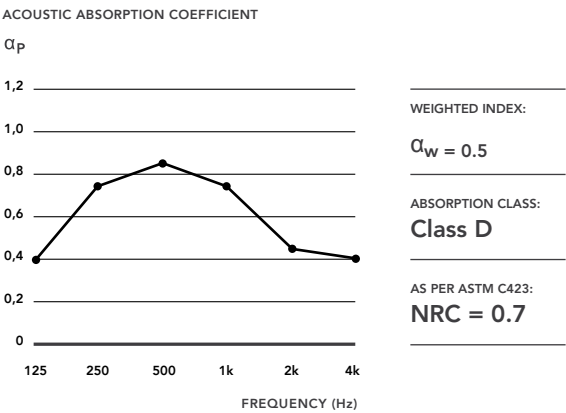
FINISH / REACTION TO FIRE (AS PER EN 13501-1)

Natural	D-s2,d0 / B-s1,d0 / B-s2,d0
Varnish	D-s2,d0 / B-s1,d0 / B-s2,d0
Wax Color	D-s2,d0 / B-s1,d0 / B-s2,d0
Wax Color + varnish	D-s2,d0 / B-s1,d0 / B-s2,d0

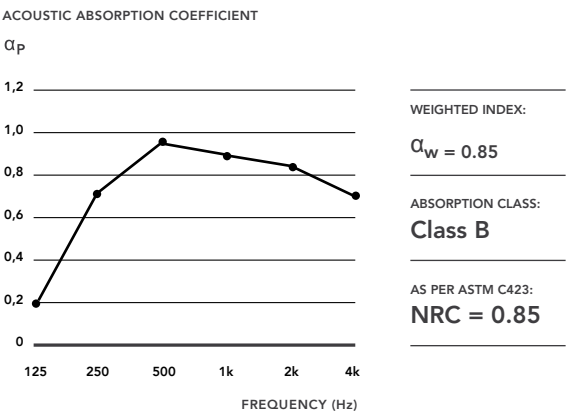
ACOUSTIC RESULTS

Acoustic absorption was measured as per the ISO 354 standard. The various data relating to acoustic absorption (α_p , α_w , absorption class) have been calculated according to ISO 11654 standard (LINEA + acoustic supplement).

LINEA 4.2.1 CEILING + LR 20mm on E250 mm plenum

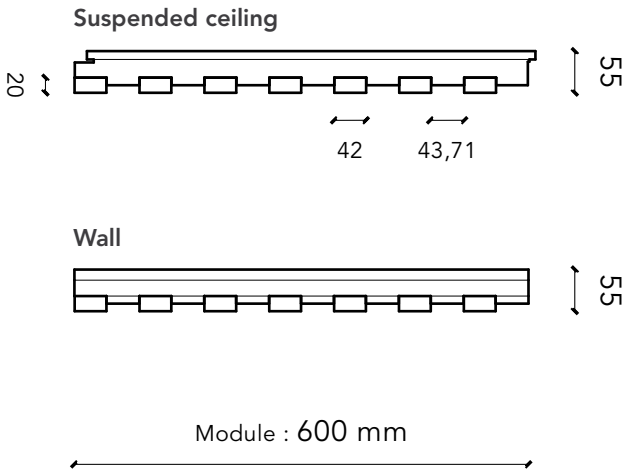
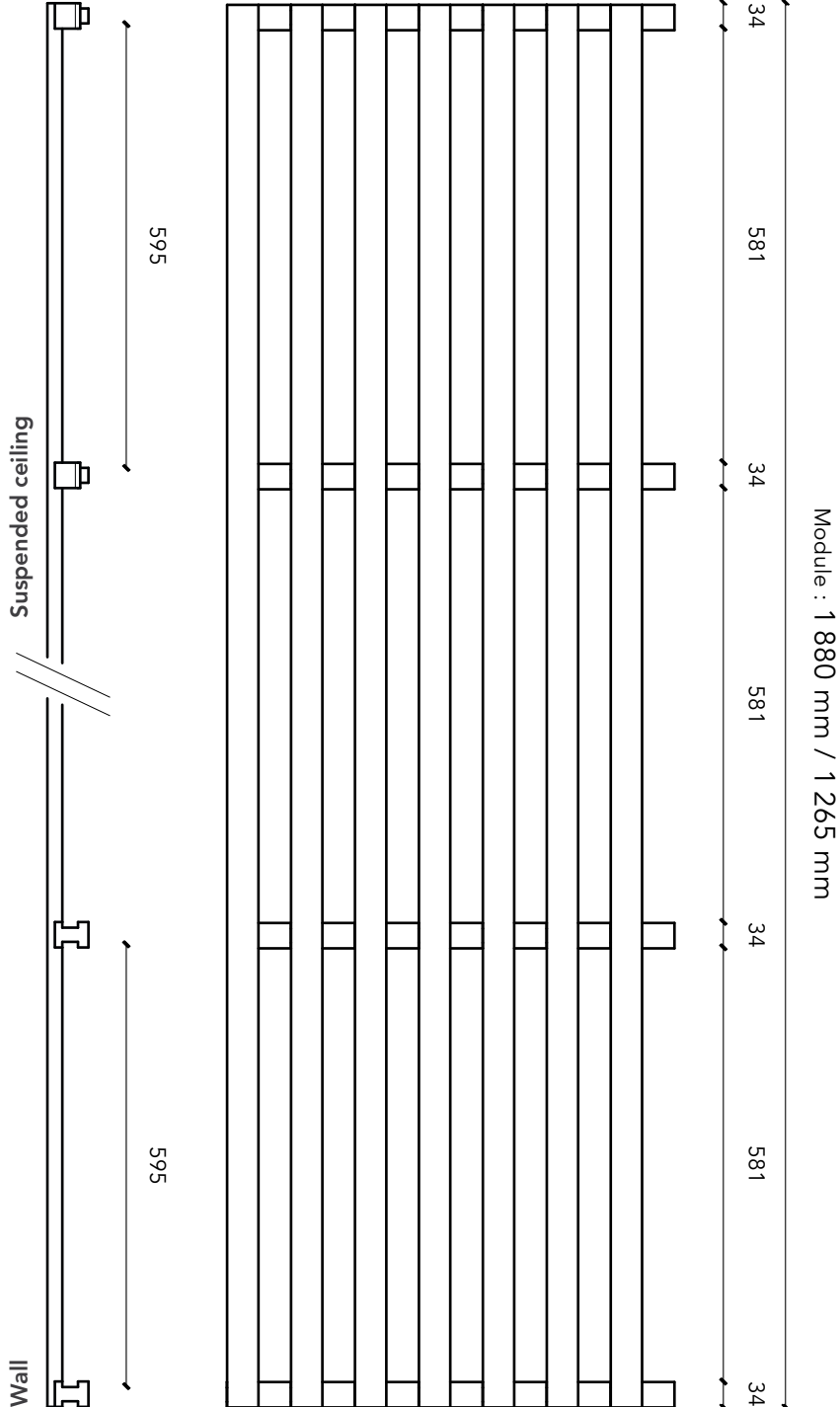


LINEA 4.2.1 WALL + LR 20mm on E50 mm plenum



LINEA 4.2.4

LINEA RANGE
INTERIOR



TECHNICAL CHARACTERISTICS

Panel dimensions	1880 x 600 mm and 1265 x 600 mm
Cross-section of slats	42 mm (face) x 20 mm (height)
Spacing between slats	43.71 mm
Centre distance of slats	85.71 mm
Black rear counter-slats	34 x 45 mm
Overall thickness	55 mm
Wood species	Pine, Oak, Douglas fir
Surface mass (pine)	8.75 kg/m ² (wall)
Surface mass (oak)	11 kg/m ² (wall)
Surface mass (douglas fir)	8.6 kg/m ² (wall)
Openness percentage	51%

Rear surface: acoustic mineral wool tiles 120 kg/m³ surfaced with black fleece facing (format : 600 x 600 mm; 20 mm or 22 mm thickness)
Not supplied by Laudescher

FITTING SYSTEM

- Suspended ceiling**

Fitting on T24 grid system:

 - As per DTU 58-1
 - As per EN 13964
- Wall cladding**

Mechanical fixing by screwing:

 - As per DTU 36-2
 - As per EN 14915

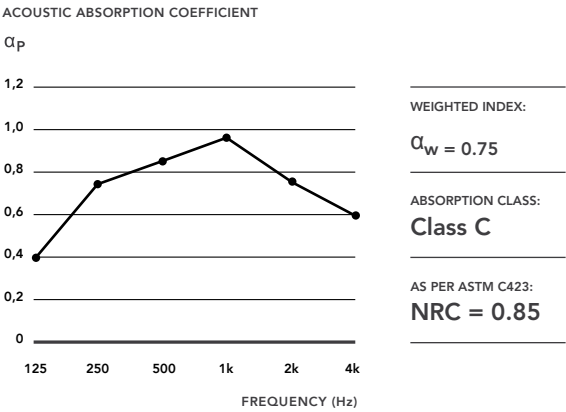
FINISH / REACTION TO FIRE (AS PER EN 13501-1)

Natural	D-s2,d0 / B-s1,d0 / B-s2,d0
Varnish	D-s2,d0 / B-s1,d0 / B-s2,d0
Wax Color	D-s2,d0 / B-s1,d0 / B-s2,d0
Wax Color + varnish	D-s2,d0 / B-s1,d0 / B-s2,d0

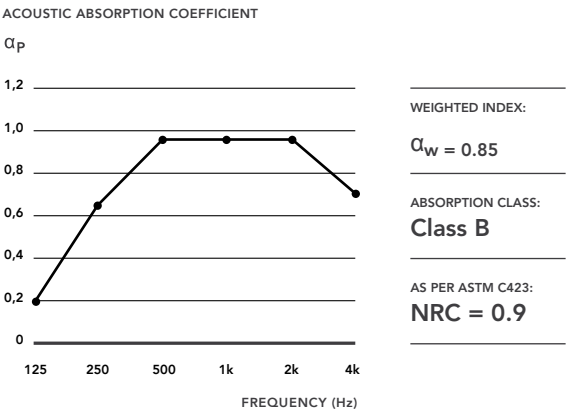
ACOUSTIC RESULTS

Acoustic absorption was measured as per the ISO 354 standard. The various data relating to acoustic absorption (α_p , α_w , absorption class) have been calculated according to ISO 11654 standard (LINEA + acoustic supplement).

LINEA 4.2.4 CEILING + LR 20mm on E250 mm plenum

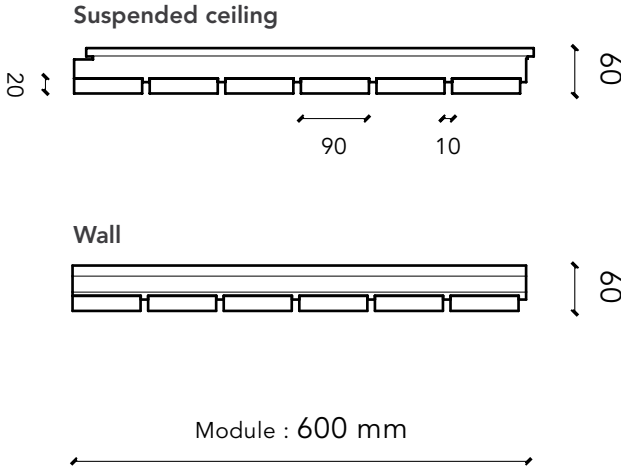
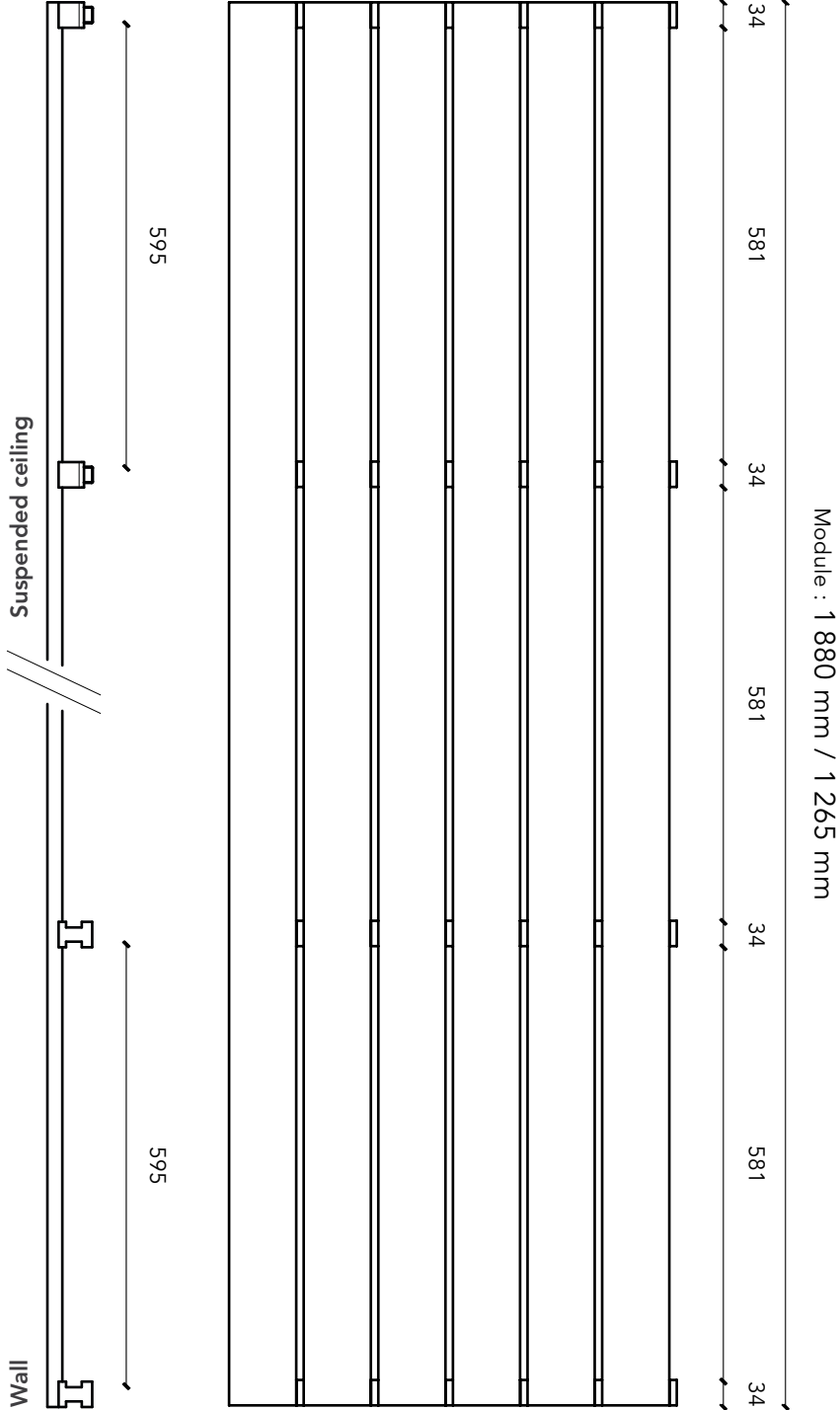


LINEA 4.2.4 WALL + LR 20mm on E50 mm plenum



LINEA 9.2.1

LINEA RANGE
INTERIOR



TECHNICAL CHARACTERISTICS

Panel dimensions	1880 x 600 mm and 1265 x 600 mm
Cross-section of slats	90 mm (face) x 20 mm (height)
Spacing between slats	10 mm
Centre distance of slats	100 mm
Black rear counter-slats	34 x 45 mm
Overall thickness	55 mm
Wood species	Pine, Oak, Douglas fir, Spruce
Surface mass (pine)	15.3 kg/m ²
Surface mass (oak)	19.4 kg/m ²
Surface mass (douglas fir)	15.1 kg/m ²
Surface mass (spruce)	13.1 kg/m ²
Openness percentage	10%

Rear surface: rigid acoustic rock wool tiles 120 kg/m³ surfaced with a black gauze (format : 600 x 600 mm; 20 mm or 22 mm thick)
Not supplied by Laudescher

FITTING SYSTEM

Suspended ceiling

- Fitting on T24 grid system:
- As per DTU 58-1
- As per EN 13964

Wall cladding

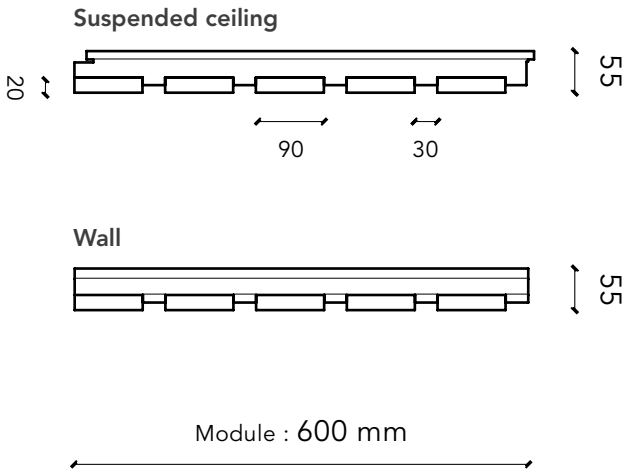
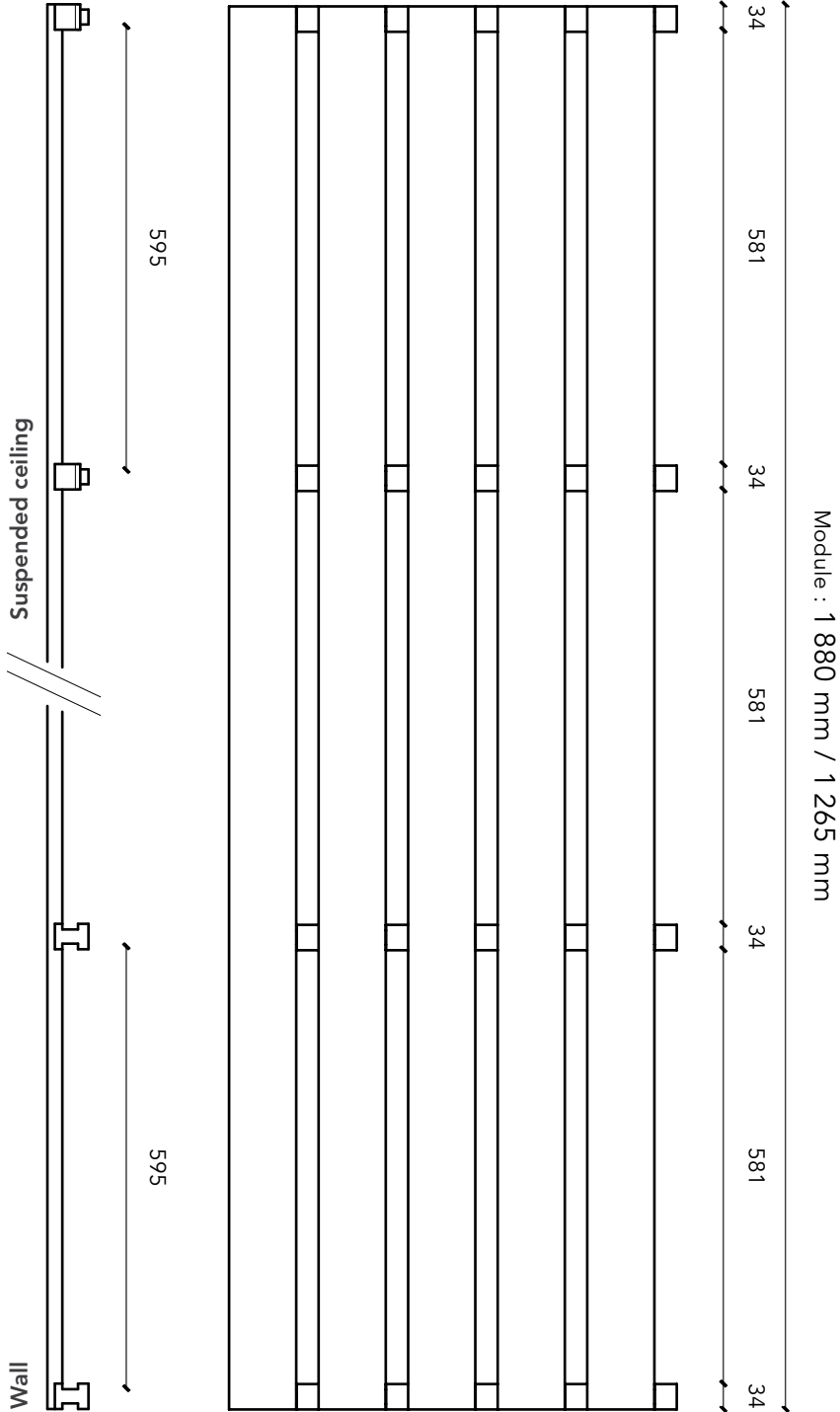
- Mechanical fixing by screwing:
- As per DTU 36-2
- As per EN 14915

FINISH / REACTION TO FIRE (AS PER EN 13501-1)

Natural	D-s2,d0 / B-s1,d0 / B-s2,d0
Clear varnish	D-s2,d0 / B-s1,d0 / B-s2,d0
Wax Color	D-s2,d0 / B-s1,d0 / B-s2,d0
Wax Color + varnish	D-s2,d0 / B-s1,d0 / B-s2,d0

LINEA 9.2.3

LINEA RANGE
INTERIOR



TECHNICAL CHARACTERISTICS

Panel dimensions	1880 x 600 mm and 1265 x 600 mm
Cross-section of slats	90 mm (face) x 20 mm (height)
Spacing between slats	30 mm
Centre distance of slats	120 mm
Black rear counter-slats	34 x 45 mm
Overall thickness	55 mm
Wood species	Pine, Oak, Douglas fir, Spruce
Surface mass (pine)	13.2 kg/m ²
Surface mass (oak)	16.6 kg/m ²
Surface mass (douglas fir)	13 kg/m ²
Surface mass (spruce)	11.4 kg/m ²
Openness percentage	25%

Rear surface: rigid acoustic rock wool tiles 120 kg/m³ surfaced with a black gauze (format : 600 x 600 mm; 20 mm or 22 mm thick)
Not supplied by Laudescher

FITTING SYSTEM

Suspended ceiling	Wall cladding
Fitting on T24 grid system: – As per DTU 58-1 – As per EN 13964	Mechanical fixing by screwing: – As per DTU 36-2 – As per EN 14915

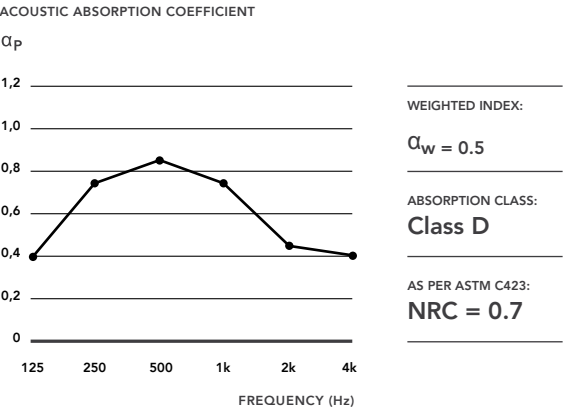
FINISH / REACTION TO FIRE (AS PER EN 13501-1)

Natural	D-s2,d0 / B-s1,d0 / B-s2,d0
Colourless varnish	D-s2,d0 / B-s1,d0 / B-s2,d0
Coloured wax	D-s2,d0 / B-s1,d0 / B-s2,d0
Coloured wax + varnish	D-s2,d0 / B-s1,d0 / B-s2,d0

ACOUSTIC RESULTS

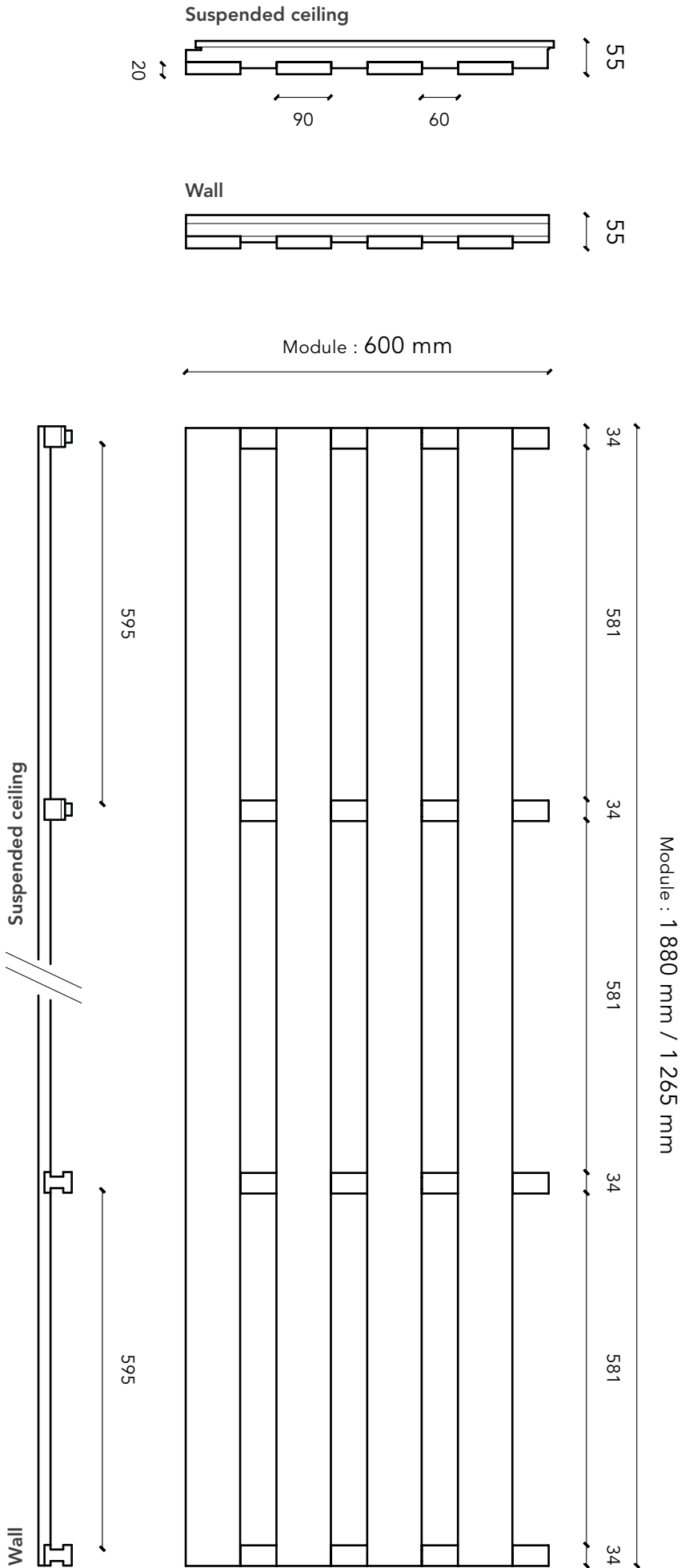
Acoustic absorption was measured as per the ISO 354 standard. The various data relating to acoustic absorption (α_p , α_w , absorption class) have been calculated according to ISO 11654 standard (LINEA + acoustic supplement).

LINEA 9.2.3 CEILING + LR 20 mm on E250 mm plenum



LINEA 9.2.6

LINEA RANGE
INTERIOR



TECHNICAL CHARACTERISTICS

Panel dimensions	1880 x 600 mm and 1265 x 600 mm
Cross-section of slats	90 mm (face) x 20 mm (height)
Spacing between slats	60 mm
Centre distance of slats	150 mm
Black rear counter-slats	34 x 45 mm
Overall thickness	55 mm
Wood species	Pine, Oak, Douglas fir, Spruce
Surface mass (pine)	11.1 kg/m²
Surface mass (oak)	13.8 kg/m²
Surface mass (douglas fir)	10.9 kg/m²
Surface mass (spruce)	9.6 kg/m²
Openness percentage	40%

Rear surface: rigid acoustic rock wool tiles 120 kg/m³ surfaced with a black gauze (format : 600 x 600 mm; 20 mm or 22 mm thick)
Not supplied by Laudescher

FITTING SYSTEM

Suspended ceiling	Wall cladding
Fitting on T24 grid system: – As per DTU 58-1 – As per EN 13964	Mechanical fixing by screwing: – As per DTU 36-2 – As per EN 14915

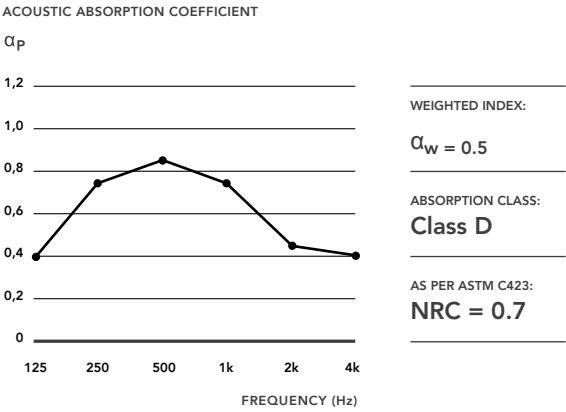
FINISH / REACTION TO FIRE (AS PER EN 13501-1)

Natural	D-s2,d0 / B-s1,d0 / B-s2,d0
Colourless varnish	D-s2,d0 / B-s1,d0 / B-s2,d0
Coloured wax	D-s2,d0 / B-s1,d0 / B-s2,d0
Coloured wax + varnish	D-s2,d0 / B-s1,d0 / B-s2,d0

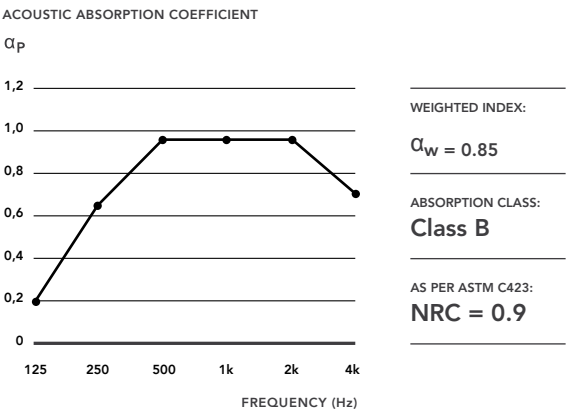
ACOUSTIC RESULTS

Acoustic absorption was measured as per the ISO 354 standard. The various data relating to acoustic absorption (α_p , α_w , absorption class) have been calculated according to ISO 11654 standard (LINEA + acoustic supplement).

LINEA 9.2.6 CEILING + LR 20mm on E250 mm plenum

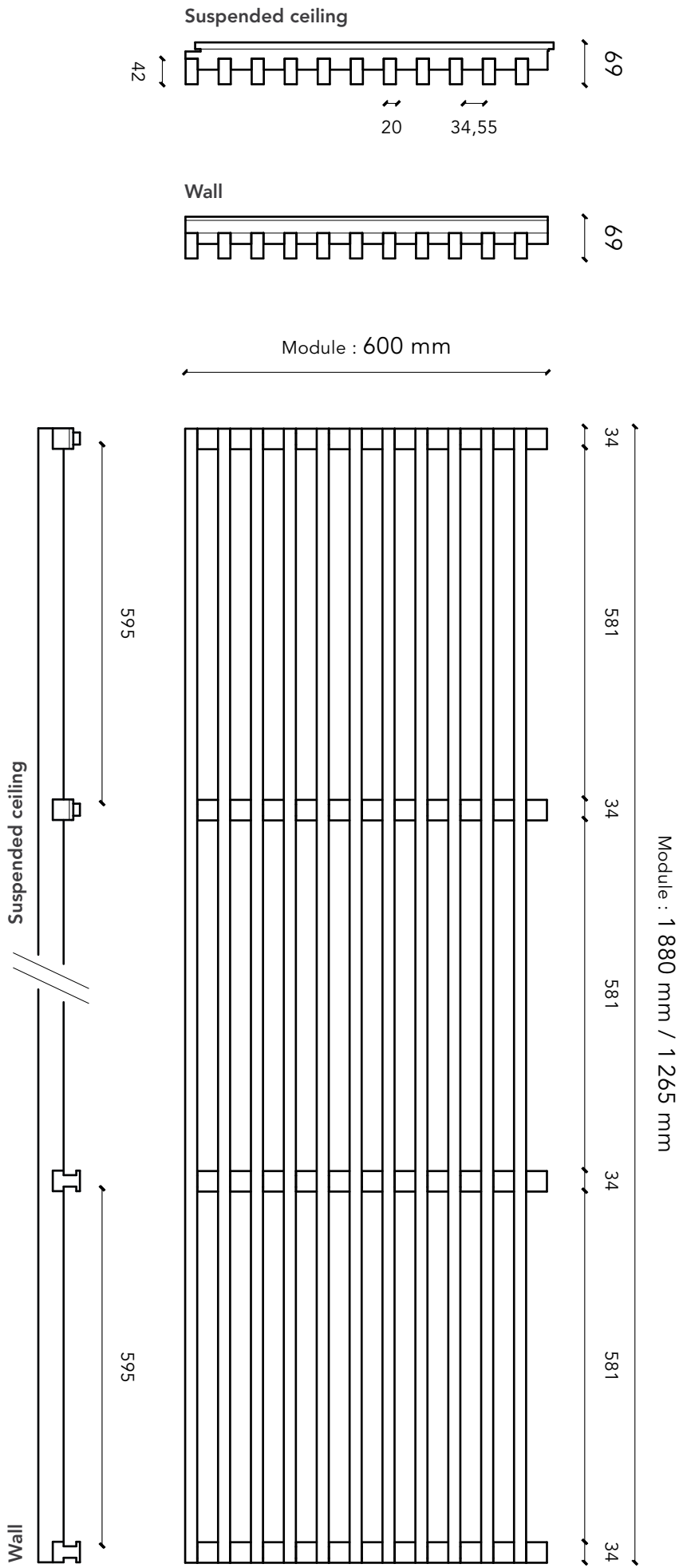


LINEA 9.2.6 WALL + LR 20mm on E50 mm plenum



LINEA 2.4.3

LINEA RANGE
INTERIOR



TECHNICAL CHARACTERISTICS

Panel dimensions	1880 x 600 mm and 1265 x 600 mm
Cross-section of slats	20 mm (face) x 42 mm (height)
Spacing between slats	34.54 mm
Centre distance of slats	54.54 mm
Black rear counter-slats	34 x 45 mm
Overall thickness	69 mm
Wood species	Pine, Oak, Douglas fir
Surface mass (pine)	12.4 kg/m²
Surface mass (oak)	16.1 kg/m²
Surface mass (douglas fir)	12.2 kg/m²
Surface mass (spruce)	–
Openness percentage	63%

Rear surface: rigid acoustic rock wool tiles 120 kg/m³ surfaced with a black gauze (format : 600 x 600 mm; 20 mm or 22 mm thick)
Not supplied by Laudescher

FITTING SYSTEM

Suspended ceiling	Wall cladding
Fitting on T24 grid system: – As per DTU 58-1 – As per EN 13964	Mechanical fixing by screwing: – As per DTU 36-2 – As per EN 14915

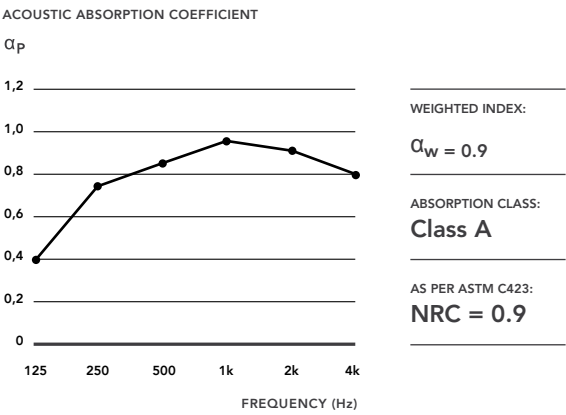
FINISH / REACTION TO FIRE (AS PER EN 13501-1)

Natural	D-s2,d0 / B-s1,d0 / B-s2,d0
Varnish	D-s2,d0 / B-s1,d0 / B-s2,d0
Wax Color	D-s2,d0 / B-s1,d0 / B-s2,d0
Wax Color + varnish	D-s2,d0 / B-s1,d0 / B-s2,d0

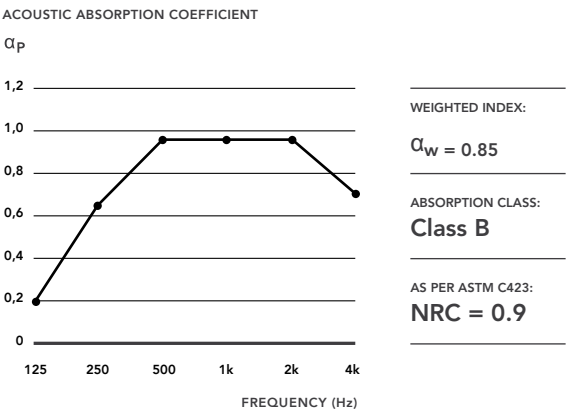
ACOUSTIC RESULTS

Acoustic absorption was measured as per the ISO 354 standard. The various data relating to acoustic absorption (α_p , α_w , absorption class) have been calculated in compliance with the ISO 11654 standard (LINEA + acoustic supplement).

LINEA 2.4.3 CEILING + LR 20mm on E250 mm plenum

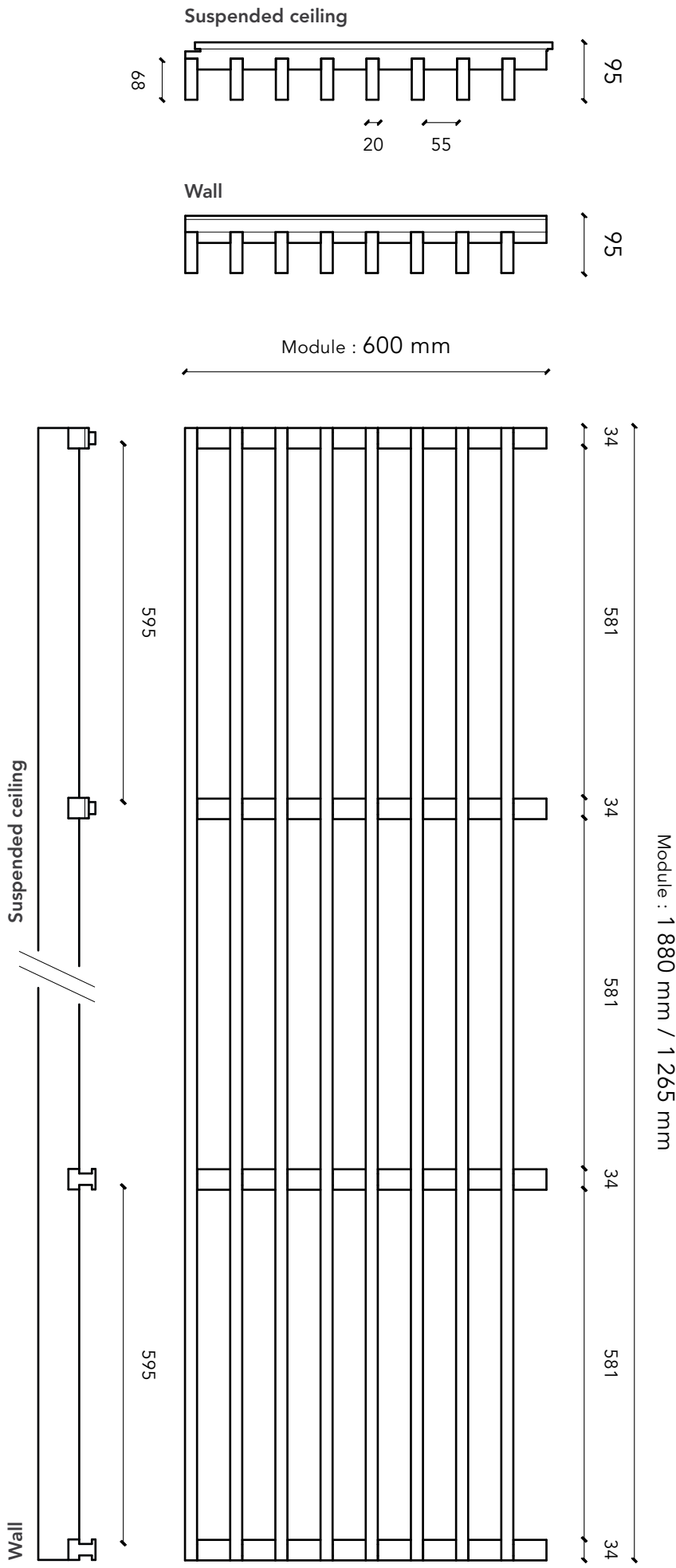


LINEA 2.4.3 WALL + LR 20mm on E50 mm plenum



LINEA 2.6.5

LINEA RANGE
INTERIOR



TECHNICAL CHARACTERISTICS

Panel dimensions	1880 x 600 mm and 1265 x 600 mm
Cross-section of slats	20 mm (face) x 68 mm (height)
Spacing between slats	55 mm
Centre distance of slats	75 mm
Black rear counter-slats	34 x 45 mm
Overall thickness	95 mm
Wood species	Pine, Oak, Douglas fir
Surface mass (pine)	15.4 kg/m ²
Surface mass (oak)	19.5 kg/m ²
Surface mass (douglas fir)	15.2 kg/m ²
Openness percentage	73%

Rear surface: acoustic mineral wool tiles 120 kg/m³ surfaced with black fleece facing (format : 600 x 600 mm; 20 mm or 22 mm thickness)
Not supplied by Laudescher

FITTING SYSTEM

Suspended ceiling

- Fitting on T24 grid system:
- As per DTU 58-1
- As per EN 13964

Wall cladding

- Mechanical fixing by screwing:
- As per DTU 36-2
- As per EN 14915

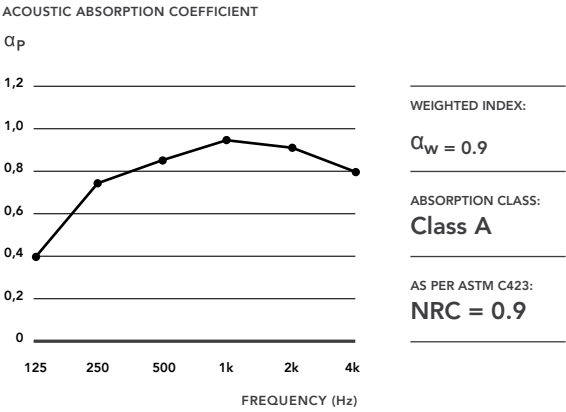
FINISH / REACTION TO FIRE (AS PER EN 13501-1)

Natural	D-s2,d0 / B-s1,d0 / B-s2,d0
Varnish	D-s2,d0 / B-s1,d0 / B-s2,d0
Wax Color	D-s2,d0 / B-s1,d0 / B-s2,d0
Wax Color + varnish	D-s2,d0 / B-s1,d0 / B-s2,d0

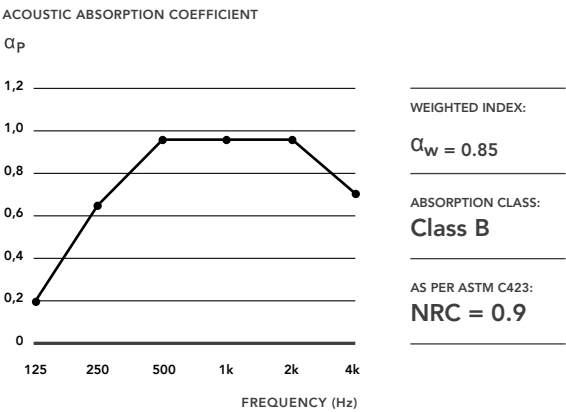
ACOUSTIC RESULTS

Acoustic absorption was measured as per the ISO 354 standard. The various data relating to acoustic absorption (α_p , α_w , absorption class) have been calculated according to ISO 11654 standard (LINEA + acoustic supplement).

LINEA 2.6.5 CEILING + LR 20mm on E250 mm plenum

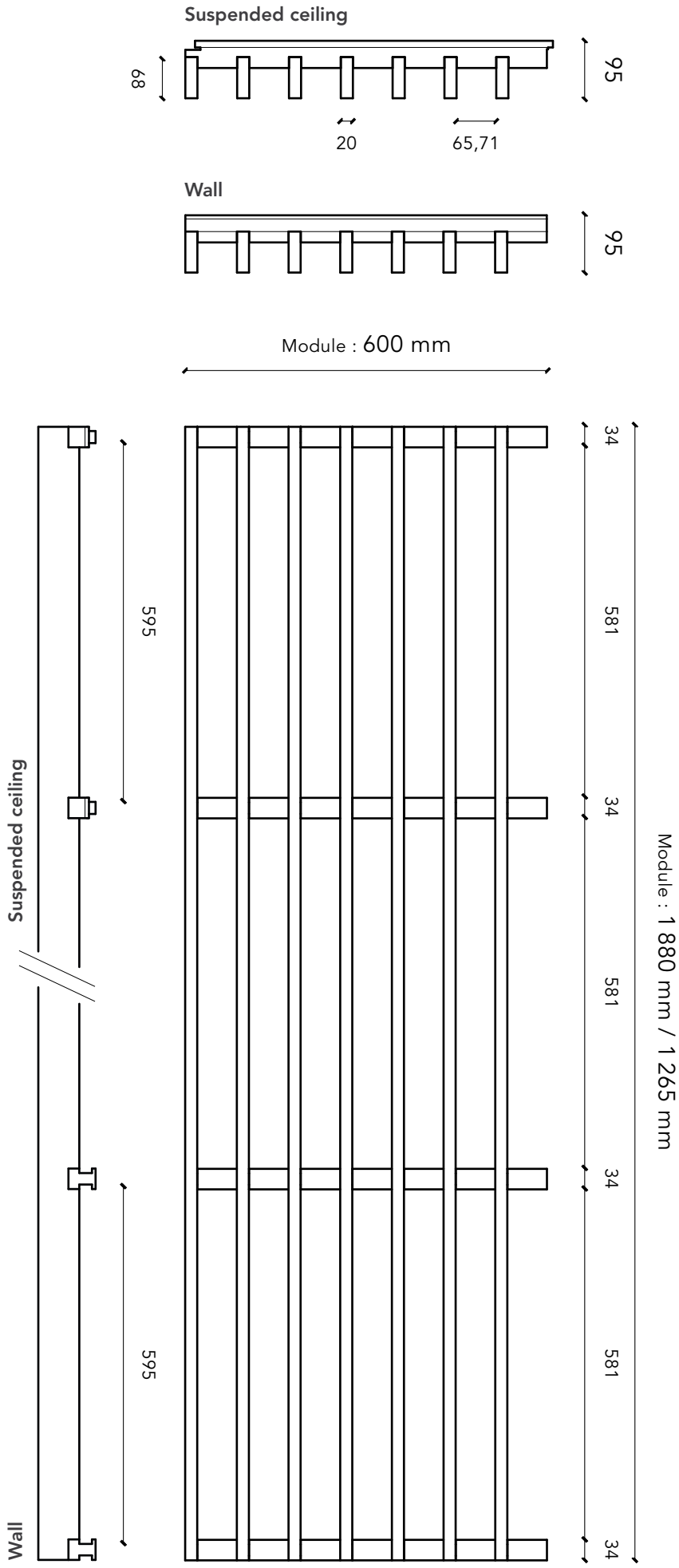


LINEA 2.6.5 WALL + LR 20mm on E50 mm plenum



LINEA 2.6.6

LINEA RANGE
INTERIOR



TECHNICAL CHARACTERISTICS

Panel dimensions	1880 x 600 mm and 1265 x 600 mm
Cross-section of slats	20 mm (face) x 68 mm (height)
Spacing between slats	65.71 mm
Centre distance of slats	85.71 mm
Black rear counter-slats	34 x 45 mm
Overall thickness	95 mm
Wood species	Pine, Oak, Douglas fir
Surface mass (pine)	13 kg/m²
Surface mass (oak)	16.7 kg/m²
Surface mass (douglas fir)	12.9 kg/m²
Openness percentage	77%

Rear surface: acoustic mineral wool tiles 120 kg/m³ surfaced with black fleece facing (format : 600 x 600 mm; 20 mm or 22 mm thickness)
Not supplied by Laudescher

FITTING SYSTEM

Suspended ceiling

- Fitting on T24 grid system:
- As per DTU 58-1
 - As per EN 13964

Wall cladding

- Mechanical fixing by screwing:
- As per DTU 36-2
 - As per EN 14915

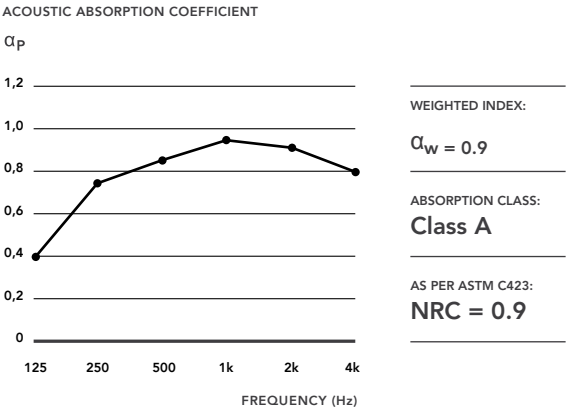
FINISH / REACTION TO FIRE (AS PER EN 13501-1)

Natural	D-s2,d0 / B-s1,d0 / B-s2,d0
Varnish	D-s2,d0 / B-s1,d0 / B-s2,d0
Wax Color	D-s2,d0 / B-s1,d0 / B-s2,d0
Wax Color + varnish	D-s2,d0 / B-s1,d0 / B-s2,d0

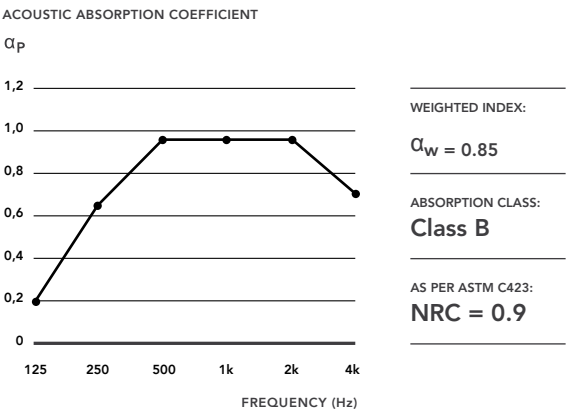
ACOUSTIC RESULTS

Acoustic absorption was measured as per the ISO 354 standard. The various data relating to acoustic absorption (α_p , α_w , absorption class) have been calculated according to ISO 11654 standard (LINEA + acoustic supplement).

LINEA 2.6.6 CEILING + LR 20mm on E250 mm plenum

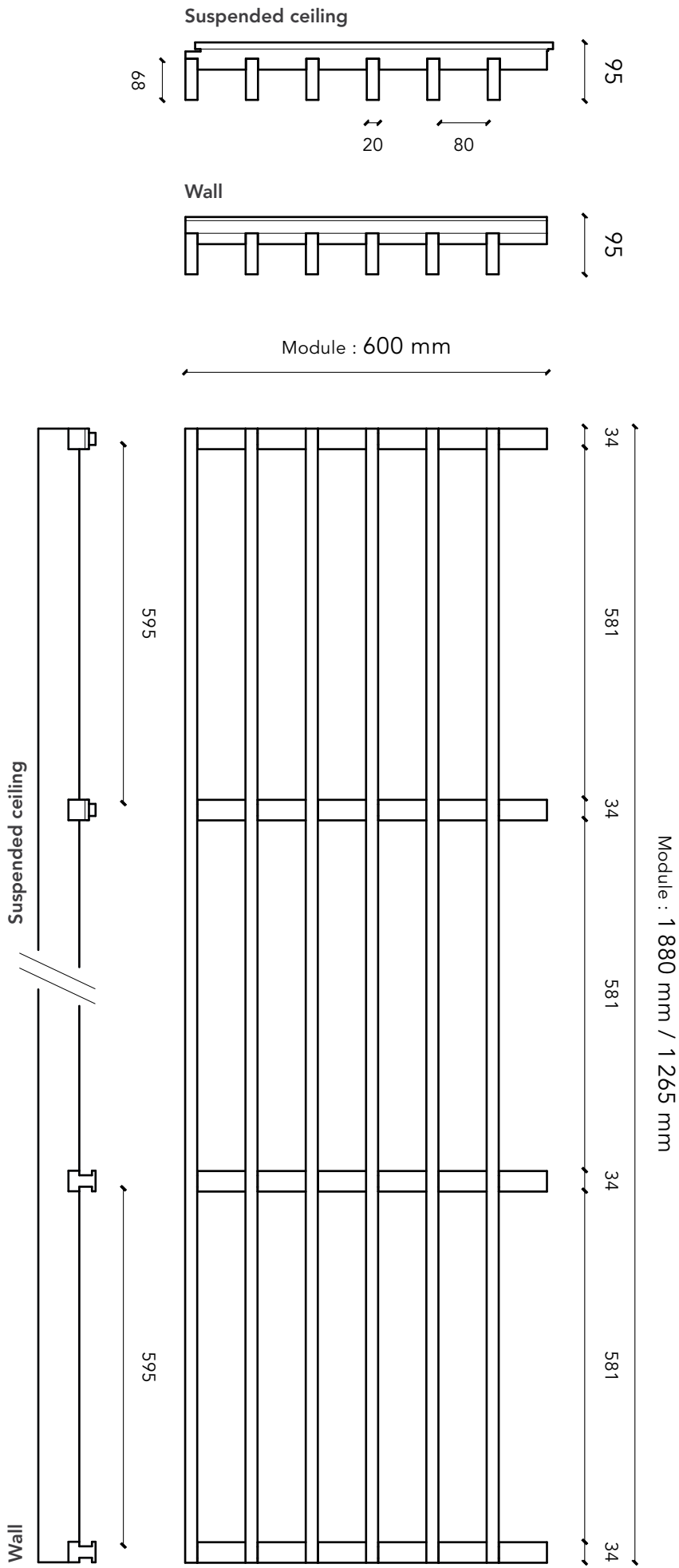


LINEA 2.6.6 WALL + LR 20mm on E50 mm plenum



LINEA 2.6.8

LINEA RANGE
INTERIOR



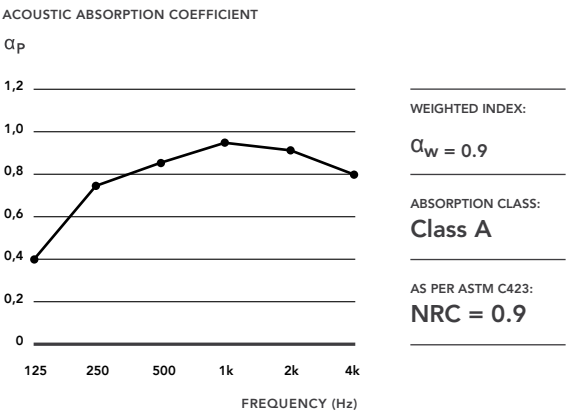
FINISH / REACTION TO FIRE (AS PER EN 13501-1)

Natural	D-s2,d0 / B-s1,d0 / B-s2,d0
Varnish	D-s2,d0 / B-s1,d0 / B-s2,d0
Wax Color	D-s2,d0 / B-s1,d0 / B-s2,d0
Wax Color + varnish	D-s2,d0 / B-s1,d0 / B-s2,d0

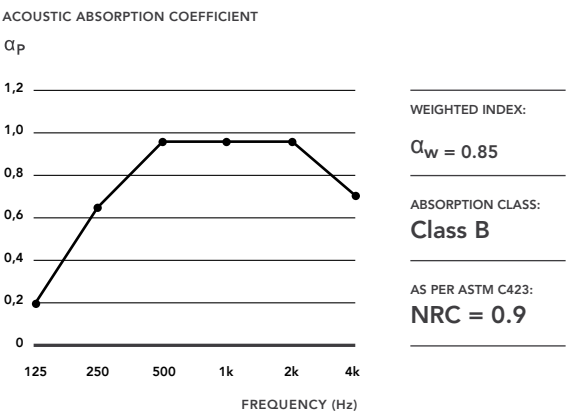
ACOUSTIC RESULTS

Acoustic absorption was measured as per the ISO 354 standard. The various data relating to acoustic absorption (α_p , α_w , absorption class) have been calculated according to ISO 11654 standard (LINEA + acoustic supplement).

LINEA 2.6.8 CEILING + LR 20mm on E250 mm plenum



LINEA 2.6.8 WALL + LR 20mm on E50 mm plenum



TECHNICAL CHARACTERISTICS

Panel dimensions	1880 x 600 mm and 1265 x 600 mm
Cross-section of slats	20 mm (face) x 68 mm (height)
Spacing between slats	80 mm
Centre distance of slats	100 mm
Black rear counter-slats	34 x 45 mm
Overall thickness	95 mm
Wood species	Pine, Oak, Douglas fir
Surface mass (pine)	11.7 kg/m ²
Surface mass (oak)	14.8 kg/m ²
Surface mass (douglas fir)	11.55 kg/m ²
Openness percentage	80%

Rear surface: acoustic mineral wool tiles 120 kg/m³ surfaced with black fleece facing (format : 600 x 600 mm; 20 mm or 22 mm thickness)
Not supplied by Laudescher

FITTING SYSTEM

Suspended ceiling

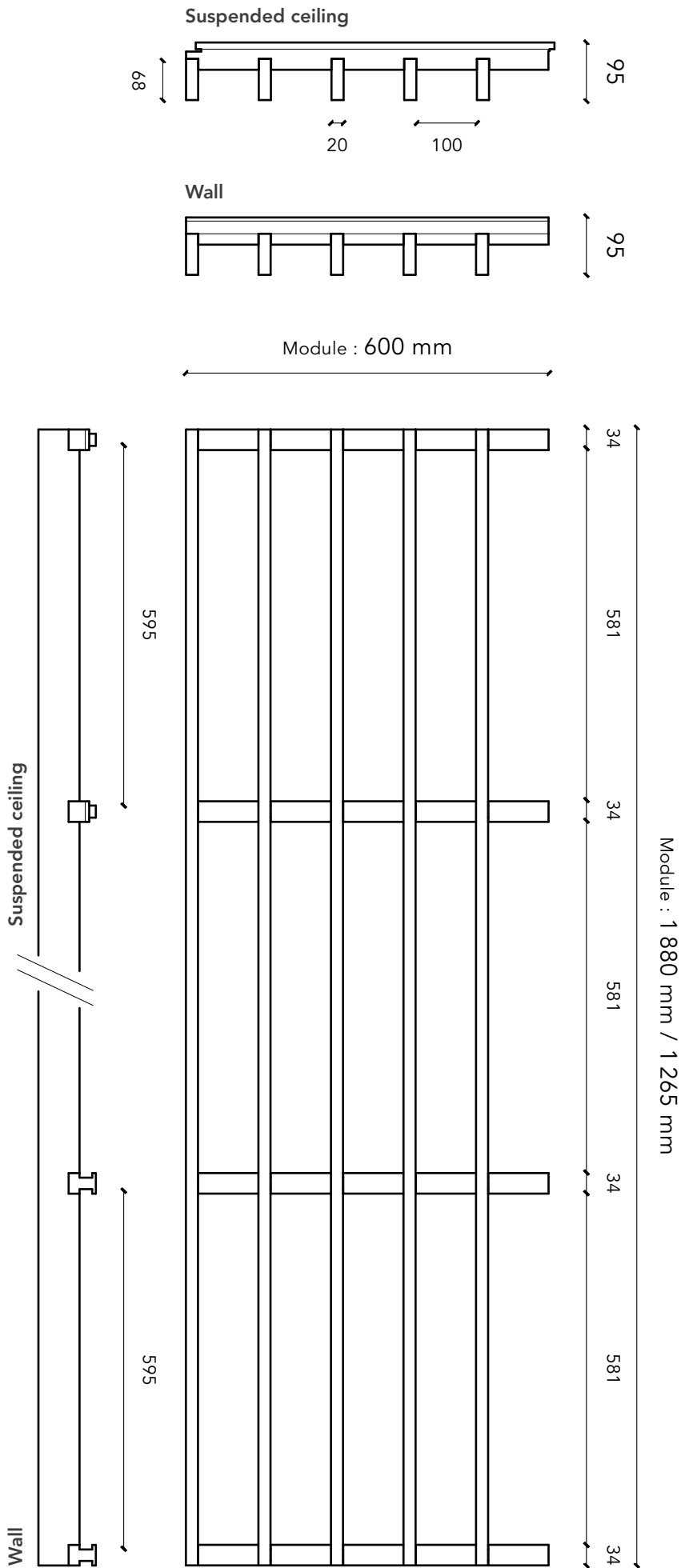
- Fitting on T24 grid system:
- As per DTU 58-1
- As per EN 13964

Wall cladding

- Mechanical fixing by screwing:
- As per DTU 36-2
- As per EN 14915

LINEA 2.6.10

LINEA RANGE
INTERIOR



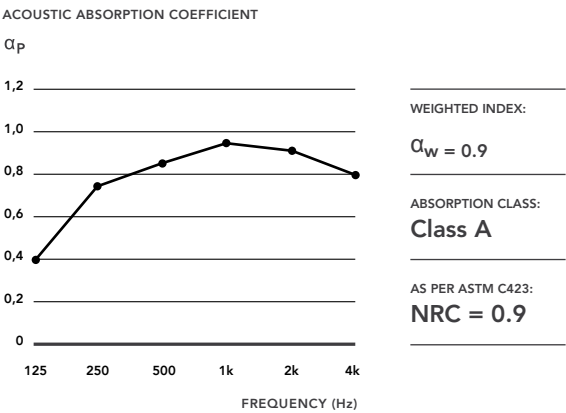
FINISH / REACTION TO FIRE (AS PER EN 13501-1)

Natural	D-s2,d0 / B-s1,d0 / B-s2,d0
Varnish	D-s2,d0 / B-s1,d0 / B-s2,d0
Wax Color	D-s2,d0 / B-s1,d0 / B-s2,d0
Wax Color + varnish	D-s2,d0 / B-s1,d0 / B-s2,d0

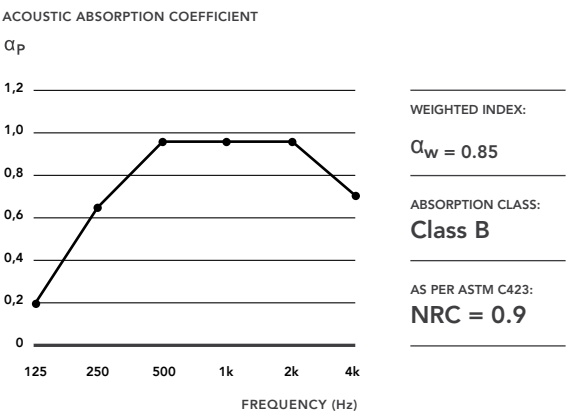
ACOUSTIC RESULTS

Acoustic absorption was measured as per the ISO 354 standard. The various data relating to acoustic absorption (α_p , α_w , absorption class) have been calculated according to ISO 11654 standard (LINEA + acoustic supplement).

LINEA 2.6.10 CEILING + LR 20mm on E250 mm plenum



LINEA 2.6.10 WALL + LR 20mm on E50 mm plenum



TECHNICAL CHARACTERISTICS

Panel dimensions	1880 x 600 mm and 1265 x 600 mm
Cross-section of slats	20 mm (face) x 68 mm (height)
Spacing between slats	100 mm
Centre distance of slats	120 mm
Black rear counter-slats	34 x 45 mm
Overall thickness	95 mm
Wood species	Pine, Oak, Douglas fir
Surface mass (pine)	11.7 kg/m ²
Surface mass (oak)	14.8 kg/m ²
Surface mass (douglas fir)	11.55 kg/m ²
Openness percentage	83%

Rear surface: acoustic mineral wool tiles 120 kg/m³ surfaced with black fleece facing (format : 600 x 600 mm; 20 mm or 22 mm thickness)
Not supplied by Laudescher

FITTING SYSTEM

Suspended ceiling

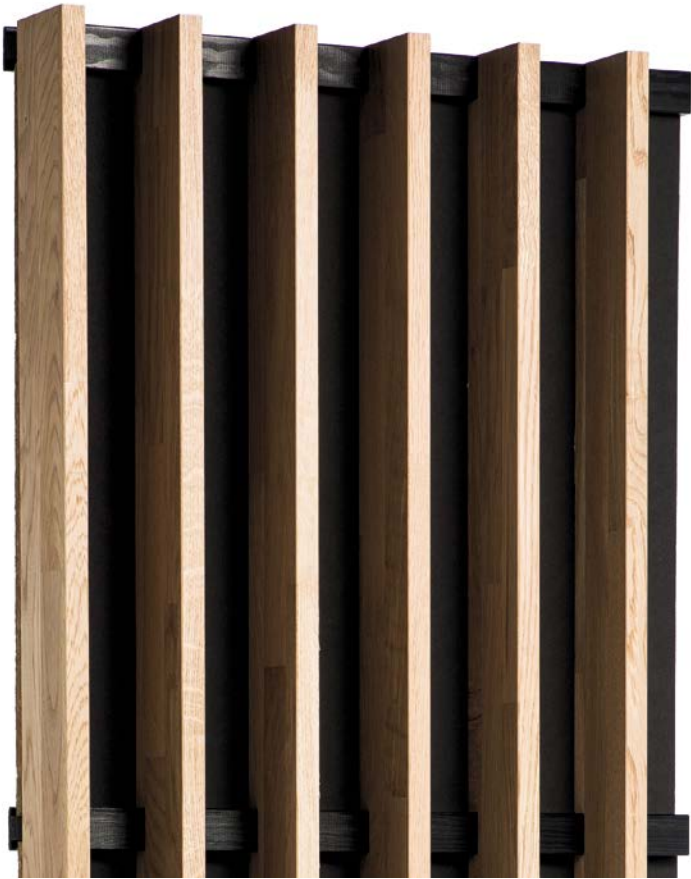
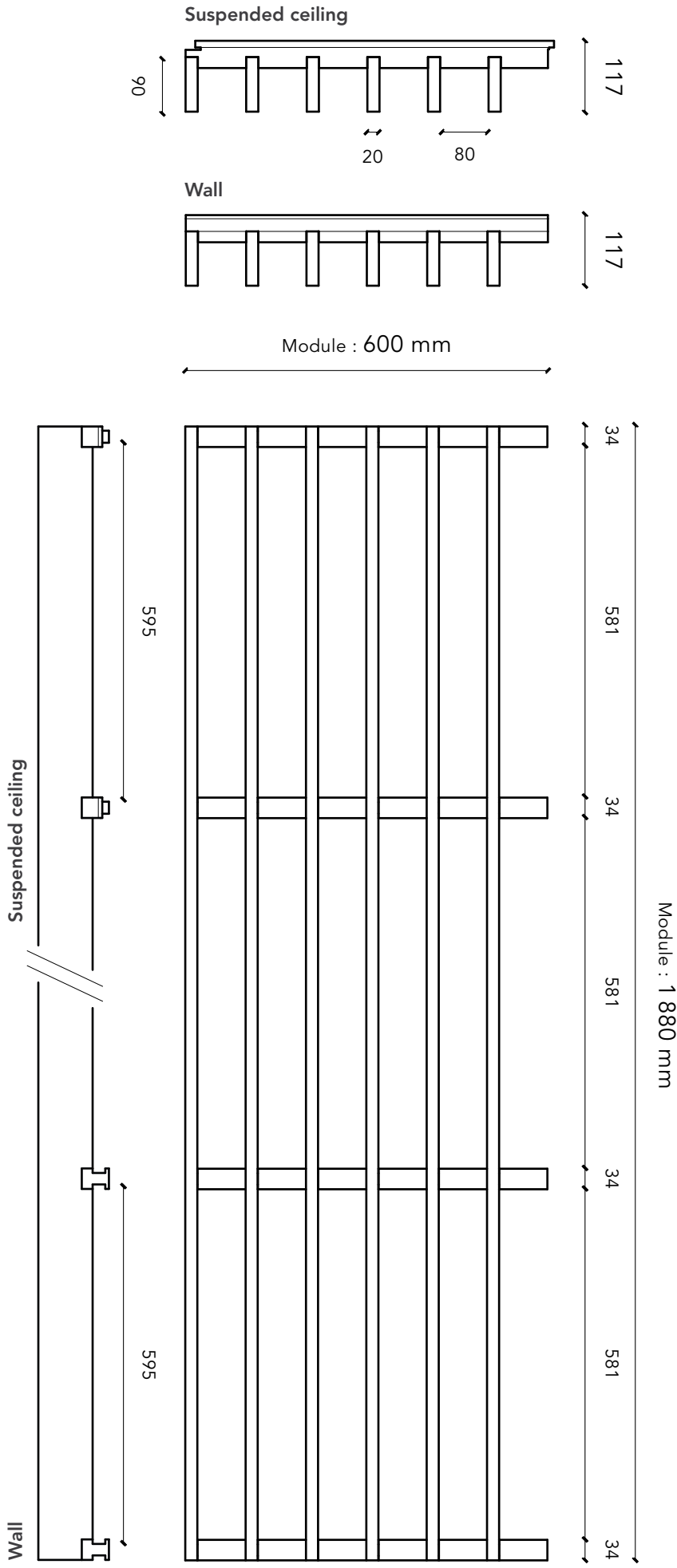
Fitting on T24 grid system:
– As per DTU 58-1
– As per EN 13964

Wall cladding

Mechanical fixing by screwing:
– As per DTU 36-2
– As per EN 14915

LINEA 2.9.8

LINEA RANGE
INTERIOR



TECHNICAL CHARACTERISTICS

Panel dimensions	1880 x 600 mm
Cross-section of slats	20 mm (face) x 90 mm (height)
Spacing between slats	80 mm
Centre distance of slats	100 mm
Black rear counter-slats	34 x 45 mm
Overall thickness	117 mm
Wood species	Latted pine, latted oak
Surface mass (pine)	15.3 kg/m²
Surface mass (oak)	19.4 kg/m²
Openness percentage	80%

Rear surface: acoustic mineral wool tiles 120 kg/m³ surfaced with black fleece facing (format : 600 x 600 mm; 20 mm or 22 mm thickness)
Not supplied by Laudescher

FITTING SYSTEM

Suspended ceiling

- Fitting on T24 grid system:
- As per DTU 58-1
 - As per EN 13964

Wall cladding

- Mechanical fixing by screwing:
- As per DTU 36-2
 - As per EN 14915

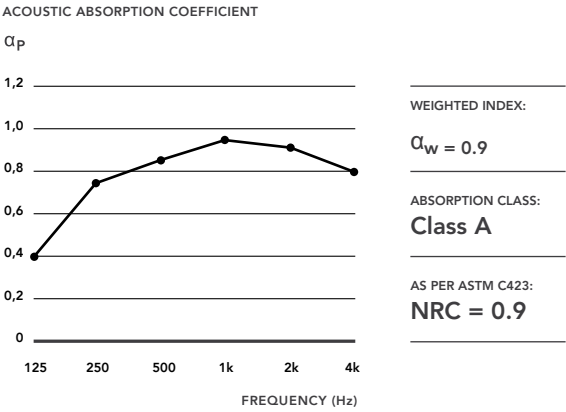
FINISH / REACTION TO FIRE (AS PER EN 13501-1)

Natural	D-s2,d0
Clear varnish	D-s2,d0 / B-s2,d0
Wax Color	D-s2,d0 / B-s2,d0
Wax Color + varnish	D-s2,d0 / B-s2,d0

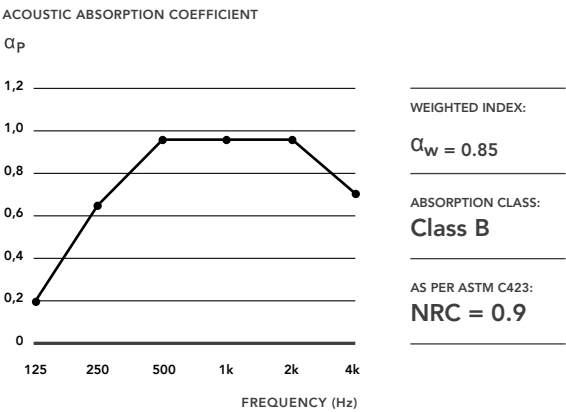
ACOUSTIC RESULTS

Acoustic absorption was measured as per the ISO 354 standard. The various data relating to acoustic absorption (α_p , α_w , absorption class) have been calculated according to ISO 11654 standard (LINEA + acoustic supplement).

LINEA 2.9.8 CEILING + LR 20mm on E250 mm plenum

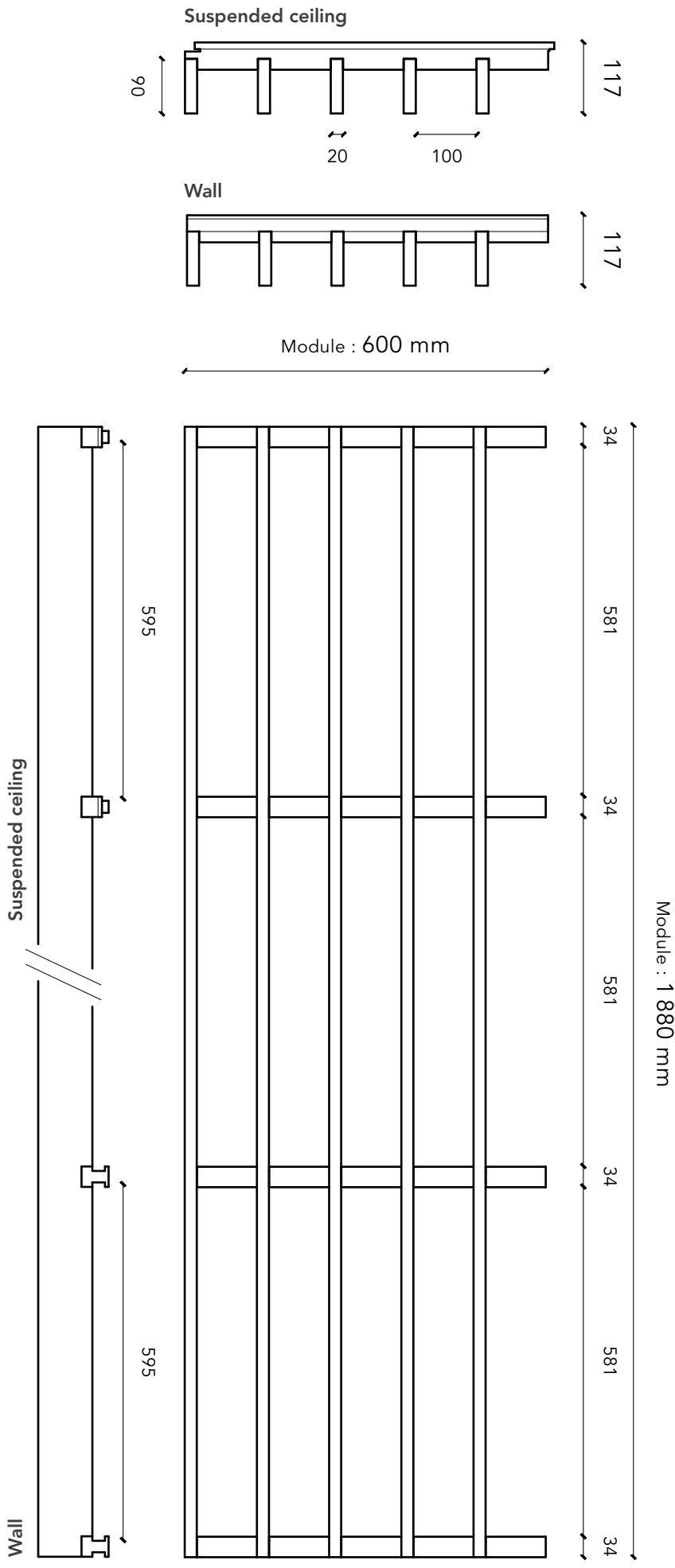


LINEA 2.9.8 WALL + LR 20mm on E50 mm plenum



LINEA 2.9.10

LINEA RANGE
INTERIOR



TECHNICAL CHARACTERISTICS

Panel dimensions	1880 x 600 mm
Cross-section of slats	20 mm (face) x 90 mm (height)
Spacing between slats	100 mm
Centre distance of slats	120 mm
Black rear counter-slats	34 x 45 mm
Overall thickness	117 mm
Wood species	Latted pine, latted oak
Surface mass (pine)	13.2 kg/m ²
Surface mass (oak)	16.6 kg/m ²
Openness percentage	83%

Rear surface: acoustic mineral wool tiles 120 kg/m³ surfaced with black fleece facing (format : 600 x 600 mm; 20 mm or 22 mm thickness)
Not supplied by Laudescher

FITTING SYSTEM

Suspended ceiling

- Fitting on T24 grid system:
- As per DTU 58-1
- As per EN 13964

Wall cladding

- Mechanical fixing by screwing:
- As per DTU 36-2
- As per EN 14915

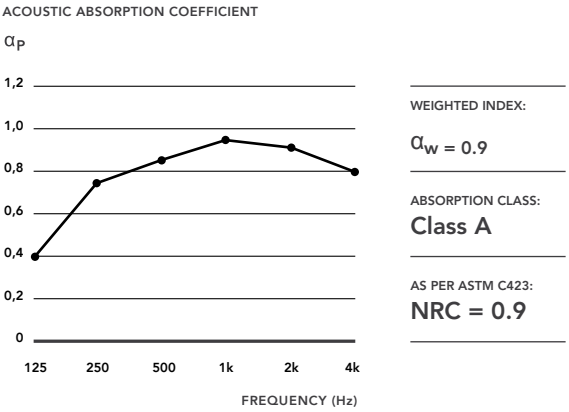
FINISH / REACTION TO FIRE (AS PER EN 13501-1)

Natural	D-s2,d0
Clear varnish	D-s2,d0 / B-s2,d0
Wax Color	D-s2,d0 / B-s2,d0
Wax Color + varnish	D-s2,d0 / B-s2,d0

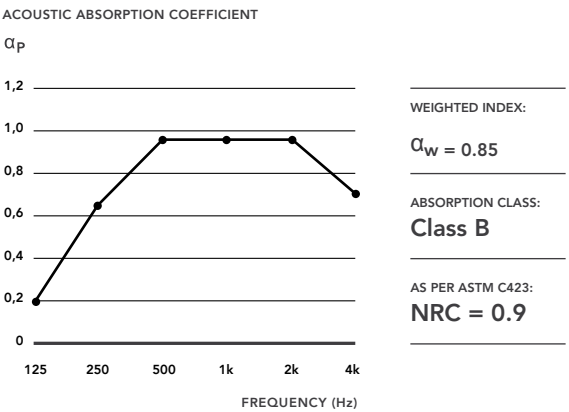
ACOUSTIC RESULTS

Acoustic absorption was measured as per the ISO 354 standard. The various data relating to acoustic absorption (α_p , α_w , absorption class) have been calculated according to ISO 11654 standard (LINEA + acoustic supplement).

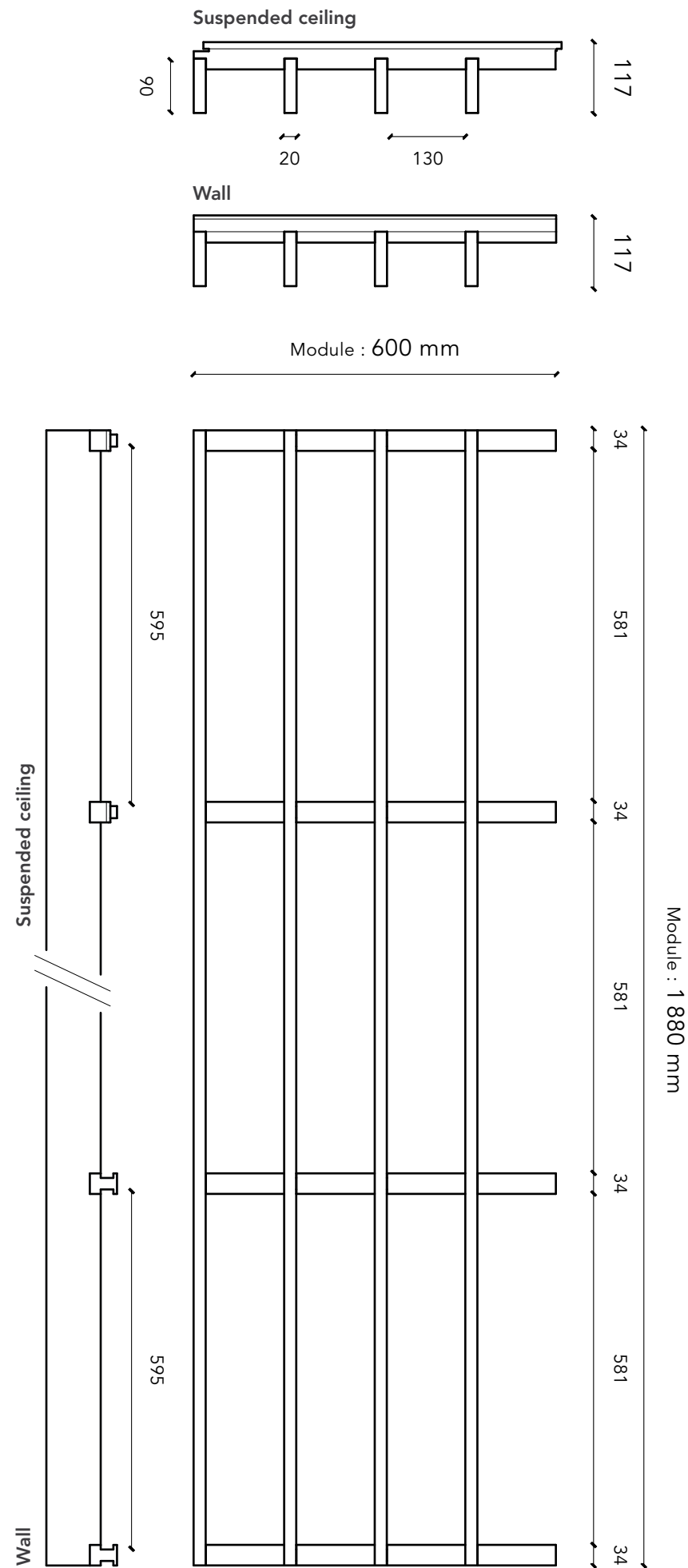
LINEA 2.9.10 CEILING + LR 20mm on E250 mm plenum



LINEA 2.9.10 WALL + LR 20mm on E50 mm plenum



LINEA RANGE
INTERIOR



TECHNICAL CHARACTERISTICS

Panel dimensions	1880 x 600 mm
Cross-section of slats	20 mm (face) x 90 mm (height)
Spacing between slats	130 mm
Centre distance of slats	150 mm
Black rear counter-slats	34 x 45 mm
Overall thickness	117 mm
Wood species	Latted pine, latted oak
Surface mass (pine)	11 kg/m ²
Surface mass (oak)	13.8 kg/m ²
Openness percentage	87%

Rear surface: acoustic mineral wool tiles 120 kg/m³ surfaced with black fleece facing (format : 600 x 600 mm; 20 mm or 22 mm thickness)
Not supplied by Laudescher

FITTING SYSTEM

Suspended ceiling

Fitting on T24 grid system:

- As per DTU 58-1
- As per EN 13964

Wall cladding

Mechanical fixing by screwing:

- As per DTU 36-2
- As per EN 14915

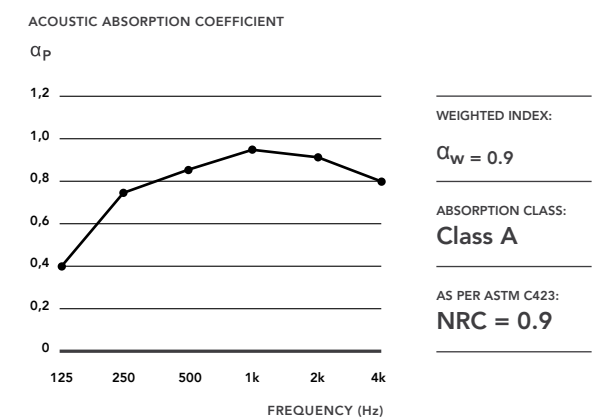
FINISH / REACTION TO FIRE (AS PER EN 13501-1)

Natural	D-s2,d0
Clear varnish	D-s2,d0 / B-s2,d0
Wax Color	D-s2,d0 / B-s2,d0
Wax Color + varnish	D-s2,d0 / B-s2,d0

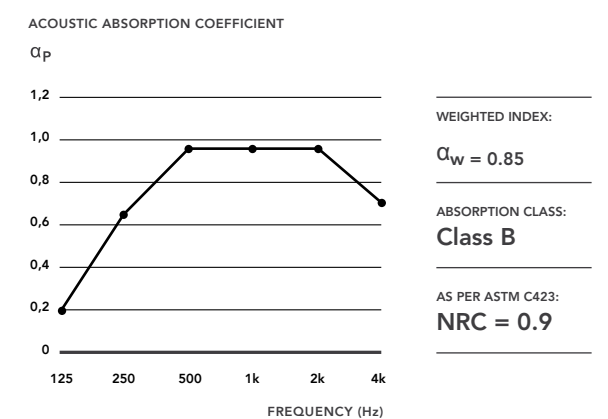
ACOUSTIC RESULTS

Acoustic absorption was measured as per the ISO 354 standard. The various data relating to acoustic absorption (α_p , α_w , absorption class) have been calculated according to ISO 11654 standard (LINEA + acoustic supplement).

LINEA 2.9.13 CEILING + LR 20mm on E250 mm plenum



LINEA 2.9.13 WALL + LR 20mm on E50 mm plenum



LINEA SHAPE

LINEA RANGE
INTERIOR

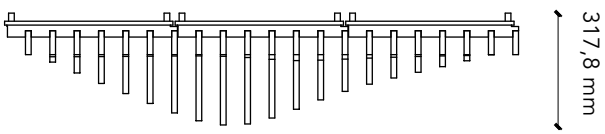
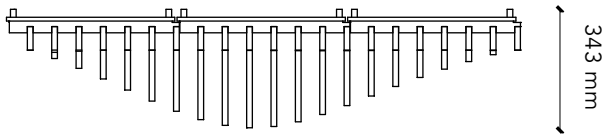
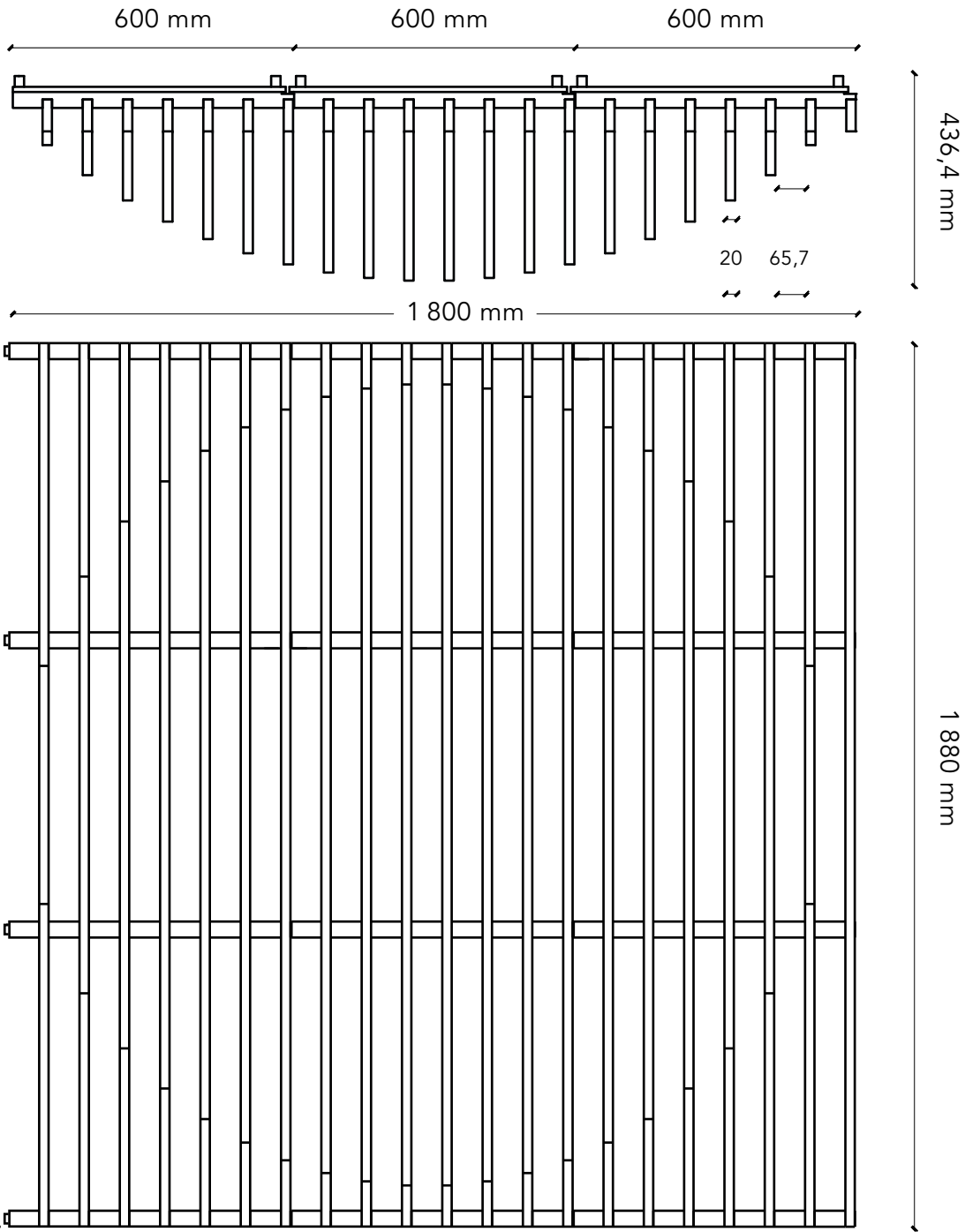
Module 1



Module 2



Module 3



This model is combined with the **LINEA 2.6.6** ceiling model to ensure continuity.

TECHNICAL CHARACTERISTICS

Module dimensions	1880 x 1800 mm i.e. 3 panels 1880 x 600 mm
Cross-section of slats	20 mm (face) x 68 mm (height)
Spacing between slats	65.71 mm
Centre distance of slats	85.71 mm
Black rear counter-slats	34 x 45 mm
Overall thickness	depending on module
Wood species	Latted pine, latted oak
Surface mass (pine)	15.5 kg/m ²
Surface mass (oak)	19.7 kg/m ²
Openness percentage	77%

Rear surface: acoustic mineral wool tiles 120 kg/m³ surfaced with black fleece facing (format : 600 x 600 mm; 20 mm or 22 mm thickness)
Not supplied by Laudescher

FITTING SYSTEM

Suspended ceiling

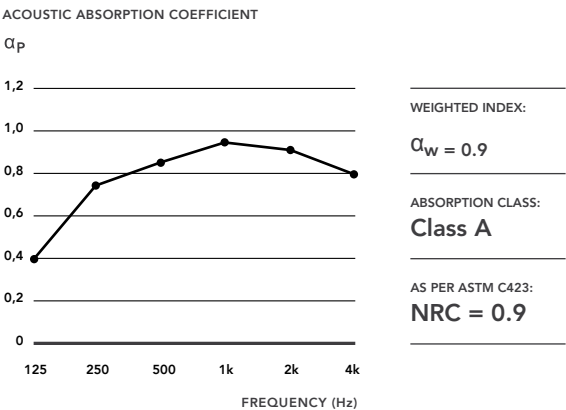
Fitting on T24 grid system:
– As per DTU 58-1
– As per EN 13964

FINISH / REACTION TO FIRE (AS PER EN 13501-1)

Natural	D-s2,d0
Clear varnish	D-s2,d0 / B-s2,d0
Wax Color	D-s2,d0 / B-s2,d0
Wax Color + varnish	D-s2,d0 / B-s2,d0

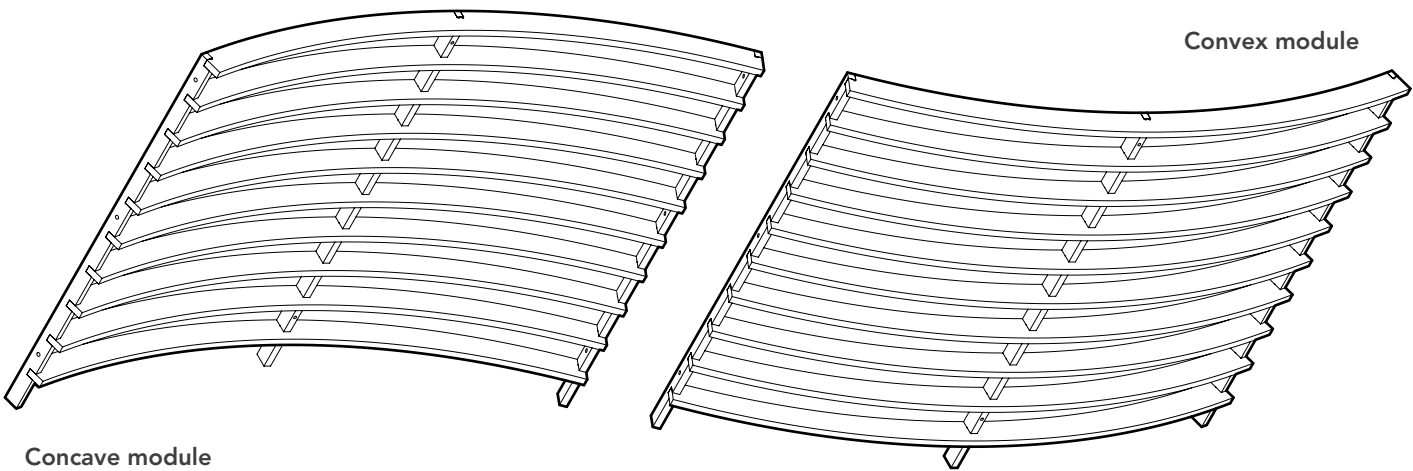
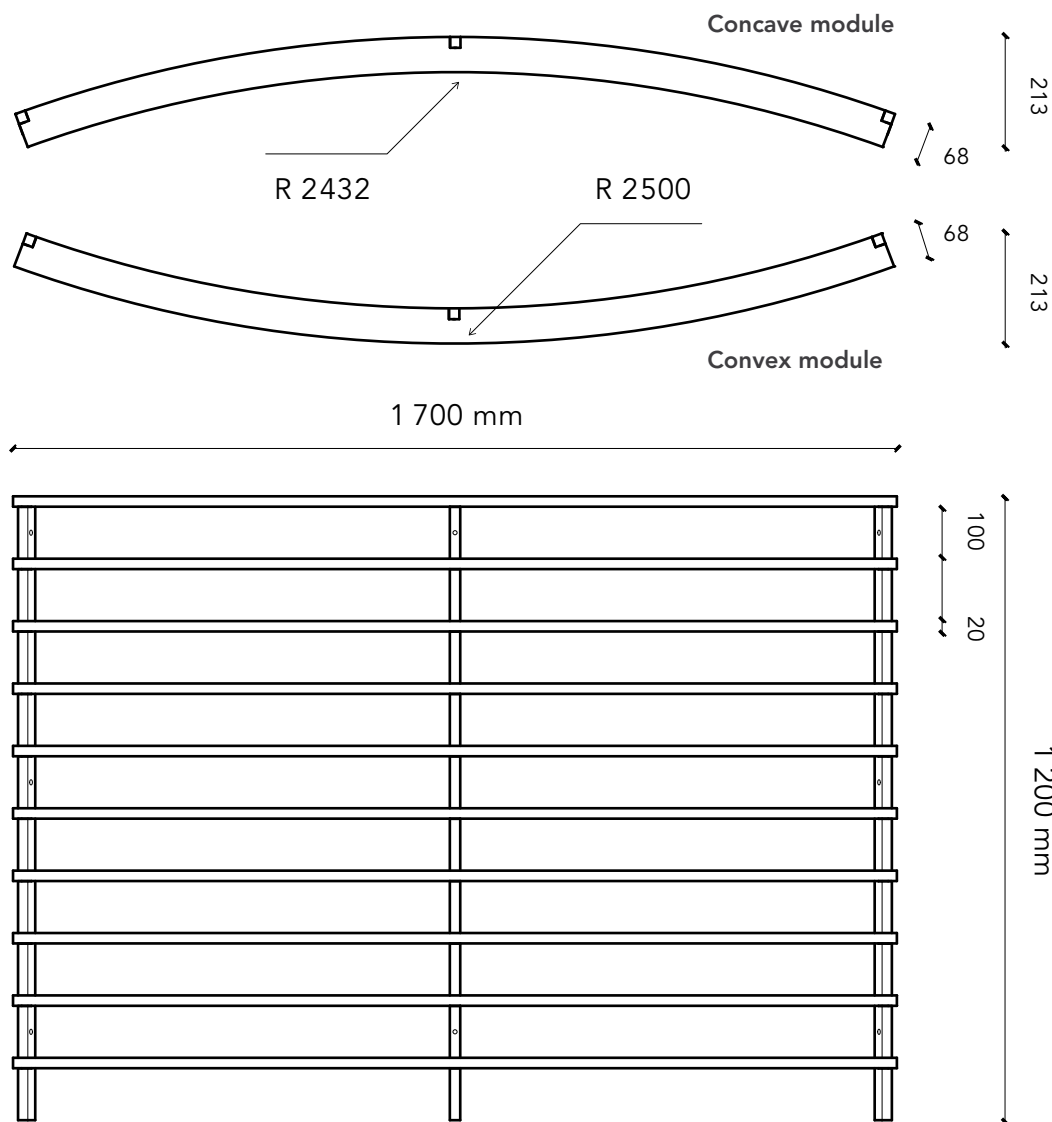
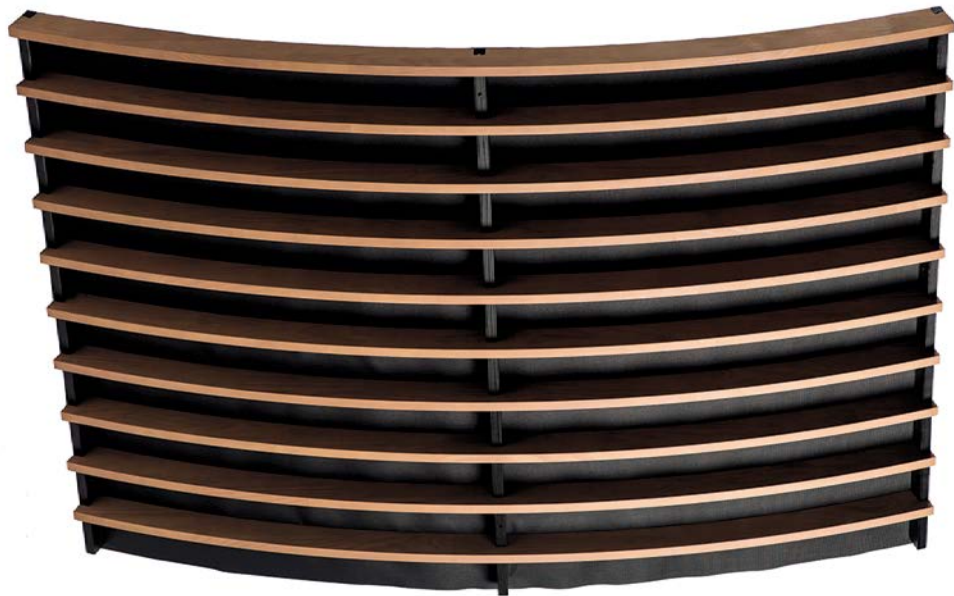
ACOUSTIC RESULTS

LINEA SHAPE CEILING + LR 20mm on E250 mm plenum



LINEA SWELL

LINEA RANGE
INTERIOR



TECHNICAL CHARACTERISTICS

Panel dimensions	1,720 x 1,200 mm
Cross-section of slats	20 mm (face) x 68 mm (height)
Spacing between slats	100 mm
Centre distance of slats	120 mm
Black rear counter-slats	20 x 42 mm
Overall thickness	213 mm
Wood species	Latted pine, latted oak
Surface mass (pine)	9.8 kg/m ²
Surface mass (oak)	12.4 kg/m ²
Openness percentage	83%

Rear surface: fabric LAU 301; acoustic version with fabric LAU 301 and rock wool 26,5 to 36 kg/m³ (45 mm thick)
Rock wool not supplied by Laudescher

FITTING SYSTEM

Suspended ceiling

Fitting on threaded rods:
– As per DTU 58-1
– As per EN 13964

FINISH / REACTION TO FIRE (AS PER EN 13501-1)

Natural	D-s2,d0
Clear varnish	D-s2,d0 / B-s2,d0
Wax Color	D-s2,d0 / B-s2,d0
Wax Color + varnish	D-s2,d0 / B-s2,d0

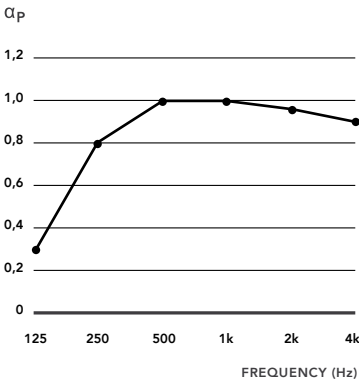
ACOUSTIC RESULTS

Acoustic absorption was measured as per the ISO 354 standard. The various data relating to acoustic absorption (α_p , α_w , absorption class) have been calculated according to ISO 11654 standard (LINEA + acoustic supplement).

LINEA SWELL CEILING

+ LAU 301 + LR 45 mm on E400 mm plenum

ACOUSTIC ABSORPTION COEFFICIENT



WEIGHTED INDEX:

$\alpha_w = 1$

ABSORPTION CLASS:

Class A

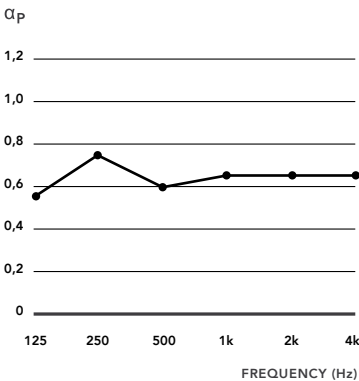
AS PER ASTM C423:

NRC = 0.95

LINEA SWELL CEILING

+ LAU 301 on E400 mm plenum

ACOUSTIC ABSORPTION COEFFICIENT



WEIGHTED INDEX:

$\alpha_w = 0.65$

ABSORPTION CLASS:

Class C

AS PER ASTM C423:

NRC = 0.65

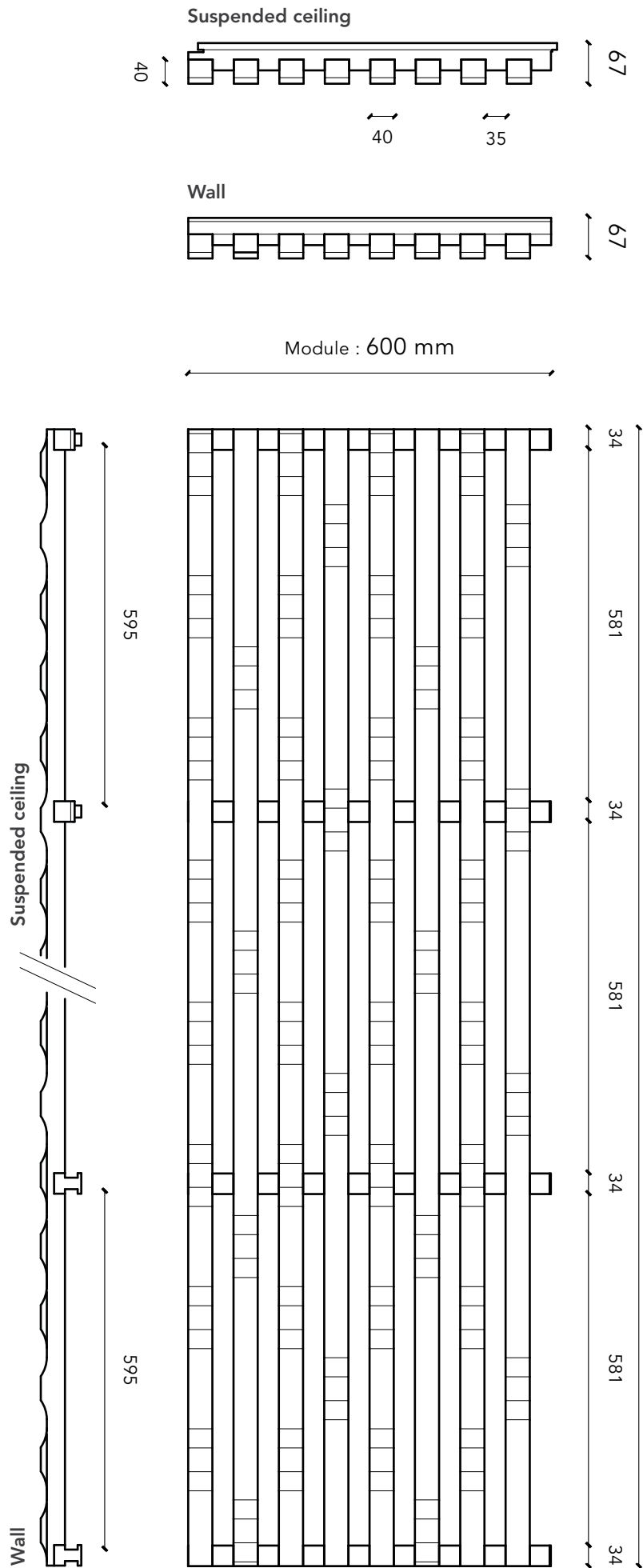
4

LINEA 3D products

INTERIOR
SUSPENDED CEILING & WALL CLADDING

LINEA 3D PIX

LINEA RANGE
INTERIOR



TECHNICAL CHARACTERISTICS

Panel dimensions	2495 x 600 mm and 1880 x 600 mm
Cross-section of slats	40 mm (face) x 40 mm (height)
Spacing between slats	35 mm
Centre distance of slats	75 mm
Black rear counter-slats	34 x 45 mm
Overall thickness	67 mm
Wood species	Pine, Oak
Surface mass (pine)	13.8 kg/m ²
Surface mass (oak)	17.5 kg/m ²
Openness percentage	47%

Rear surface: acoustic mineral wool tiles 120 kg/m³ surfaced with black fleece facing (format : 600 x 600 mm; 20 mm or 22 mm thickness)
Not supplied by Laudescher

FITTING SYSTEM

Suspended ceiling

- Fitting on T24 grid system:
- As per DTU 58-1
- As per EN 13964

Wall cladding

- Mechanical fixing by screwing:
- As per DTU 36-2
- As per EN 14915

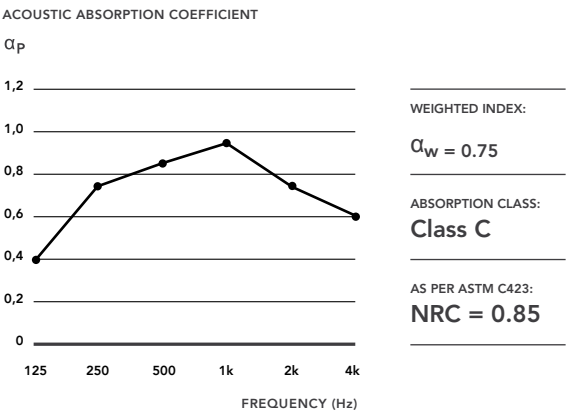
FINISH / REACTION TO FIRE (AS PER EN 13501-1)

Natural	D-s2,d0 / B-s1,d0 / B-s2,d0
Clear varnish	D-s2,d0 / B-s1,d0 / B-s2,d0
Wax Color	D-s2,d0 / B-s1,d0 / B-s2,d0
Wax Color + varnish	D-s2,d0 / B-s1,d0 / B-s2,d0

ACOUSTIC RESULTS

Acoustic absorption was measured as per the ISO 354 standard. The various data relating to acoustic absorption (α_p , α_w , absorption class) have been calculated in compliance with the ISO 11654 standard (LINEA + acoustic supplement).

LINEA 3D PIX CEILING + LR 20mm on E250 mm plenum



LINEA 3D PIX WALL + LR 20mm on E50 mm plenum

