



**INCREASE BIODIVERSITY**

The oak tree will help to promote biodiversity in the area, as native species they are typically home to almost 2300 species of wildlife. The other trees are chosen for their drought tolerance to future-proof the landscape for climate change.

**SUPPLEMENTARY TREES**

To help create The Hidden House, this additional screen of new evergreen and fruit trees will grow to further hide the house from view. Planted 5m apart and 2m from the brick wall to BS 5837:2012, the cotoneaster will screen the house in foliage all year around.

**T2 DAMAGE TO WALL**

As T2 grows it will start to damage the brick wall just as T3 and T4 was, it currently works to screen the development, but once the new screen has grown up it may have to be removed in years to come.

**DOUBLE-PLANTED NATIVE HEDGE**

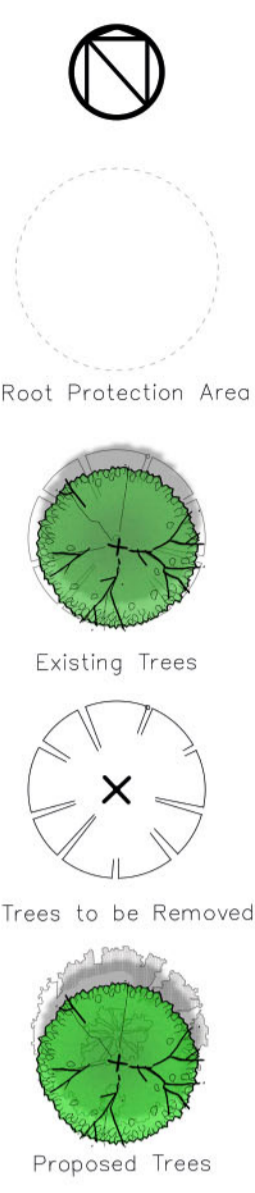
Including Beech, Hornbeam, Hazel, Hawthorn

**GRAVEL DRIVE**

No dig driveway to limit effect on T2 tree

**CIRCULAR ECONOMY GARDEN**

VEGETABLE PATCH



- T30 - OAK TREE  
*Quercus Robur*
- T31 - WALNUT TREE  
*Juglans regia*
- T32 - CHERRY TREE  
*Prunus serrulata 'Pink Perfection'*
- T33 - HORNBEAM  
*Carpinus betulus*
- T34 - HAWTHORNE  
*Crataegus monogyna*
- T35 - HIMALAYAN BIRCH  
*Betula utilis jacquemontii* multi stem
- T36 - APPLE TREE  
*Malus x domestica*
- T37 - COTONEASTER  
*Cotoneaster Cornubia*
- T38 - SILVER BIRCH  
*Betula Pendula*
- T39 - PEAR TREE  
*Pyrus communis*
- T40 - HAZEL TREE  
*Corylus avellana*
- T41 - WILD CHERRY  
*Prunus avium*
- T42 - WILD CHERRY  
*Prunus avium*

Revisions  
A  
UPDATED TREE SPECIES

Project  
Hidden House

Client  
Mr W. Campion

Drawing  
10-Proposed Landscape Plan  
1:100 @ A1

Date  
14.09.2020



106 10