

Planting Schedule

Native Hedgerow table with columns: Number, Abbrev., Species, Height, Specification, Density

Dogwood and Rose Shrub Mix A table with columns: Number, Abbrev., Species, Height, Pot Size, Specification, Density

Native Shrub Mix 1 - Hazel/Wet table with columns: Number, Abbrev., Species, Height, Pot Size, Specification, Density

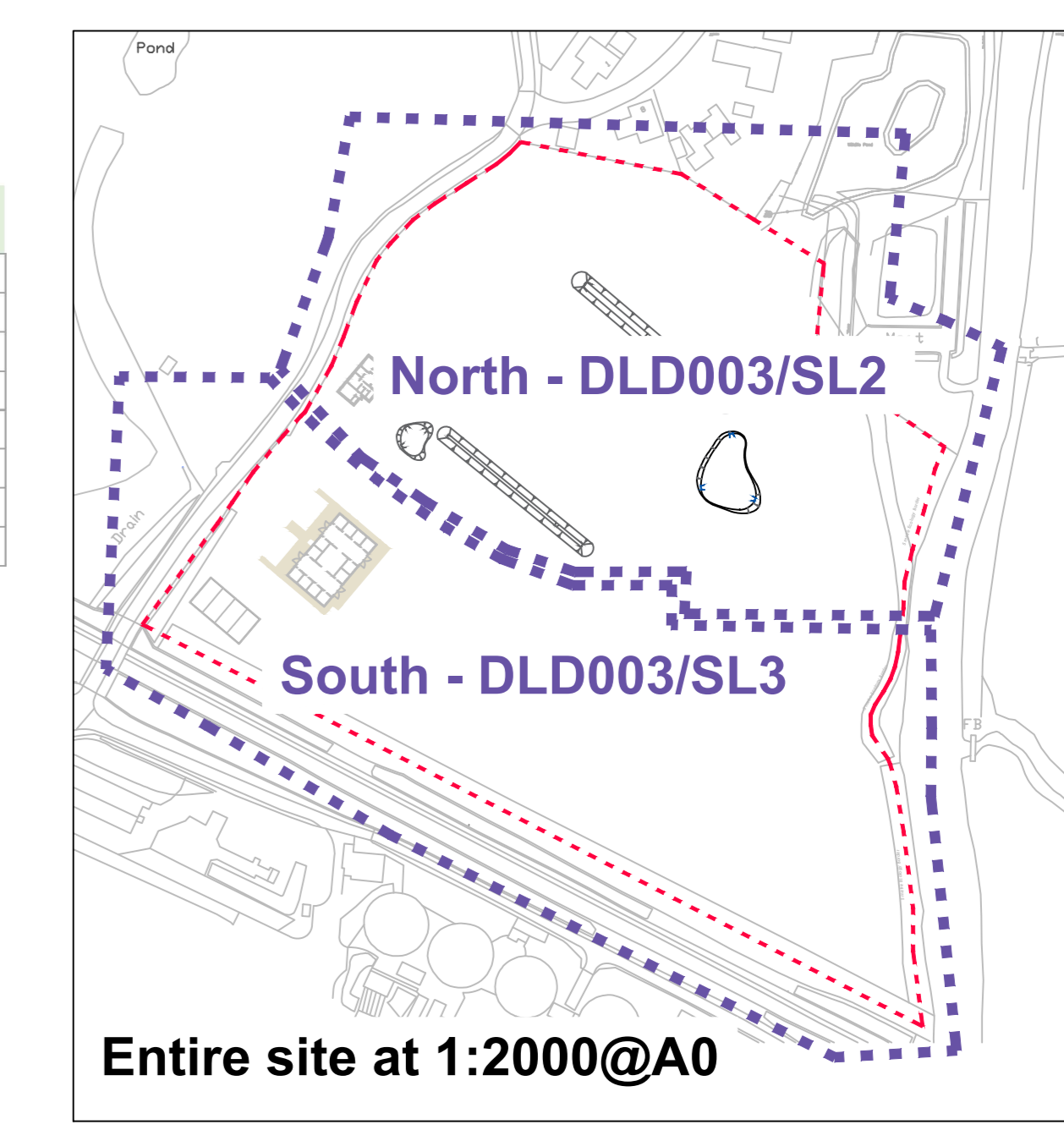
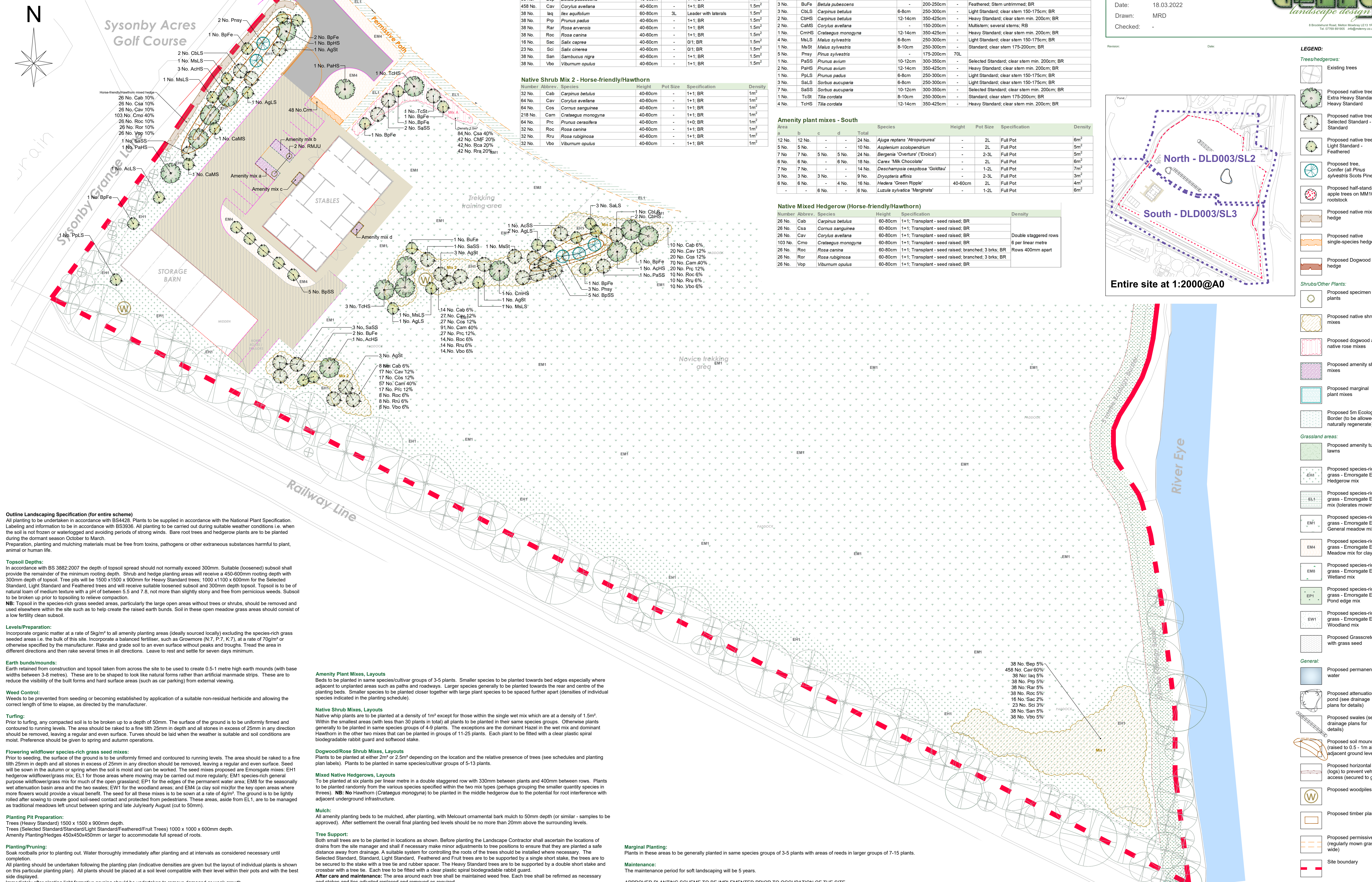
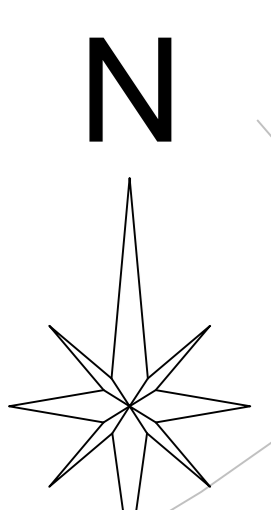
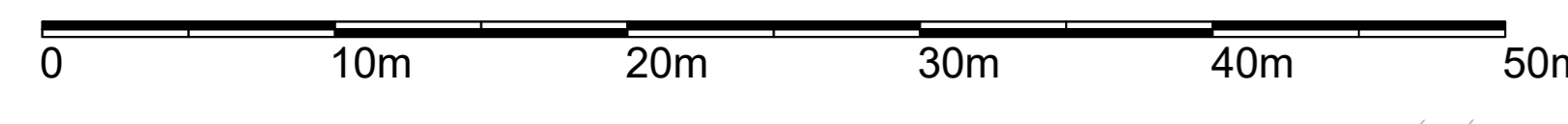
Native Shrub Mix 2 - Horse-friendly/Hawthorn table with columns: Number, Abbrev., Species, Height, Pot Size, Specification, Density

Trees - General table with columns: Number, Abbrev., Species, Girth, Height, Pot Size, Specification

Amenity plant mixes - South table with columns: Area, Species, Height, Pot Size, Specification, Density

Native Mixed Hedgerow (Horse-friendly/Hawthorn) table with columns: Number, Abbrev., Species, Height, Specification, Density

Project: Melton Leisure Development off Sysonby
Grange Lane, Melton Mowbray
Status: PLANNING
Job Number: DLD003/SL3
Client: Edren Homes Ltd
Sheet Title: Soft Landscape Detailed Design - South
Scale: 1:250@A0
Date: 18.03.2022
Drawn: MRD
Checked:



- LEGEND:
Trees/hedgerows: Existing trees, Proposed native tree, etc.
Shrubs/Other Plants: Proposed specimen plants, Proposed native shrub mixes, etc.
Grassland areas: Proposed amenity turf lawns, Proposed species-rich grass, etc.
General: Proposed permanent water, Proposed attenuation pond, etc.

Outline Landscaping Specification (for entire scheme)
All planting to be undertaken in accordance with BS4428. Plants to be supplied in accordance with the National Plant Specification.
Soil: In accordance with BS 3882:2007 the depth of topsoil spread should not normally exceed 300mm. Suitable (loosened) subsoil shall provide the remainder of the minimum rooting depth.

Amenity Plant Mixes, Layouts
Beds to be planted in same species/cultivar groups of 3-5 plants. Smaller species to be planted towards bed edges especially where adjacent to unplanted areas such as paths and roadways.
Native Shrub Mixes, Layouts
Native whip plants are to be planted at a density of 1m² except for those within the single wet mix which are at a density of 1.5m².
Dogwood/Rose Shrub Mixes, Layouts
Plants to be planted at either 2m² or 2.5m² depending on the location and the relative presence of trees (see schedules and planting plan labels).

Marginal Planting:
Plants in these areas to be generally planted in same species groups of 3-5 plants with areas of reeds in larger groups of 7-15 plants.
Maintenance:
The maintenance period for soft landscaping will be 5 years.
APPROVED PLANTING SCHEME TO BE IMPLEMENTED PRIOR TO OCCUPATION OF THE SITE