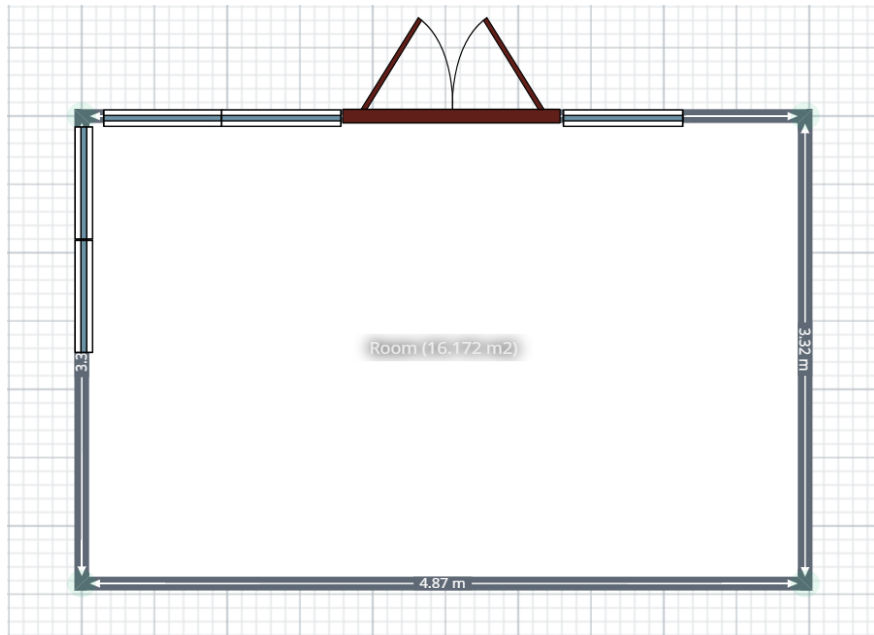
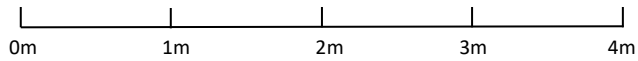


Internal Floor Plan of proposed home office



Scale 1:50



Notes regarding floor plan:

This floor plan shows the external measurements of the building, excluding the flyover, in order to show where the windows and doors are located. The measurements match the external building measurements on the scale drawings.

Notes regarding position:

- French doors are located at the front of the home office. The front of the home office is proposed to face towards the back of the garden, away from the road and away from the house.
- Side with 2 windows faces towards our garden.