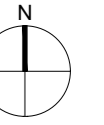


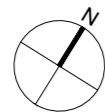
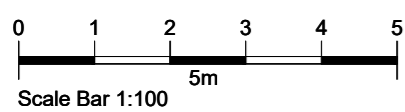
Notes

1. Copyright Jessop and Cook Architects Limited.
2. Do not scale from drawings, all dimensions to be checked on site.



PROPOSED GROUND FLOOR PLAN

Scale 1:100



Revisions

PLANNING ISSUE

New awnings and new courtyard door to
The Crown Inn, 31 High Street, Woodstock
OX20 1TE

for
Justine Rosser

Drawing title

Proposed Ground Floor Plan

JESSOP & COOK
ARCHITECTS

WEST WING, SECOND FLOOR
9 PARK END STREET
OXFORD OX1 1HH

T: 01865 591212
E: info@jessopandcook.co.uk
www.jessopandcook.co.uk

Scale at A2	Date	Drawn by	Checked
1:100	Mar 2022	AB	
Drawing number	Revision		
P.1599_084	*		