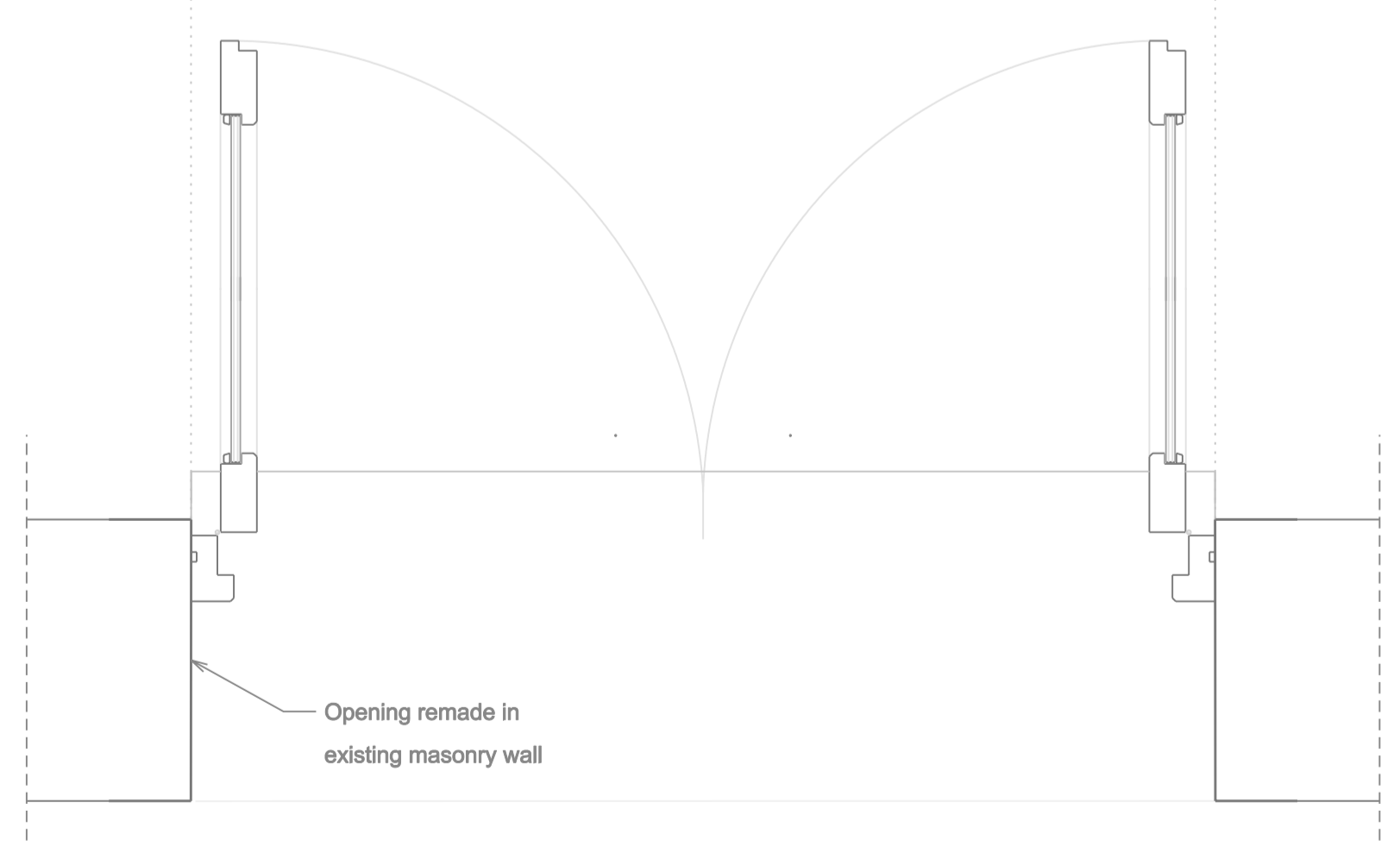
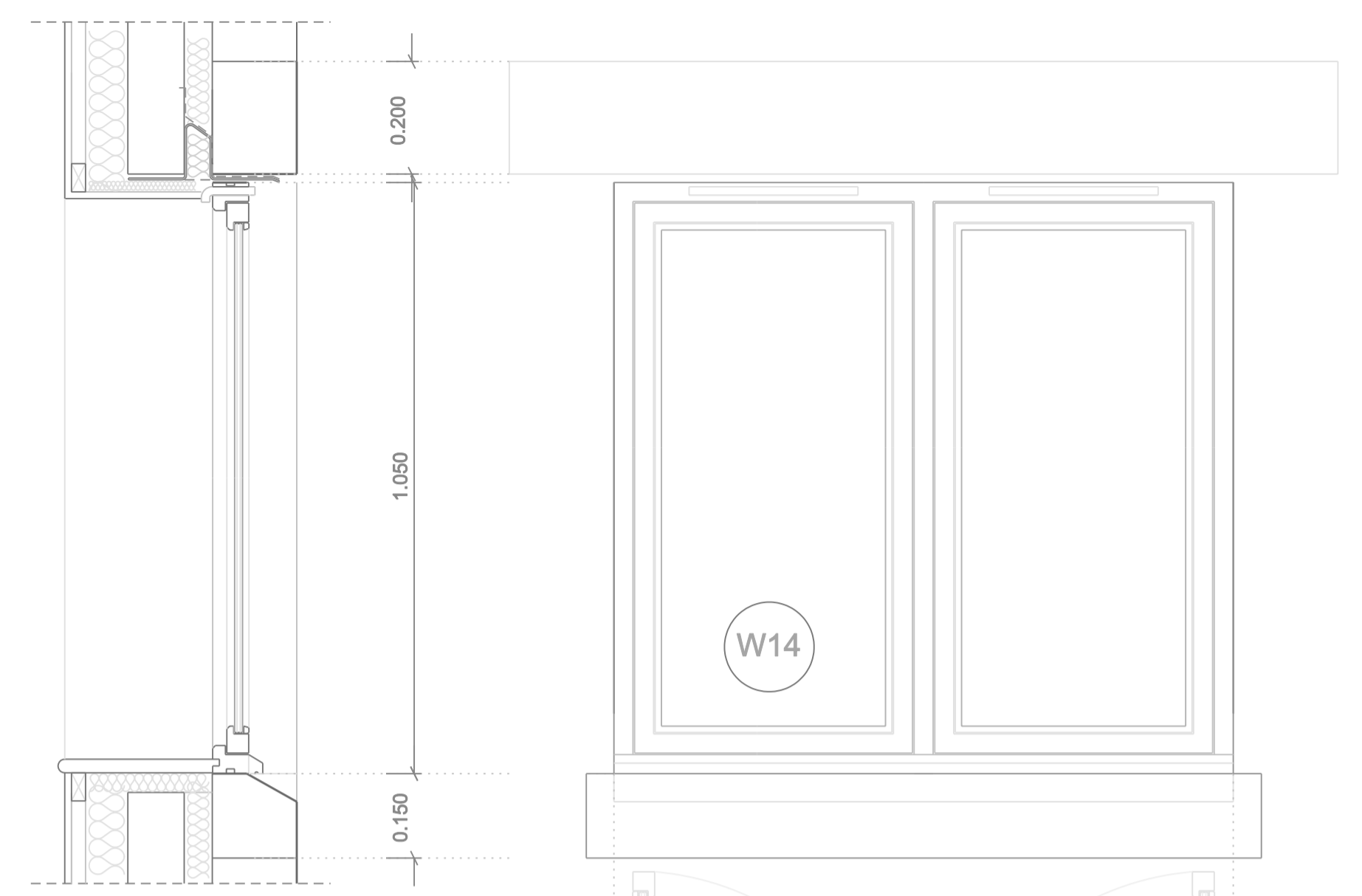


D18 As Proposed 1:10

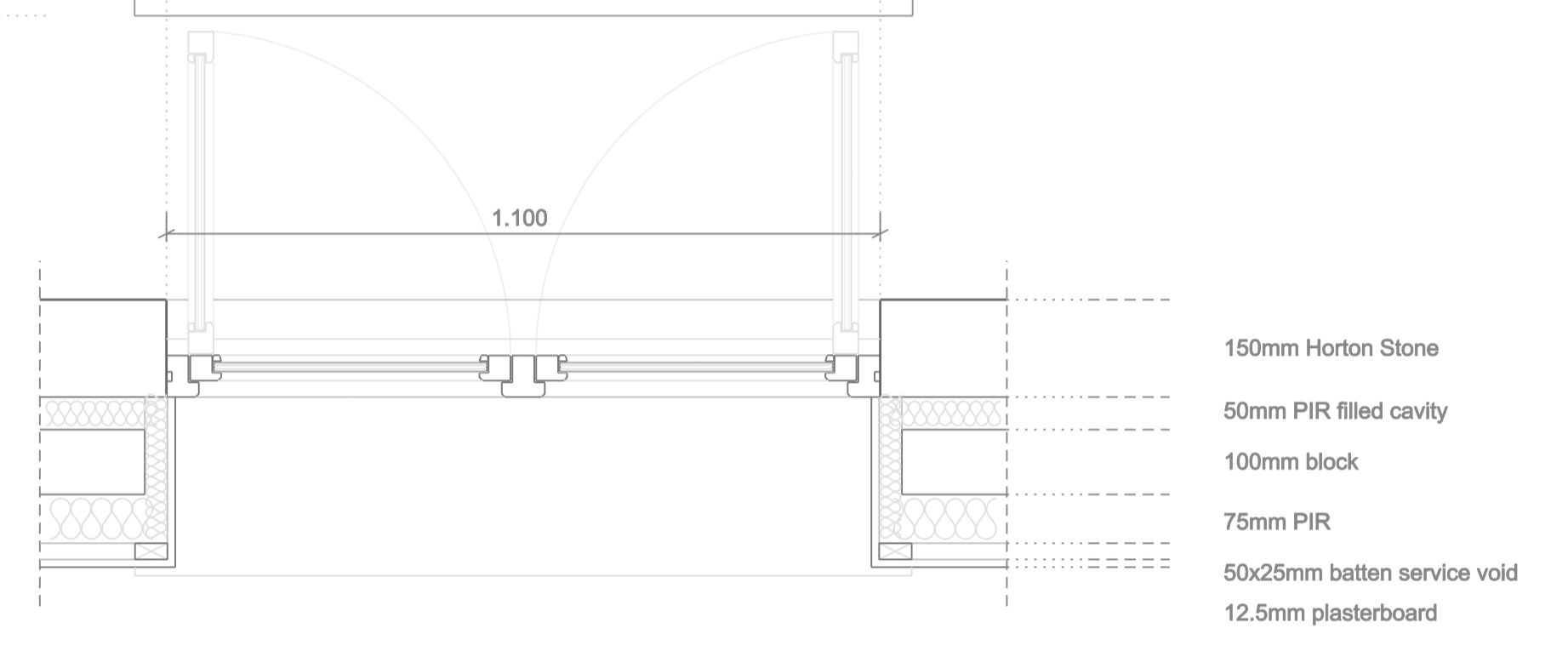


Opening remade in  
 existing masonry wall



W14 As Proposed 1:10

Also:  
 W3  
 The same Hz section  
 with three casements  
 (centre casement fixed)



- 150mm Horton stone
- 200x140mm Horton stone lintel
- 50mm PIR filled cavity
- 100mm Dense concrete block

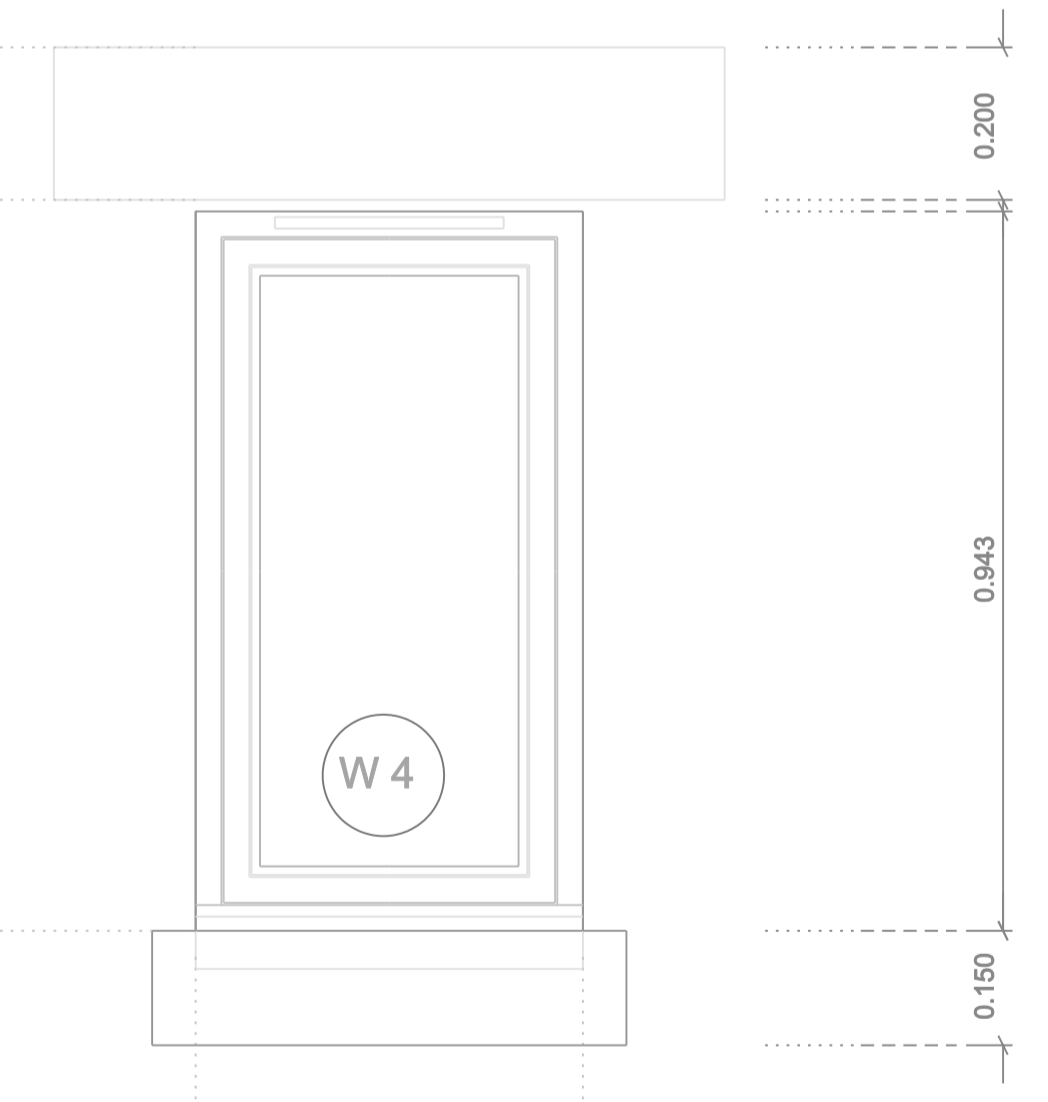
- 12mm Histoglass d/g unit
- 3-6-3mm
- 6mm spacer bar
- 10x21mm rebate required
- Uvalue 1.5

- 75mm PIR
- 25x50mm battens
- 12.5mm plasterboard
- Trickle vent

- 12mm Histoglass d/g units
- Hardwood window frame
- 200x140mm Horton stone
- stop chamfered subsill

W4 As Proposed 1:10

Also:  
 W15  
 W17  
 W18  
 The same Hz section



Contractor/manufacturer to confirm  
 opening sizes prior to manufacture