

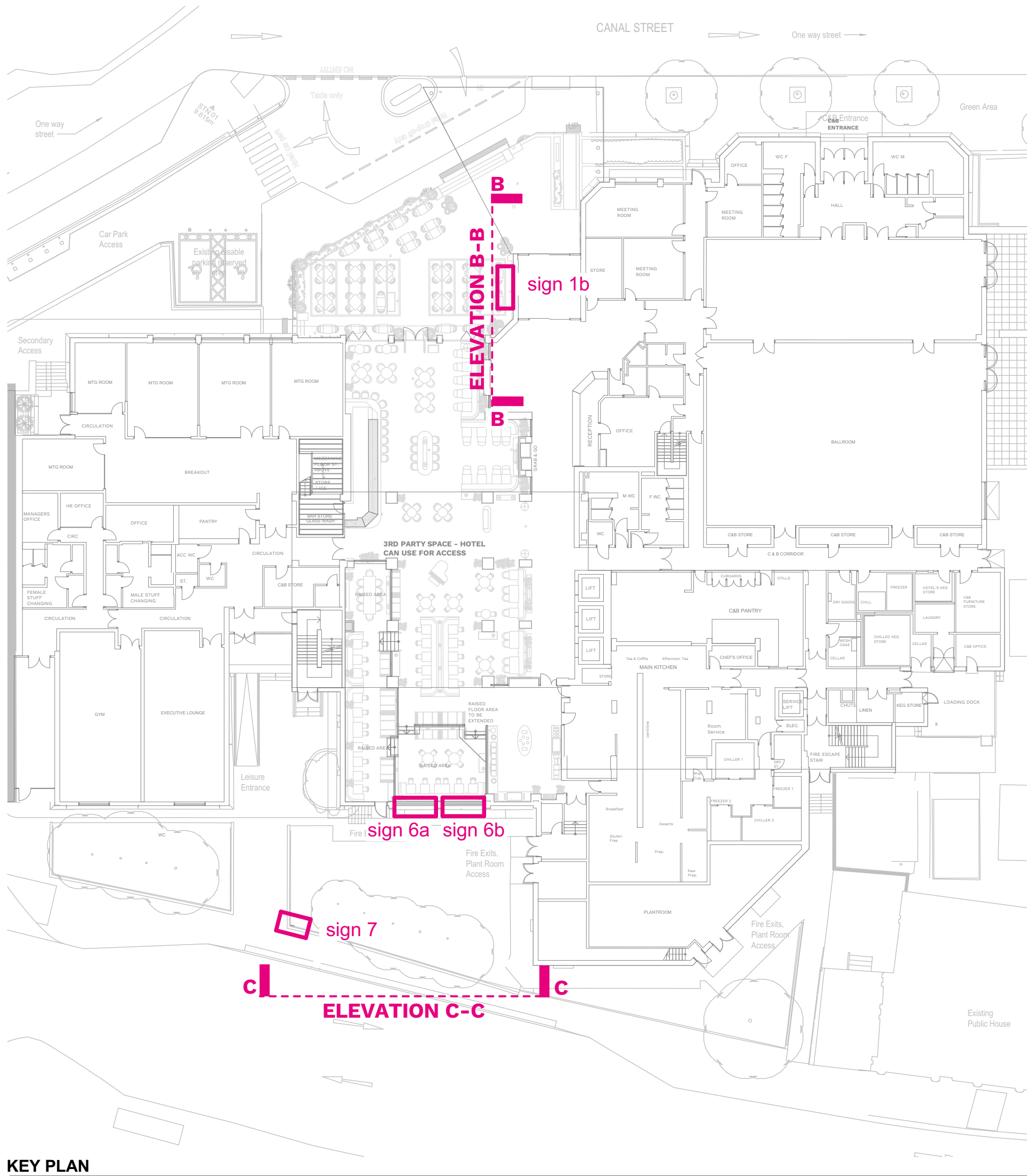
sign 1b

Sign 1b - BROWNS LETTERS  
01no Built up Halo LED illuminated individual letters finished brass, with opal acrylic back faces. Letters secured to substrate with stand off fixings to suit. Buzz bar rail required to carry suitable feed. Illumination not to exceed 300cd approx. Size: 3000 x 440mm approx. 3790mm to the bottom of the sign from GF FFL  
Scale: 1:10

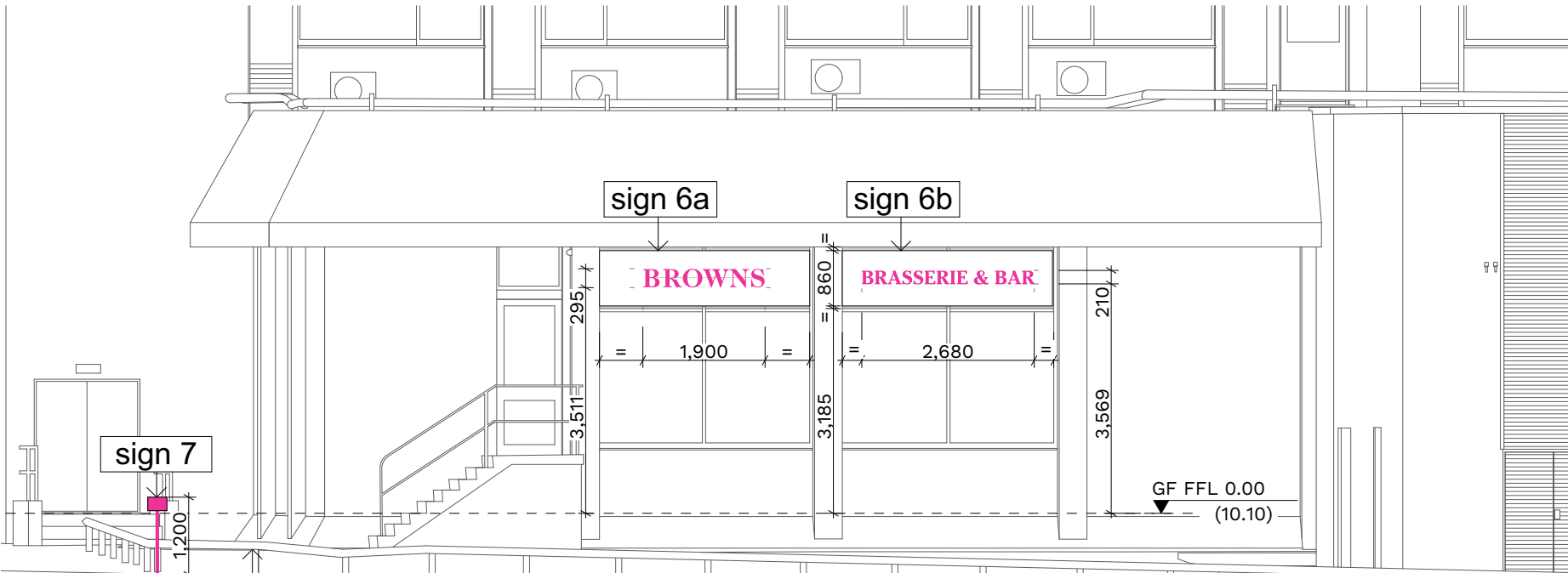


Sign 1a & 1b  
SECTION A-A

LED illumination  
10mm 030 acrylic back tray  
Brass letter  
25mm Stand off spacers suitable for M5 road fixings



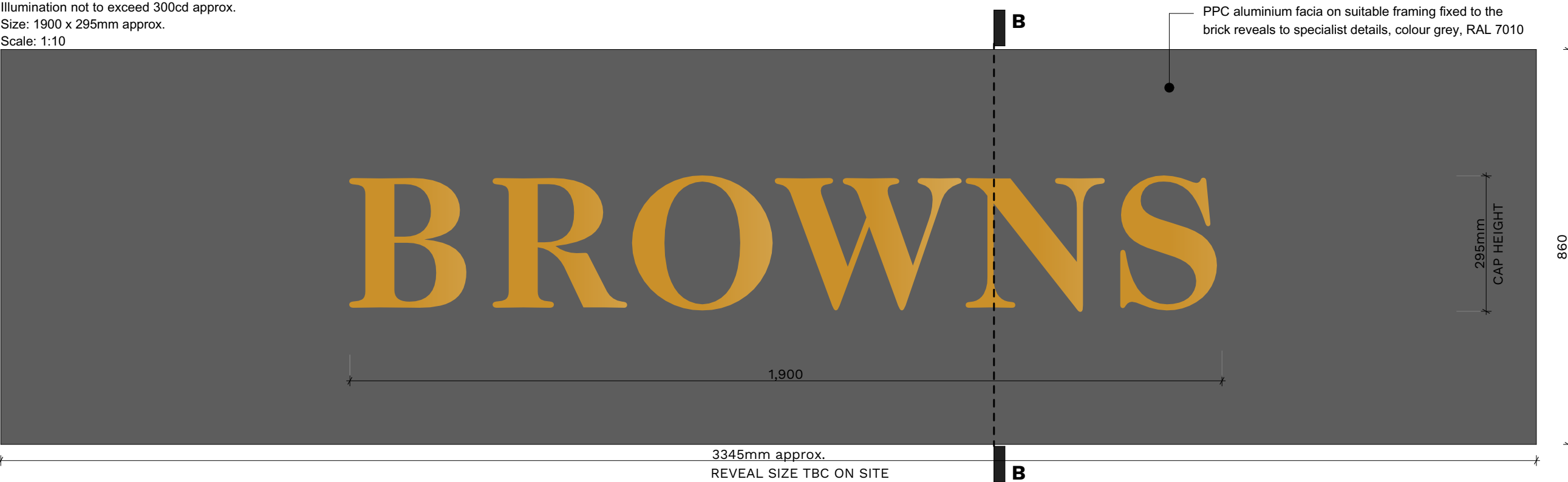
KEY PLAN



PROPOSED ELEVATION C-C

sign 6a

Sign 6a - BROWNS LETTERS  
01no. formed aluminium backing panel with 30mm returns - PPC finished to match mullions, RAL 7010 on suitable framing fixed to the brick reveals/ soffit to specialist details,  
01no Built up Halo LED illuminated individual letters finished brass, with opal acrylic back faces. Letters secured to backing panel with stand off fixings to suit. Buzz bar rail required to carry suitable feed. Illumination not to exceed 300cd approx. Size: 1900 x 295mm approx.  
Scale: 1:10



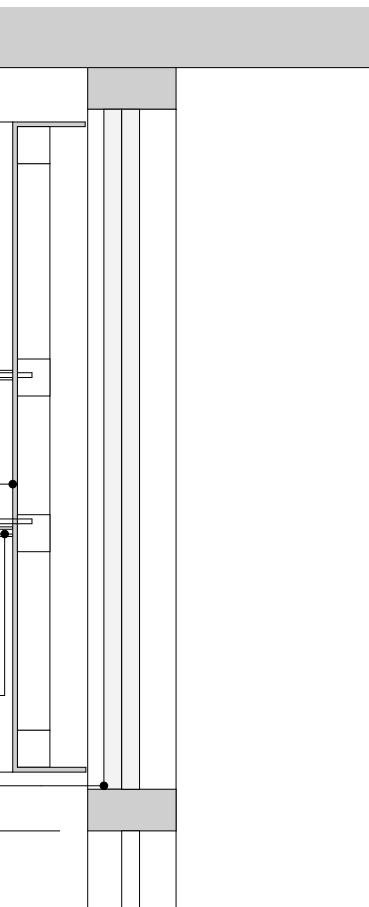
o match mullions, RAL 7010



PROPOSED IMAGE ELEVATION C-C

sign 6b

Sign 6b - BRASSERIE & BAR LETTERS  
01no. formed aluminium backing panel with 30mm returns - PPC finished to match  
01no Built up Halo LED illuminated individual letters finished brass, with opal acrylic back faces. Letters secured to backing panel with stand off fixings to suit. Buzz bar rail required to carry suitable feed. Illumination not to exceed 300cd approx. Size: 2680 x 210mm approx  
Scale: 1:10



Sign 6a & 6b  
SECTION B-B

LED illumination  
10mm 030 acrylic back tray  
PPC aluminium fascia on suitable framing fixed to the brick reveals to specialist details, colour grey, RAL 7010  
Brass letter  
25mm Stand off spacers suitable for M5 road fixings  
Existing blank window

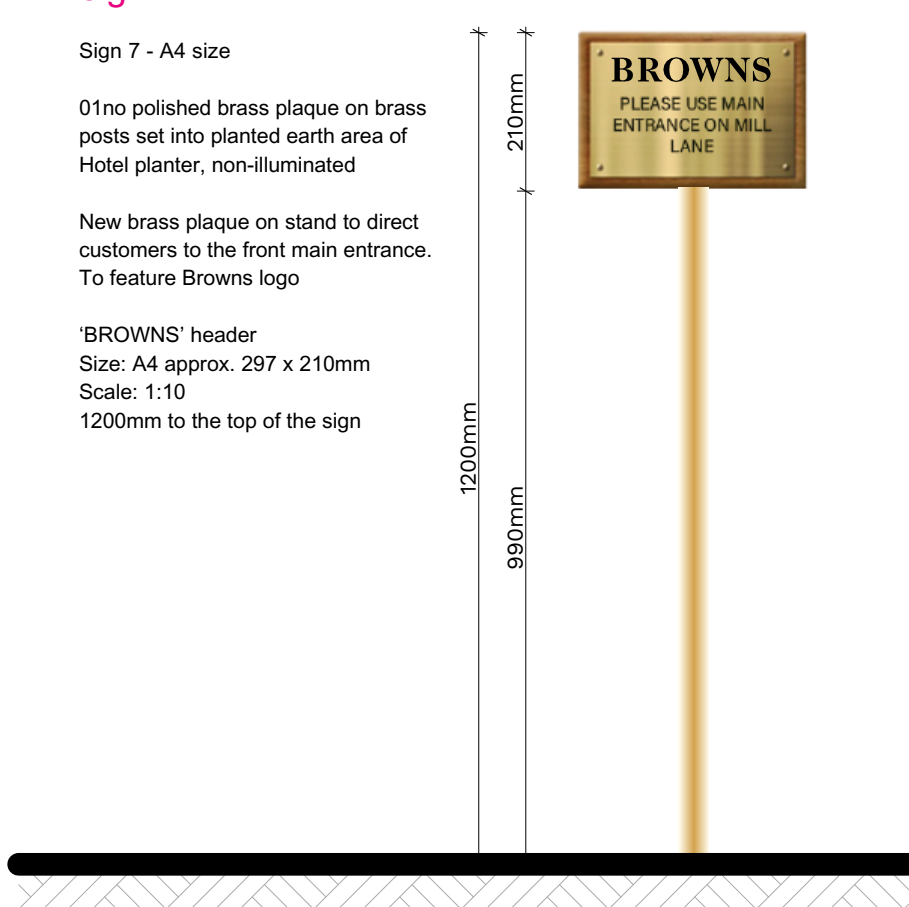
sign 7

Sign 7 - A4 size

01no polished brass plaque on brass posts set into planted earth area of Hotel planter, non-illuminated

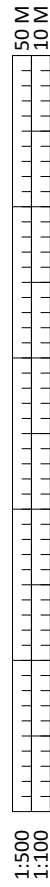
New brass plaque on stand to direct customers to the front main entrance. To feature Browns logo

'BROWNS' header  
Size: A4 approx. 297 x 210mm  
Scale: 1:10  
1200mm to the top of the sign



## Notes

Check all dimensions on site. Do not scale from this drawing  
Report any discrepancies and omissions to HLM Architects  
This Drawing is Copyright ©



P03	UPDATED IN LINE WITH CLIENT COMMENTS	29/04/22	MC	ME
P02	UPDATED IN LINE WITH CLIENT COMMENTS	13/04/22	MC	ME
P01	PRELIMINARY ISSUE FOR COMMENT	25/03/22	MC	ME
Rev	Description	Date	By	Chk

Revisions	Suitability
Project	S2 INFORMATION

## Marriott Cardiff Restaurant

Client

## Project Eagle

Title

## PROPOSED SIGNAGE ELEVATIONS AND DETAILS SHEET 2

Drawing No. Revision

MCR-HLM-00-ZZ-DR-A-40604 P03

Scale @ A1 Drawn

As Drawing MC

Date Checked

24/03/2022 HLM



© HLMArchitects  
2nd Floor  
Ailsa Court  
121 West Regent Street  
Glasgow G2 2SD

www.hlmarchitects.com  
T. +44 (0) 141 226 8320  
F. +44 (0) 141 226 8350  
glasgow@hlmarchitects.com