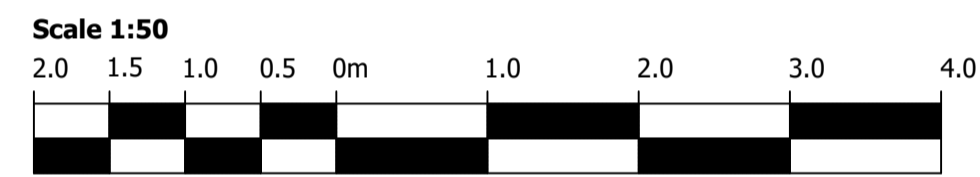




Proposed Front Elevation (E1)



Proposed Side Elevation (E2)

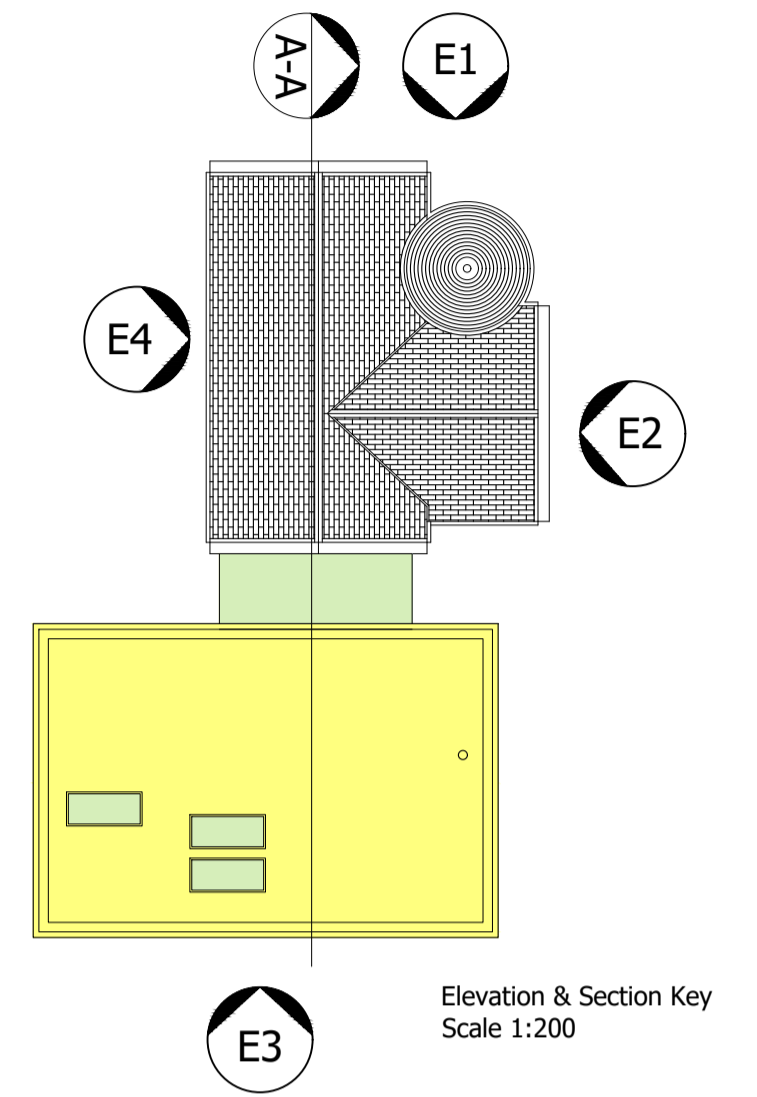


Proposed Materials	
MATERIAL 01	Powder Coated Aluminium Cope Cladding Colour: Anthracite
MATERIAL 02	Vertical Timber Cladding
MATERIAL 03	Glazed Window Unit Frame Colour: Anthracite
MATERIAL 04	Zinc Cladding Colour: Anthracite
MATERIAL 05	Metal Stone Blue
MATERIAL 06	Frameless Glass Balcony

The Contractor must verify all dimensions on site prior to commencing any works, purchase of specified items, and production of fabrication drawings. The contractor takes full responsibility in ensuring that all works executed are in accordance with the current Building Regulations. The Contractor is to advise the Architect of any errors or omissions. No party should take dimensions digitally from this drawing. No variations or modifications to work shown shall be implemented without prior written approval. All issues of this drawing are superseded by the latest revision. All drawings and specifications remain the property of the Staran Architects Ltd.

All drawings to be read in conjunction with the project Health and Safety Plan, any conflicts should be presented to the projects Principal Designer.

© STARAN Architects Ltd



Elevation & Section Key
Scale 1:200

REV	Notes	Date
-	Planning Application	22.04.2022

Project
 Proposed Works to:
 Dollarbeg Lodge, Dollar, Clackmannanshire, FK14 7LZ
 for Mr & Mrs Ritchie

Drawing Title
 Proposed Elevations 1 & 2

Job Number	Drawing Number	Revision	Scale @ A1
2202	GA(00)03	-	1:50

PLANNING

STARAN
 ARCHITECTS