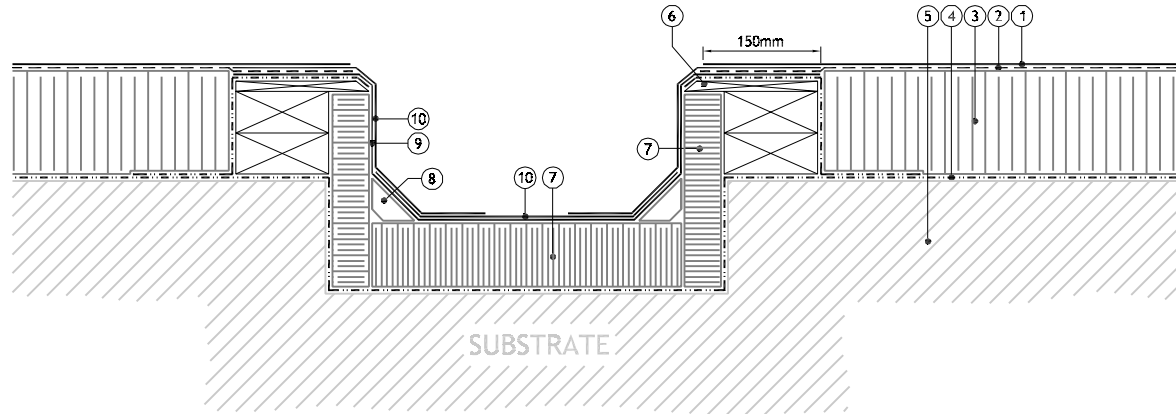


- Notes:
1. Anderson reinforced bitumen mineral cap sheet.
 2. Anderson reinforced bitumen underlay.
 3. Thermazone insulation as specified.
 4. Anderson vapour control layer, as specification.
 5. Substrate, prepared in accordance with current instructions.
 6. Timber hard-edge.
 7. Thermazone insulation board to gutter, as specification.
 8. Thermazone angle fillet, as specification.
 9. Anderson reinforced bitumen underlay, at details.
 10. Anderson reinforced bitumen mineral capsheet, at details.

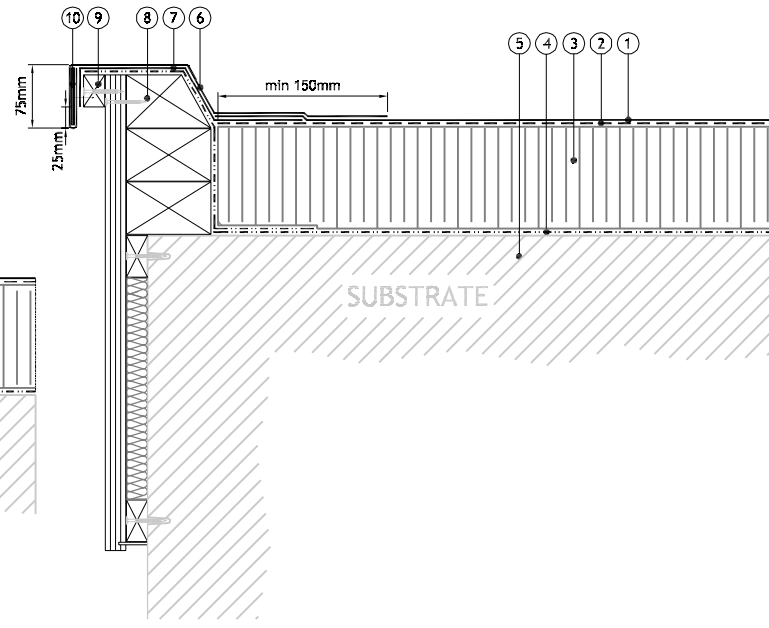
Preparation Notes:
i. Substrate to be prepared in accordance with current instructions, and is dependent upon nature of substrate and specification of vapour control layer. see Icopal project specification or consult Icopal Limited's Technical Services Department for guidance.

Construction Notes:
i. This drawing is intended to demonstrate the methods and recommend detailing of Icopal waterproofing membranes and systems.
ii. Building details shown are intended to be an indication of typical construction only and may vary to actual site and project conditions.

Notes:
i. For roofing product references please see Icopal specification.



Warm Roof to Internal Box Gutter - Stepped in Deck



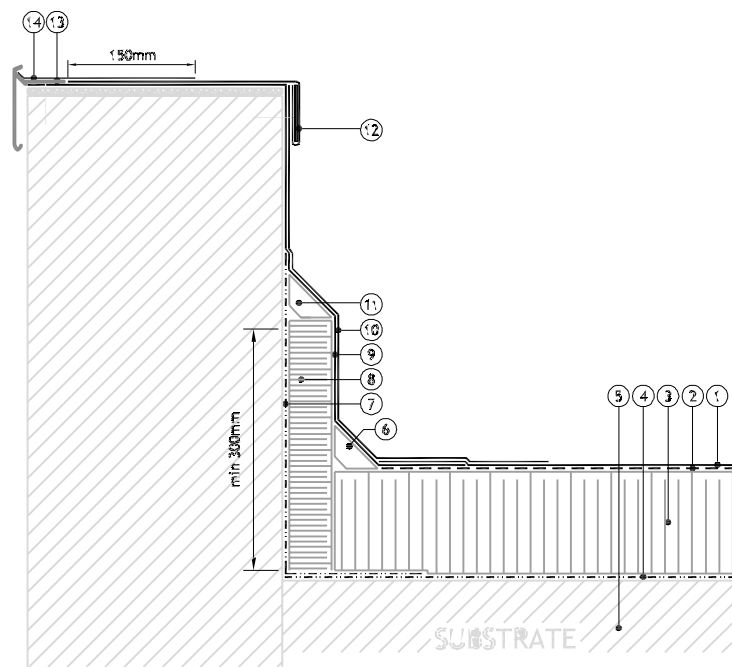
Warm Roof To Watercheck with Welted Drip

- Notes:
1. Anderson reinforced bitumen mineral cap sheet.
 2. Anderson reinforced bitumen underlay.
 3. Thermazone insulation as specified.
 4. Anderson vapour control layer, as specification.
 5. Substrate, prepared in accordance with current instructions.
 6. Icopal reinforced bitumen mineral cap sheet, at details.
 7. Icopal reinforced bitumen, at details.
 8. Timber hard edge.
 9. Drip batten.
 10. Welted drip reinforced with hardboard former.

Preparation Notes:
i. Substrate to be prepared in accordance with current instructions, and is dependent upon nature of substrate and specification of vapour control layer. see Icopal project specification or consult Icopal Limited's Technical Services Department for guidance.

Construction Notes:
i. This drawing is intended to demonstrate the methods and recommend detailing of Icopal waterproofing membranes and systems.
ii. Building details shown are intended to be an indication of typical construction only and may vary to actual site and project conditions.

Notes:
i. For roofing product references please see Icopal specification.

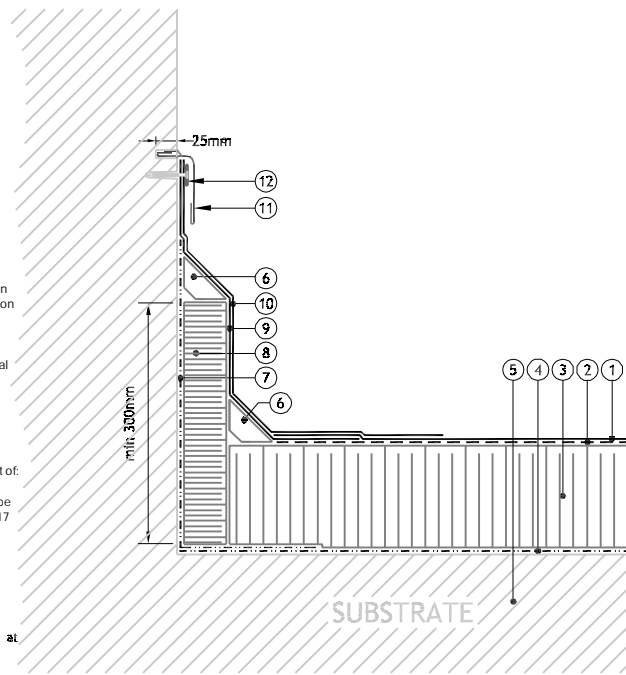


Warm Roof Upstand to Parapet Wall with GRP Edge Trim

- Notes:
1. Anderson reinforced bitumen mineral cap sheet.
 2. Anderson reinforced bitumen underlay.
 3. Thermazone insulation as specified.
 4. Anderson vapour control layer, as specification.
 5. Substrate, prepared in accordance with current instructions.
 6. Thermazone angle fillet, as specification.
 7. Anderson vapour control layer, at details, as specification.
 8. Thermazone insulation, to upstand, as specification.
 9. Anderson reinforced bitumen underlay, at details.
 10. Anderson reinforced bitumen mineral cap sheet, as details.
 11. Angle fillet.
 12. Headlaps, mechanically fastened.
 13. Roogard GRP Edge Trim, mechanically fastened to roof edge.
 14. Capsheet, flashing piece dressed into lip of trim.
- Preparation Notes:
i. Substrate to be prepared in accordance with current instructions, and is dependent upon nature of substrate and specification of vapour control layer. see Icopal project specification or consult Icopal Limited's Technical Services Department for guidance.

Construction Notes:
i. This drawing is intended to demonstrate the methods and recommend detailing of Icopal waterproofing membranes and systems.
ii. Building details shown are intended to be an indication of typical construction only and may vary to actual site and project conditions.

Notes:
i. For roofing product references please see Icopal specification.
ii. Continuity of the waterproof covering must be maintained for a minimum vertical height of 150 mm above finished roof level in accordance with BS 6229 (code of practice).
iii. Skirting details more than 250mm high should be regarded as vertical work and it will be necessary to mechanically fasten the membrane the top edge, in accordance with BS 6217 (code of practice).



Warm Roof Upstand To Abutment Wall with Cover Flashing

- Notes:
1. Anderson reinforced bitumen mineral cap sheet.
 2. Anderson reinforced bitumen underlay.
 3. Thermazone insulation as specified.
 4. Anderson vapour control layer, as specification.
 5. Substrate, prepared in accordance with current instructions.
 6. Thermazone angle fillet, as specification.
 7. Anderson vapour control layer, at details, as specification.
 8. Thermazone insulation, to upstand, as specification.
 9. Anderson reinforced bitumen underlay, at details.
 10. Anderson reinforced bitumen mineral cap sheet, as details.
 11. Cover flashing, as specification: chased and pointed.
 12. Fixing Bar, mechanically fastened to upstand.

Preparation Notes:
i. Substrate to be prepared in accordance with current instructions, and is dependent upon nature of substrate and specification of vapour control layer. see Icopal project specification or consult Icopal Limited's Technical Services Department for guidance.

Construction Notes:
i. This drawing is intended to demonstrate the methods and recommend detailing of Icopal waterproofing membranes and systems.
ii. Building details shown are intended to be an indication of typical construction only and may vary to actual site and project conditions.

Notes:
i. For roofing product references please see Icopal specification.
ii. Continuity of the waterproof covering must be maintained for a minimum vertical height of 150 mm above finished roof level in accordance with BS 6229 (code of practice).
iii. Skirting details more than 250mm high should be regarded as vertical work and it will be necessary to mechanically fasten the membrane the top edge, in accordance with BS 6217 (code of practice).

NOTES

This drawing and all the information shown is the property of Stace LLP and shall not be copied in whole, or in part, or used for any other purpose without written permission of the company.

All figured dimensions are to take precedence over scaled dimensions. All dimensions are to be checked on site. Any discrepancies must be reported to the Designer for verification prior to commencement of the affected works.

If this Auto CAD drawing is being read by any system other than Auto CAD it should be checked against an original hard copy printed by Stace LLP. Stace LLP cannot accept liability for omissions.

The original measured survey was prepared by Icopal

Rev	Date	Description	Drn

PLANNING



Client

Harlow Council

Project

Five Acres, Harlow

Drawing Title

Roof Section Details

Scale	Sheet Size
NTS	A3
Date	Drawn by
15/10/2021	TC
Drawing No.	Rev
2021/0833/21	A