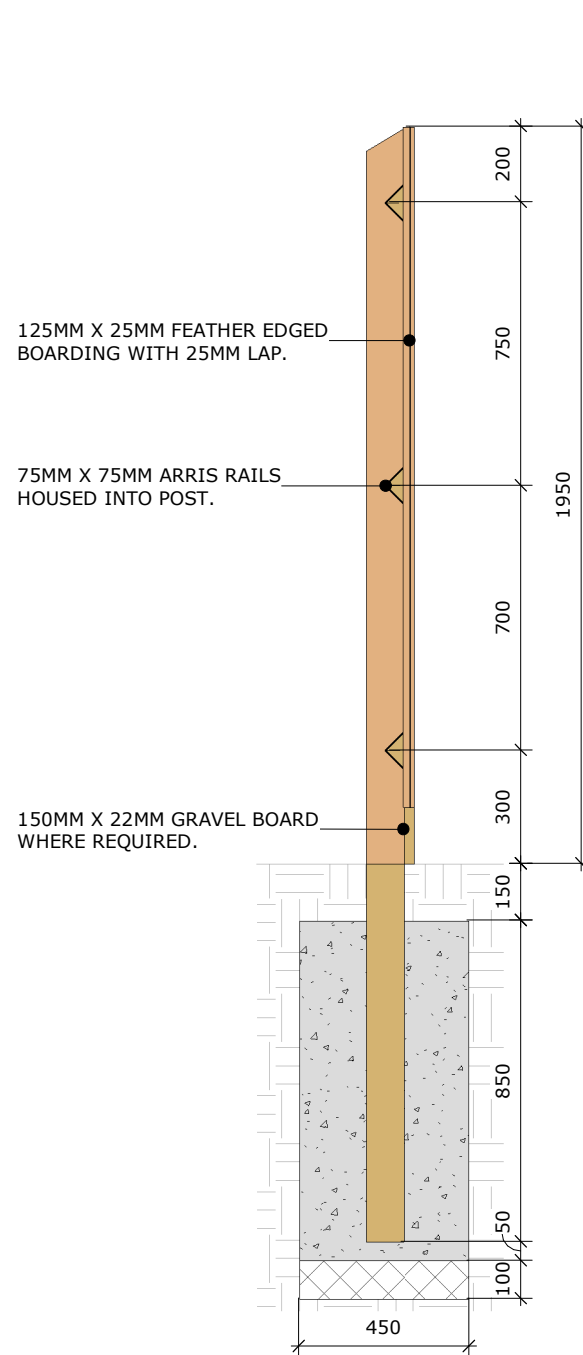
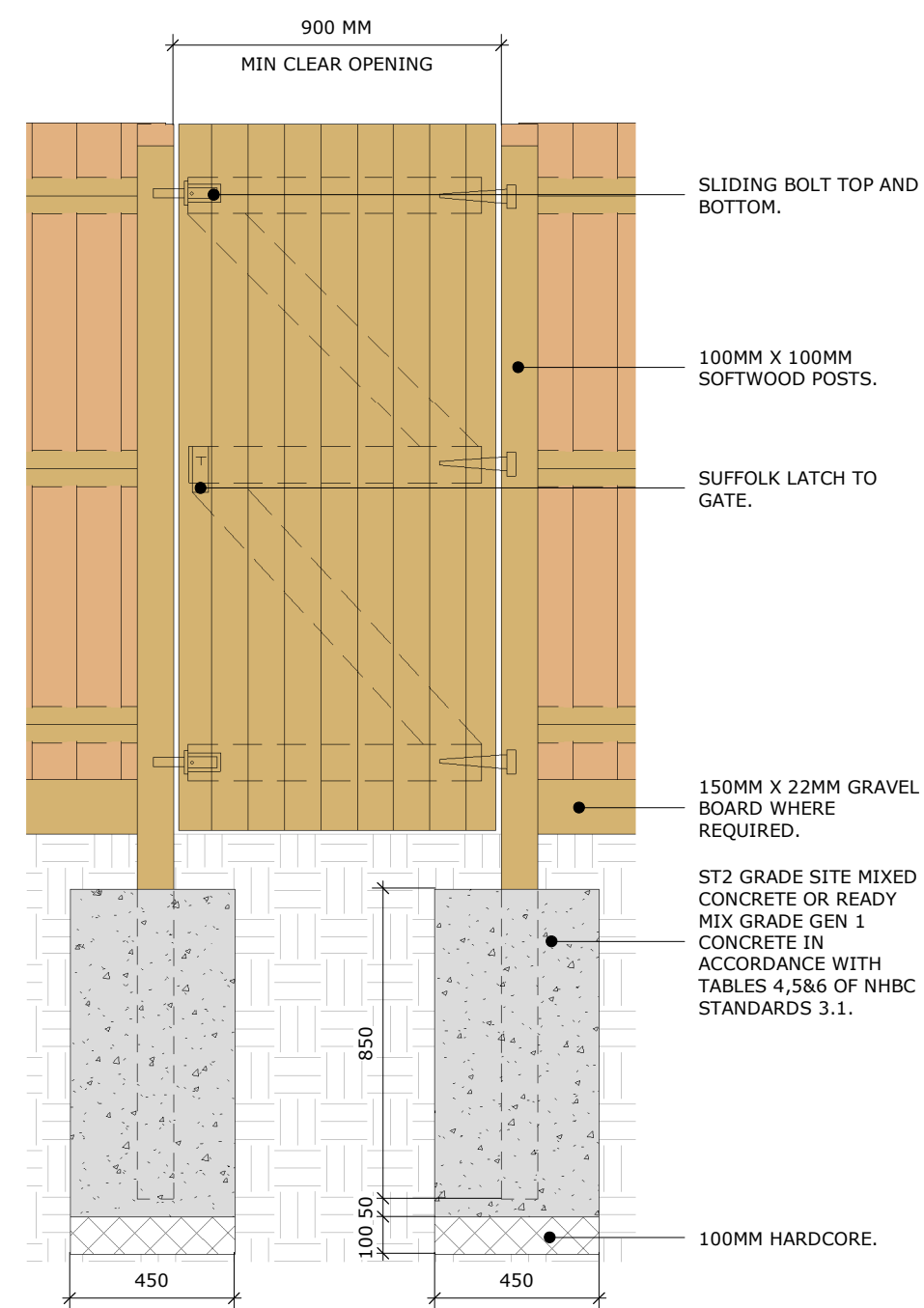


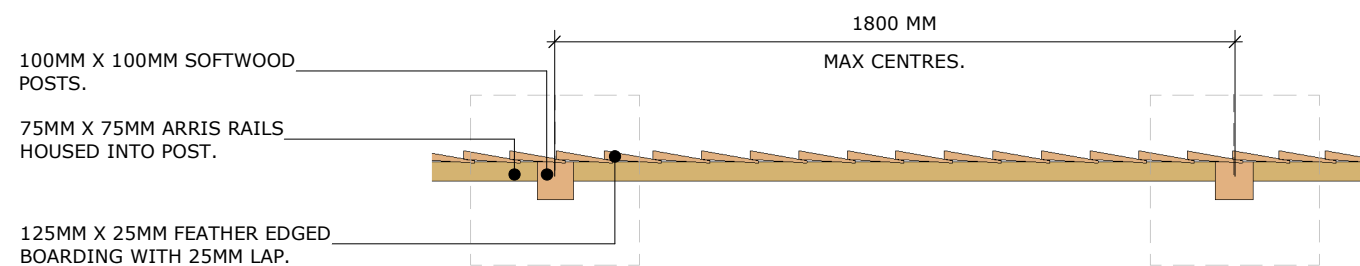
CLOSE BOARD FENCE - ELEVATION



SECTION



GATE ELEVATION



PLAN

NOTES:

- ALL TIMBER TO BE FSC AND IMPREGNATED WITH AN APPROVED PRESERVATIVE.
- BUSINESS UNIT TO ASSESS SUITABILITY OF DETAIL FOR INDIVIDUAL DEVELOPMENTS AND CONSULT WITH STRUCTURAL ENGINEER ACCORDINGLY.
- TO BE READ IN CONJUNCTION WITH BS1722 PART 5.

category							
EXTERNAL WORKS DETAILS							
description							
EXTERNAL WORKS - CLOSE BOARDED FENCE (1800MM)							
scale							
1 : 20							revision
							00
project							
GROUP	VIS	S	EX	D2	A	FC	0213
originator							
volume							
level							
type							
role							
Class							
number							

Vistry Group

STANDARD DETAIL

SUBJECT TO NHBC APPROVAL