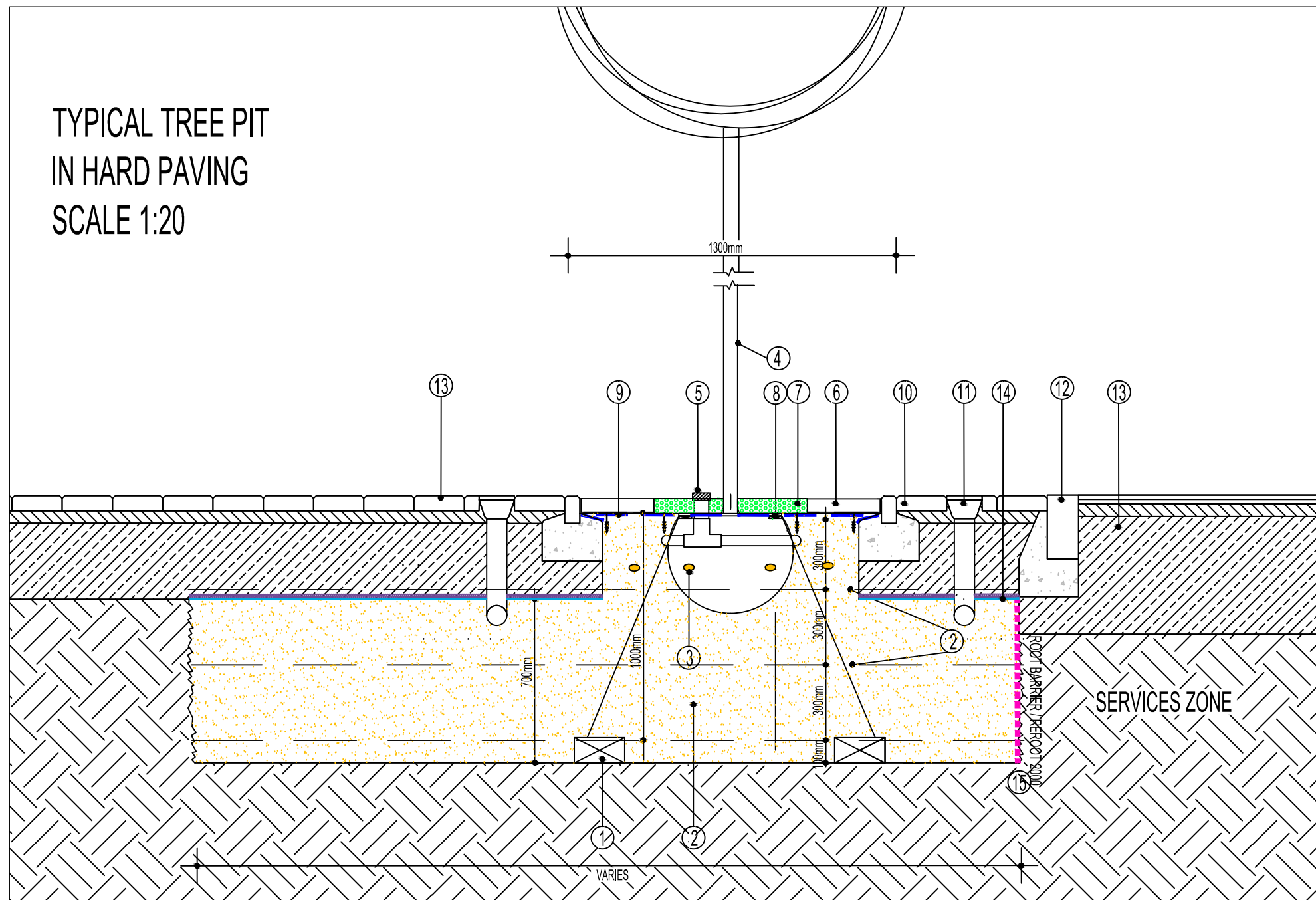


TYPICAL TREE PIT IN HARD PAVING SCALE 1:20



NOTES

- DEAD MEN ANCHORS TO BE 2No. CONCRETE KERB SECTIONS OR SIMILAR TO BS4043.
- "AMENITY TREE SOIL" SUPPLIED BY GREEN-TECH TEL: 01423 332100. TREE SOIL TO BE BACKFILLED IN 300mm LAYERS, EACH COMPACTED TO 3.0 MEGAPASCALS ACHIEVING 78-82% CBR RATING AND EACH LAYER TESTED WITH PENETROMETER OR SIMILAR APPROVED APPARATUS. ALL IN ACCORDANCE WITH SUPPLIERS INSTRUCTIONS. ENSURE BASE OF PIT IS FORKED OVER TO ENSURE ADEQUATE DRAINAGE.
- APPLY SLOW RELEASE FERTILIZER AT RATE OF NO. 7 SIERRABLEN FLORA 15G TABLETS 15-9-9 PER TREE, APPROXIMATELY 700 - 1000MM DIAMETER AROUND THE ROOTBALL AND HALFWAY DOWN THE ROOTBALL, AVAILABLE FROM AMENITY LAND SOLUTIONS, CONTACT TEL. 01952 641949, ALL TO THE MANUFACTURERS INSTRUCTIONS.
- PROPOSED TREE (REFER TO PLANT SCHEDULES ON MAIN DRAWINGS FOR SPECIES).
- MONA RELIEF GRANDE ARIA PERFORATED IRRIGATION WATERING PIPE, (60mm DIAMETER) INCLUDING END CAP, AVAILABLE FROM GREEN-TECH TEL: 01423 332100 OR SIMILAR AND APPROVED. TO BE POSITIONED AROUND TOP OF ROOTBALL, WITH OPEN END AS CLOSE AS POSSIBLE TO TRUNK.
- CIRCLE TREE GRILL, DTS YARE, COLOUR: BLACK, 1200mm DIAMETER, PRODUCT CODE YARE12A. AVAILABLE FROM GREENBLUE URBAN TEL 01580 830800 OR SIMILAR AND APPROVED. FIXING AND MAINTENANCE TO BE AS PER MANUFACTURERS SPECIFICATION. REFER TO LANDSCAPE PLANS FOR LOCATION.
- TREE GRILLE INTERNAL APERTURE WITH INFILLED WITH CHUNKY CHIP LONGEVITY BARK MULCH AVAILABLE FROM SUFFOLK WOODCHIPS LTD TEL. 07881 904100 OR 01842 813 555, TO A DEPTH OF 60MM.
- ROOTBALL TO BE SECURED WITH TIMBER FRAME OF 4No. 75 x 25 x 600mm PRESSURE TREATED BOARDS ATTACHED TO THE DEAD MEN WITH MILD STEEL WIRE (6-10mm DIAMETER), TO BE TIGHTENED WITH TURNBUCKLES AT TOP.
- "HYTEX COVERTEX" AVAILABLE FROM HY-TEX UK LTD (TEL. 01422-720097), 1m x 1m SQUARE CUT AROUND TREE STEM. TO BE PEGGED IN AT 300mm CENTRES WITH PLASTIC PEGS OR SIMILAR AND APPROVED OR SIMILAR AND APPROVED.
- PEDESTRIAN AREA BUILD UP AND EDGING TO ARCHITECT/ENGINEERS SPECIFICATIONS
- IRRIGATION AND AERATION SYSTEM. TYPE: MONA RELIEF PIAZZA WITH PERFORATED PIPE 2m DIAMETER. ENSURE INLET IS FLUSH WITH FINISHED PAVED LEVEL. AVAILABLE FROM GREEN-TECH TEL: 01423 332100.
- FLUSH KERB TO HIGHWAY SPECIFICATION.
- VEHICULAR AREA BUILD UP AND EDGING TO ARCHITECT/ENGINEERS SPECIFICATIONS.
- CELL WEB OVER GEOTEXTILE PROTECTION TERRAM 1000 TO REINFORCE THE HARD LANDSCAPE AREAS, OR SIMILAR. REFER TO DETAILS BY ENGINEERS.
- INSTALL ROOT PROTECTION BARRIER TYPE REROOT 2000 (CODE RER210X1.0A), THICKNESS 2mm, MIN. DEPTH 1000mm, AVAILABLE FROM GREENBLUE URBAN, TEL: 01580 830800 OR SIMILAR AND APPROVED. ROOT BARRIER TYPE: REROOT 2000 POSITIONED WHERE SHOWN IN TREE PIT DETAIL OR ON DRAWING NO. JBA 211/187 - 04 TO 17. REMOVE SHARP OBJECTS FROM THE TRENCH WALLS AND THE BACKFILL MATERIAL. IF REQUIRED OVERLAP BY 500mm TO JOIN REROOT 2000 AND SECURE WITH ROOT BARRIER JOINTING TAPE. ENSURE THE TOP OF THE BARRIER FINISHES AT LEAST 10MM ABOVE FINISHED SOIL LEVELS.

GENERAL NOTES:-

- ENSURE IMPORTED SOILS ARE COMPLIANT WITH BS3882:2015. TOPSOIL MUST ALSO BE HANDLED AND STORED AS PER THE BS.
- HEAVY CLAY SUBSOIL TO BE AMELIORATED BEFORE BACKFILLING DEEPER LAYERS
- ALL VEGETATIVE MATERIAL, LITTER AND OTHER DEBRIS IS TO BE REMOVED AND SIDES OF THE TREE PIT MUST BE FORKED OVER BEFORE BACKFILLING WITH SOIL.
- WATER IN WITH 50 LITERS OF WATER PER TREE WITHIN FOUR HOURS OF PLANTING.
- ALL DIMENSIONS ARE IN MILLIMETERS.
- ALL DIMENSIONS ARE TO BE CHECKED ON SITE.
- (C) JAMES BLAKE ASSOCIATES LTD 2022

NOTES:-

TREE PIT DETAIL RELATES TO TREES IN HARD SURFACED AREAS PIT DIMENSIONS VARY BUT SHOULD HAVE A MIN. VOLUME OF 9m².

ROOT BARRIER TO BE IMPLEMENTED WHERE SHOWN ON DRAWINGS NO. JBA 21/307 - 01 TO 13.

ROOT BARRIER SUBJECT TO REQUIREMENT, TO BE COORDINATED WITH ENGINEERS.

CLIENT VISTRY HOMES EAST MIDLANDS		DWG. TITLE TYPICAL TREE PIT & GRILLE DETAIL IN HARD LANDSCAPE				
SITE MEPAL ROAD, SUTTON CAMBS						
PURPOSE OF ISSUE PLANNING						
DRG BY PB	CHECKED JBA	AUTH'D JBA	SCALE 1:20@A3	DATE APRIL 2022	DWG NO. JBA 21/307 - DT01	REV. -

JAMES BLAKE
ASSOCIATES

Head Office:
34-52 Out Westgate, Bury St Edmunds, Suffolk, IP33 3PA Tel: (01284) 335797
jamesblake@jba-landmarc.com www.jba-landmarc.com
LANDSCAPE ARCHITECTURE o ARBORICULTURE o ECOLOGY