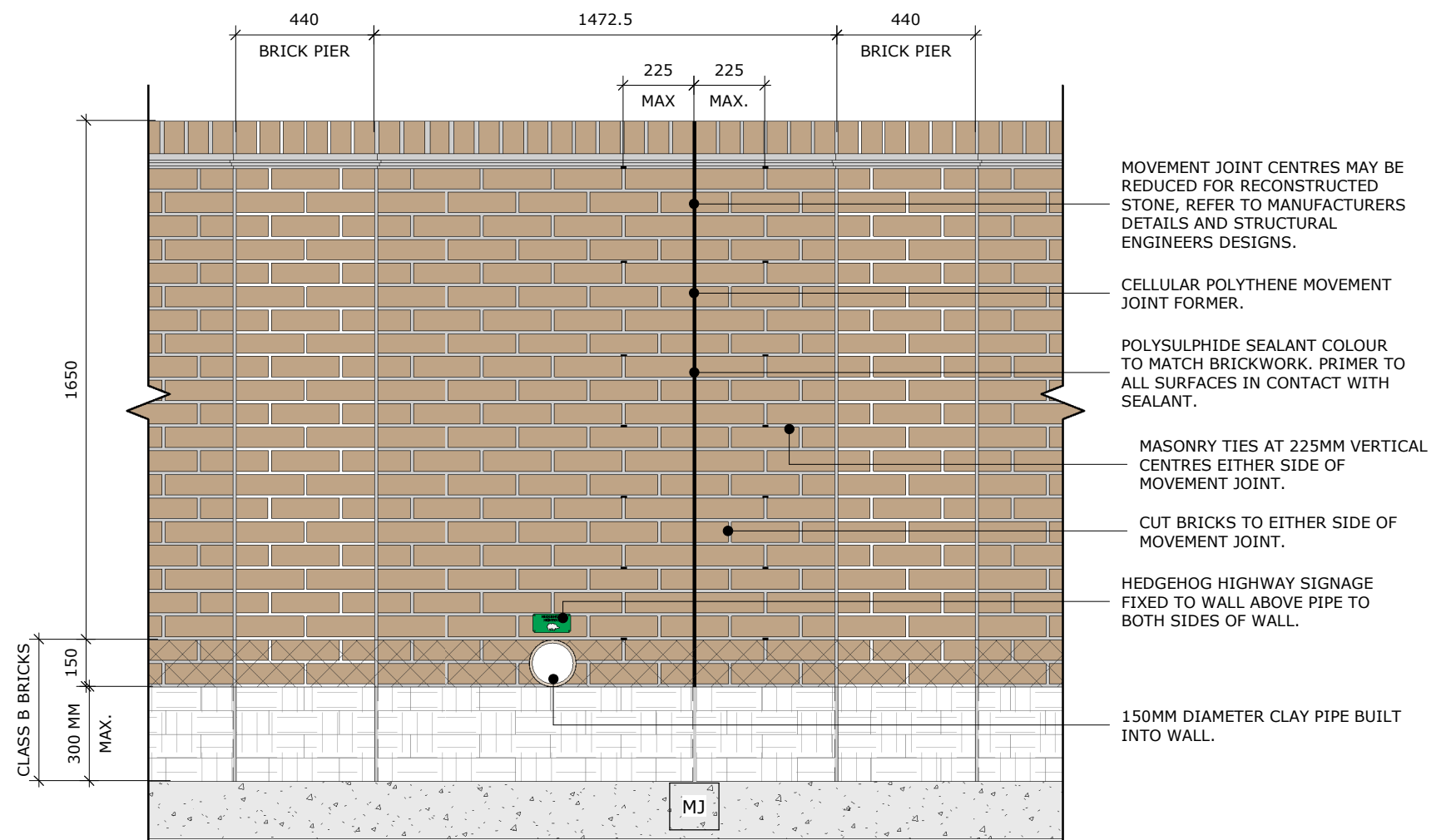


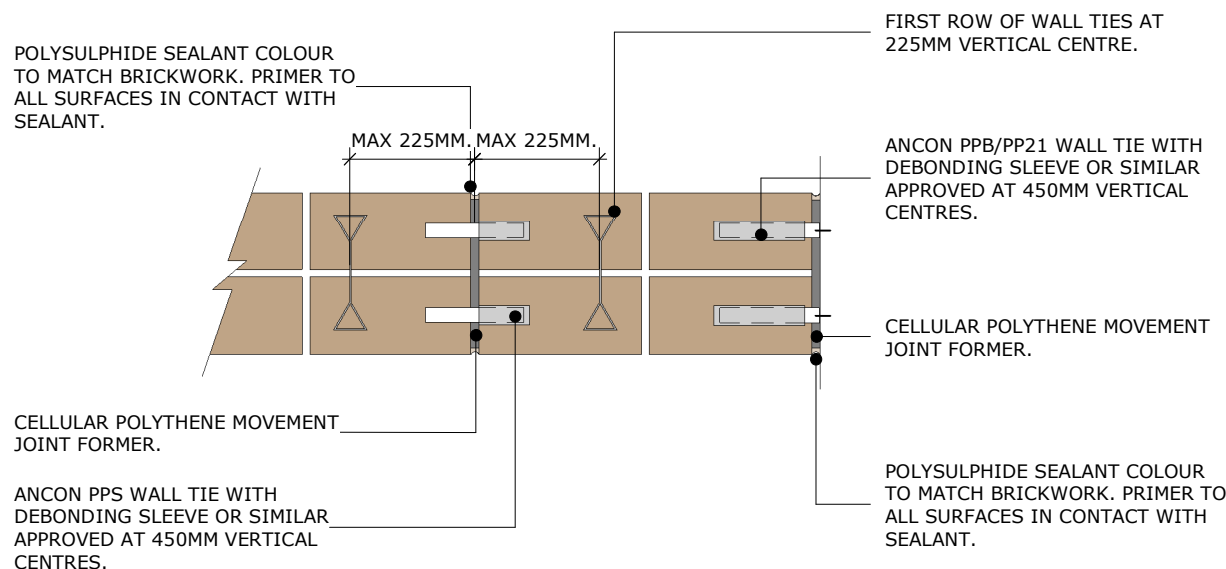
SECTION
1 : 20

REQUIRED GROUND BEARING CAPACITY AT FOUNDATION FORMATION = 75KN/M2. TO BE CONFIRMED BASED ON SITE SPECIFIC GROUND CONDITIONS.

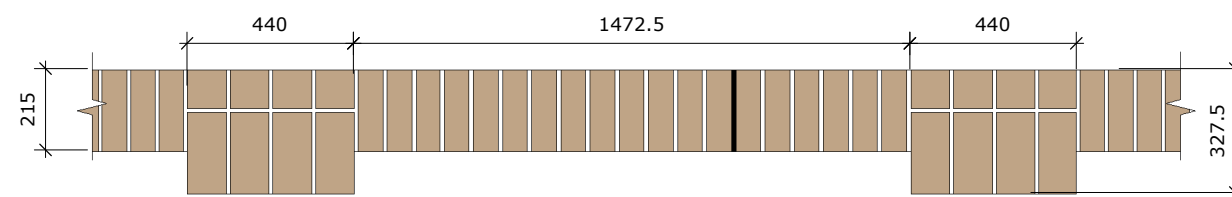


ELEVATION
1 : 20

IF MATERIALS USED WITHIN WALL ARE FROST RESISTANT (EG TYPE F BRICKS IN HIGH DURABILITY MORTAR) A DPC AT LOW LEVEL IS UNNECESSARY.



MOVEMENT JOINT AND SLIP TIE DETAIL AT ABUTMENT
1 : 20



PLAN
1 : 20

MAXIMUM WIND PRESSURE = 0.43KN/M².

| | | | | | | | |
|---|------------|--------|-------|------|------|-------|----------|
| category | | | | | | | |
| EXTERNAL WORKS DETAILS | | | | | | | |
| description | | | | | | | |
| EXTERNAL WORKS - 1.8M BRICK SCREEN WALL, SHELTERED LOCATIONS, MAX WIND PRESSURE 0.43KN/M2 | | | | | | | |
| scale | | | | | | | revision |
| As indicated | | | | | | | 00 |
| project | originator | volume | level | type | role | Class | number |
| GROUP | - VIS | - S | - EX | - D2 | - A | - FC | - 0261 |

Vistry Group

STANDARD DETAIL
SUBJECT TO NHBC APPROVAL