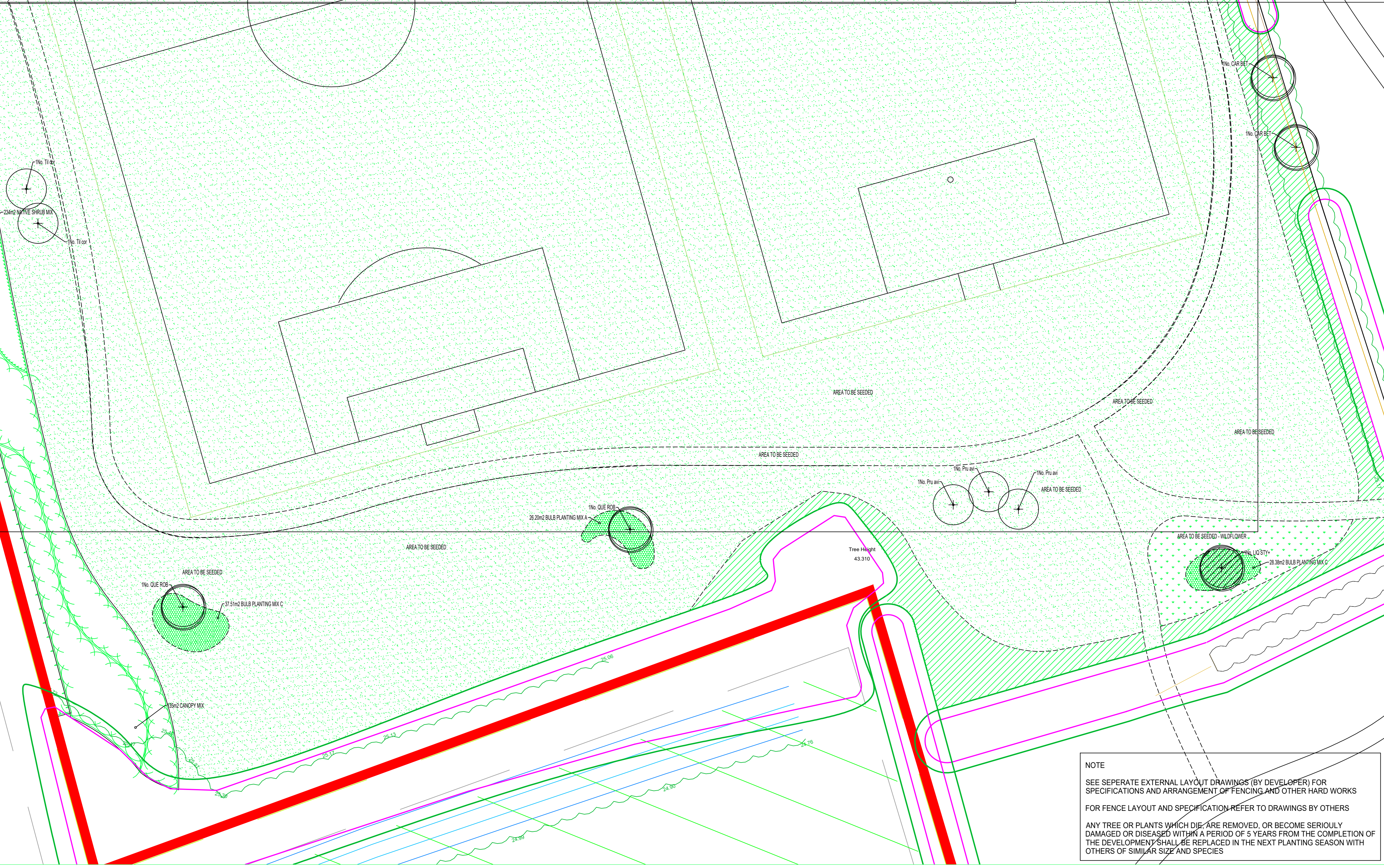


SPECIFICATION NOTES - REFER ALSO TO THE TENDER DOCUMENT

- 1.0 Setting out
1.1 Flurring shall be set out exactly as shown on the drawing and measured from existing fixed points. Curved lines shall be set out using self-centering on the ground using two paced stakes and a line between, or with the use of a spring line. The ground between the stakes and corners shall be cut to from a smooth and even flowing line. Check that all setting out conforms to the plan before excavation and planting works are carried out. Failure to do so may result in rejection of the work by the landscape architect and any rework attributable to the contractor's expense.

- 1.1 Flurring shall be set out exactly as shown on the drawing and measured from existing fixed points. Curved lines shall be set out using self-centering on the ground using two paced stakes and a line between, or with the use of a spring line. The ground between the stakes and corners shall be cut to from a smooth and even flowing line. Check that all setting out conforms to the plan before excavation and planting works are carried out. Failure to do so may result in rejection of the work by the landscape architect and any rework attributable to the contractor's expense.



KEY

- Proposed feathered tree including stake and tie
Proposed standard tree including double stake and tie
Proposed heavy standard tree including double stake and tie
Shrub and herbaceous planting including biodegradable sheet and bark mulch
Groundcover planting in mixes including biodegradable sheet and bark mulch
Native WHP and shrub planting in mixes including biodegradable sheet and bark mulch
Hedge planting including biodegradable sheet and bark mulch
Timber board edging to separate from gravel area
Washed rounded buff coloured gravel 20mm gauge
Seeded grass area
Wildflower seeded area
Bulb planting in mixes for spring flowering varieties
Specimen shrubs in shrub beds or pit planted in grass/gravel areas
Existing tree to be retained
Existing vegetation group or hedge to be retained
ASF 100 cast iron bollard
Bitumen macadam footpaths and hardstandings
ASF 600 front opening litter bin
ASF 602 steel seat

LOCATION PLAN - NOT IN SCALE



SCHEDULE OF PLANTS
SHRUBS: QTY CODE PLANT NAME STOCK SPACING SHC DFB MIN HEIGHTS/SPREAD
SPECIMENS PLANTED IN BEDS, GRASS OR GRAVEL
BULB PLANTING MIXES
FEATHERED TREES
STANDARD TREES
HEAVY STANDARD TREES

NATIVE HEDGE MIXES
PLANT MIXES
AREA SEED MIX NAME
30% NATIVE BUFFER PLANTING MIX A
35% NATIVE BUFFER MIX - DAMP SOL
30% SUB CANOPY MIX
130% SPTS sports grass mix
21% WILLOW meadow mix
20%21 Area to be turfed

NOTE
SEE SEPARATE EXTERNAL LAYOUT DRAWINGS (BY DEVELOPER) FOR SPECIFICATIONS AND ARRANGEMENT OF FENCING AND OTHER HARD WORKS FOR FENCE LAYOUT AND SPECIFICATION REFER TO DRAWINGS BY OTHERS
ANY TREE OR PLANTS WHICH DIE, ARE REMOVED, OR BECOME SERIOUSLY DAMAGED OR DISEASED WITHIN A PERIOD OF 5 YEARS FROM THE COMPLETION OF THE DEVELOPMENT SHALL BE REPLACED IN THE NEXT PLANTING SEASON WITH OTHERS OF SIMILAR SIZE AND SPECIES

NOTES AND ABBREVIATIONS
R.B. = Rootball stock
C.G. = Container grown stock
O.G. = Open ground stock to be planted Nov - March 1st
FTH = Feathered tree
STD = Standard tree
HYSTD = Heavy Standard tree
HYSTD-E = Extra Heavy standard tree
BLE = Broad Leaf Evergreen
CON = Conifer
L = Like container
D = "Distance from Buildings" based on minimum building foundation depths
Min H = "Maximum Height" of tree
WD = "Water Demand" of tree
SHC = "Shrub Height Classification"
a-c = 600mm mature height
B = 600mm - 1.8m mature height
C > 1.8m mature height with low water demand and slow growth
D = 1.8m - 3m mature height
E = 3m - 5m mature height
F > 5m mature height
Note: Plants not classified within the JBA SHC are NOT designated as shrubs.
JBA understood shrubs to be defined as those plants of perennial habit with woody stems.
*Griff size given for standard trees, otherwise all sizes refer to height. All sizes are the minimum acceptable.
+ Shrub specified to 3 in size shall be 400-600mm minimum height and spread and 1.8m stock shall be 300-400mm minimum height and spread. These heights and spreads in relation to pot size are just a guide and the "National Plant Specification" sizes will be accepted (but will be seen as the absolute minimum acceptable). Any shrubs supplied which are smaller than they will be rejected at once.
-Cornus varieties shall be twice transplanted and pruned to form bushy trained plants. Leggy plants with few branches will be rejected, as will leggy plants which have been pruned hard.
-Plants shall be completely hardened off, as plants which show signs of scorching after planting will be rejected.
REFER TO THE ACCOMPANYING MEASURED WORKS SCHEDULE DOCUMENT FOR MORE INFORMATION
CHANGES TO SUPPLIERS/MANUFACTURERS ARE TO BE AGREED, AND APPROVED.
SUBSTITUTIONS TO SHRUBS/TREES/VARIABLES ARE TO BE AGREED WITH LANDSCAPE ARCHITECT.
DO NOT SCALE FROM THIS DRAWING
ALL DIMENSIONS TO BE CHECKED ON SITE
CLIENT: VETRY HOMES EAST MIDLANDS
SITE: HEPHAI ROAD, SUTTON CAMBS
PURPOSE OF ISSUE: DRAFT
DATE: 15/04/2022
SCALE: 1:200
DATE: 15/04/2022
DWG NO: JBA-21007-13
REV: B

LANDSCAPE PROGRAMMING
DUE TO NATIONAL PLANT SHORTAGE, PLANTS MAY TAKE UP TO 4 WEEKS TO BE DELIVERED. EARLY LEAD-IN FOR SOFT LANDSCAPE IS ESSENTIAL.

Table with columns for client, site, purpose, date, scale, and revision.

JAMES BLAKE ASSOCIATES

Head Office: 34-52 Out Westgate, Bury St Edmunds, Suffolk, IP33 3PA Tel: (01284) 335797