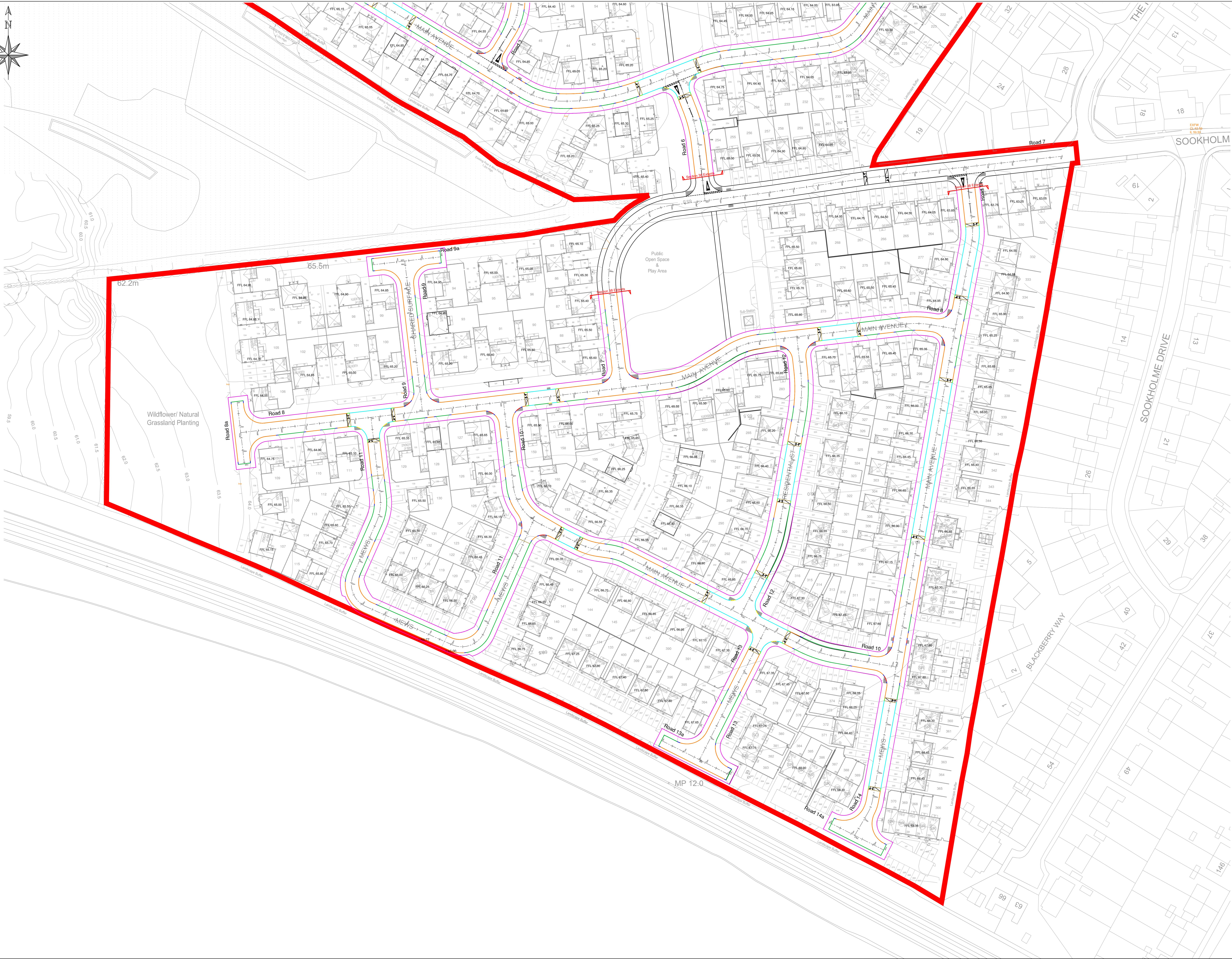


**GENERAL NOTES**

1. Do not scale this drawing. If in doubt, ask.
2. This drawing is to be read in conjunction with all other relevant Drawings, Abstracts and specialist design drawings and details.
3. All dimensions are in metres unless noted otherwise. All levels are in metres unless noted otherwise.
4. Any discrepancies noted on site are to be reported to the Engineer immediately.
5. All levels are subject to detailed design and may vary by +/-500mm.

**KEY**

- 250x125mm Half battered kerb - 125mm Upstand
- 250x125mm BN kerb
- H&B to BN Taper Kerb
- H&B to BN Transition Kerb
- 125mm BN - 255mm BN Taper Kerb
- 125x150mm Bullnose kerb - 25mm Upstand Vehicular Crossing
- 125x150mm Bullnose kerb - 6mm for Pedestrian crossing
- 150x50mm EF Footway Edging
- 125x255mm Channel Block



SOOKHOLM

SOOKHOLME DRIVE

BLACKBERRY WAY

Wildflower/ Natural Grassland Planting

Public Open Space & Play Area

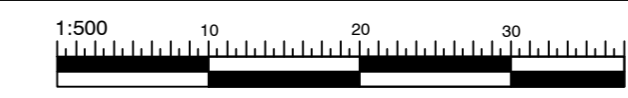
MP 12-0

62.2m

65.5m

WARNING TO PURCHASERS, Property Misdescriptions Act 1991

Rev	Description	Initial	Date	Rev	Description	Initial	Date
A	Levels of turning heads adjusted, plot levels altered	MJA	26.02.21	E	Minor changes to suit layout Rev F	JZ	08.12.21
B	Revised to suit NCC comments - added PED crossings on Road 1, 8, 14	JZ	25.05.21	F	Updated to status approved for use AFU	JZ	07.01.22
C	Revised to suit NCC comments - Updated layout to Rev J	JZ	28.09.21				
D	Updated layout to Rev N - Channel Block added	JZ	10.11.21				



**KERBING PLAN SHEET 2**



DAVID WILSON HOMES  
WHERE QUALITY LIVES

Drawn by: MJA  
Checked by: NMF  
Scale: 1:500 @ A0  
Date: 12.02.21

North Midlands  
Design & Technical Department  
2 Horizon Place, Nottingham Business Park  
NOTTINGHAM NG8 6PY

STONEBRIDGE