

Slate.





A familiar material across the UK's rural and industrial landscape, slate has been used for roofing since time immemorial. People welcome this most iconic of natural materials into both commercial developments and residential buildings across the UK. Here are some reasons why:

7 great reasons to choose slate...

GENERAL DESIGN POTENTIAL

Slate is a flexible material and can usually be tailored to fit with your design requirements.

Whether you need a large size, a thicker slate or a combination of colours on one design all of this can be catered for.

It also can be used (subject to a technical appraisal from us) on low pitched applications down to 17.5°, as well as being particularly suitable on complex pitched roofs.

SLATE IS SUITABLE FOR MODERN ARCHITECTURE

Slate is versatile. It can be split at 3mm, and so can achieve a uniform, sleek look.

The only limiting factor to your project's design with slate is your imagination.

SLATE ADDS VALUE TO STRUCTURES

The value of your building is influenced by the materials you use in its construction.

As slate is classified as a high value material, specifying natural slate is likely to increase the value of the building vis-a-vis other roofing materials.

LASTS A LIFETIME

Given slate's durability (tests prove that premium slate lasts a minimum of 75 years), it's one of those products you specify once and never again.

ENVIRONMENTALLY FRIENDLY

Given the longevity of slate, and the absence of machine-intensive production techniques, slate is a green material.

UNFADING OVER ITS LIFESPAN

The mineral content of slate is such that good quality slate does not change colour, fade or deteriorate over time.

This is one of the main reasons planning authorities choose slate ahead of other roofing options.

LOW MAINTENANCE

Once installed, minimal maintenance will be required over the roof's lifespan.





ABOUT US

Ever since 1980, we've been dedicated to providing natural slate solutions to the building and construction industry.

Over this time we have formed exclusive long-term partnerships with some of the world's finest slate quarries in Spain and South America, enabling us to offer slate that rivals the best from any quarry, anywhere in the world.

We have several representative offices near the quarry locations to ensure a full audit and control of our supply chain from quarry to roof.

8 reasons to choose SSQ for slate...

WE ONLY DO SLATE

The vision of our company is to specialise in one product – slate. You will never find us offering other materials, as we refuse to risk compromising our dedication to nature's finest product.

QUALITY CONTROL

We employ quality controllers at source to ensure a high standard of delivered material. As slate is a natural product, this is particularly important in our industry.

RANGE

Given the plethora of options available in the market, understanding the different grades and products can be a minefield. We go out of our way to standardise our product range so that your eventual choice is an informed one.

TESTING

We believe in testing and this is reflected in us going out of our way to ensure the products we offer comply with the leading international slate standards. Our slates are also tested frequently to ensure that any variations in quality are identified promptly.

TRACEABILITY

Our branded products have remained the same since 1980 and are traceable right back to source. We never use generic names or numbers to chop and change our offering to the market because of pressure from our suppliers.

REFERENCE LIST

Being the pioneers in the importation of natural slate, our reference list is the UK's most comprehensive. There is usually always a local reference to inspect before your specification.

GUARANTEES

Our guarantees are derived from the tests carried out on the slates as well as their track record of proven performance over the past 35 years.

Our best products are guaranteed to last for over 100 years, outlasting the life of the building they are installed on.

STOCK HOLDING

We hold an average of 3 million slates at strategic locations across the UK. When your project is ready to be roofed, we are likely to have the stock on the ground for prompt delivery.

“ SSQ's premium range of slate come with a lifetime guarantee and that was critical. Not only that, the on-site services promised – and delivered – by SSQ enabled a smooth and easy workflow. ”

KEITH HICKS, PAVE HALL ARCHITECTS





Project: Regency Gate
Location: Kingswood, Surrey
Product: Del Carmen, Blue Black, Ultra grade roofing slate
Coverage: 500m²



Creating an impression...

The more illustrious the building, the more complimentary slate becomes to its surroundings. What's more, because of slate's longevity (and the fact it adds value to structures), your investment is sound for generations to come.



“Banner Homes developments always have quality and durability at their heart, no matter where the location. We deliver high specification houses that are designed to last for a millennium but don't compromise on looks. Del Carmen was chosen because it fits in with this philosophy.”

MATT JACKSON, GROUP ARCHITECTURAL DIRECTOR OF BANNER HOMES



Del Carmen Ultra, Private House, UK



Del Carmen Ultra, St. Georges Church, UK



Project: Moultsford Preparatory School's sports hall

Location: Moultsford, Oxfordshire

Product: Domiz Blue Grey, Ultra grade roofing slate (600 x 300mm)

Coverage: approx. 16,000 slates/approx. 1200m²





“ We specified Domiz Blue Grey, Ultra grade roofing slate for both technical and aesthetic reasons: its strength and quality gives the performance needed and its cold, hard, colour provides a dramatic foil to the rich warmth of the western red cedar walls. ”

PROJECT ARCHITECT



Low pitch roofing solutions...

The strong Scandinavian influence behind this school's new sports hall is a world away from the more traditional red-brick/clay-tile design of the main building – the radical contrast between the two design philosophies making for a striking addition to the banks of the River Thames.

A feature of the multi-level roofs is the shallow, 20° pitch, limiting the choice of slate to those strong enough to withstand wind-lift, the inevitable noise associated with it and, of course, possible failure. Of those considered, Domiz Blue Grey roofing slate was chosen; its cold, hard, colour providing a dramatic foil to the rich warmth of the western red cedar walls.



↑ SSQ Del Carmen Ultra, Istanbul

A complex, low-pitch, multi-slope roof crowns a luxury mansion set in the hills outside Istanbul overlooking the Bosphorus.

The owner, wanting a natural material that would be in harmony with its setting. The result is an outstanding example of what an experienced roofing team can achieve given a great design and good quality roofing slates.



↑ Madrassa School and Mosque, Yorkshire

One of the UK's largest low pitch slate roofs completed in the late 90s. A pioneering project for this type of pitch (17.5°) using both a nail and hook fixing technique to ensure water tightness and long term performance.

Random diminishing courses...

The National Maritime Museum, Cornwall, makes a striking impression from its historic waterfront location in Falmouth. The most outstanding feature is the spectacular rhomboid-shaped roof. An ambitious architectural statement, the roof features a dramatic false perspective achieved by arranging different sizes of slate in diminishing courses.

This complex project was achieved using a total of 14 different sizes of slate with lengths ranging from 350mm x 500mm and widths from 200mm to 375mm. In addition, 8 different batten gauges were used and 9 different hole positions.

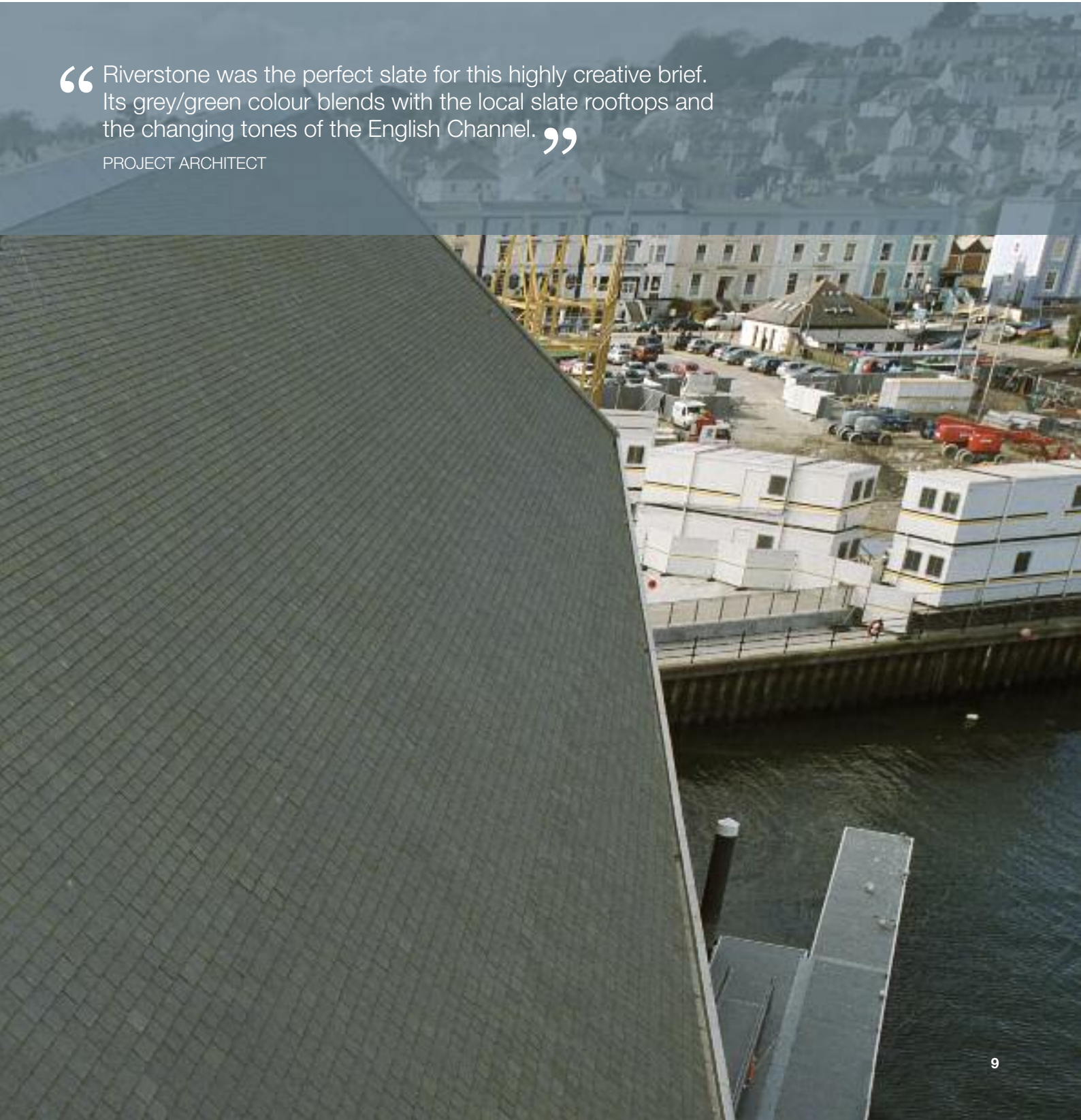
Project:	National Maritime Museum
Location:	Cornwall
Product:	Riverstone Grey, Ultra grade roofing slate
Scope:	approx. 50,000 roofing slates





“ Riverstone was the perfect slate for this highly creative brief. Its grey/green colour blends with the local slate rooftops and the changing tones of the English Channel. ”

PROJECT ARCHITECT



Curved and conical roofs...

Slate's versatility allows it to be shaped on site so that roof designs that are complex are achievable.

It's a stand out reason to consider using natural slate ahead of other roofing materials.



↑ Riverstone Ultra, Woodside Green Christian Centre

A charitable trust's children's home provides an outstanding example of how imagination can use the versatility of natural roofing slate.

Various roofs provide a slatescape that showcases what can be done – shallow-pitch (22.5°), multi-valley roof tops the apartment block and an octagonal roof with a similar pitch sits above the main entrance foyer. The conical roof on the church is simply breathtaking. With a diameter of 19m, a pitch of 25° and an arc of 270°, it's covered with hook-fixed roofing slates laid in a diminishing-course pattern.

The remaining segment of the circle thrusts out of the cone, soaring upward to form the church's tower, the glazing in its 'cut' faces allowing light to flood into the church below. Behind this, the tower's roof takes the shape of an inverted kite with a central ridge forming a spine that runs from the tip of the tower down to the rear of the church.

↑ Del Carmen Ultra, Stanwick Lake

Located in a Site of Special Scientific Interest managed by Rockingham Forest Trust, and designed by Laurie Wood Architects, the construction of the park's stunning visitor centre embraces the key principles of environmental sustainability and is designed to be low energy and carbon neutral.

The concave form meant the verges were different lengths and diverging – so a variety of different slate widths were required. Careful planning, accurate setting out and hook fixing were essential to the successful result.



Project: Luxury Apartments Elvestone

Location: Budleigh Salterton, Devon

Product: Riverstone Grey, Ultra grade roofing slate (400 x 250mm)

Coverage: 45,000 slates

“ Working in a conservation area brings a special responsibility. Riverstone slate fits perfectly because of its versatility, its tone and texture blending seamlessly with its surroundings. ”

JANE KINANE, ARCHITECT





Project: A prestige development of bespoke luxury homes designed for country living

Location: Dundurn Walk, St Fillans, Perthshire

Product: Riverstone Grey, Ultra Heavy grade roofing slate (400mm x 300mm)

Coverage: approx. 67,000 slates



Consistency of supply...



In this featured project, the main demand from the architect was for the same material to be used on the various phases of the project.

Riverstone met this demand with 750,000 slates being supplied over the 6 month contract period.

These slates were of the same size and selection ensuring uniformity of the village's roofing landscape.





Project: Dundee Royal Infirmary

Location: Dundee

Product: Riverstone Grey, Ultra Heavy grade roofing slate
(400 x 250mm, 450 x 250mm, 500 x 250mm)

Coverage: 3,500m²

Replacing old with new...



Riverstone phyllite slate offered a welcome solution to the conundrum facing specifiers faced with the daunting task of replacing several hundred year old English Delabole slates on an historic 'Category A' building in the heart of Dundee.



“ The material specified proved to be a very suitable alternative to the original – now unavailable – stone, and worked well in creating contrast with the nearby clay materials. ”

WILLIAM BRAISBY, BRAISBY ROOFING

→ Christ College, Brecon, Wales

Despite being in the heart of south Wales, it was found that many of the buildings were roofed with Cornish Delabole slate rather than Welsh slate. The scale of the project, and on such historically important buildings, meant that an economically viable supply of consistently high-quality roofing slate was needed on a long-term basis.

Cadw and the Brecon Beacons National Park Authority considered the use of Riverstone Grey roofing slate on the basis of quality, consistency, surety of supply, cost and appearance – and approved it.

Project:	Restoration of the college's roofs
Location:	Christ College, Brecon, Wales
Product:	SSQ Ultra Riverstone® Grey roofing slate
Coverage:	750m ²



Heritage roofs...

Opened in 1927, the HH Wills Physics Laboratory was built as a tribute to HO Wills, head of the Wills tobacco empire, founder of the university and its first chancellor.

The grade II-listed building recently benefited from a restoration project that has rejuvenated its exterior. The original, very old, possibly reclaimed, Cornish Delabole slates were in poor condition with more than half being unsalvageable; 'blown' from water penetration.

Project: Refurbishment of the University of Bristol's HH Wills physics laboratory roof

Location: Bristol, Avon

Product: Riverstone Grey, Random specification roofing slate

Coverage: approx. 600m²





SSQ slate, Germany



Sarria Ultra grade, Luton Hoo, UK

“ The project team considered a number of alternatives before choosing Riverstone roofing slate – it was very similar in colour to the original slate, was within our budget and readily available. Camilleri stripped the roof back to the frame, replaced the battens and underlay and faithfully recreated the attractive random width, diminishing course effect of the original. We’re all delighted with the result. ”

KEVIN O’FLAHERTY, THE UNIVERSITY’S CAPITAL PROJECTS OFFICER



Vertical slating...

Slate in the UK is renowned for roofing applications.

Less known about its versatility and fitness for purpose as a highly effective vertical cladding solution. Below are a few projects which highlight this application and provide the specifier with a cost effective cladding solution.



← Del Carmen Ultra, Bath

Helping to achieve an unrivalled aesthetic whilst also meeting heritage requirements, Del Carmen Ultra slate was used at the Royal High School in Bath.

Due to strict conservation requirements, a roofing material was needed which would meet the council's planning standards. As a heritage accepted slate, Del Carmen Ultra was ideal, being commonly accepted as a viable alternative to indigenous slates.

Equally important was a need to ensure a uniform aesthetic appearance that would minimise the visual impact of the new building, particularly against the adjacent listed Victorian building. The consistent cleavage of the Del Carmen rock allowed this uniformity to be achieved.

Feilden Clegg Bradley Architects said: "Del Carmen Ultra slate offered a wide variety of benefits that made it incredibly well suited to this project – meeting planning requirements first and foremost."



Project: Commercial building

Location: Holland

Product: Rivestone Grey, Ultra grade roofing slate

Coverage: 1,200m² (approx. 16,000 slates)

“ Sizes 300 x 200mm in 7mm thickness were used to wrap around the building and create a green, natural, look to the building in keeping with the surrounding nature. ”

PROJECT ARCHITECT





Dimensional cladding...

An increasingly popular option is dimensional slate cladding - available in several machined and natural finishes. The beauty of this solution derives from the full geology of the rock mirroring itself on the exterior - with striking veins of quartz and mica crystals on full display.

When style is as important as functionality this option fits the bill.

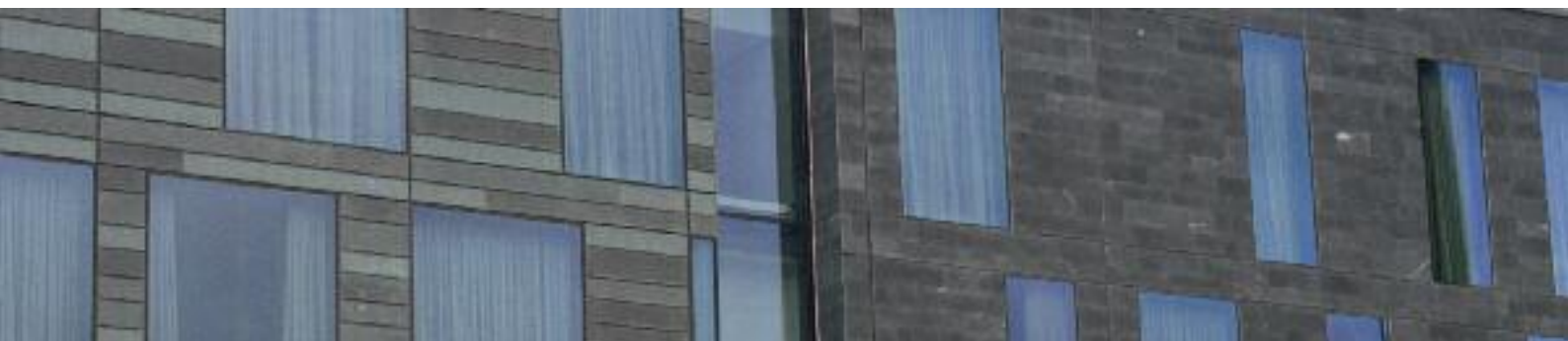
→ Riverstone, Sweden

This new building, containing 500 hotel rooms with a rooftop sun terrace and pool overlooking Gothenburg, is sure to become the most exciting meeting arena in the city.

This historic old Post Office building in heart of Gothenburg, originally designed in neo-classical style by famous architect Ernst Torulf, is now transformed to a stunning hotel.

The project stands out as a great example of modern architecture and owes its contemporary style to Riverstone, which is used in random sizes to complement the design of surrounding buildings. In fact, the architects decided to cover half of the façade with slate and the other half with copper - the same materials used in the original post office building.

Riverstone was specifically chosen by the architects for the external cladding due to its hard-wearing surface, which means there is virtually no need for maintenance, and its unique grey/green which conveys character to the project.





Project: Clarion Post Hotel

Location: Gothenburg, Sweden

Product: Riverstone architectural stone

Coverage: 900m²

“ Riverstone is both a beautiful and functional product solution. Highly recommended. ”

ERIK STENING,
SKANDINAVISKA GLASSYSTEM

Creative solutions...



↑ Eyebrows

Slate can be shaped to achieve 'eyebrows' around the dormers. This is the only roofing material that can achieve this effect because of its unique ability to be cut and shaped either on site or delivered to a particular specification.



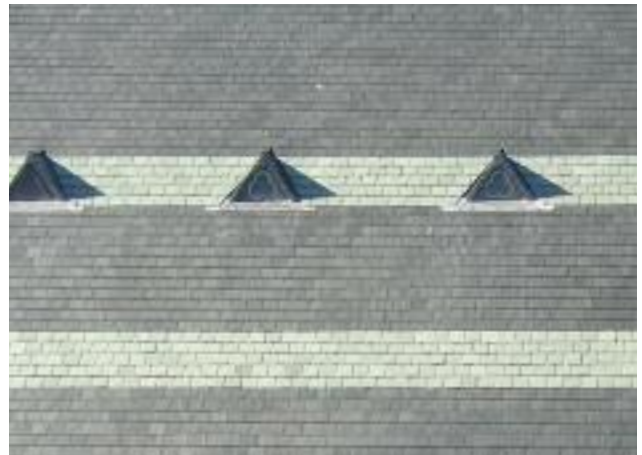
↑ Mitred Hips

Many slate roofs have closed or mitred hips that provide a design which prevents any discontinuity in the roof.



↑ Bespoke shapes

Every piece of slate can be cut into a different shape and this allows unorthodox designs to be realised.



↑ Colour combinations

Because of the relative uniformity of different slate seams, you can mix and match slates from different coloured quarries to achieve multi-coloured roofs.



Product swatches



Riverstone

Riverstone is the diamond of natural roofing slate. SSQ's signature slate, quarried in Argentina, is not actually slate, it is phyllite. Harder, denser and stronger than slate, phyllite is a perfect stone for any design challenge or artistic feature.



Del Carmen

An exclusive slate from the Del Carmen quarry in the Cabrera Mountains of North-West Spain – with its distinctive faintly-rippled riven texture, deep blue-black colour and characteristic grain, Del Carmen will crown your building in truly spectacular style.



Del Prado

For a stunning roof finish, look no further as Del Prado is the perfect choice for you. The natural minerals, glimmering in the sunlight, will make the roof a striking feature and will greatly enhance the design of your building.



Sarria

Sarria slate is mined especially for SSQ from a quarry in the Orense region of north-west Spain. This strong, flat and thin slate has a deep blue-black colour with a distinct blue tinge in sunlight, and is attractively speckled with inert mineral inclusions.



Montegris

Montegris slate is mined for SSQ at a quarry in north-west Spain. The slate is a mid-grey colour with a riven distinctive texture and is a good alternative to the slates found in Cornwall, Devon, Scotland and Wales.



Monteverde

Monteverde slate is mined for SSQ at a quarry in north-west Spain. The slate is a grey-green colour with a distinctive riven texture and is a good alternative to the slates found in Cornwall and Devon.



Matacoute

Matacoute Heavy has an astoundingly deep blue-black colour, it exhibits a naturally riven texture, and is unique to the quarry from where the slate takes its name. Cut from the finest Cabrera Mountains of North-West Spain, it is a favourite of Scottish architects as an alternative to indigenous Scottish stone.



Silverstone

Silverstone is a smooth textured slate approximately 4-5mm thick with sawn dressed edges. It has a very distinct appearance due to its grain and is attractively speckled with inert mineral inclusions.



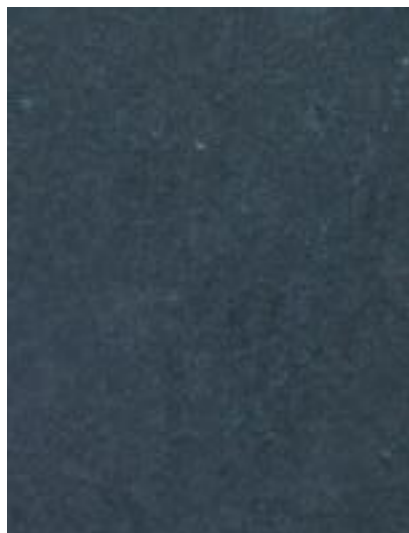
Domiz

If you are looking for a slightly greyer finish to your roof, Domiz is the perfect choice. Its rich blue-grey overtones, coupled with a deep, bold texture, give you a stunning finish every time. Domiz slate is Spain's closest equivalent to the now defunct Ffestiniog Welsh quarry.



Canteverde

Canteverde is a grey-green roofing slate. It is mined exclusively for SSQ in south-east Brazil. Geologically it is approximately 100 million younger than typical slate rock resulting in the material being brittle, therefore supplied unholed. Hook fixing method is recommended.



Amazonia

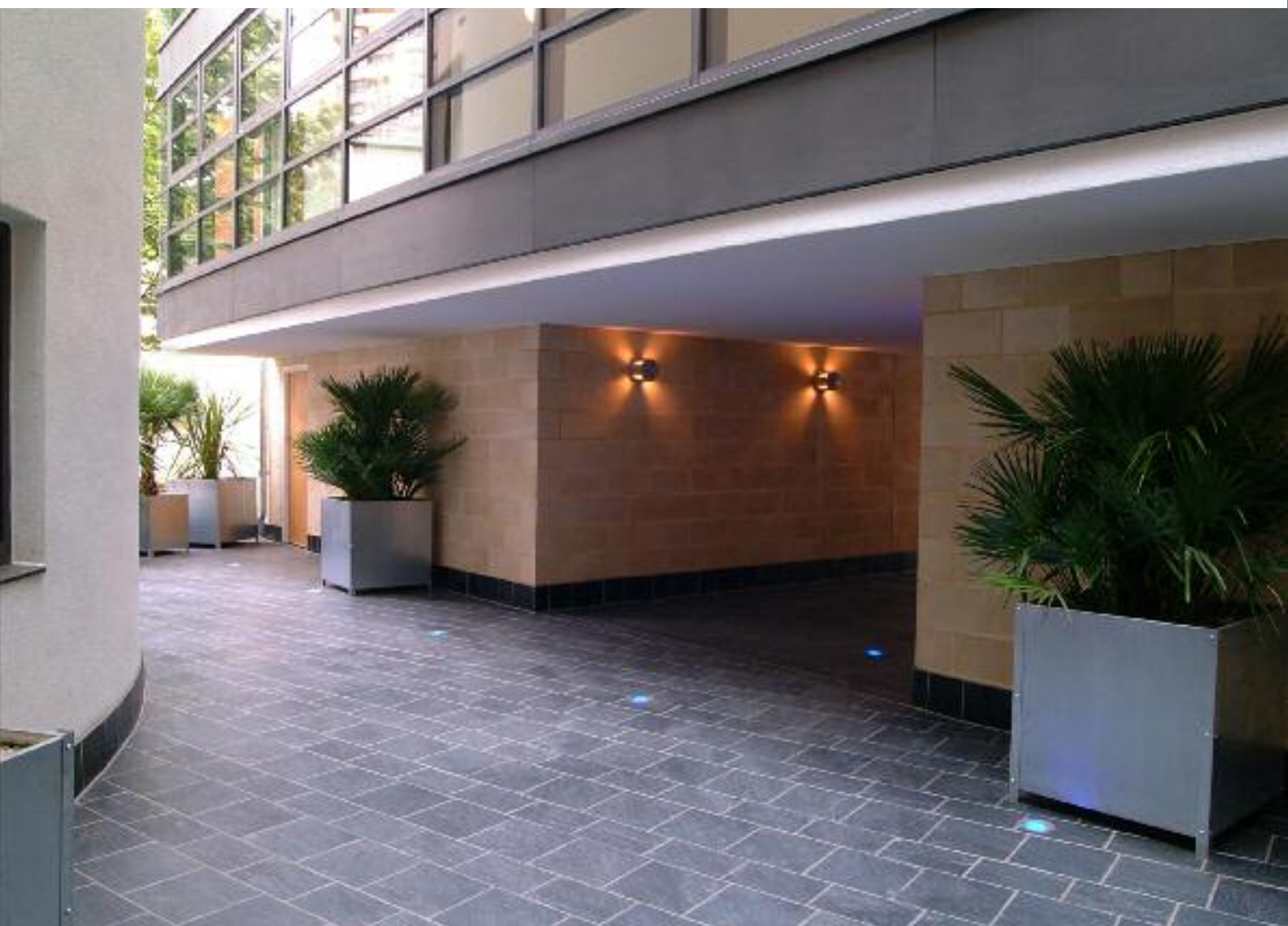
Amazonia is a mid-grey roofing slate with a tinge of dark green. It is mined exclusively for SSQ in south-east Brazil. Geologically it is approximately 100 million younger than typical slate rock resulting in the material being brittle. Hook fixing method is recommended.

We also do slate flooring...

The use of slate is not limited to roofing, and it has increased in popularity over the last few decades because of the stone's ability to be brushed and honed. It is also available in a riven finish maintaining its intrinsic look, whilst still being calibrated and gauged on its backside so that a smooth overall appearance can be achieved.

Case studies on natural slate flooring, as well as a downloadable brochure, can be found on our website:

www.ssqgroup.com/category/architectural-stone-case-studies



“ I’m so impressed with the quality and beauty of the stone. In particular, the mica content gives the stone a reflective characteristic not found with other stones I have been involved with before. I will definitely be specifying it on my more discerning projects going forward. ”

PROJECT ARCHITECT

Project: Luxury Homes

Location: Regent’s Street, London

Product: Riverstone architectural stone

Coverage: Approx. 700m²

Testing, services, guarantees

CE MARKING – A LEGAL REQUIREMENT

The CE marking is applied to many products sold or used within the European Economic Area as a declaration by the manufacturer that the product meets the requirements of any relevant European Directives.

Products used for building and construction work are covered by the European Construction Products Directive. This specifies that roofing slate must comply with a European Standard, EN 12326* and, if it does so, it qualifies for a CE marking.

In the UK, the Building Regulations specify that if a British or European Standard exists for a construction product, these standards must be complied with. As a result, only roofing slate tested to EN 12326 and, therefore, carrying a CE marking can be used.

* This European Standard has been adopted by the UK as a British Standard, BS EN 12326, and supersedes other British Standards relating to these products.

WHAT SSQ RECOMMEND

EN 12326 as described above ensures that all roofing slate sold throughout Europe is tested in the same way, using the same methodology, regardless of their origin.

However, the fact they've been tested and subsequently received a CE marking does not actually give an indication as to their relative quality or likely performance in use without *interpreting* the results of the EN 12326 tests.

Therefore, as a failsafe way to ensure a problem free slate roof over its lifespan, SSQ recommends compliance to NF 228 – the world's leading slate standard – which not only achieves legal compliance, but also ensures the slates will perform well, and outlast the life of the building.



YOUR TEAM SSQ

SSQ is one of the world's leading quarriers and suppliers of high-grade, unfading natural roofing slate. Our principal markets are in Europe and North America. Our exports are as far afield as Australia, Trinidad, Norway and Japan – in all, over 20 countries. Owners, architects and installers choose our slates for their:

- Exceptional colour stability
- Exceptional weather resistance (surpassing the strictest international standards)
- Suitability for significant historic and distinctive contemporary structures

SSQ's technical support team can help you achieve a range of effects on straight or curved surfaces, using standard or special shapes, random widths and/or graduated lengths. Our team is able to supply detailed sketches and advice, concerning specification, quantity takeoff, cost-comparison and overall strategy, to achieve an optimum installation.

SSQ also offers the industry's most comprehensive guarantees starting at 30 years up to 100 years depending on the type and grade of slate chosen.

Your team SSQ.

Note: Colours and textures have been rendered as accurately as possible; the photographic process and the nature of natural stone prevent exact representations. Being a natural product, slate's physical and chemical characteristics can vary.



SSQ Group, 301 Elveden Road, London NW10 7SS

Tel 020 8961 7725 Fax 020 8965 7013 Email info@ssq.co.uk www.ssqgroup.com