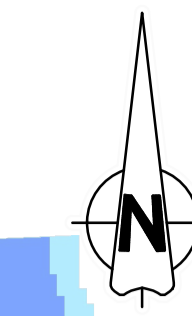


Appendix D

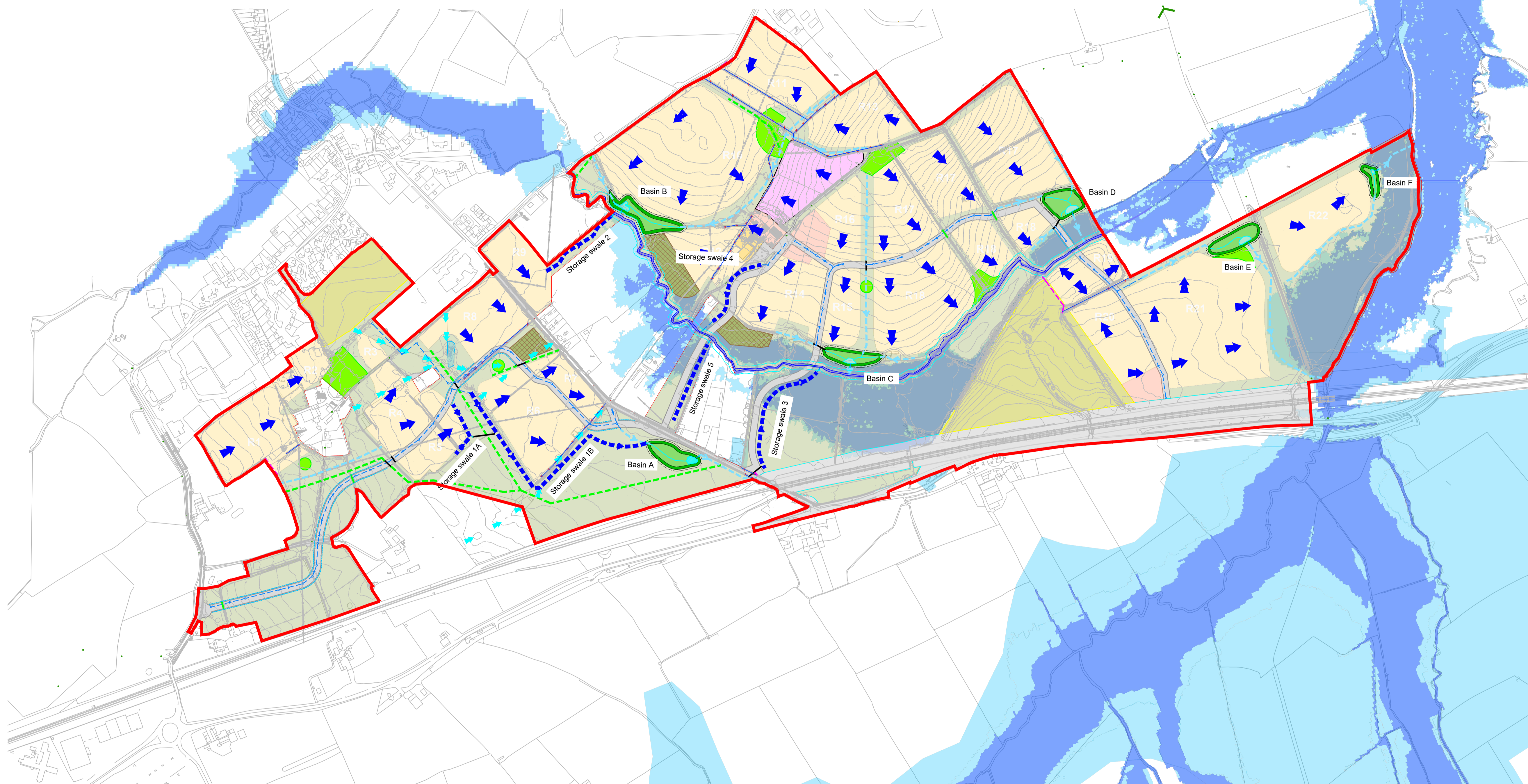


Construction Design and Management (CDM)
Key Residual Risks
 Contractors entering the site should gain permission from the relevant land owners and/or principle contractor working on site at the time of entry. Contractors shall be responsible for carrying out their own risk assessments and for liaising with the relevant services companies and authorities. Listed below are Site Specific key risks associated with the project.

- 1) Overhead and underground services
- 2) Street Lighting Cables
- 3) Working adjacent to water courses and flood plain
- 4) Soft ground conditions
- 5) Working adjacent to live highways and railway line
- 6) Unchartered services
- 7) Existing buildings with potential asbestos hazards

- NOTES:**
1. Do not scale from this drawing.
 2. All dimensions are in metres unless otherwise stated.
 3. Brookbanks Consulting Ltd has prepared this drawing for the sole use of the client. The drawing may not be relied upon by any other party without the express agreement of the client and Brookbanks Consulting Ltd. Where any data supplied by the client or from other sources has been used, it has been assumed that the information is correct. No responsibility can be accepted by Brookbanks Consulting Ltd for inaccuracies in the data supplied by any other party. The drawing has been produced based on the assumption that all relevant information has been supplied by those bodies from whom it was requested.
 4. No part of this drawing may be copied or duplicated without the express permission of Brookbanks Consulting Ltd.

- KEY:**
- Planning Boundary
 - Surface water sewer and manhole
 - Swale Pipe Connection
 - Conveyance swale
 - Storage swale
 - Shallow Roadside Swale (on undeveloped frontages)
 - Land drainage exceedance channel
 - Detention basin with 3.5m maintenance zone
 - Watercourse with 8m buffer zone
 - Flow direction
 - Flood Extents
 - Ditch to be abandoned
 - Diverted ditch
 - Culvert to existing ditch
 - Overland surface water flow route
 - Surface Water flow control
-
- Residential
 - Retained Development
 - Mixed Use Centre
 - Primary School



A Drainage layout amended CDW NJO SM 21.01.22
 First Issue HG NJO SM 12.01.22

BROOKBANKS

6150 Knights Court, Solihull Parkway, Birmingham, B37 7WY
 T +44 (0)203 958 5400 E mail@brookbanks.com
 W brookbanks.com

Swindon EDA Consortium

Proposed Development
 Swindon EV Phase 1

Flood Risk Plan

| Status | Status Date | |
|--------|-------------|----------|
| Draft | Nov. 2021 | |
| Drawn | Checked | Date |
| HG | NJO | 03.11.21 |
| Scale | Number | Rev |
| 1:5000 | 1335-SK-111 | A |

UNTIL TECHNICAL APPROVAL HAS BEEN OBTAINED FROM THE RELEVANT LOCAL AUTHORITIES, IT SHOULD BE UNDERSTOOD THAT ALL DRAWINGS ARE ISSUED AS PRELIMINARY AND NOT FOR CONSTRUCTION. SHOULD THE CONTRACTOR COMMENCE SITE WORK PRIOR TO APPROVAL BEING GIVEN, IT IS ENTIRELY AT HIS OWN RISK.