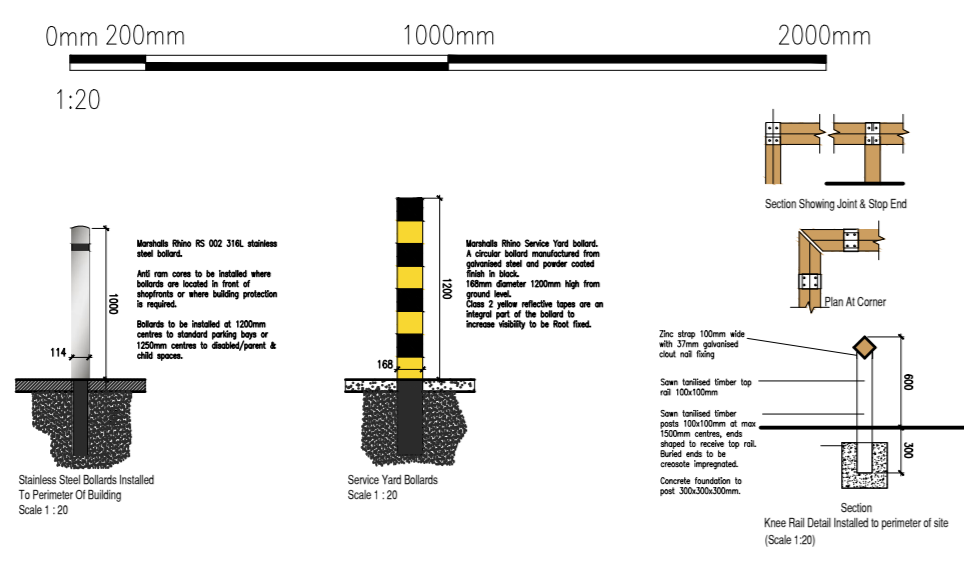


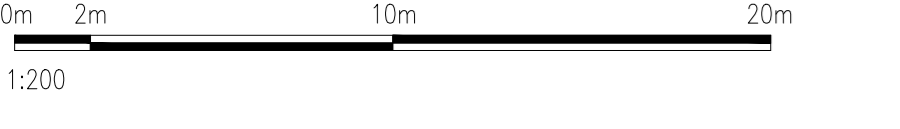
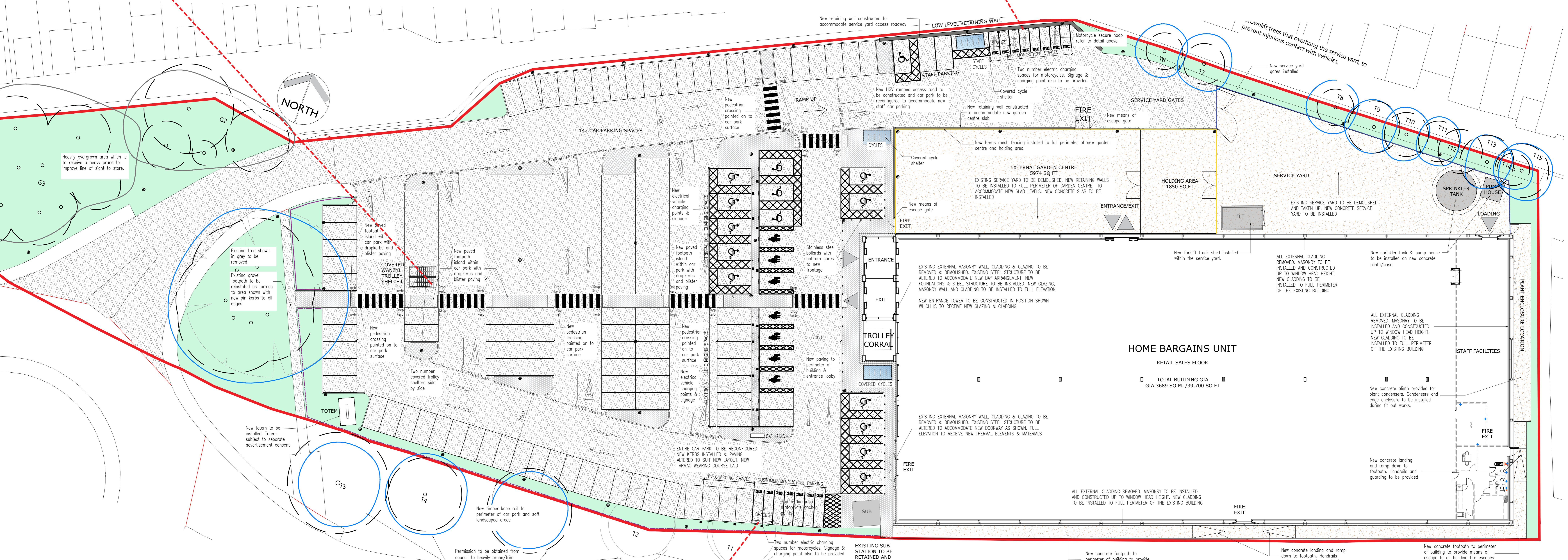
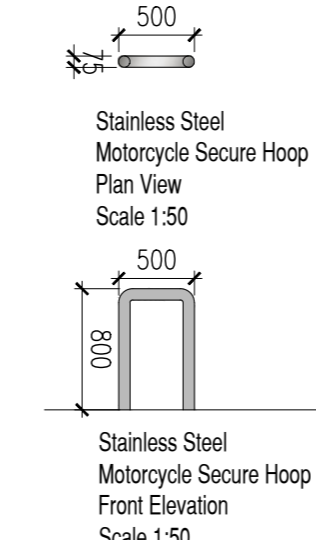
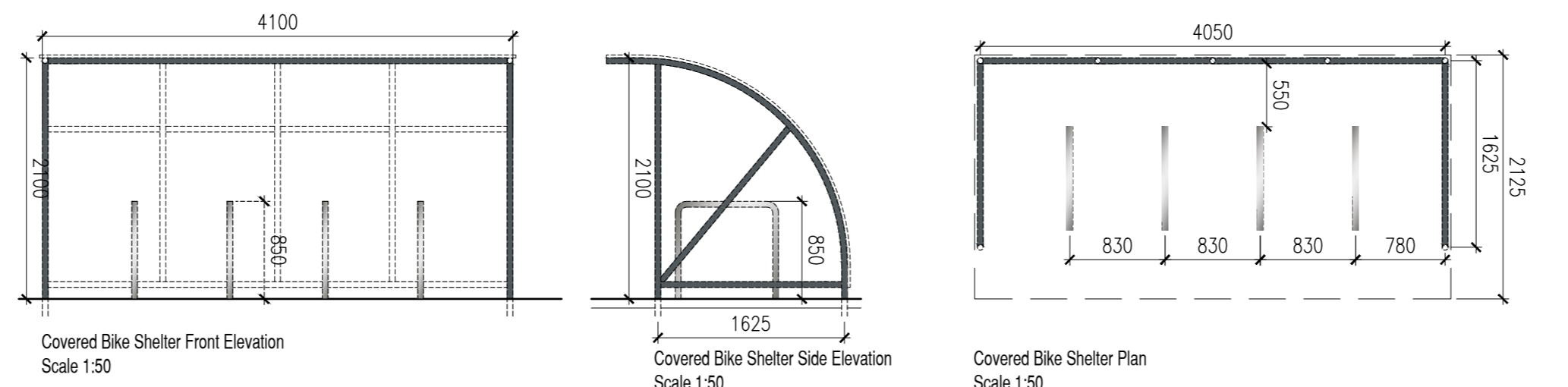


Wanzyl Covered Trolley Shelter Detail



Galvanised steel frame with perspex roof and base manufactured from 4mm PETG Perspex. The cycle with Perspex and panels. Powder Coated in Colour Grey RAL 7011 & Fitted with adjustable feet for easy on-site positioning and leveling.

4 number stainless steel sheilded cycle hoops to ground in underground & to extend approx. 250mm length below ground level. Cycle hoops are to be polished stainless steel.



schedule of Accommodation

building G.I.A.	= 3689sq m / 39,700sq ft
building G.E.A.	= 3924sq m / 42,247sq ft
Total Standard	= 120 spaces
Total Disabled	= 15 spaces
Total Parent and Child	= 7 Spaces
Electrical Vehicle Charging Disabled	= 8 Spaces
Parent & Child	= 7 Spaces
Standard Spaces	= 9 Spaces
Motorcycle spaces = 7 Customer (inc 2 EV spaces) & 7 Staff (inc 2 EV spaces)	
Total Car Parking	= 142 spaces

RAWING KEY

- 1p New lighting standard type, height and lighting to be advised by specialist
- New brushed anti-rain road stainless steel bollard 900mm high
- ED Electrical duct & draw wire
- Site boundary

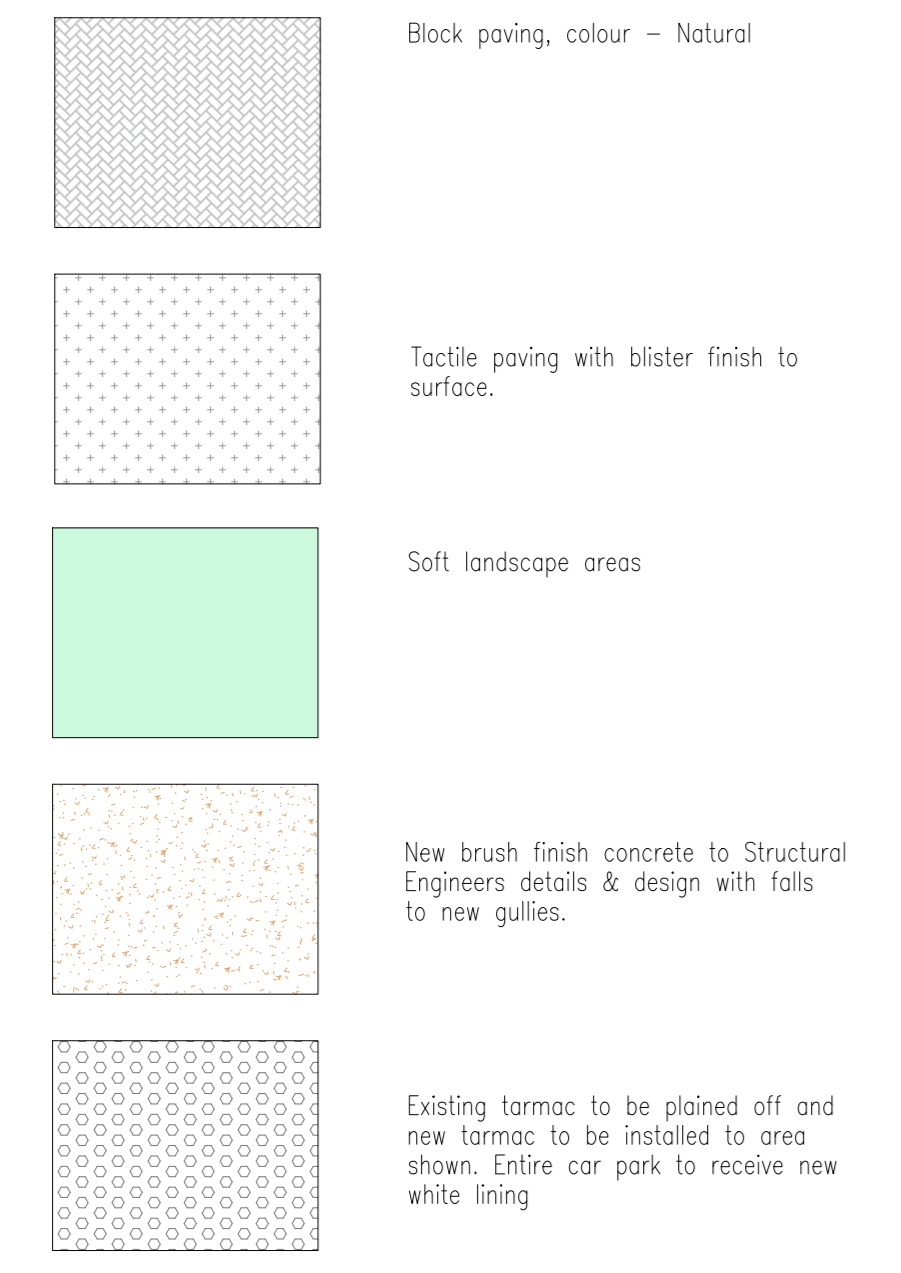
External surfaces are to fall away from building at approximate 1:50 generally - (this gradient not to be exceeded)

- Secure heras zenith - 358 weld mesh panels fence - 4.2m high
- Secure heras zenith - 358 weld mesh panels fence - 3m high
- New timber knee rail

For all landscaping works including trimming of vegetation and removal of trees refer to specialist tree report and information.

New exterior lighting to site to be designed by specialist to give correct lighting levels.

External surfaces are to fall away from building at approximate 1:50 generally - (this gradient not to be exceeded)



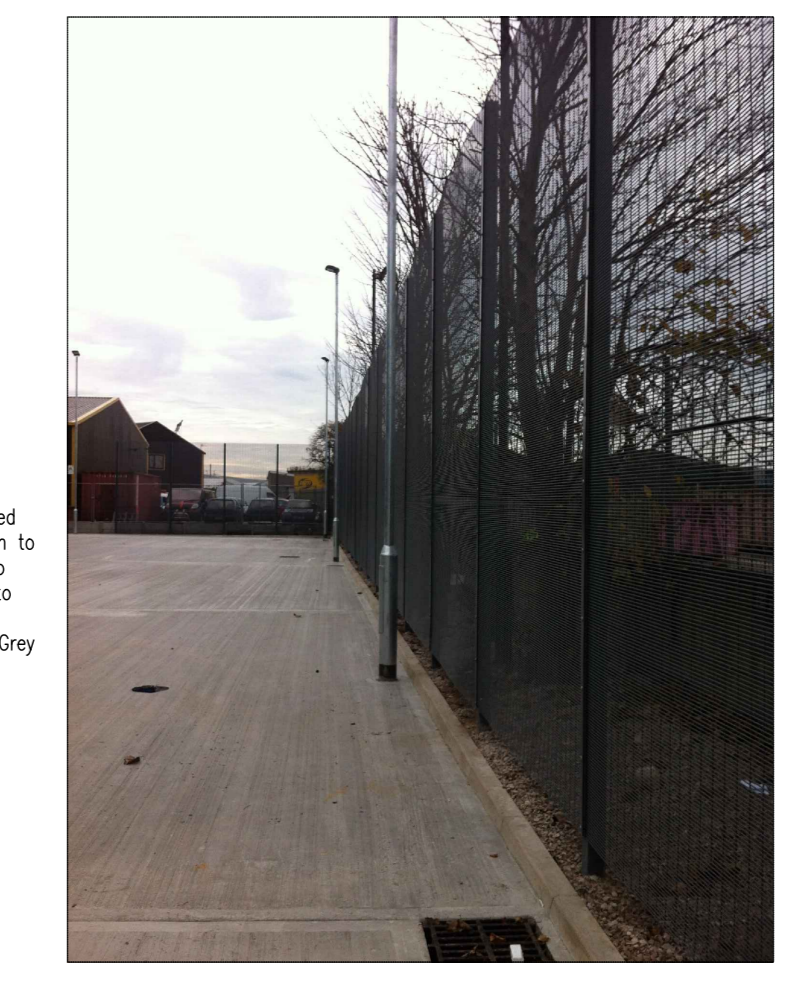
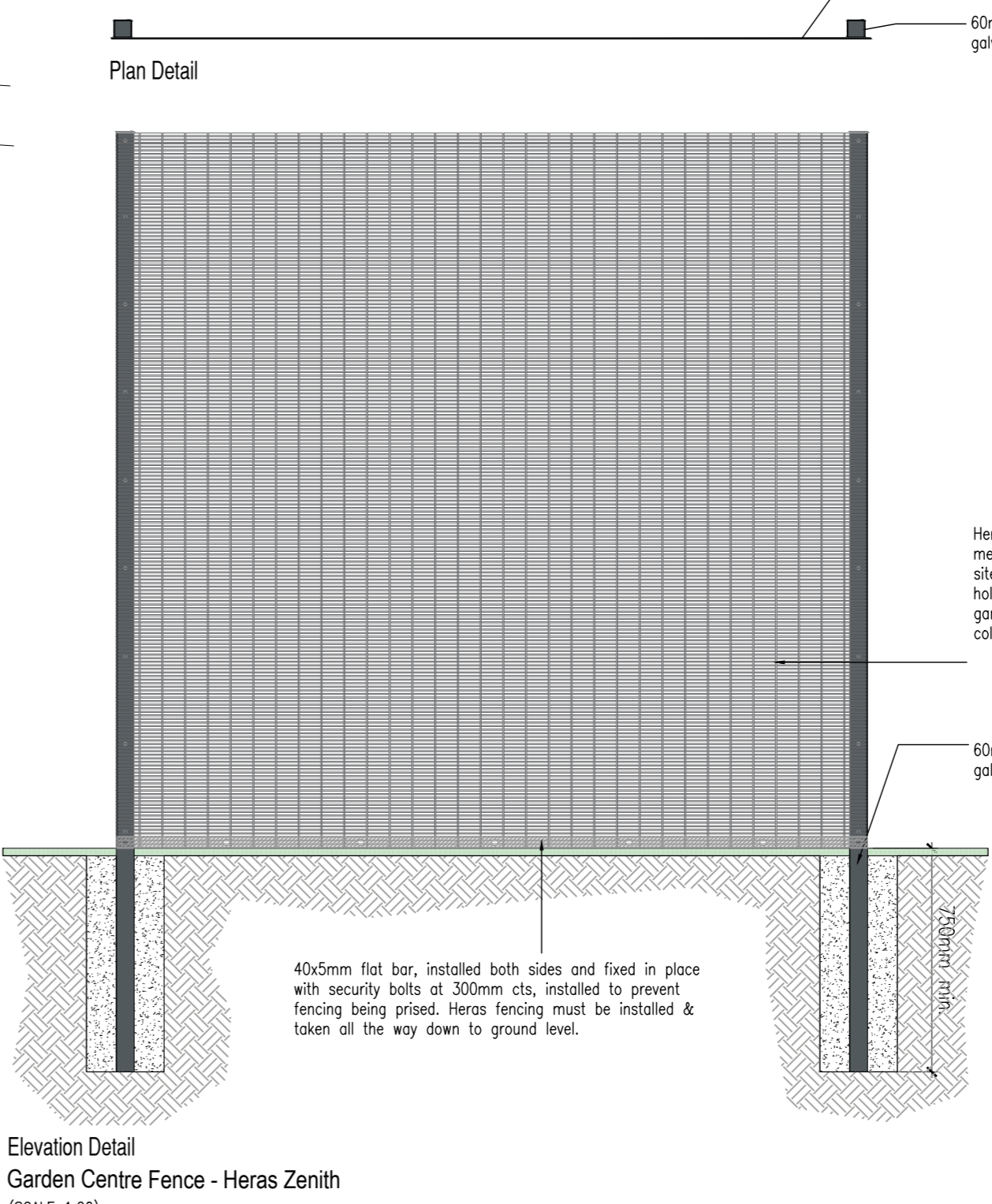
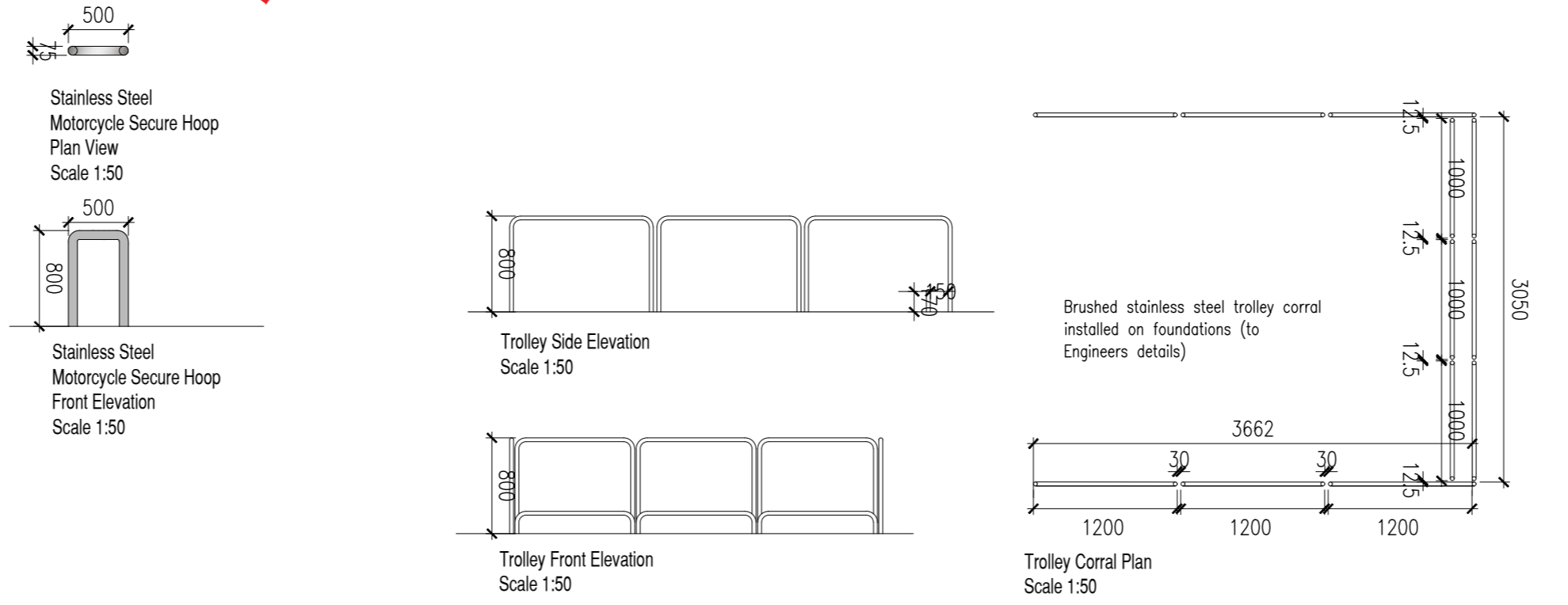
Block paving, colour - Natural

Tactile paving with blister finish to surface.

Soft landscape areas

New brush finish concrete to Structural Engineers details & design with falls to new gullies.

Existing tarmac to be plained off and new tarmac to be installed to area shown. Entire car park to receive new white lining



Proposed Site Plan

WPL Consulting LLP
1 Airport West, Lancaster Way, Leeds LS19 7ZZA
Tel: 0113 202 9444 Fax: 0113 202 9333
E-mail: mail@wplconsulting.co.uk

PROJECT TITLE
Refurbishment Of Existing Retail Unit
Great Western Way
Swindon
SN2 1US
For Home Bargains

DRAWING TITLE
Proposed Site Plan

PROJECT No:	DRAWING No:	REVISION:
0288	104	X
SCALE:	DATE:	DRAWN BY:
1:100 @ A0	Aug 20	TR
CHECKED BY:	DATE:	

V	15.02.21	Final revision - new retaining wall to ground level behind building
V	08.10.21	Additional motorcycle spaces shown in staff area of report of Colwell
S	05.10.21	Additional cycle storage shown, one motor additional disabled space shown
T	05.10.21	Motorcycle secure stainless steel fence hoops shown
R	16.09.21	Total EV charging spaces increased to 15
R	16.09.21	2 number EV charging spaces for staff fitted
D	16.09.21	Disabled parking spaces increased to size to 3.5m x 5m in size
F	16.09.21	Car park paving to north shown as covered. Car park layout amended to include additional EV charging requirements as requested by Highways
N	12.09.21	Final revision - new retaining wall to ground level behind building
M	11.09.21	Handing area reduced in width in report of planning consultant
K	28.07.21	EV charging covered to retain area on drawing
X	28.07.21	Car park layout amended with concrete received from planning dept
H	07.05.21	Additional cycle storage shown
H	07.05.21	Additional cycle storage shown
I	23.04.21	Parent & Child spaces increased adjacent to store
I	23.04.21	Car park reworked. 100 spaces increased. Entrance tower relocated. garden centre extended. loading area reduced in size.
E	09.12.20	Handing area reduced in width in report of planning consultant
D	07.12.20	Taken into account. Trees added from tree survey
C	18.09.20	Handing area in garden centre shown. Space in store relocated. sprinker tank & pump house reworked
B	18.09.20	Taken into account. Trees added from tree survey
A	02.09.20	Additional cycle storage shown
REV.	DATE	AMENDMENT