

astley.

Delivering creative brand environments
through signage, print and digital solutions



Client:
Co-op

Full Address:
Moor Road, Chorley

FIM:

Amendments

Rev A - Totem amended.
Rev B - CFN Updated

Site:
Charley

Drg by:
PT

Drawing Ref:
G_79855

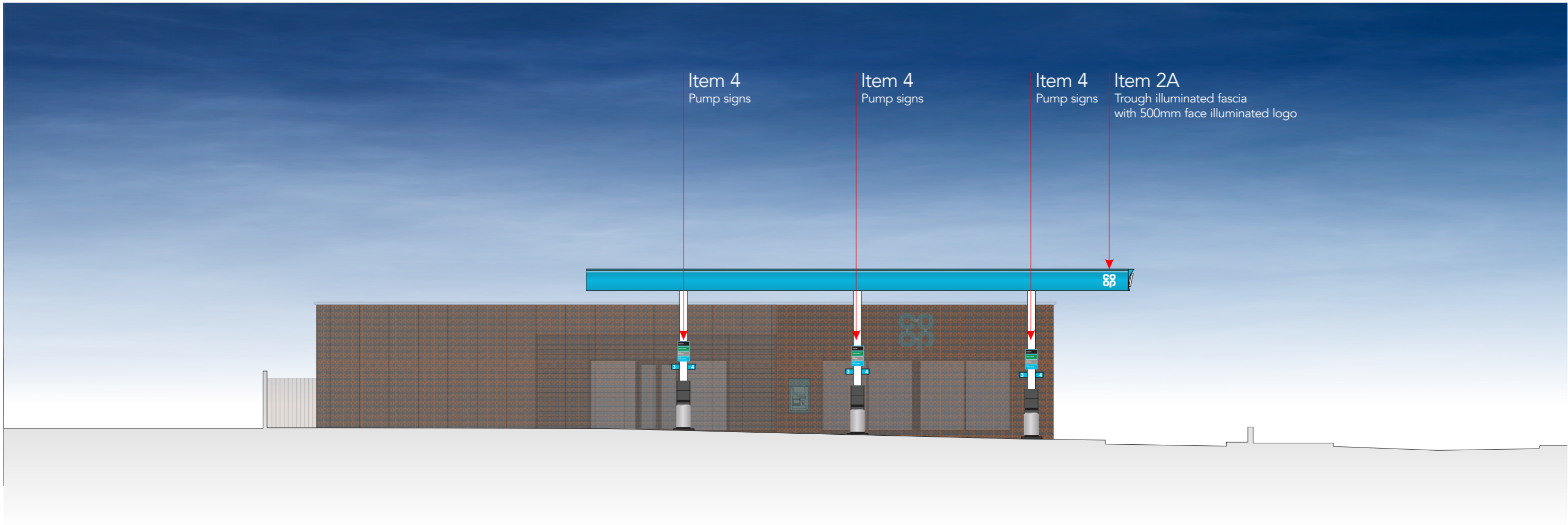
Date:
09.05.22

Visual Status:
FIM APPROVED

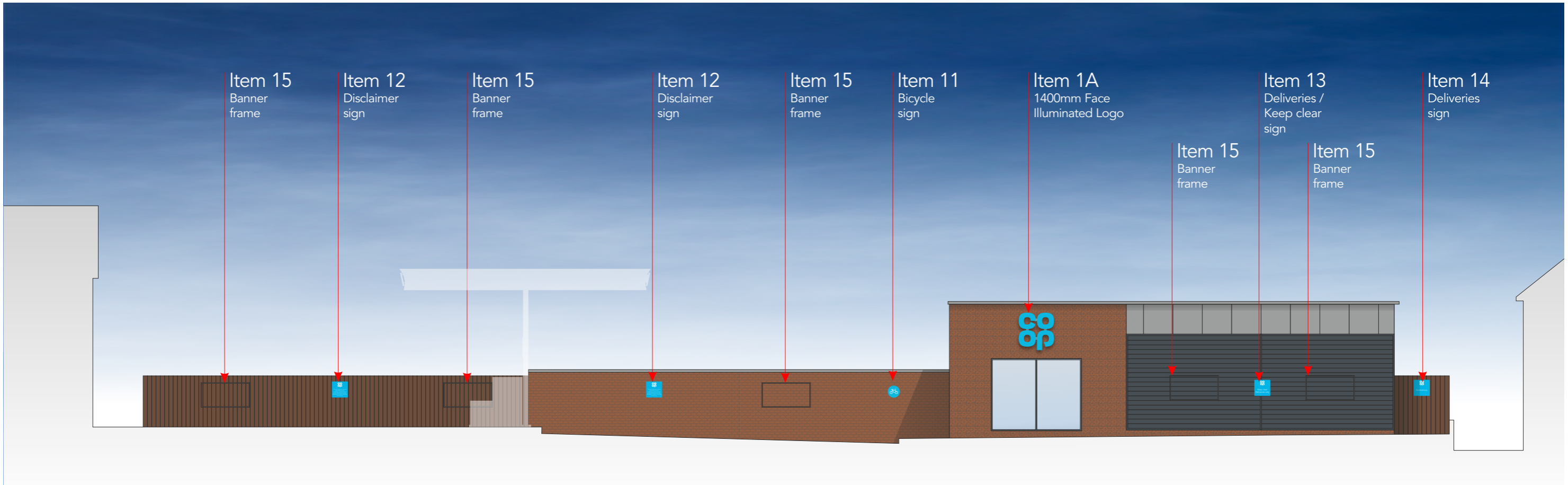
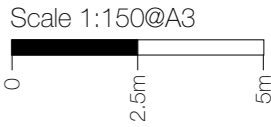
Proposed North East Elevation (Kiosk Signage)



Proposed North East Elevation (Canopy Signage)

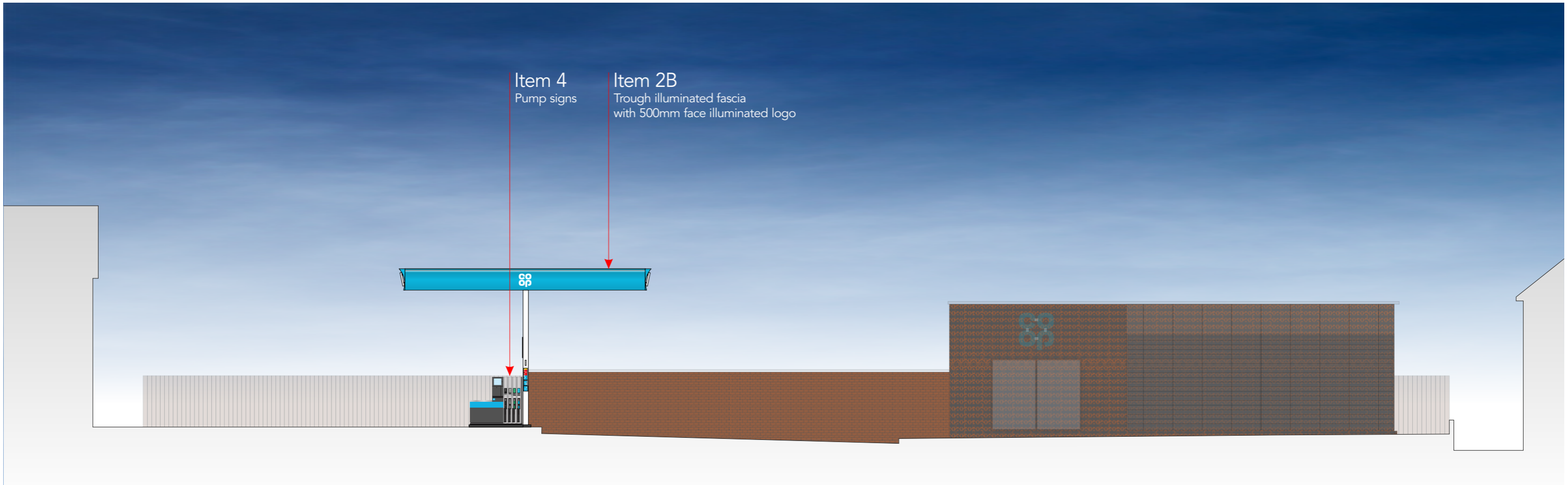


Proposed North West Elevation (Kiosk Signage)



Proposed North West Elevation (Canopy Signage)

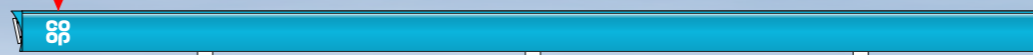
Scale 1:150@A3
0 2.5m 5m



Proposed South West Elevation

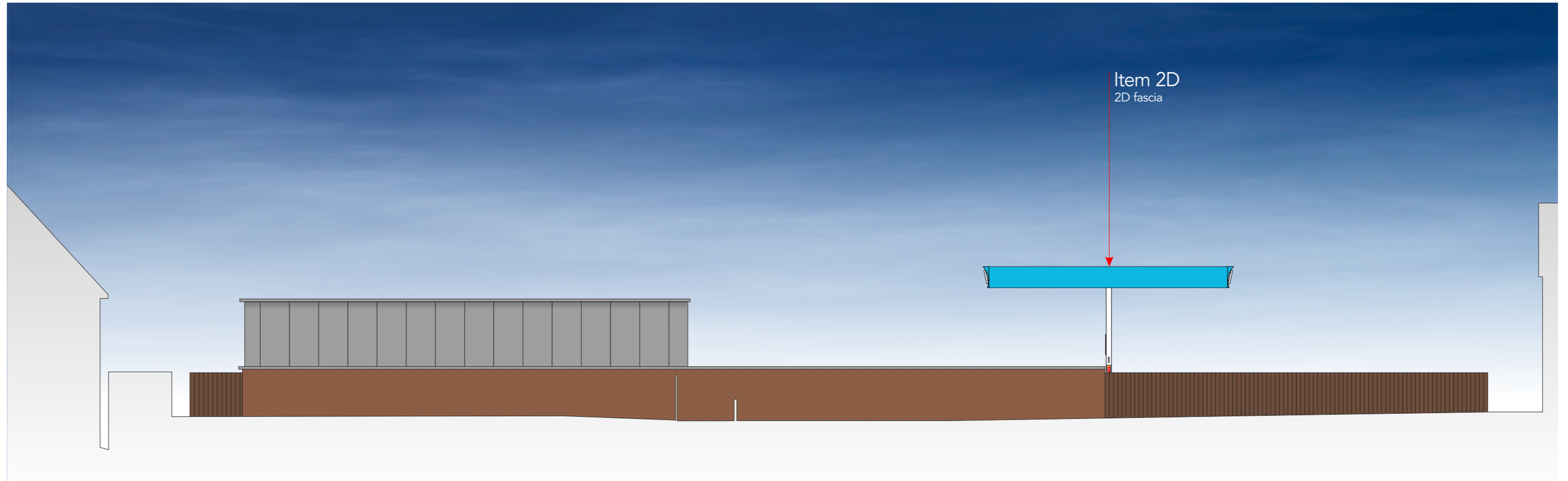


Item 2C
Trough illuminated fascia
with 500mm face illuminated logo

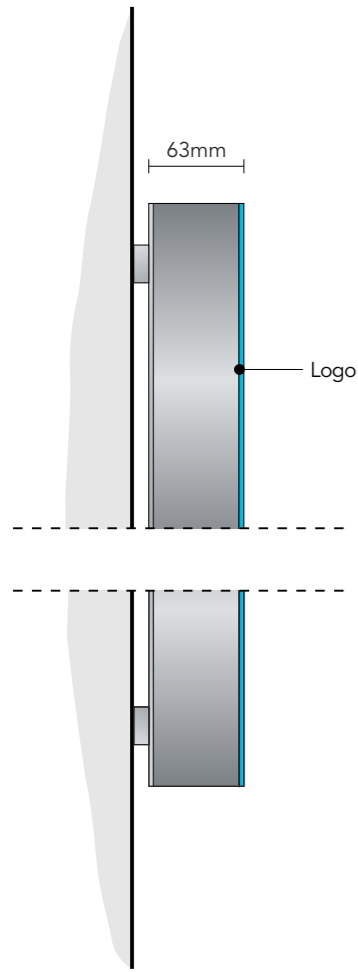


Proposed South East Elevation

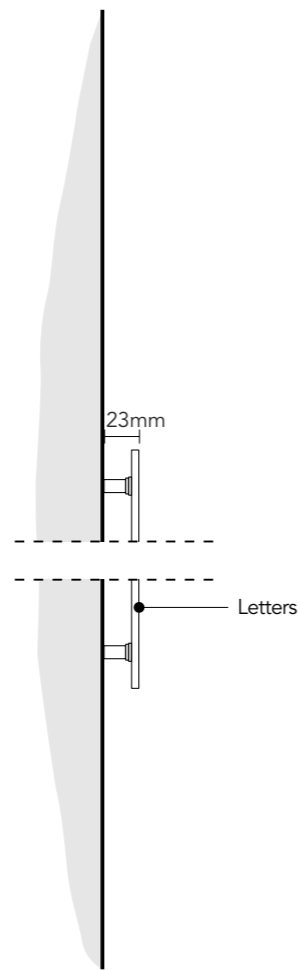
Scale 1:150@A3
0 2.5m 5m



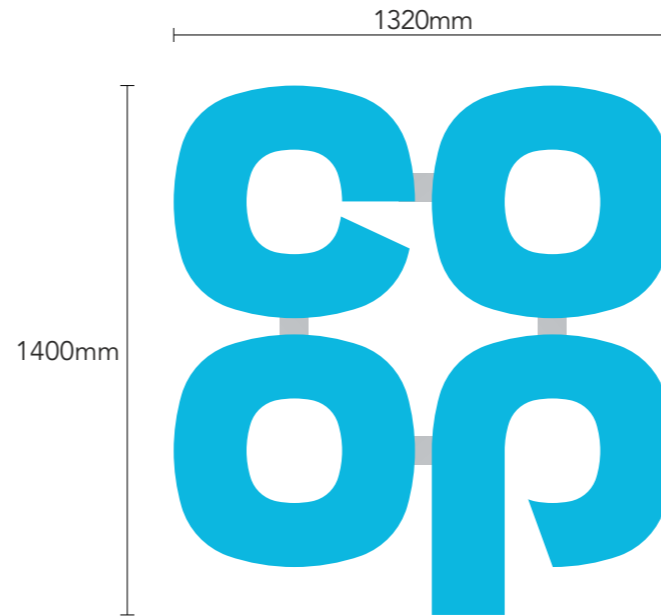
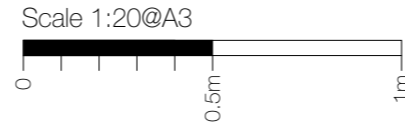
Item 1 Specification



Section through Co-op
scale 1:5 @ A3



Section through letters
scale 1:5 @ A3
NON ILLUMINATED



Item 1A - scale 1:20 @ A3

2no Single sided built up logo. Individual built-up letters to be mounted to aluminium mounting plate. Logo to be screw fixed into building.

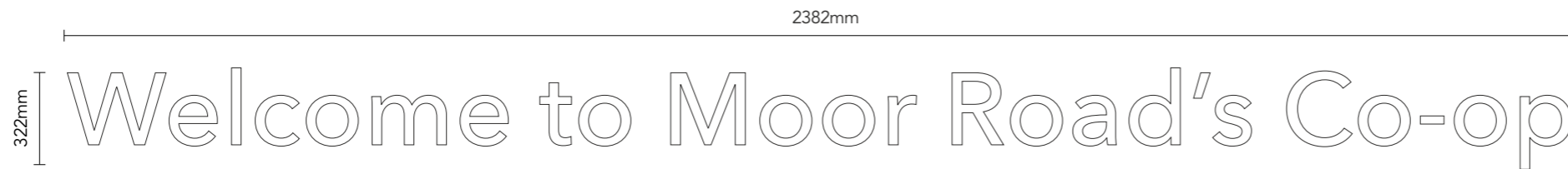
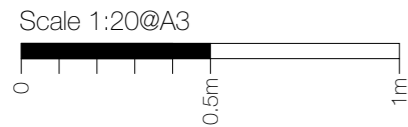
Logo to have blue acrylic faces with aluminium returns. Mounting plate and returns to be finished RAL 9006 Silver (60% Gloss)

Letters internally illuminated by white LEDs, giving face illumination.

Illumination level: 300cdm/2

Height from FFL to underside of panel being: 4300mm

All illuminated signs to have 5 amp switched fused spur behind sign location

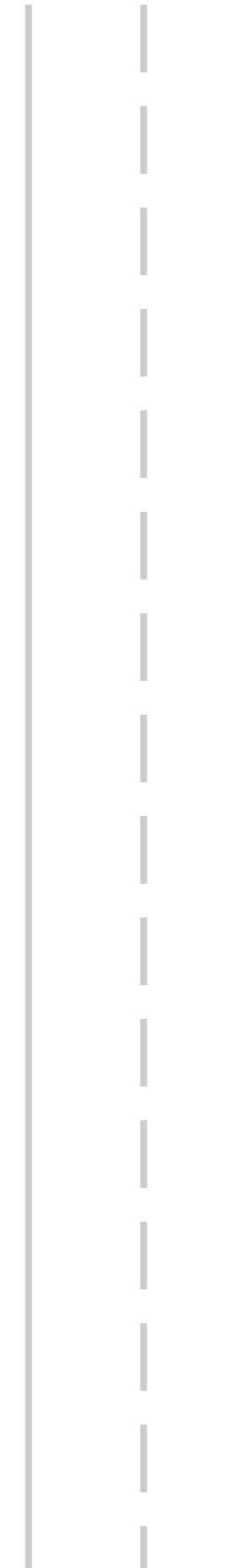
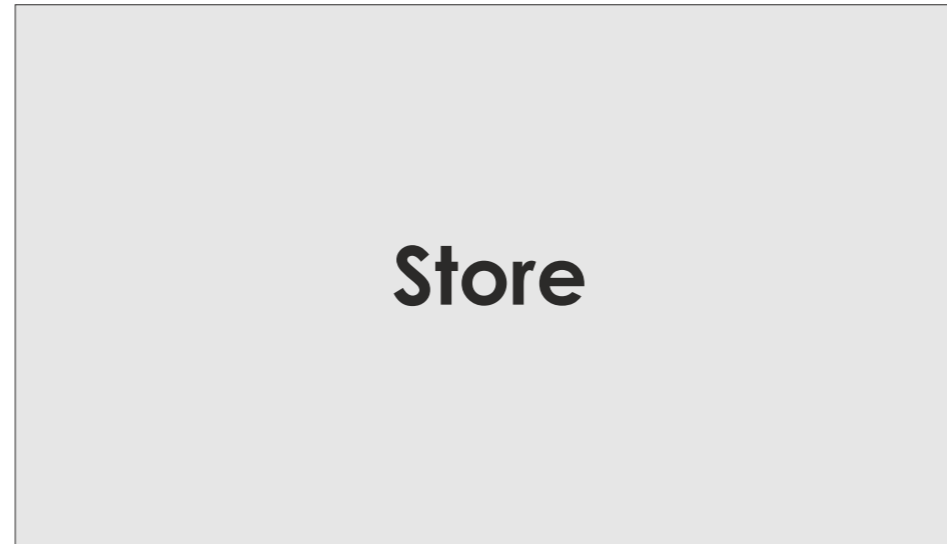


Item 1B - scale 1:20 @ A3

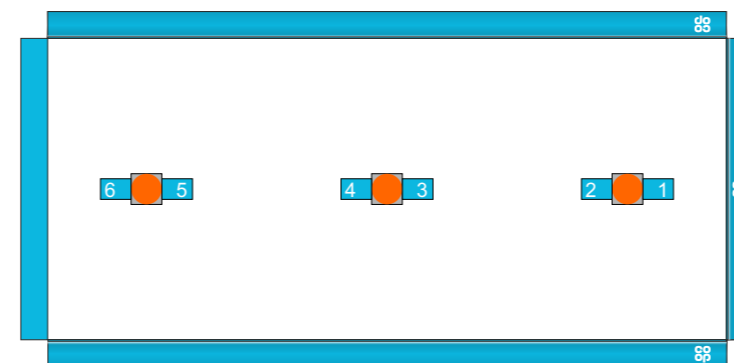
1no set of 322mm from 5mm thick white acrylic. Letters fitted to substrate with locator snap fixings. Non illuminated.

Height from FFL to underside of panel being: 2600mm

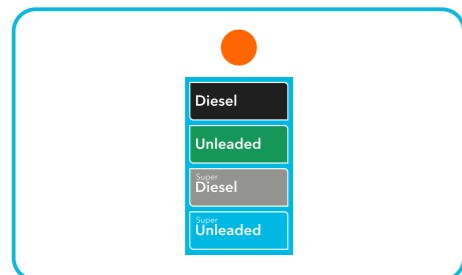
Non-standard CFN size

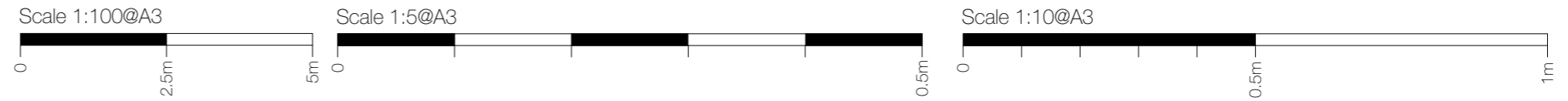


Moor Road



See page 9





Item 2A
20,270mm x 800mm



Item 2B
9000mm x 800mm



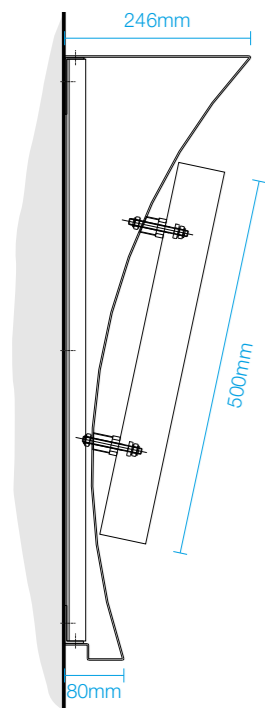
Item 2C
20,270mm x 800mm



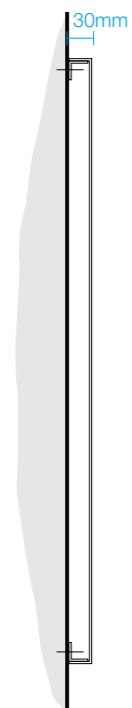
Item 2D
9000mm x 800mm



Manufacturing Note : Please consult survey for accurate manufacturing sizes.



Section through
2A-2C
scale 1:10 @ A3



Section through
2D
scale 1:10 @ A3

Canopy

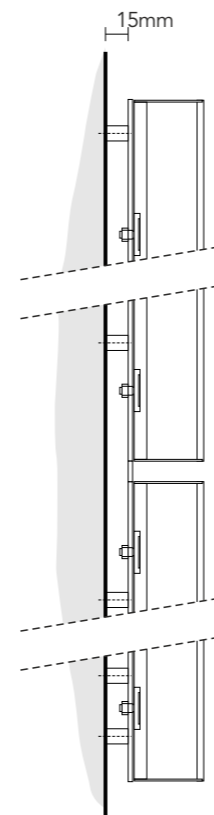
2mm folded/fabricated aluminium fascia panel fitted onto canopy with aluminium angle and framework. 2mm pre-coated white aluminium folded trough cover fixed through baffle/LED tray into top return of fascia panel. Panel to be through lit by means of white LEDs.

Logo

Steel mounted plate with individual built-up internally illuminated letters. Mounting plate to be 3mm mild steel fixed to canopy with brass locator fixings. 3D built up letters to have aluminium sides, 75mm deep with 5mm white acrylic faces. All visible edges, aluminium returns & mounting plate to be finished white. Internally illuminated by means of white LEDs providing face illumination only.

Sign to be fitted 5000mm from u/s of sign to FFL.

Note: Electrical feed to be supplied to sign position by main contractor prior to installation.



Logo Section - scale 1:5 @ A3



Face View - scale 1:20 @ A3

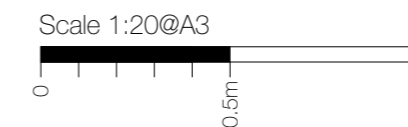
Item 3

Max Height Signs

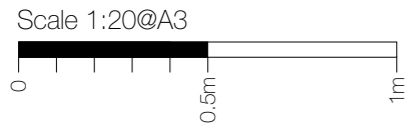
4No. new flat cut aluminium panels. To be face applied with digitally printed vinyl graphics. Suspended from underside of canopy by suitable means.

Sign to be fitted 4850mm from u/s of sign to FFL.

Artwork TBC.



All illuminated signs to have 5 amp switched fused spur behind sign location



Item 4A - Pump wayfinder

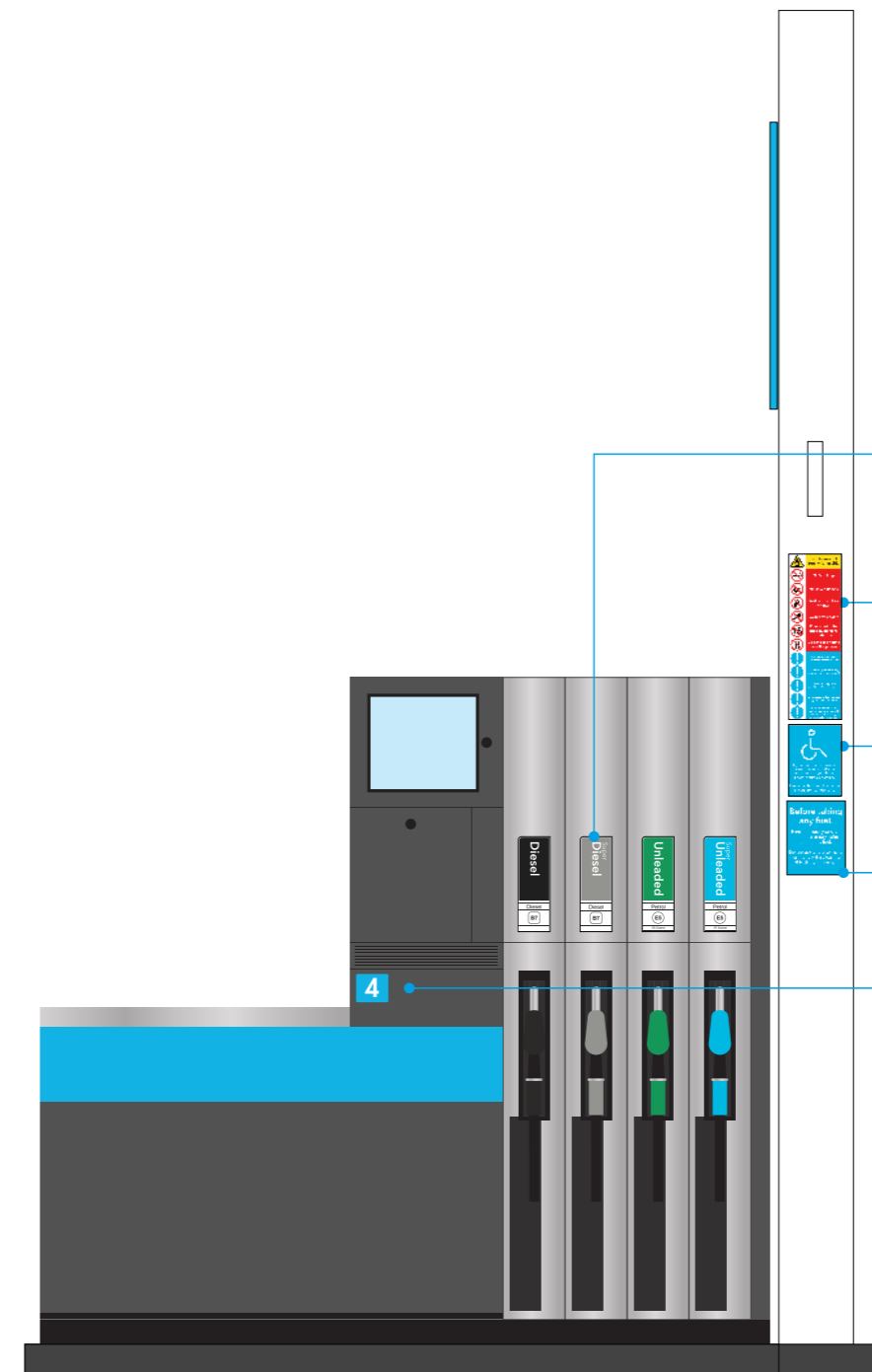
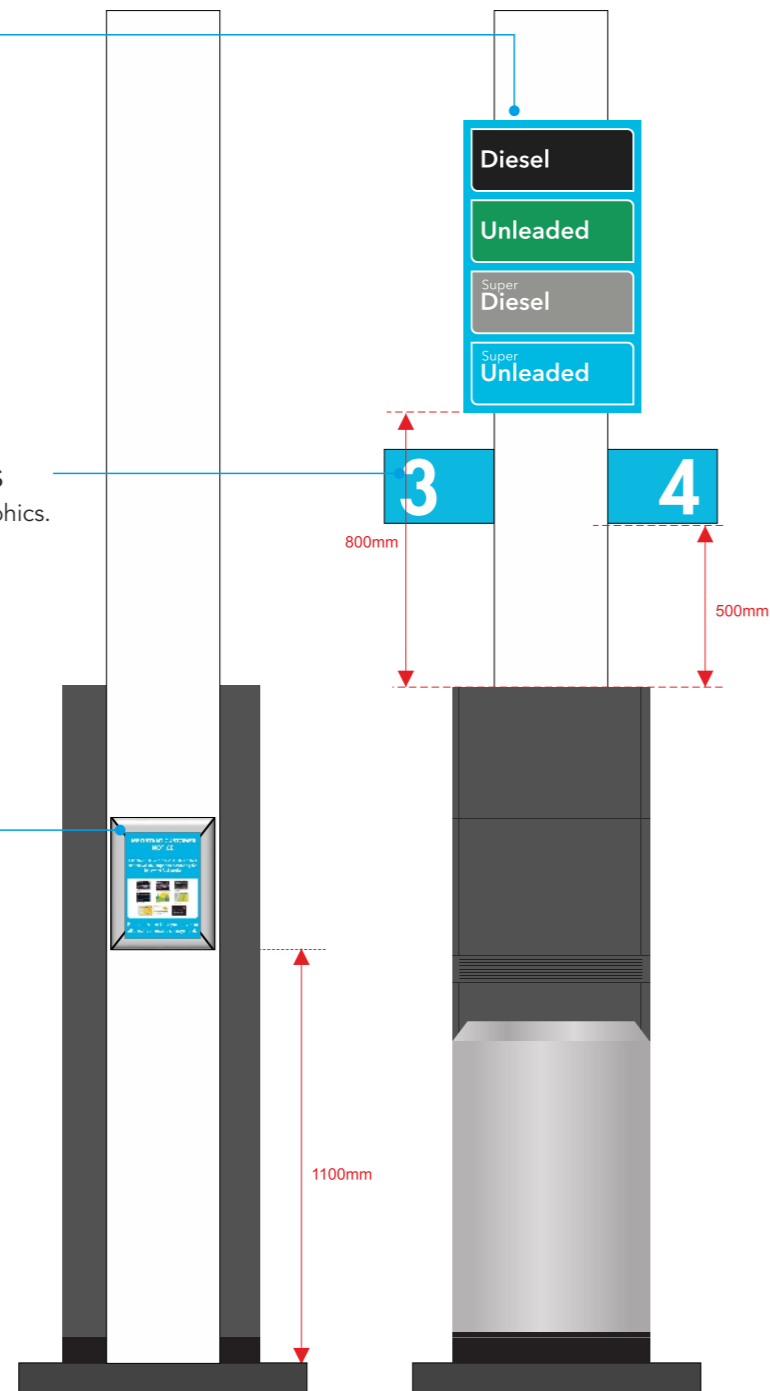
3no digitally printed panels.
Design is pump specific.

Item 4B - Pump number ears

6no Folded aluminium panels with vinyl graphics.

Item 4C - Clipframe

3no A4 clip frames



Item 4D - Fuel grades

24no Digitally printed vinyl graphics.

Item 4E - Stat safety notice

6no digitally printed vinyl graphics.

Item 4F - Blue badge

6no digitally printed vinyl graphics.

Item 4G - Payment sign

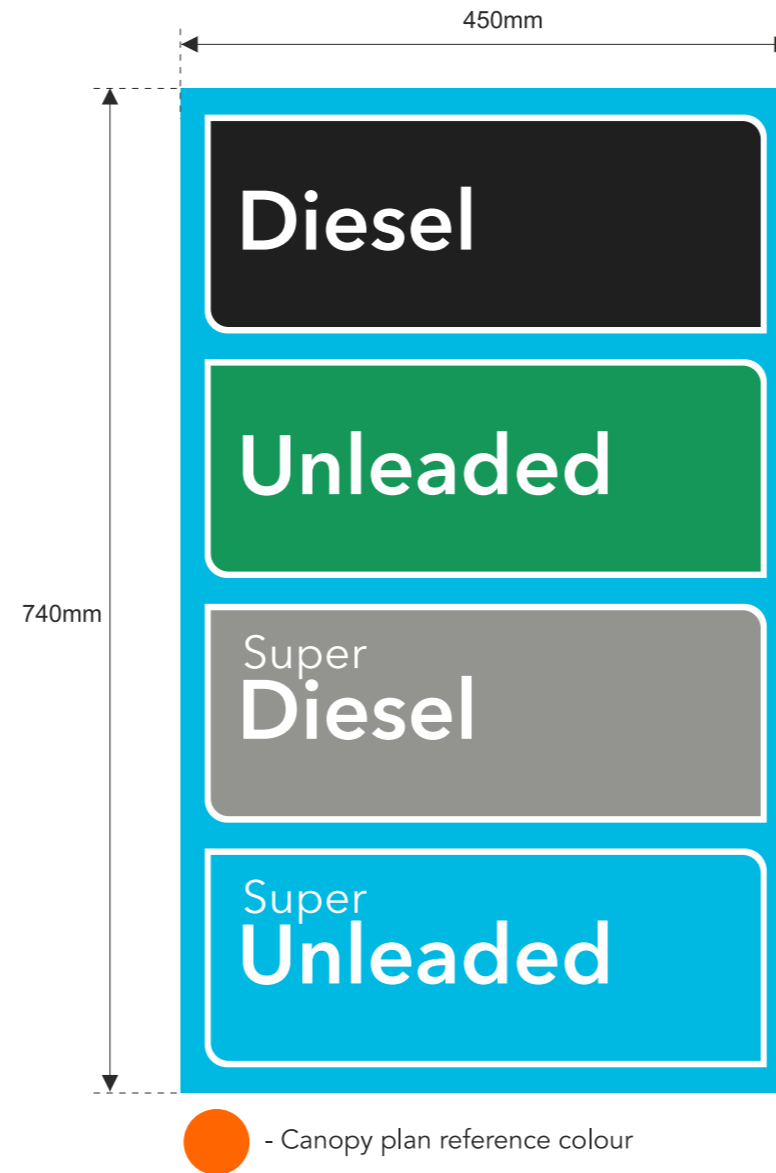
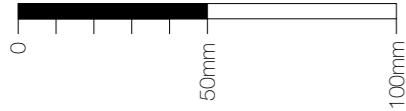
6no digitally printed panels.

Item 4H- Pump number vinyls

6no Vinyl graphics.
Artwork is pump specific.
Colour to match: Metamark M4258 Sky

Items 4A Specification

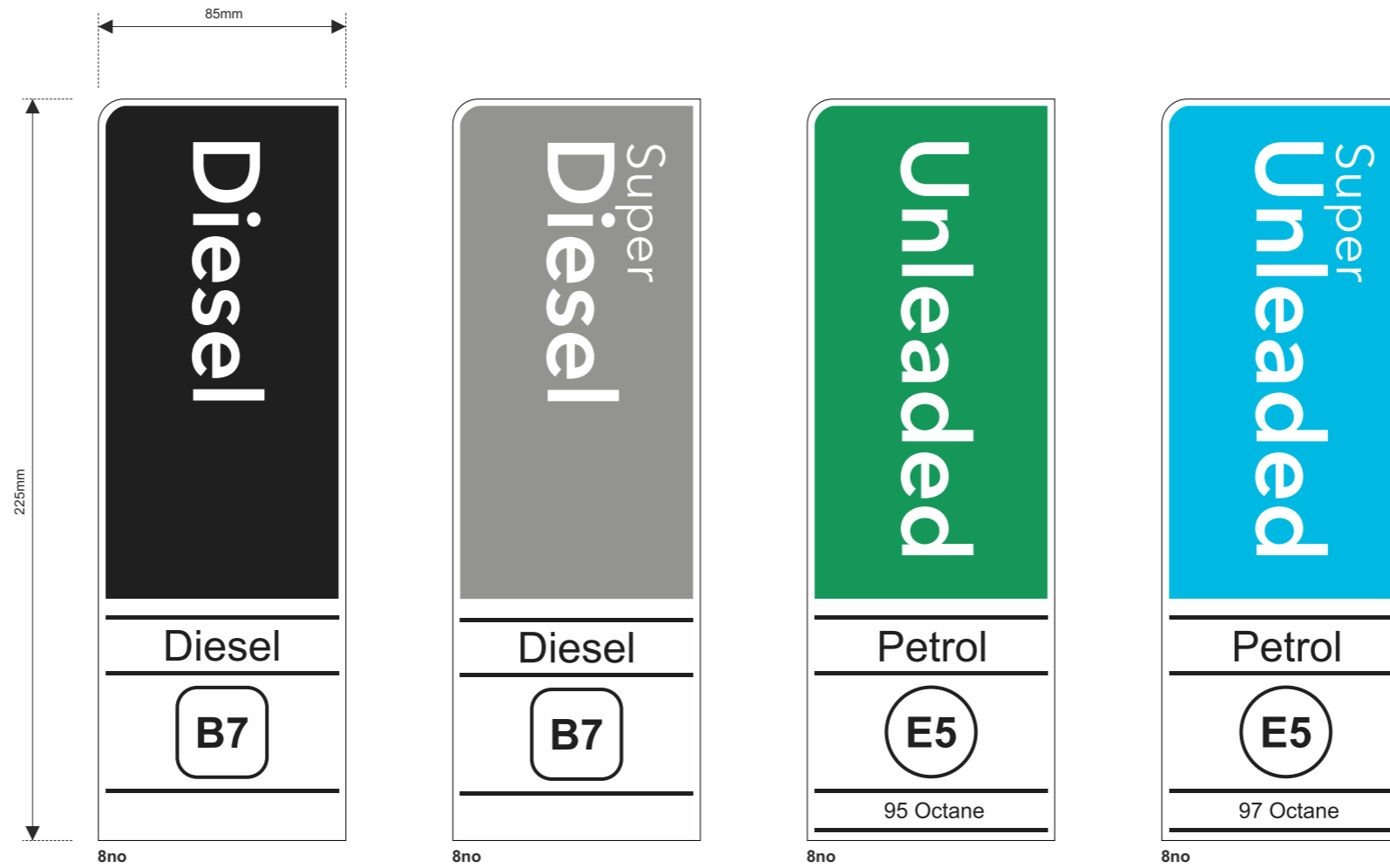
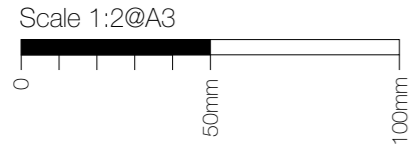
Scale 1:2@A3



Item 4A - Pump wayfinder
3no digitally printed ACM panels.
Design is pump specific.

Subject to confirmed pump configuration

Item 4D Specification



Item 4D - Fuel grades

24no digitally printed vinyl graphics.

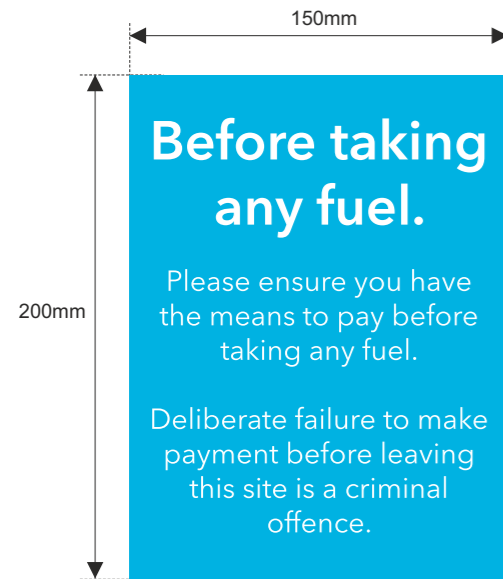
Pantone Refs: Blue = 306c, Green = 347c, Grey = 423c, Black Process K100

Subject to confirmed pump configuration

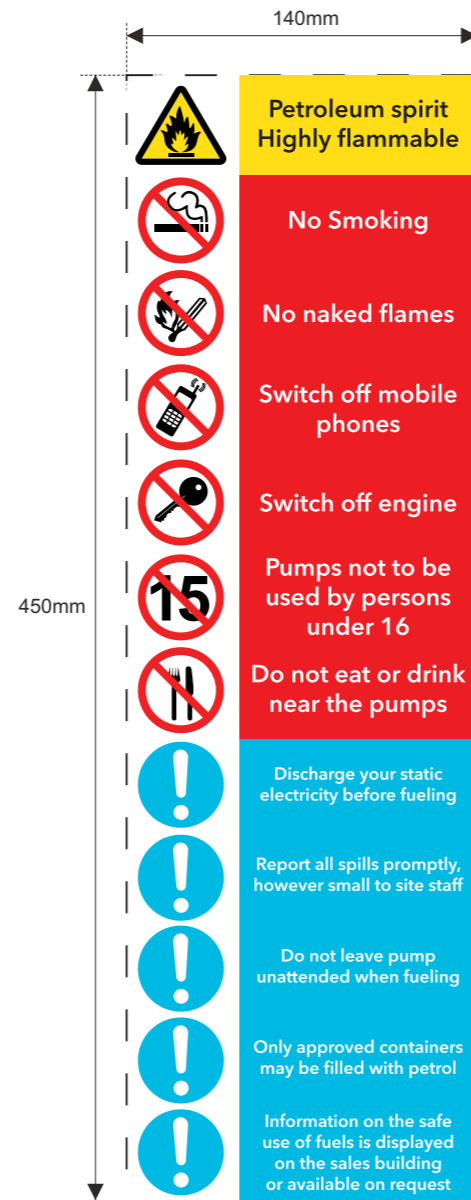
Manufacturing Note : Please consult survey for accurate manufacturing sizes.

Items 4G, 4E, 4F & 4C Specification

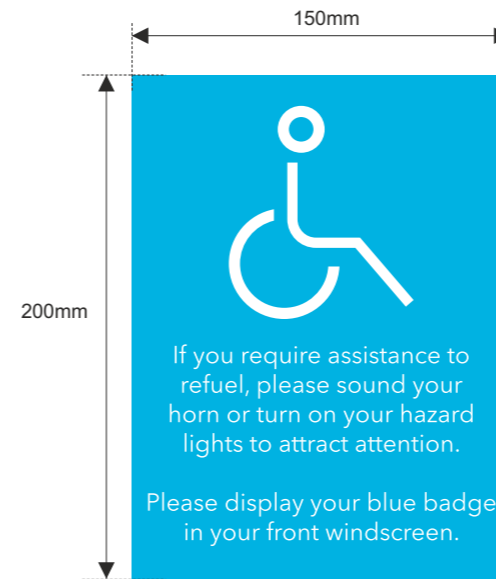
Item 4G - Payment sign
6No digitally printed vinyl graphics.



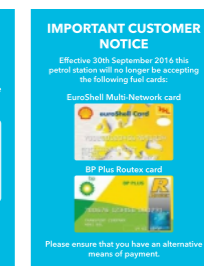
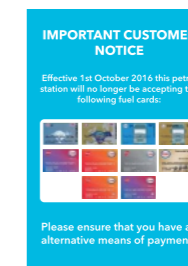
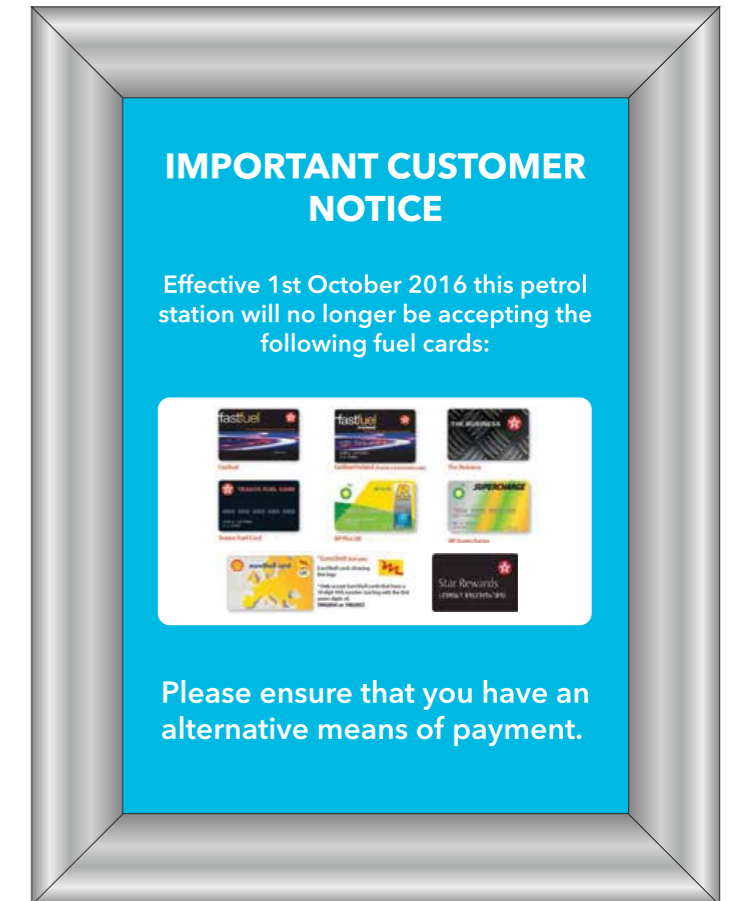
Item 4E - Stat safety notice
6No digitally printed vinyl graphics.



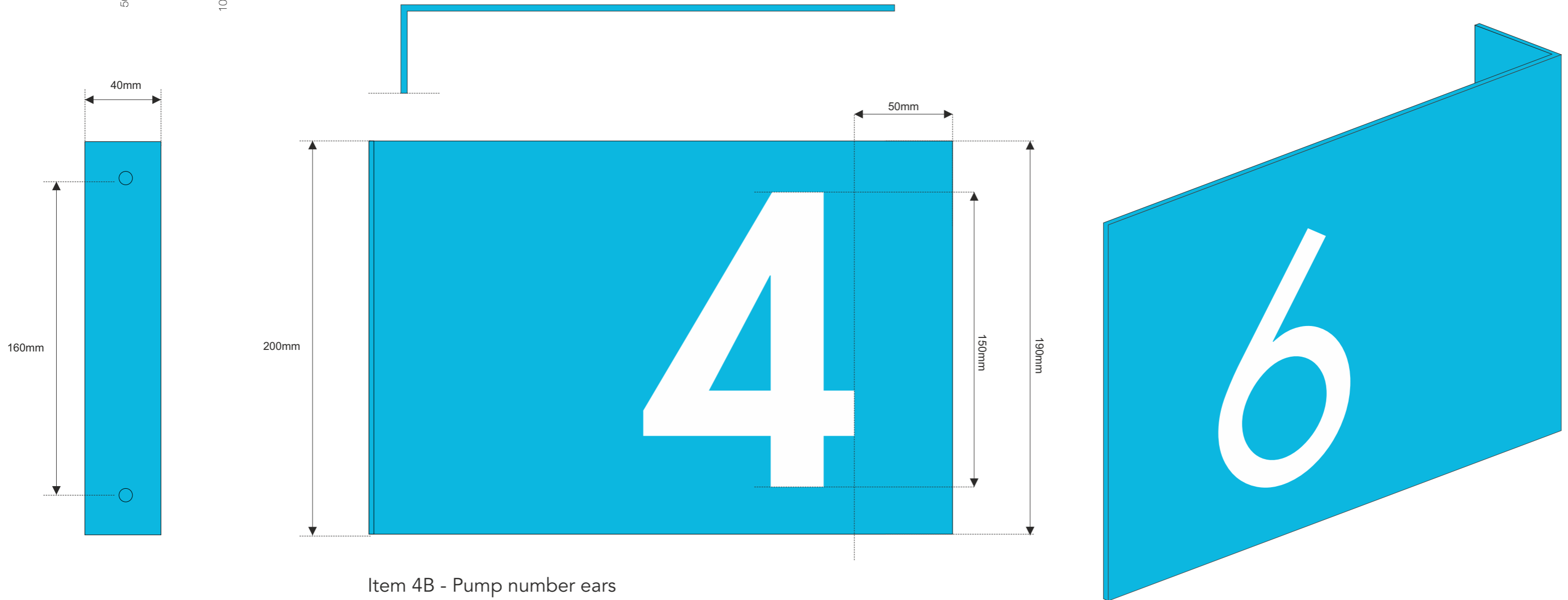
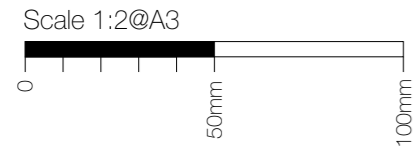
Item 4F - Blue badge
6No digitally printed vinyl graphics.



Item 4C - Clipframe
3No A4 clip frames



Item 4B & 4H Specification



Item 4B - Pump number ears

6no 2mm folded aluminium panels finished RAL 9016 with vinyl graphics on both side.
Vinyl: Metamark M4258 Sky



8No Sets of 150mm (H) white vinyl numbers 1-8. Face applied to panels.

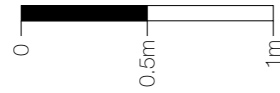


Item 4H - Pump number vinyls

6no Vinyl graphics.
Artwork is pump specific.
Colour to match: Metamark M4258 Sky

Item 5 Specification

Scale 1:30@A3



Item 5 - Scale 1:30@A3

1No. New totem

Frame constructed from 200 x 100mm box section, coated Traffic Grey Ral 7043 30% Matt gloss.

Totem panels from 5mm clear acrylic with rear applied stencil cut digitally printed blue vinyl to match PMS306c. Rear of vinyl to be reverse applied with translucent white vinyl to provide text and logo illumination.

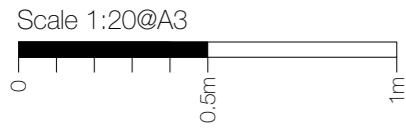
Face illuminated by white LEDs.

3D built-up letters to have aluminium sides, 50mm deep with 5mm Co-op white acrylic faces. All visible edges, aluminium returns & mounting plate to be finished Silver Ral 9006 60% gloss.

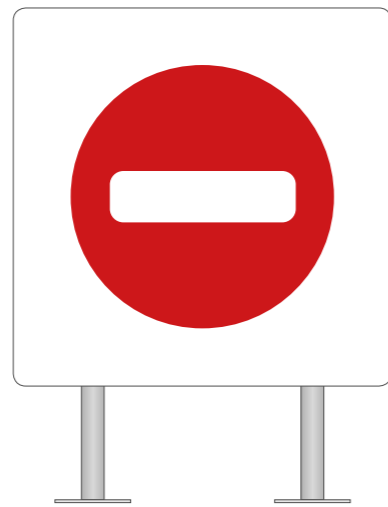
Face illuminated by white LEDs.

Opening times & commditioces are to be confirmed.

Items 6 & 7 Specification



Road View



Store View

Item 6 - Scale 1:20@A3

2No. 1000x1000mm new car park sign.

Flat dibond panel with applied vinyl display, anti graffiti lacquered, rounded corners. Panel Fitted to a new 76mm dia. steel post with signfix channel. Fitted to ground by suitable base plates.

Non illuminated.

Height from FFL to underside of sign being: 300mm



Store View

Road View

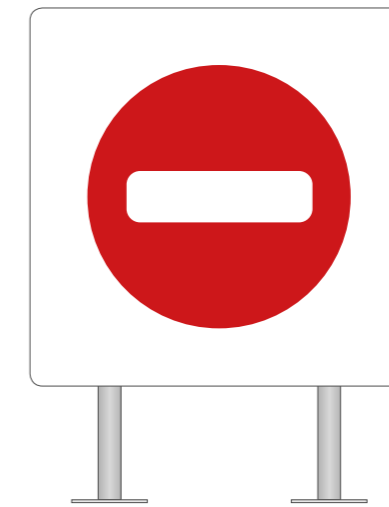
Item 7A - Option 1 - Scale 1:20@A3

2No. 1000x1000mm new car park sign.

Flat dibond panel with applied vinyl display, anti graffiti lacquered, rounded corners. Panel Fitted to a new 76mm dia. steel post with signfix channel. Fitted to ground by suitable base plates.

Non illuminated.

Height from FFL to underside of sign being: 650mm



Store View



Road View

Item 7B - Scale 1:20@A3

2No. 1000x1000mm new car park sign.

Flat dibond panel with applied vinyl display, anti graffiti lacquered, rounded corners. Panel Fitted to a new 76mm dia. steel post with signfix channel. Fitted to ground by suitable base plates.

Non illuminated.

Height from FFL to underside of sign being: 300mm



Item 7A - Option 2 - Scale 1:20@A3

2No. 550x550mm Flat dibond panels with applied vinyl display, anti graffiti lacquered, rounded corners. Fixed to either side of 600mm high wall with suitable fixings.

Non illuminated.

Height from FFL to underside of sign being: 50mm



Item 8 - scale 1:10@ A3

1No. 450mm Dia. Flat dibond panel with applied vinyl display, anti graffiti lacquered, rounded corners. Fixed to wall with suitable fixings.

Non illuminated.

Height from FFL to underside of sign being: 1400mm



Item 9 - scale 1:10@ A3

1No. 450mm Dia. Flat dibond panel with applied vinyl display, anti graffiti lacquered, rounded corners. Fixed to wall with suitable fixings.

Non illuminated.

Height from FFL to underside of sign being: 1400mm



Item 10 - scale 1:10@ A3

1No. 450mm Dia. Flat dibond panel with applied vinyl display, anti graffiti lacquered, rounded corners. Fixed to wall with suitable fixings.

Non illuminated.

Height from FFL to underside of sign being: 1400mm

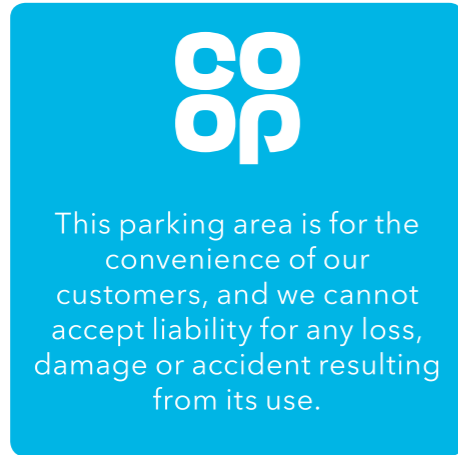


Item 11 - scale 1:10@ A3

1No. 450mm Dia. Flat dibond panel with applied vinyl display, anti graffiti lacquered, rounded corners. Fixed to wall with suitable fixings.

Non illuminated.

Height from FFL to underside of sign being: 1400mm



Item 12 - scale 1:10@ A3

3No. 600x600mm Flat dibond panel with applied vinyl display, anti graffiti lacquered, rounded corners. Fixed to wall / fence with suitable fixings.

Non illuminated.

Height from FFL to underside of sign being: 1400mm



Item 13 - scale 1:10@ A3

1No. 600x600mm Flat dibond panel with applied vinyl display, anti graffiti lacquered, rounded corners. Fixed to fence with suitable fixings.

Non illuminated.

Height from FFL to underside of sign being: 1400mm

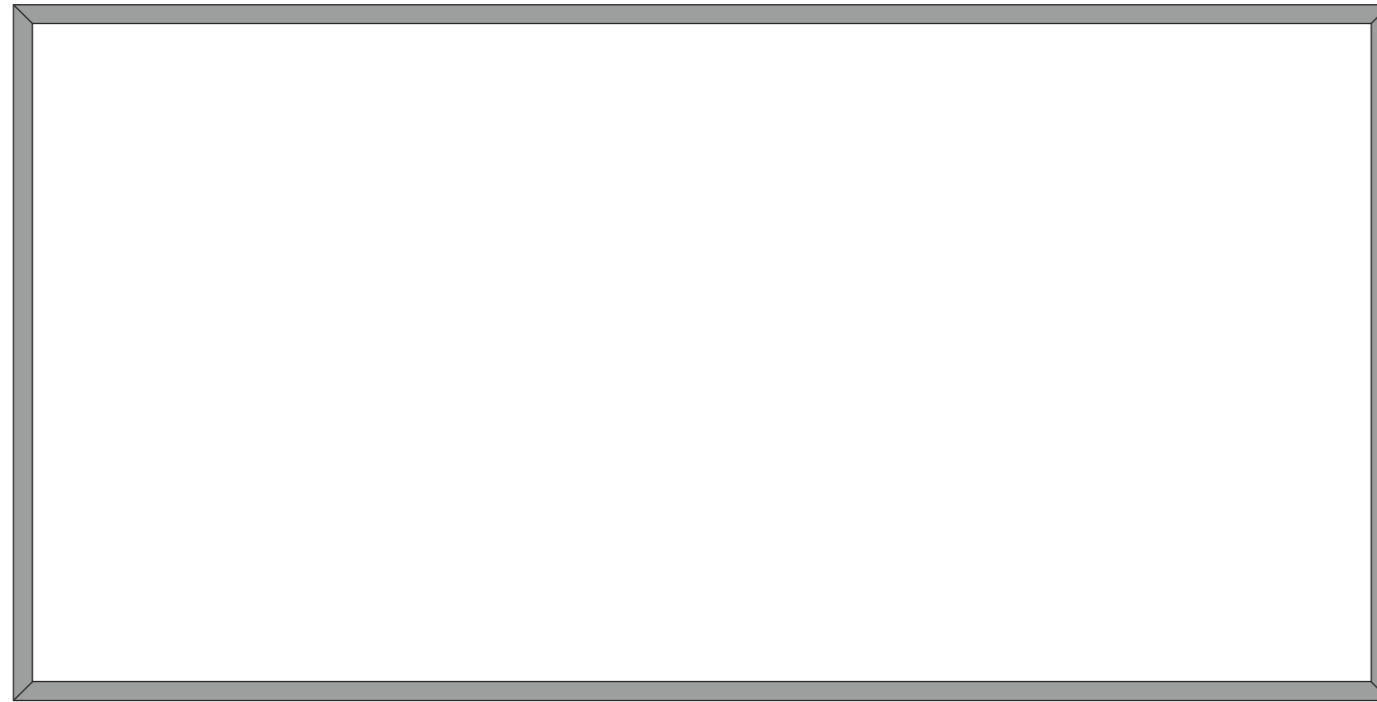


Item 14 - scale 1:10@ A3

1No. 600x600mm Flat dibond panel with applied vinyl display, anti graffiti lacquered, rounded corners. Fixed to wall / fence with suitable fixings.

Non illuminated.

Height from FFL to underside of sign being: 1400mm



Front View



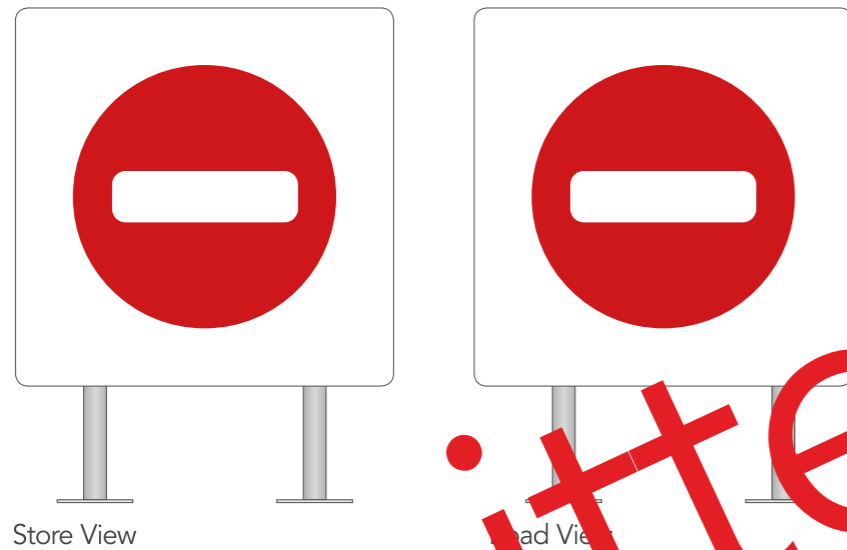
Section View

Item 15 - scale 1:10 @ A3

9No. 1820x920x25mm Banner frames.

Aluminium angle, mill finished & welded together with eyelet holes for banner fixing.

Height from FFL to underside of sign being: 1400mm



Store View

Road View

Item 16 - Scale 1:10@A3

2No. 1000x1000mm new car park sign.

Flat dibond panel with applied vinyl display, anti graffiti lacquered, rounded corners. Panel fitted to a new 76mm dia. steel post with signfix channel. Fitted to ground by suitable base plates.

Non illuminated.

Height from FFL to underside of sign being: 300mm



Item 17 - scale 1:10@ A3

2No. Single sided post signs

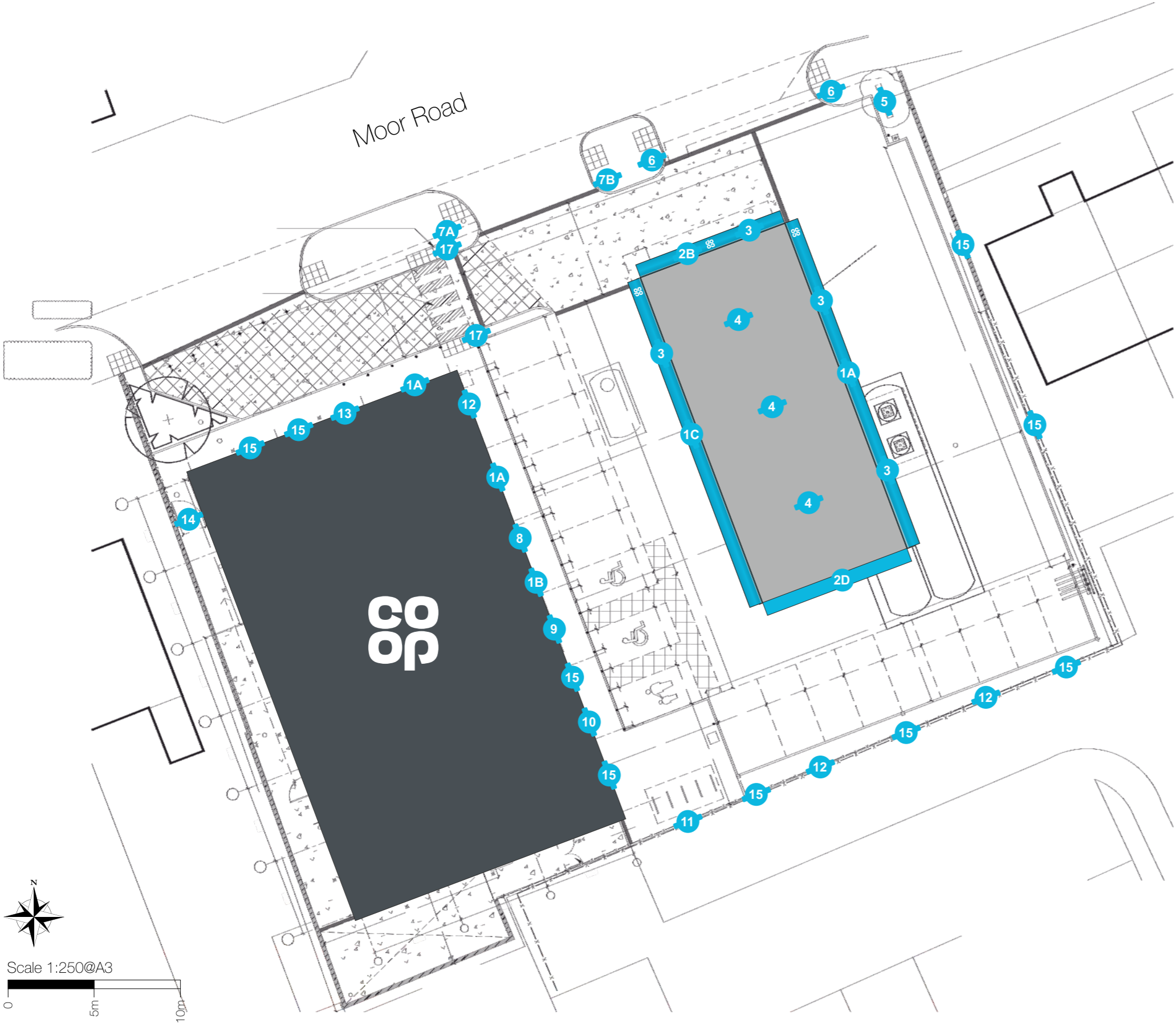
510 x 450mm Flat dibond panel with applied vinyl display, anti graffiti lacquered. Panel Fitted to a new 76mm dia. steel post with signfix channel.

Post powder coated Ral 7043 traffic grey and fitted to ground by suitable means.

Non illuminated. .

Height from FFL to underside of sign being: 2100mm

Site Plan



- 1A - 1400mm Face Illuminated Logo
- 1B - CFN
- 2 - Canopy
- 3 - Max height sign
- 4 - Pump signs
- 5 - Totem
- 6 - Welcome / No entry PM
- 7A - Thank you / No entry WM / PM
- 7B - Thank you / No entry PM
- 8 - Bag sign
- 9 - Disabled sign
- 10 - Parent & child sign
- 11 - Bicycle sign
- 12 - Disclaimer sign
- 13 - Deliveries / Keep clear sign
- 14 - Deliveries sign
- 15 - Banner frame
- 16 - No entry / No entry
- 17 - Pedestrian Crossing