

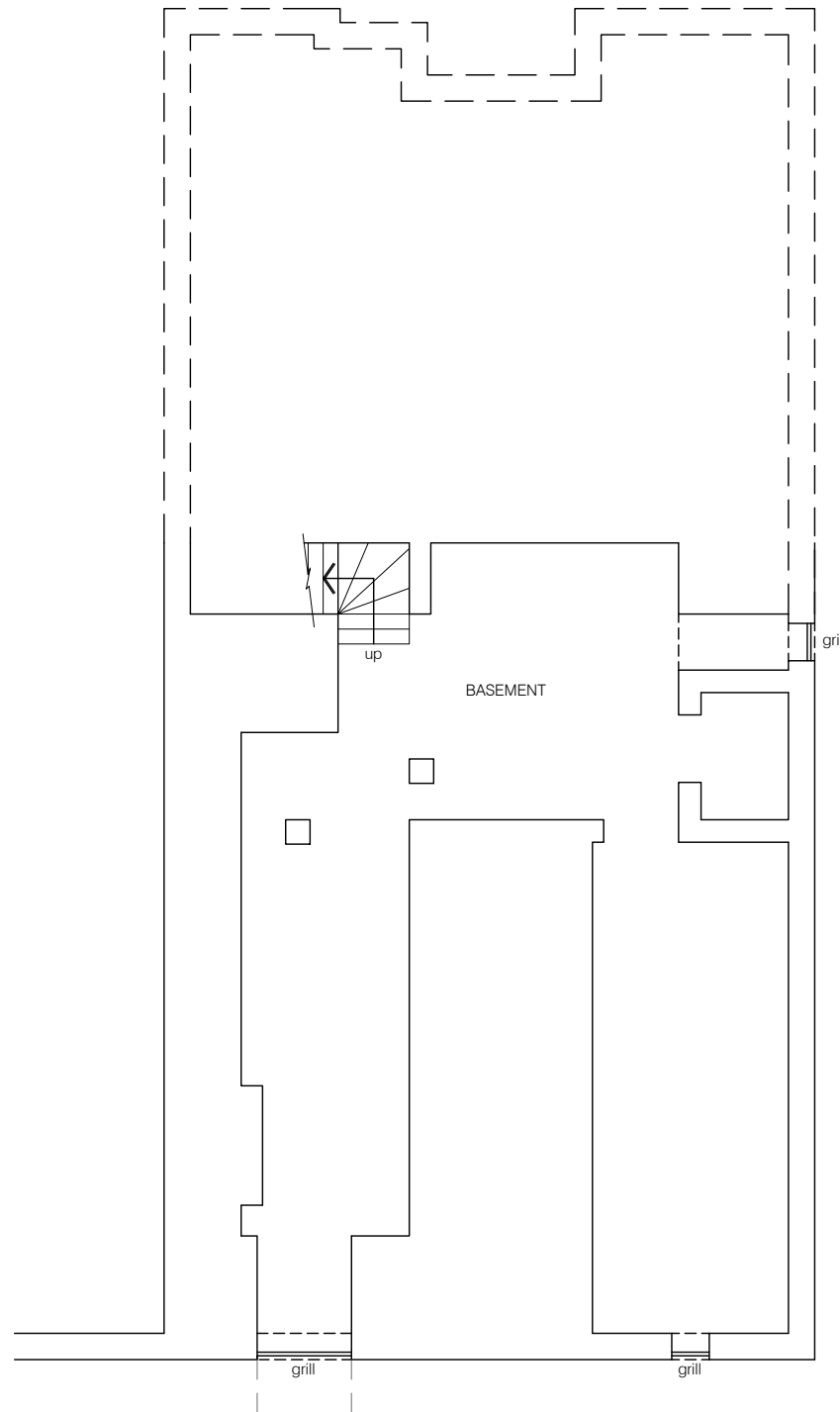
© This drawing is copyright.
It is sent to you in confidence and must not be reproduced or disclosed to third parties without our prior permission.

Do not scale from this drawing, other than for Local Authority Planning purposes.

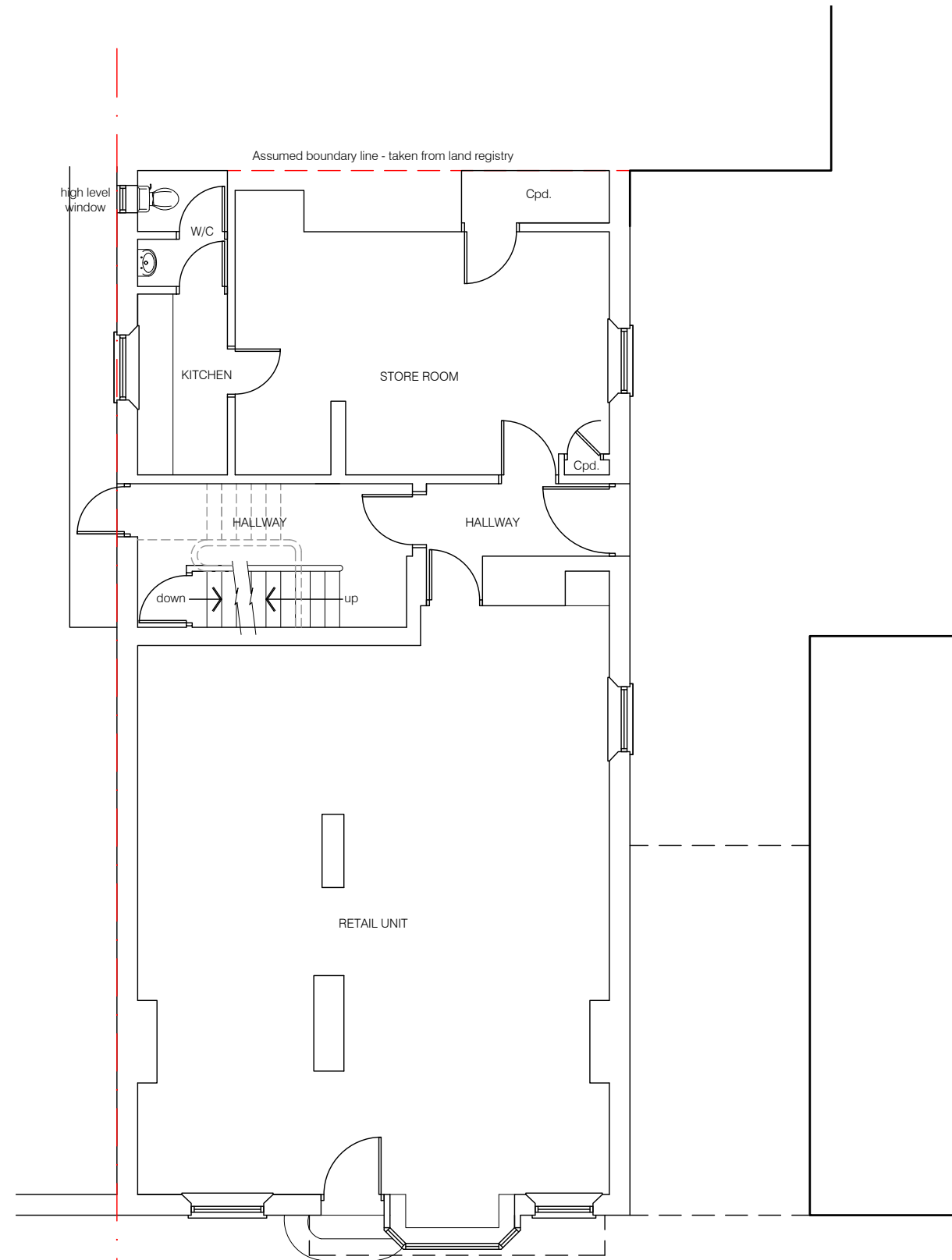
This drawing is to be read in conjunction with all relevant consultants, specialist manufacturers drawings and specifications.

Any discrepancies in dimensions or details on or between these drawings should be drawn to our attention.

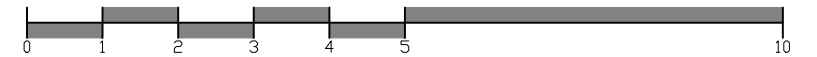
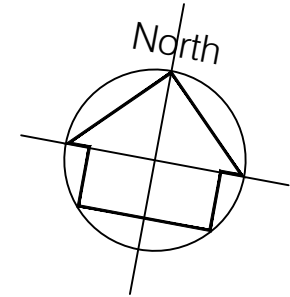
All dimensions are in millimetres unless noted otherwise.



BASEMENT FLOOR PLAN



GROUND FLOOR PLAN



REV	DATE	DESCRIPTION	INITIAL	CHECKED
PLANNING				



harding rose architects

CLIENT
LAMRON DEVTS (ODIHAM) LTD

PROJECT
108 High Street, Odiham, RG29 1LP

TITLE
Existing Basement and Ground Floor Plans

SCALE
1:100 @ A3

DATE
21.01.22

DRAWN
JC

PROJECT NO.
19.767

P.202