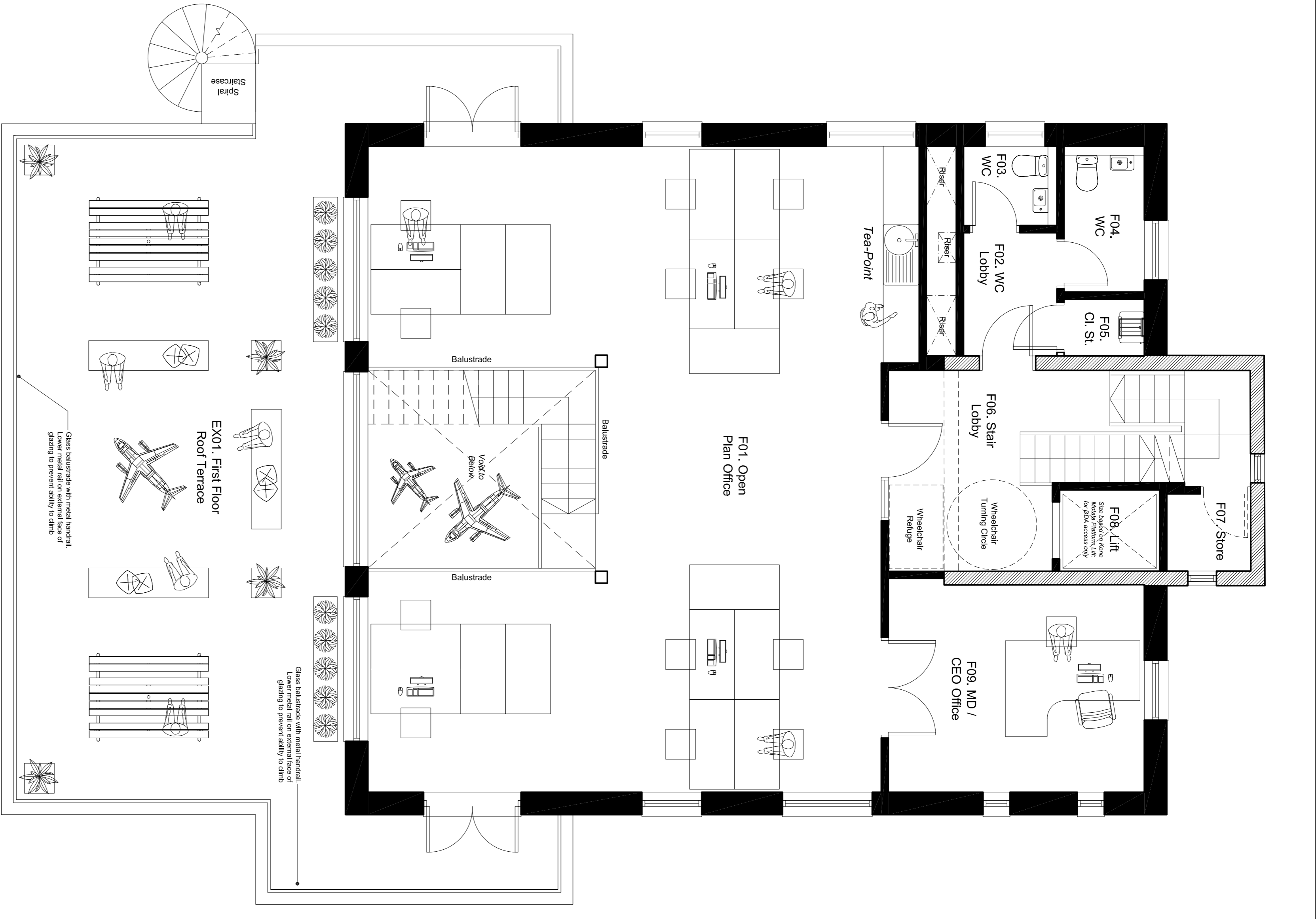
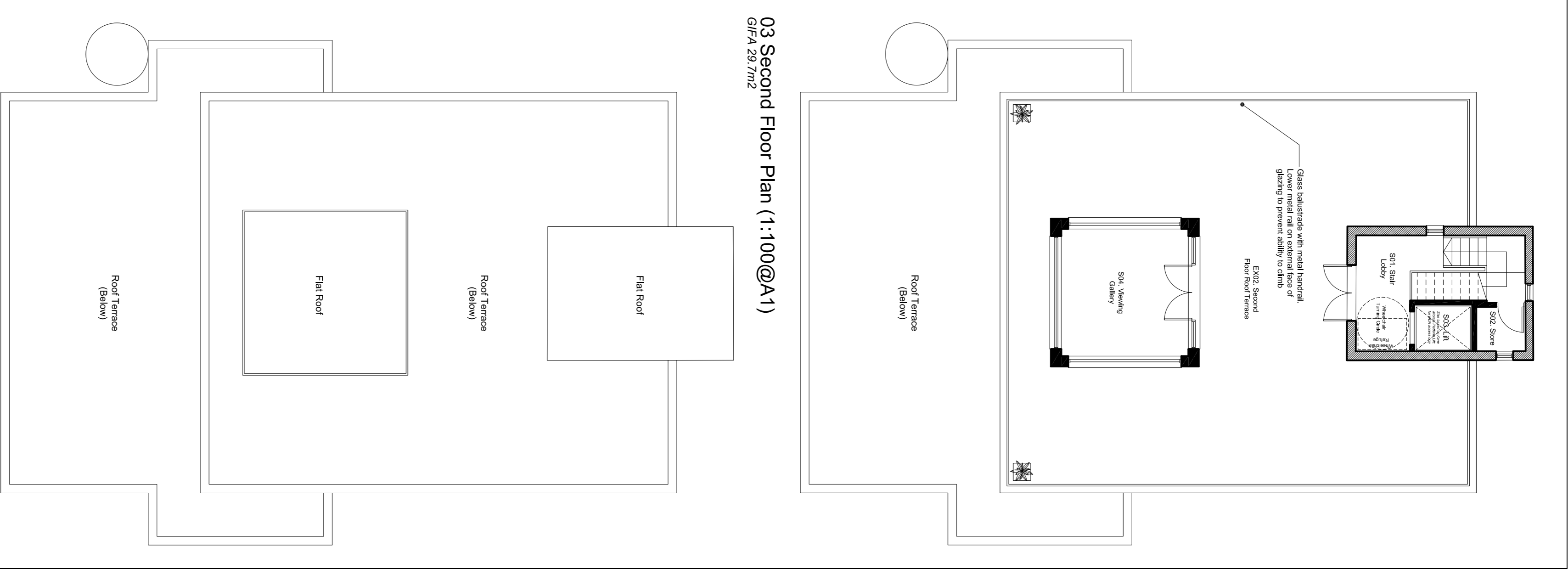


01 Ground Floor Plan (1:50@A1)
GIFA 207.8m²

TOTAL GIFA OF
CONTROL TOWER = 370m²

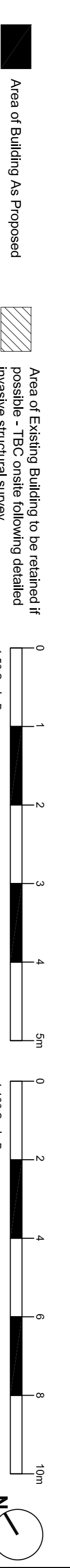


02 First Floor Plan (1:50@A1)
GIFA 132.7m²



03 Second Floor Plan (1:100@A1)
GIFA 29.7m²

04 Roof Plan (1:100@A1)



Rev: Date: A 21.03.2022 B 22.03.2022 C 12.04.2022 25.04.2022	Notes: Issued for Comment Notes revised Client and Consultant Comments picked up. Issued for Condition Discharge Handrail note added. Issued for Condition Discharge	Client: W. J. & M. Mash Limited	Job Number: 2114	Drawing No: P_1010	Revision: C	Status: Planning	Date of Initial Issue: 21.03.2022	Scale: VARIES	Approved By: AGC	Drawn By: AGC	Title: Plans As Proposed	Project: Bovingdon Airfield WW2 Control Tower Chesham Rd, Bovingdon Hemel Hempstead, HP3 0NP	
													Notes: Issued for Comment Notes revised Client and Consultant Comments picked up. Issued for Condition Discharge Handrail note added. Issued for Condition Discharge
													Notes: Issued for Comment Notes revised Client and Consultant Comments picked up. Issued for Condition Discharge Handrail note added. Issued for Condition Discharge