

SCALE 1:20

- All works to be carried out in accordance with the following:-
1. UK water industry research ltd. 'Civil Engineering Specification for the water industry, 5th Edition.
 2. WATER UK, 'Sewers for Scotland'
 3. BE EN 752 Drain and Sewers Systems outside buildings.

- Foul Water: Falls in runs - 1:10 max - 1:60 min.
- All new drainage branches to be swept in direction of flow.
- All new drainage branches to be fitted with a RE.

SUDS

- All parking areas and new tracks are to constructed with a porous build up on free draining stone.
- All pods to have a 250mm wide by a min 200mm deep gravel border to all draining sides.

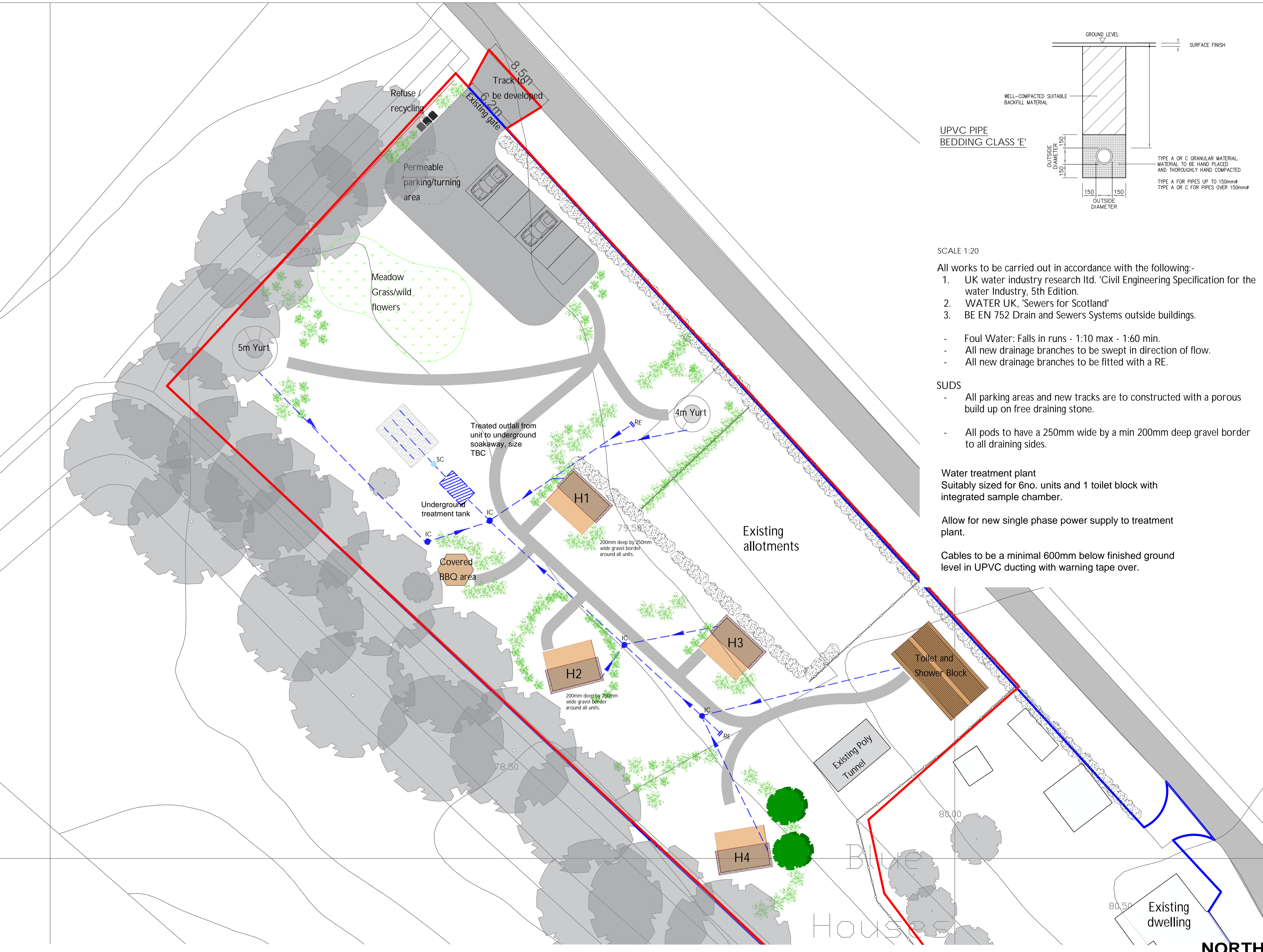
Water treatment plant
 Suitably sized for 6no. units and 1 toilet block with integrated sample chamber.

Allow for new single phase power supply to treatment plant.

Cables to be a minimal 600mm below finished ground level in UPVC ducting with warning tape over.

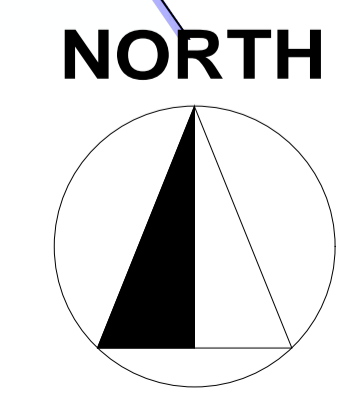
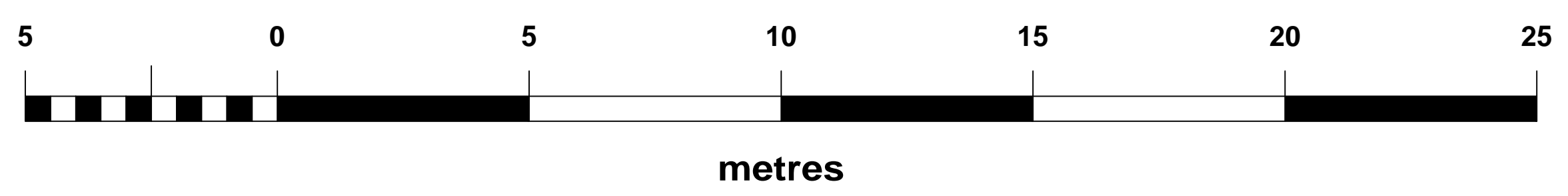
KEY TO SYMBOLS

- DRAINAGE RUN
- IC INSPECTION CHAMBER
- RE RODDING EYE
- SC SAMPLE CHAMBER
- WATER TREATMENT PLANT
- SOAKAWAY



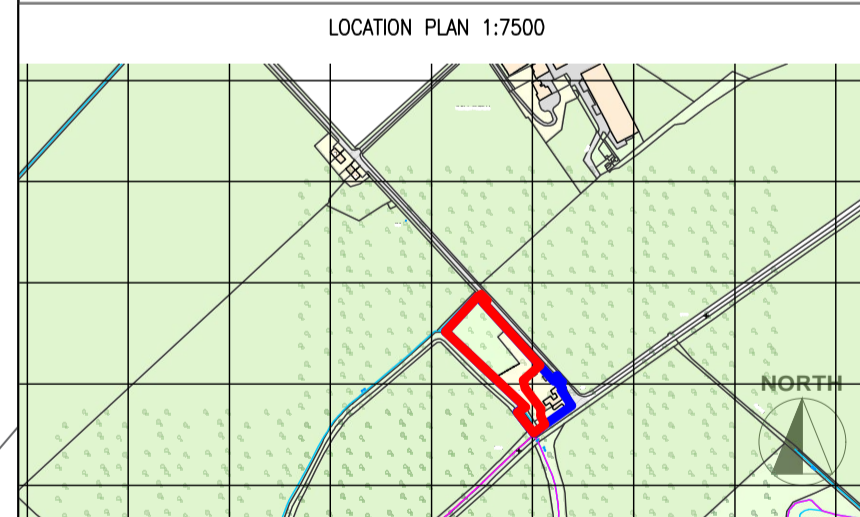
OWNERSHIP BOUNDARY
 AREA = 5818 m2

SITE BOUNDARY
 SITE AREA = 4370 m2



Date	Description	Rev	By

Revision Description



Project:
 Proposed Glamping Site - For Naomi Michell
 1 Hassington Blue Houses, Kelso
 TD5 7RA

Drawing Title:
 PROPOSED DRAINAGE PLAN

Drawing Number:
 211022-01-04

Revision:

Date: 31.01.2022
 Scale: 1:200 @ A1
 Drawn By: TA
 CAD Dwg File: -
 Checked By: EC

Issue Status:
 Full Planning Application