

Do not scale this drawing use figured dimensions only.
 Check dimensions on site.
 Report any drawing or co-ordination discrepancies to the Architect prior to proceeding with any works.
 Do not assume ask for clarification

Key to electrics

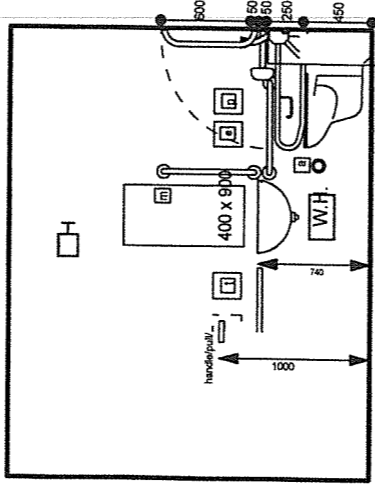
- ⊗ Pir switch
- LED Module Light Fitting
- ⊞ Extract Fan
- ⚡ Switched spur for white goods
- ⚡ Double gang socket

Grabrails - 35mm dia. in contrasting colour.

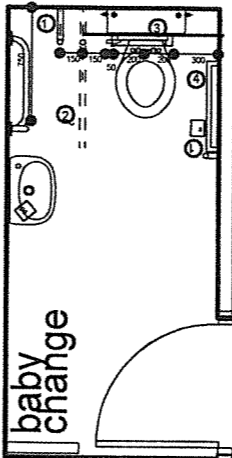
- ① fixed vertical rail 600 long
- ② hinged support rail at 700 (no legs)
- ③ fixed horizontal rail behind wc at 700
- ④ fixed horizontal rail at 750

Equipment / Fittings

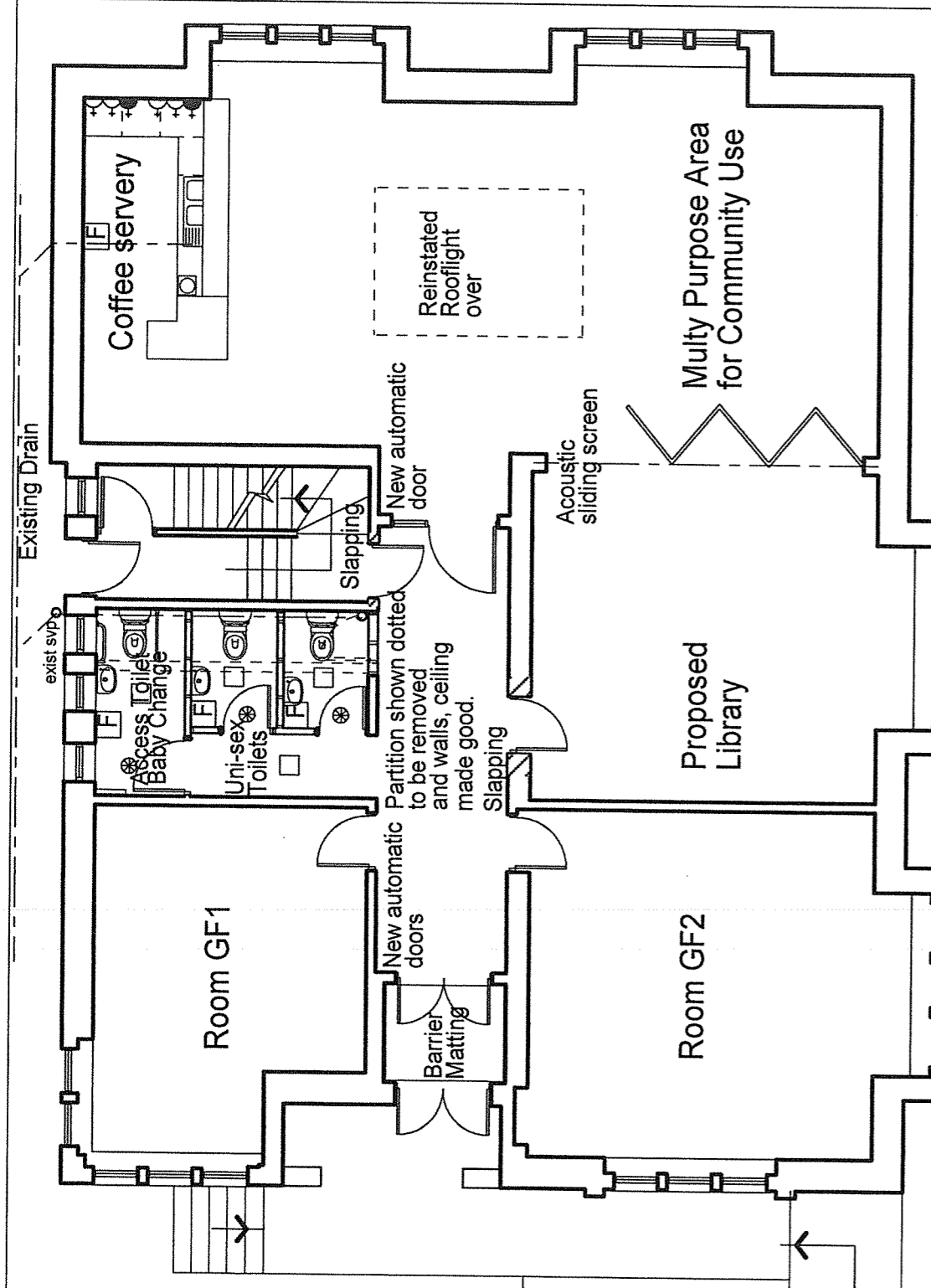
- Ⓛ toilet paper dispenser - sgl. handed use
- Ⓛ paper towel dispenser - sgl. handed use
- Ⓛ emergency wipes - sgl. handed use
- Ⓛ soap dispenser
- Ⓛ electric hand drier
- Ⓛ alarm, extended to low level, distinct from other controls
- Ⓛ flushing lever/pull
- Ⓛ mirror 400w x 900h at 900 to bottom
- Ⓛ coat hook at 1,400
- Ⓛ sealed container for disposables
- Ⓛ shelf
- Ⓛ pull switch for room light at 1000



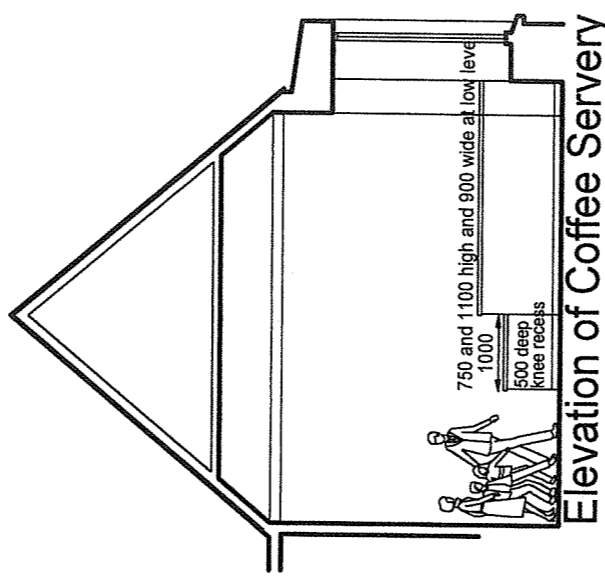
Typical Plan and Section 1:50 Scale



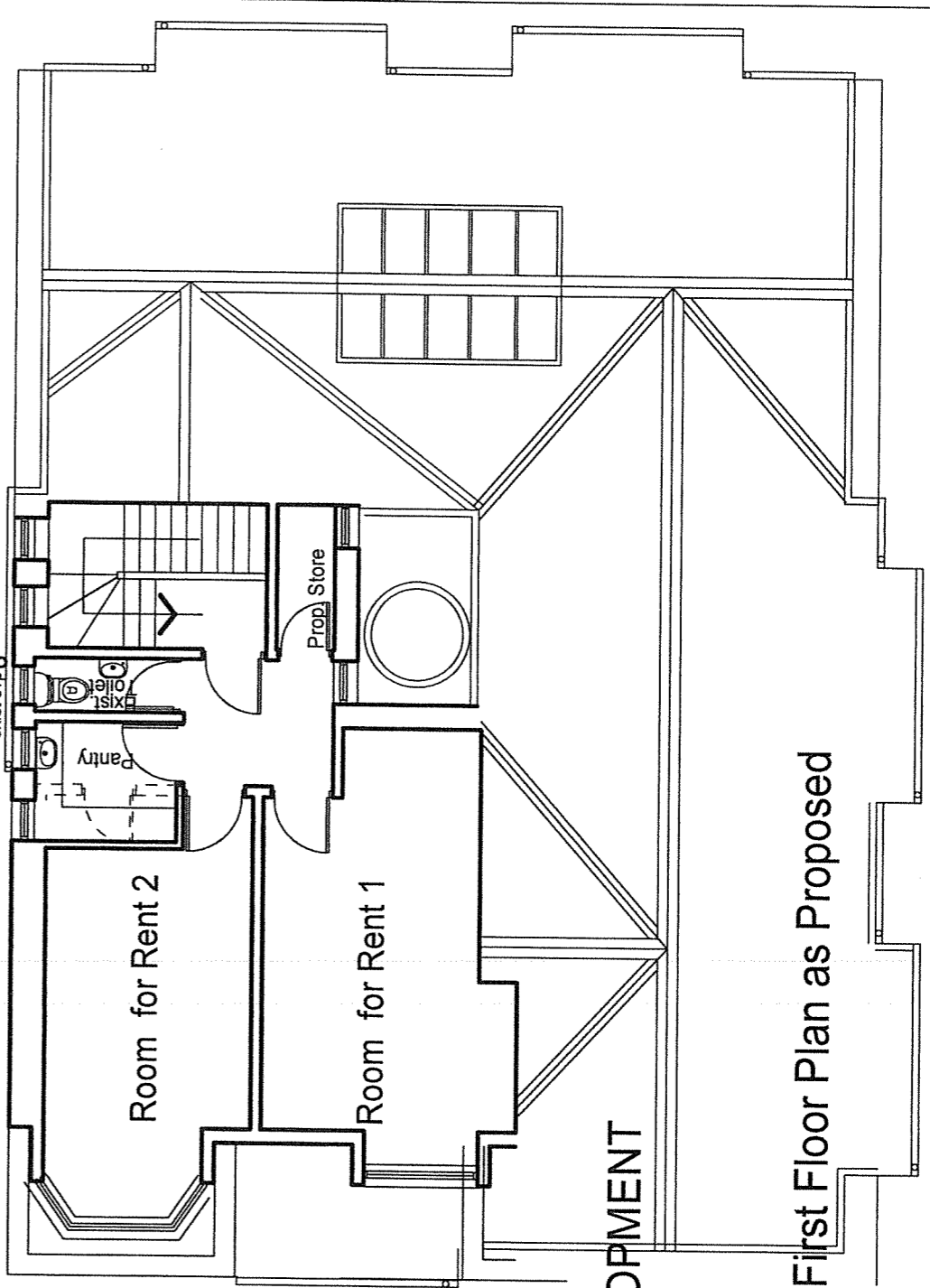
baby change



Ground Floor Plan as Proposed



Elevation of Coffee Servery

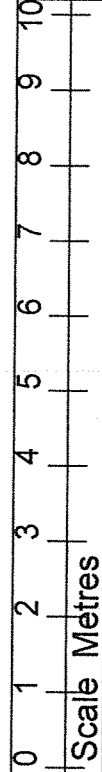


First Floor Plan as Proposed

DRAWING UNDER DEVELOPMENT

client / project

**Bothwell Futures
 Bothwell Public Library
 Bothwell**



Feasibility Scheme		Plans as Proposed	
project No.	drawing No.	rev	scale
1258	1258-WD-02	A	1:100
		cad ref	date
			Feb. 2022

LBG WATERSTON
 Chartered Architects
 Conservation Architects

ZAMEK HOUSE
 20 Old Bothwell Road
 Bothwell
 Glasgow
 G71 8AW

tel no 01698 854551
 fax no 01698 850110
 E Mail waterston1@aol.com