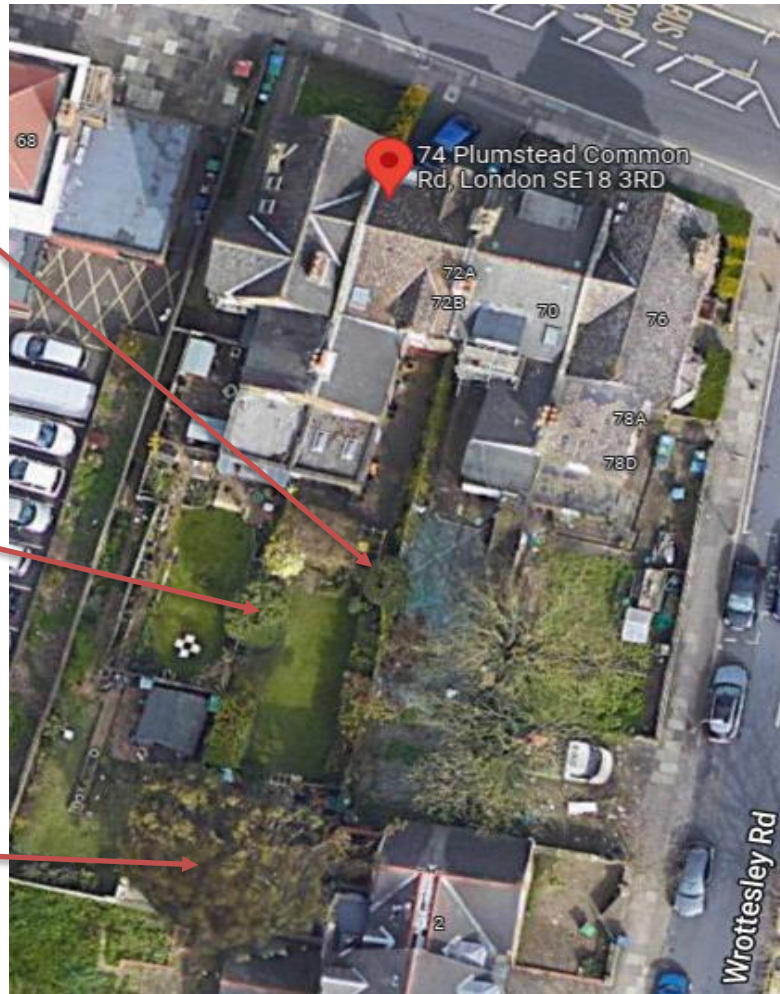


Sketch Plan  
74 Plumstead Common Road, SE18 3RD



**Statement of Work:**

**T1 Eucalyptus spp**

Rear boundary: Crown reduction - to reduce the overall height and radial spread of the canopy by approximately 4 metres (back to previous reduction point) cutting back to appropriate growing points where possible. To remove major deadwood.

**T2 Pittosporum Tenuifolium**

Rear RHB. Crown reduction - to reduce the overall height by up to 1.5 metres and to trim and shape the remaining canopy to create a tighter and more compact form.

**T3 Bay**

Crown reduction - to reduce the overall height of previous seasons regrowth and to trim and shape the remaining canopy to create a tighter and more compact form. To remove basal growth.