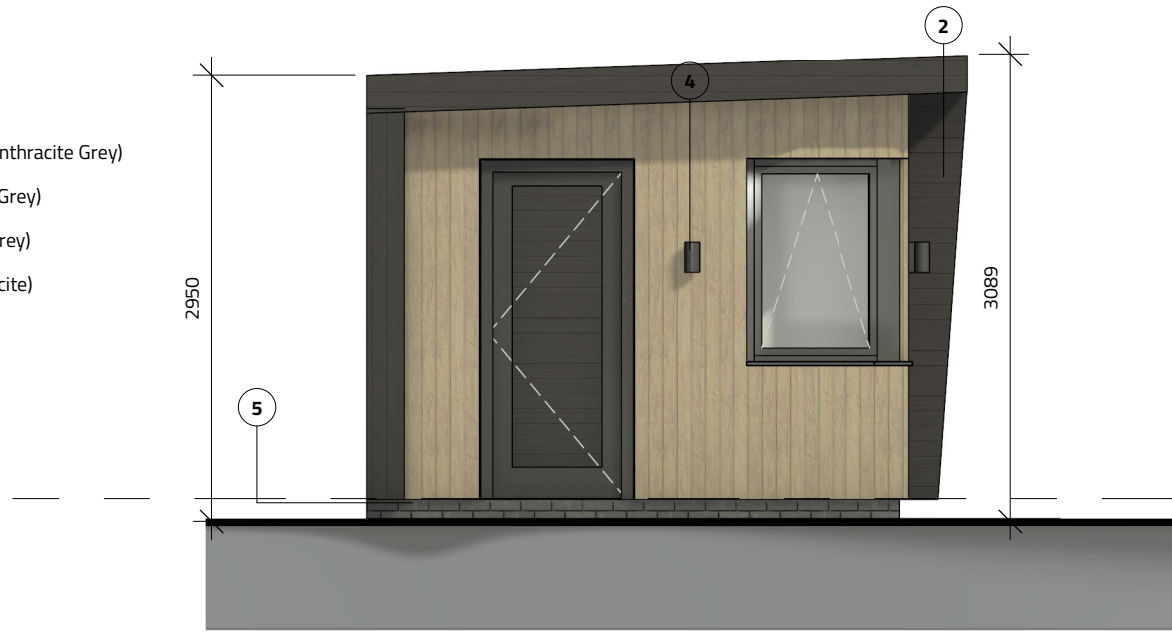


Proposed - Elevations

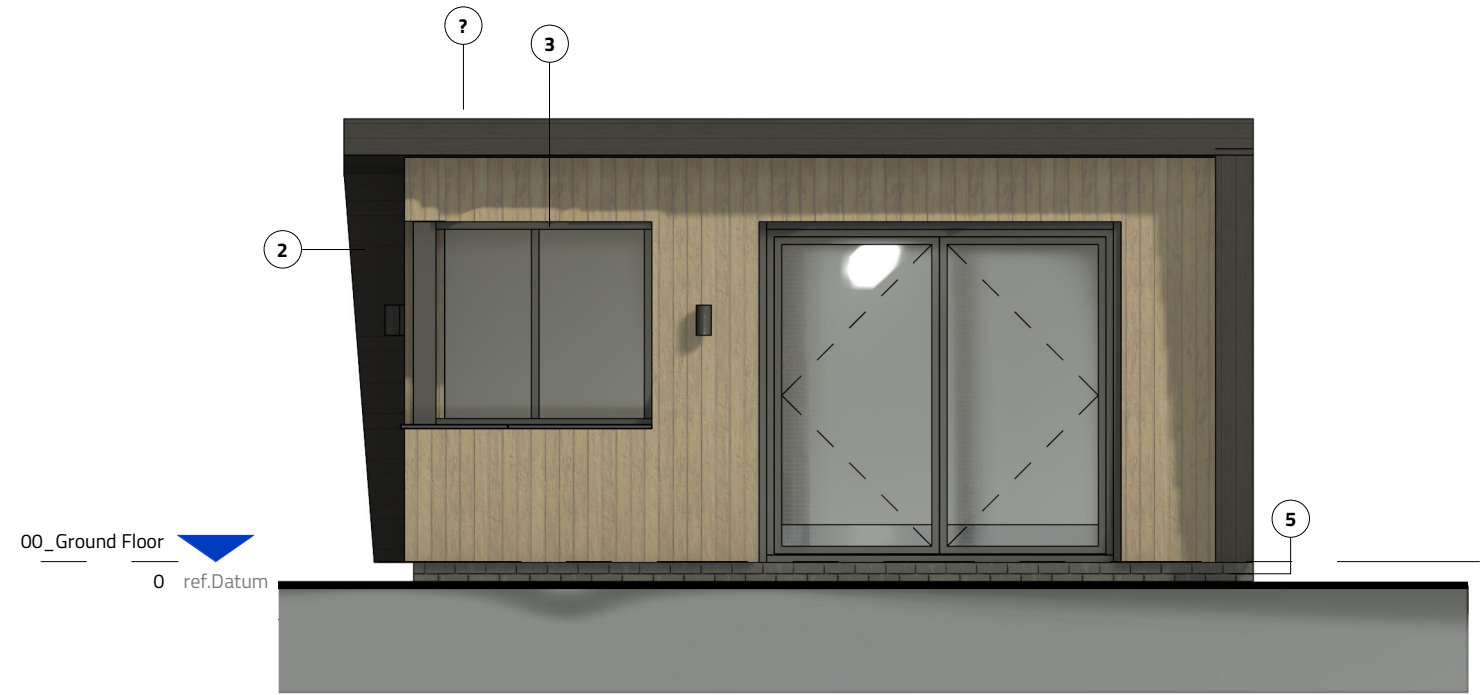
Material Key

- ① - Wood Cladding
- ② - Composite Cladding (Anthracite Grey)
- ③ - UPVC Doors/ Glazing (Grey)
- ④ - External Wall Lights (Grey)
- ⑤ - Brick slip base (Anthracite)



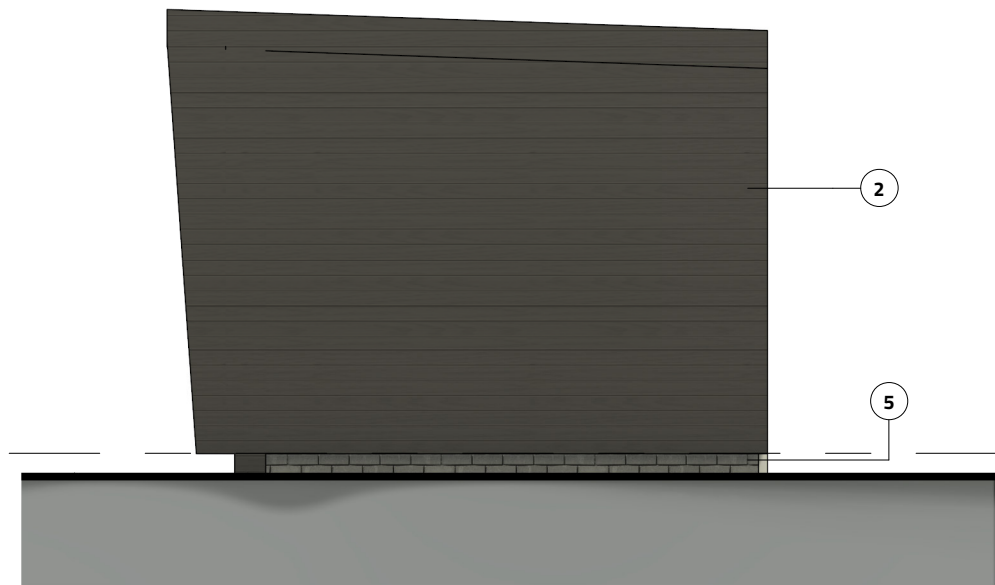
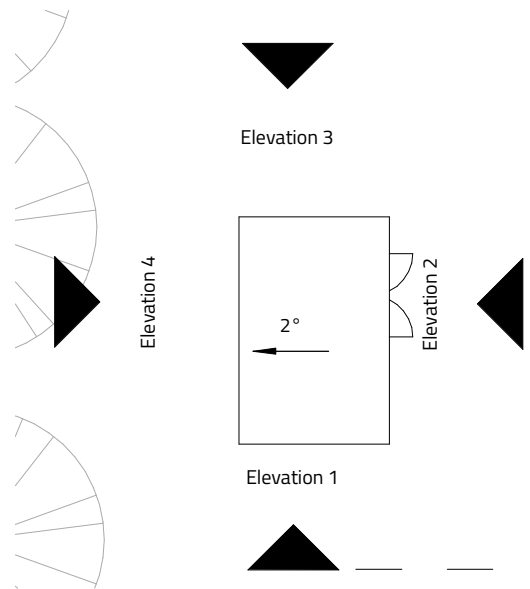
Elevation 1

1 : 50



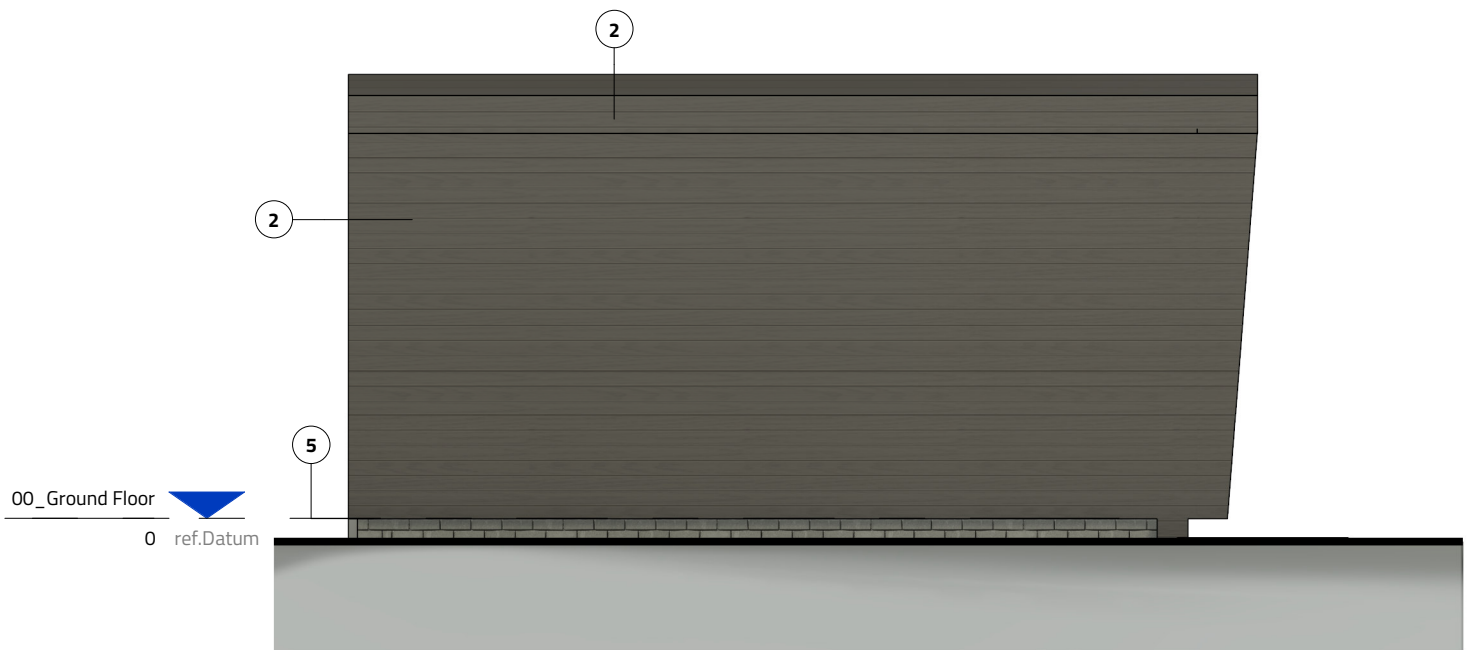
Elevation 2

1 : 50



Elevation 3

1 : 50



Elevation 4

1 : 50