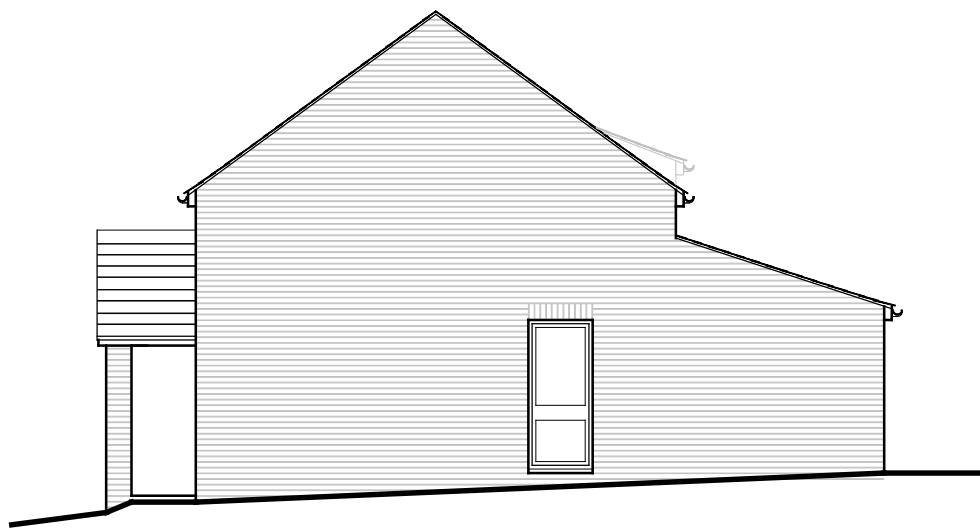


P R O P O S E D   G A R A G E   A L T E R A T I O N   T O   9   R A I L W A Y   S T R E E T .  
P L A N S   A N D   E L E V A T I O N S   O F   E X I S T I N G   P R O P E R T Y



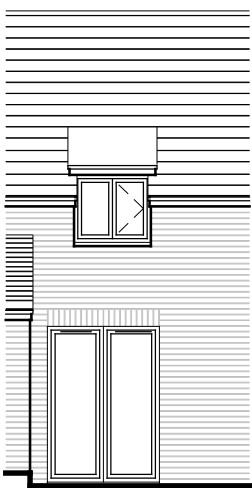
F R O N T   E L E V A T I O N



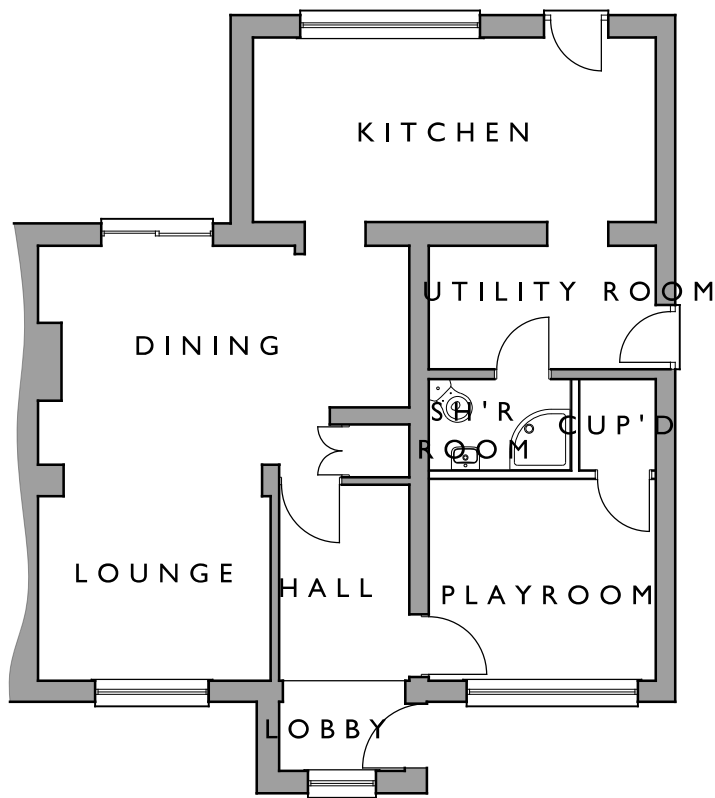
S I D E   E L E V A T I O N



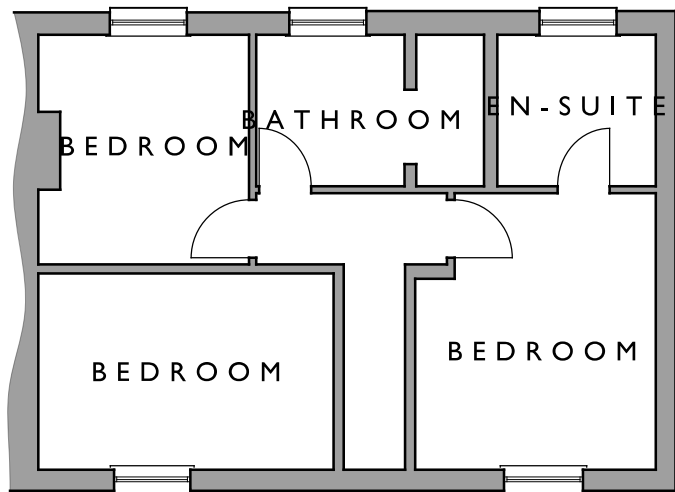
R E A R   E L E V A T I O N



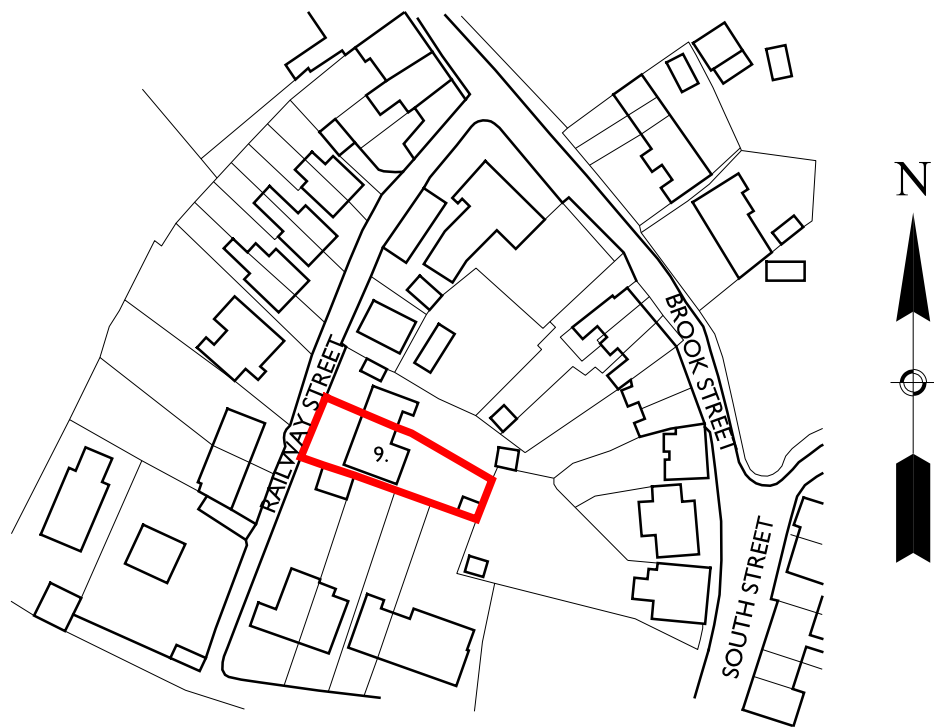
P A R T  
R E A R  
E L E V A T I O N



G R O U N D   F L O O R  
P L A N



F I R S T   F L O O R  
P L A N



L O C A T I O N   P L A N  
S C A L E 1 : 1 2 5 0

REVISIONS  
REV A - DRAWING UPDATED READY FOR PLANNING SUBMISSION - 22-04-2022

MRS J HOWARD  
9 RAILWAY STREET,  
MANNINGTREE,  
ESSEX, CO11 1DS

30TH MARCH 2022

DRAWING No:-

SCALE:- 1:50 @ A2

9RWS / P / 11 'A'

EXISTING PLAN AND  
ELEVATIONS

