

- 1

NEW GLAZED WIND LOBBY
ONE DOOR TO BE AUTOMATED WITH PUSH
PLATE. SOLID CEILING
- 2

NEW DEMOUNTABLE MERCHANDISE COUNTER
(BESPOKE JOINERY)
- 4

NEW BENCH SEAT WITHIN RECESS (BESPOKE
JOINERY)
- 5

CORRIDORS/DOOR OPENINGS LINED WITH
ACOUSTIC TIMBER LINING
- 6

NEW MAIN BAR AND CAFE (BESPOKE JOINERY)
- 7

NEW SHELVING UNIT FOR INTERMISSION
DRINKS (BESPOKE JOINERY) WITH LASER CUT
BRASS FACING
- 8

NEW REARRANGED STAIR
- 9

NEW PIPE GRID AND THEATRE TECH FIT-OUT
TO FORUM HALL. REFER TO THEATREPLAN
SPECIFICATION
- 10

NEW FORUM BAR (BESPOKE JOINERY)
- 11

NEW CHANGING PLACES WC
- 12

NEW CONNECTION TO TOWN HALL
- 13

NEW MEETING ROOMS (BOOKABLE)
- 14

EXISTING STAGE STRUCTURE REPLACED.
REFER TO SFK DRAWINGS.
- 15

NEW PORTAL FRAME STRUCTURE OVER STAGE.
REFER TO SFK DRAWINGS.
- 16

NEW GET IN LIFT. REFER TO THEATREPLAN
SPECIFICATION
- 17

NEW PLATFORM LIFT ON STAGE RIGHT SIDE
- 18

LOADING BAY RECONFIGURED TO PROVIDE
ACCESS FOR LONGER VEHICLES
- 19

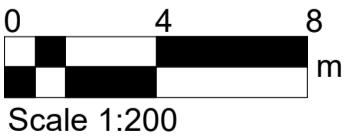
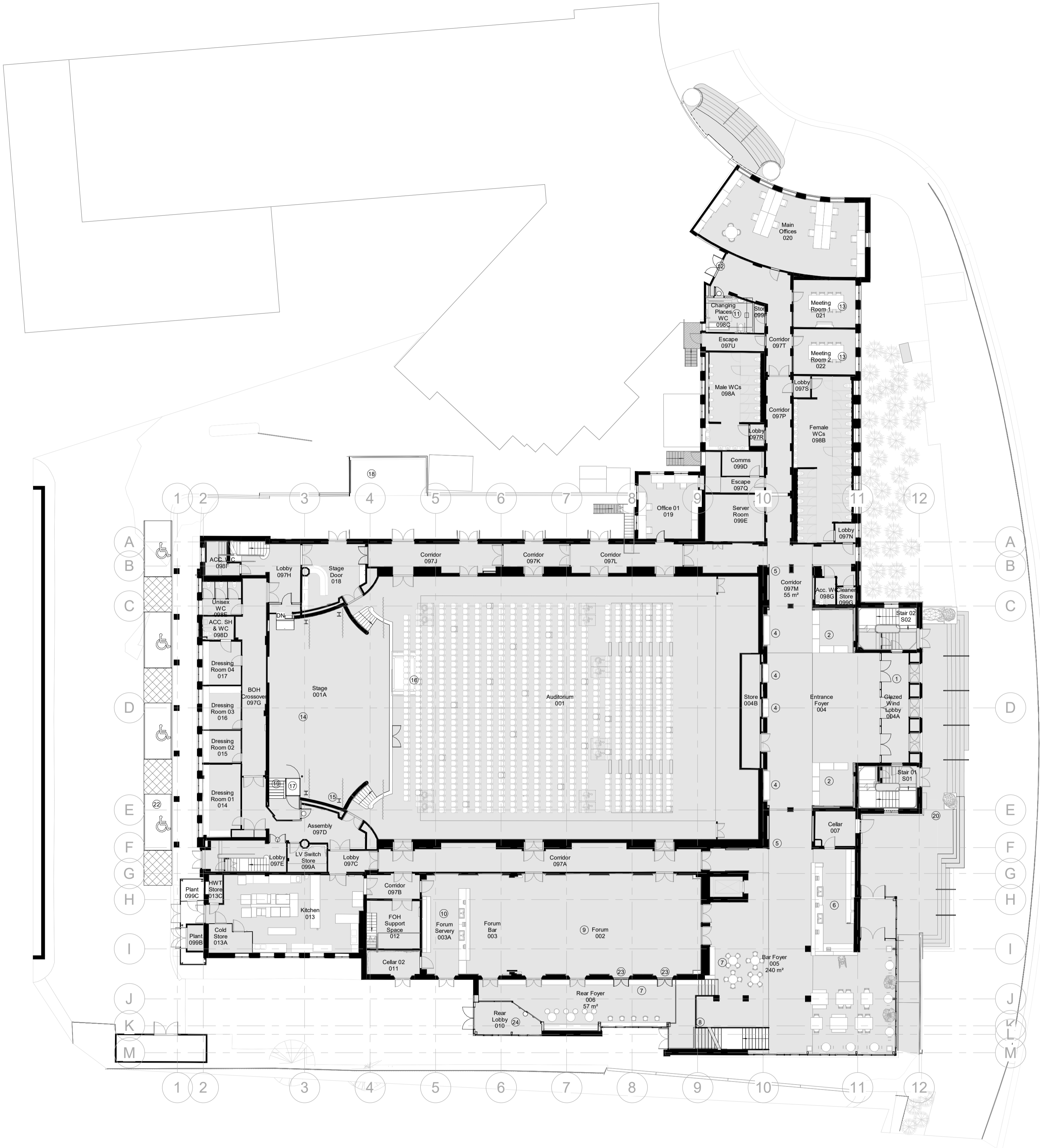
NEW STAIR, BALUSTRADE AND HANDRAILS
- 20

RECONFIGURED LANDSCAPING TO ALLOW
LEVEL ACCESS TO MAIN ENTRANCE
- 22

NEW ACCESSIBLE PARKING BAY
- 23

REINSTATE PREVIOUSLY BLOCKED UP
WINDOWS INTO THE FORUM
- 24

NEW DRAUGHT LOBBY TO REAR ENTRANCE
- PLEASE REFER TO OTHER CONSULTANT'S
INFORMATION ALONGSIDE THESE DRAWINGS
- N.B. Bold items impact upon Historic Fabric



PREVIOUSLY ISSUED AS DRAWING NUMBER 2000_P01

FelidenCleggBradleyStudios
LLP
Bath Office
Bath Brewery
Toll Bridge Road
Bath
BA1 7DE
t +44 1225 852545
e bath@fcbstudios.com

Rev	Status
P01	S3 Stage 3 - Client Review Issue 1
P02	S1 Drawing Issue for Coordination
P03	S2 Stage 3 - Costing
P04	S4 Stage 3 Submission
P05	D2 Tender Submission
P06	S2 Planning Submission Update

Date
19/01/2022
10/03/2022
21/03/2022
04/04/2022
13/04/2022
16/05/2022

Job/Drawing No	Revision
WTHC-FCBS-COL-00-DR-A-2050	P06
Watford Town Hall	Status
GA-Plan-Level00-THC	S2

Scale	1 : 200@A1	Drawn	Author	Checked	Checker	FCBS project no 2044
Date	08/10/21					

Do not scale

All dimensions to be checked on site