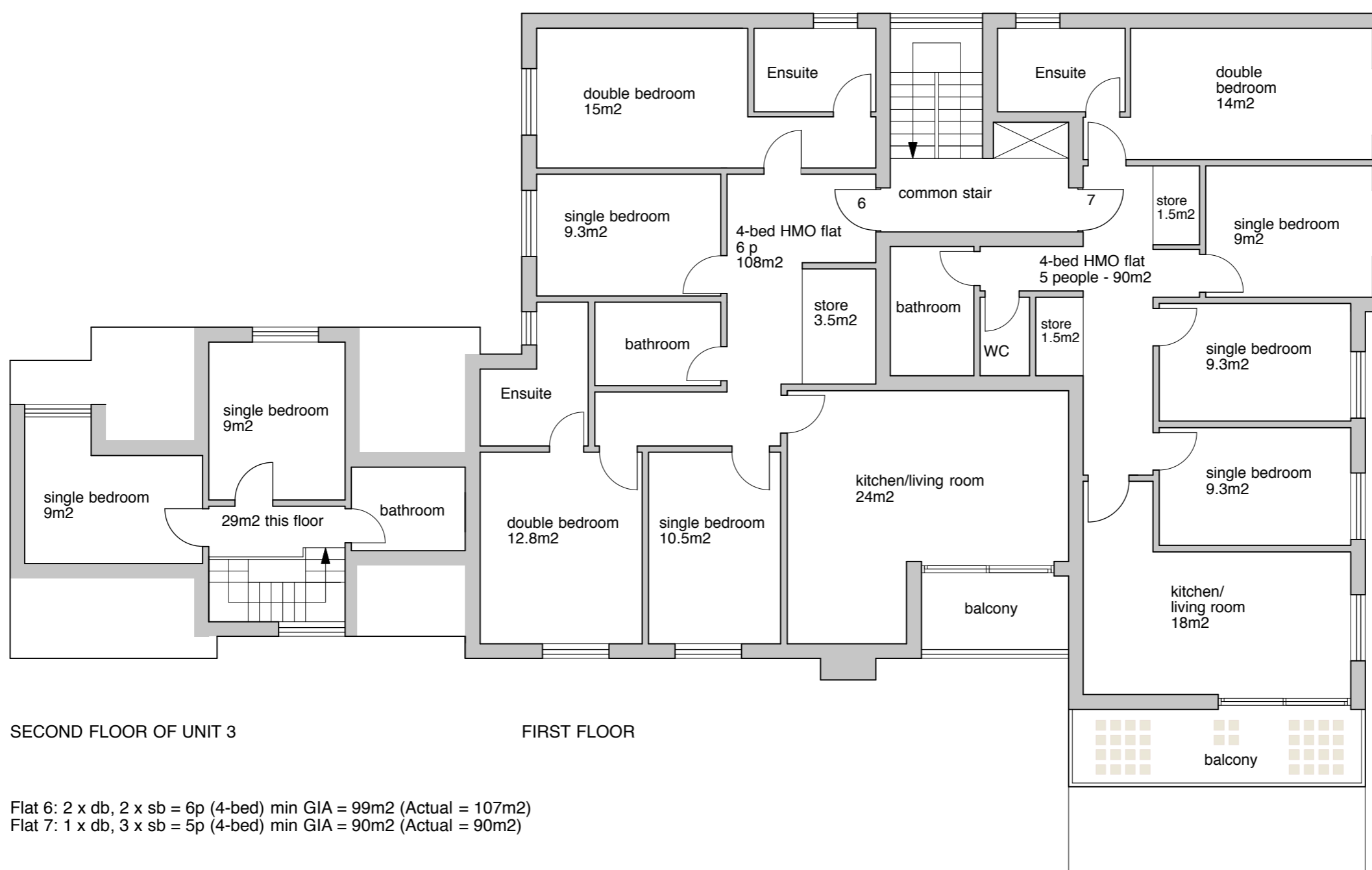


159 GIA

Flat 8: 2 x db = 4p (2-bed) min GIA = 70m2 (Actual = 70m2)
 Flat 9: 1 x db, 2 x sb = 4p (3-bed) min GIA = 74m2 (Actual = 75m2)



246 GIA

Flat 6: 2 x db, 2 x sb = 6p (4-bed) min GIA = 99m2 (Actual = 107m2)
 Flat 7: 1 x db, 3 x sb = 5p (4-bed) min GIA = 90m2 (Actual = 90m2)

