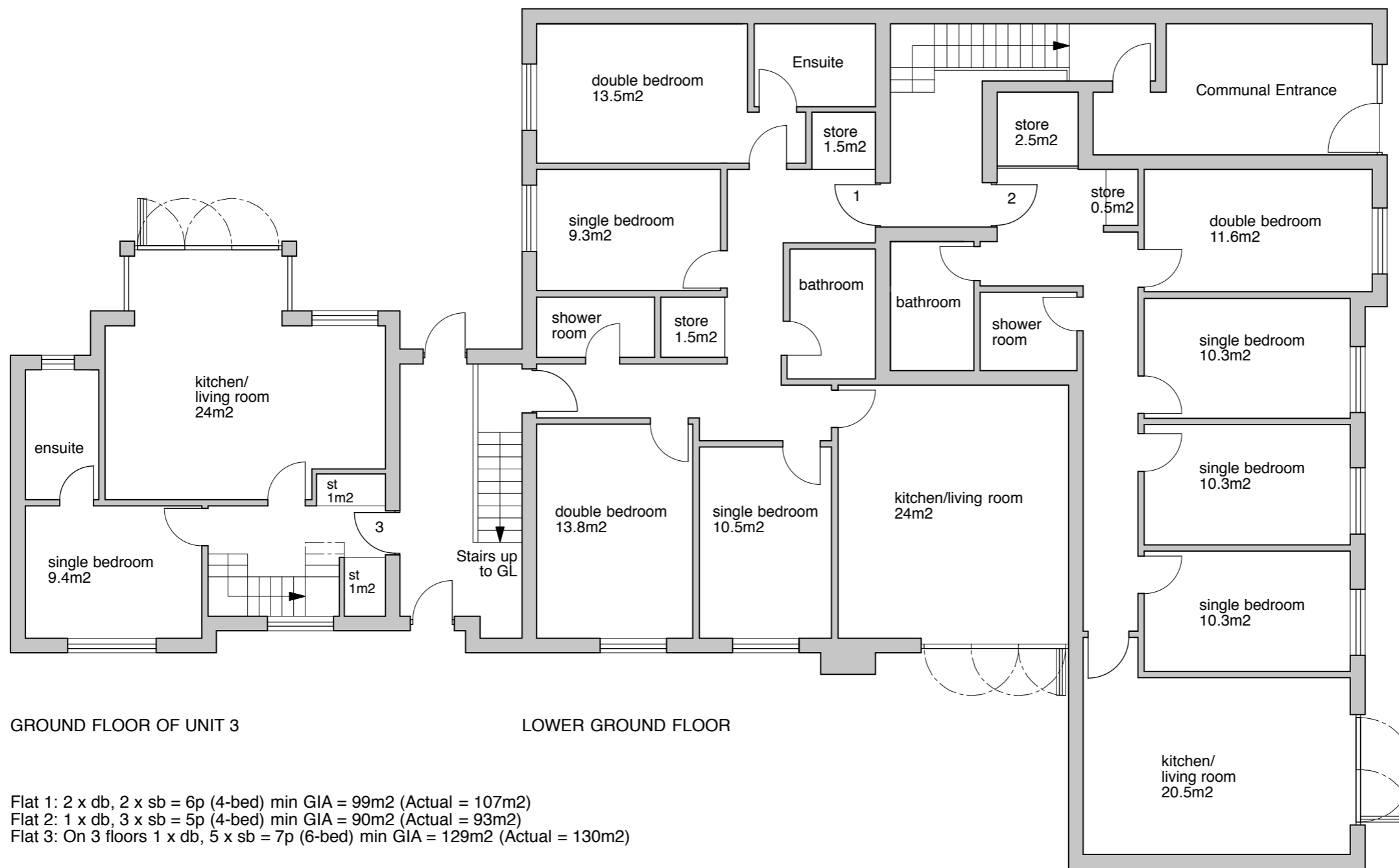


260 GIA

Flat 4: 2 x db, 2 x sb = 6p (4-bed) min GIA = 99m2 (Actual = 107m2)
 Flat 5: 1 x db, 2 x sb = 4p (3-bed) min GIA = 74m2 (Actual = 74.5m2)



299 GIA

Flat 1: 2 x db, 2 x sb = 6p (4-bed) min GIA = 99m2 (Actual = 107m2)
 Flat 2: 1 x db, 3 x sb = 5p (4-bed) min GIA = 90m2 (Actual = 93m2)
 Flat 3: On 3 floors 1 x db, 5 x sb = 7p (6-bed) min GIA = 129m2 (Actual = 130m2)

