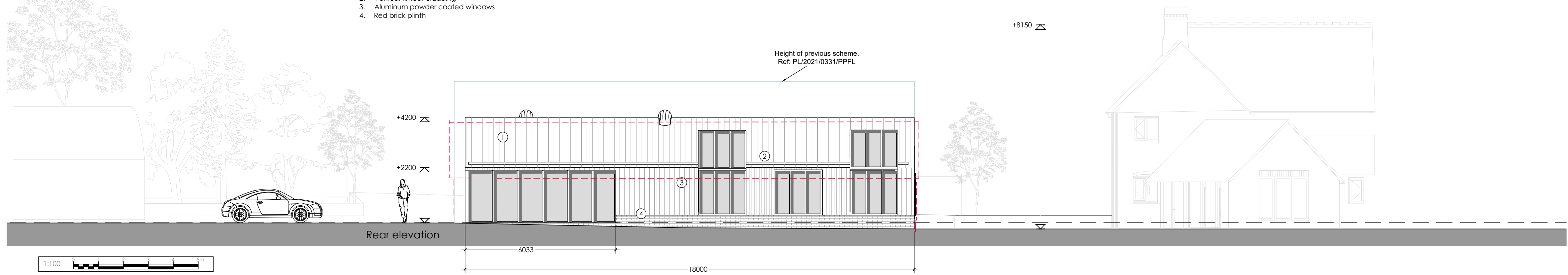


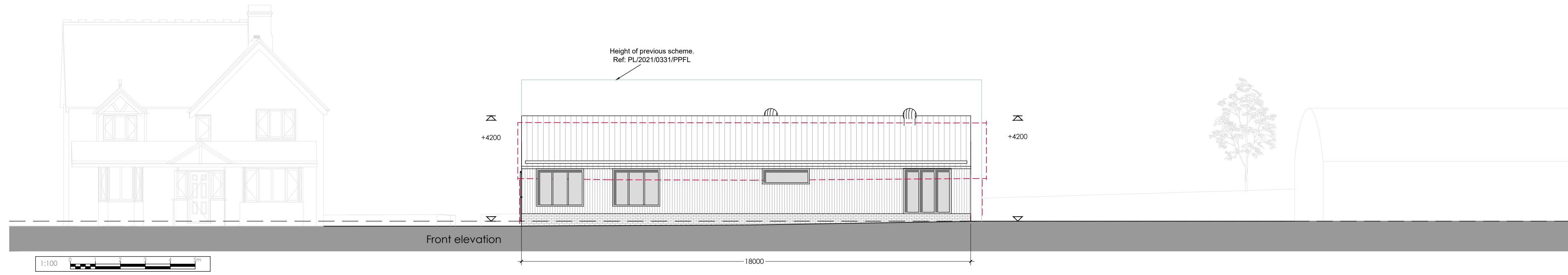
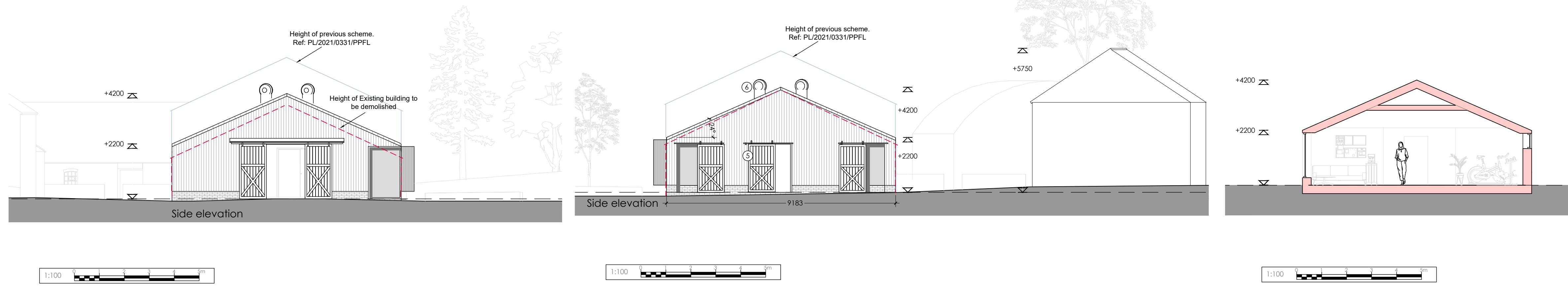
Materials:

1. Metal sheet roofing
2. Vertical timber cladding
3. Aluminum powder coated windows
4. Red brick plinth



Materials:

1. Metal sheet roofing
2. Vertical timber cladding
3. Aluminum powder coated windows
4. Red brick plinth
5. Sliding timber hardwood doors
6. Aluminum wind catchers



2022/04/20 - P1 - Lowering roof height and removal of mezzanine level following planning decision notice - BF

Revision Notes:

Drawing Status:

PLANNING



Pera Business Park, Nottingham Road
Melton Mowbray, LE13 0PB

Telephone: 01664 563 288 Fax: 01664 563 360
E-Mail: info@hssparchitects.co.uk Web: www.hssparchitects.co.uk

- Project:
- Work from home space Annex
 - Pear Tree Farm, Meer End Road
 - Kenilworth
 - Fowler

Proposed Elevations

Scale:	Drawn:	Checked:	Date:
1:100	-BF	-JCB	- Apr 22
Drawing No:	Revision:		
8435 - 03 - 04P1	- P1		