

GENERAL NOTES

Do NOT scale from this drawing. Use dimensions illustrated only. All dimensions and levels are in millimeters. All dimensions and levels shall be verified on site before proceeding with works. The Architect must be notified of any discrepancy.

This drawing is the property of Stem Architects Ltd. Copyright is reserved by them and the drawing issued on the condition that it is not copied, reproduced, retained or disclosed to any unauthorised person, either wholly or in part without the consent in writing of Stem Architects Ltd

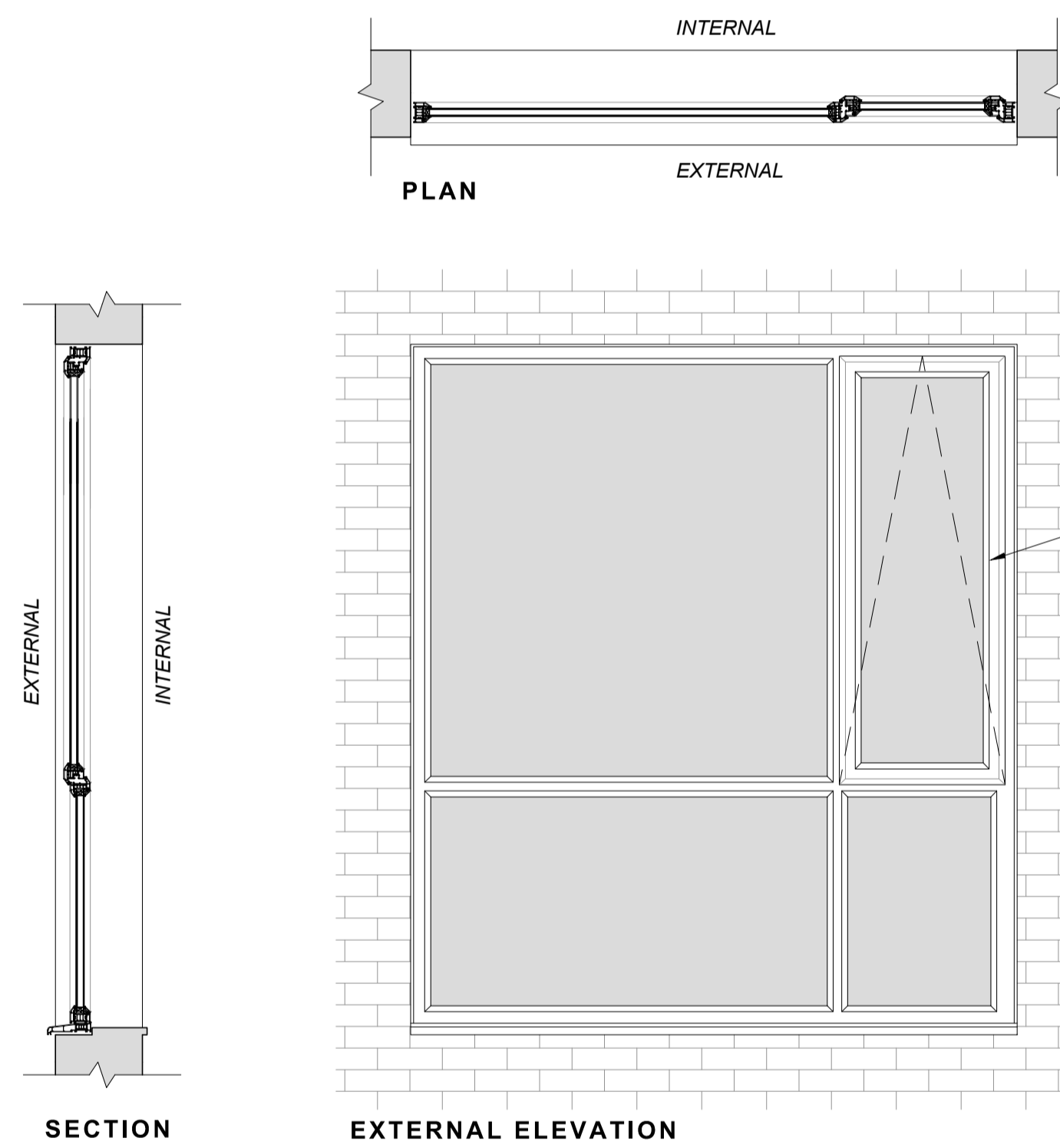


ELEVATION KEY 2 (WEST)
1:20 @ A1



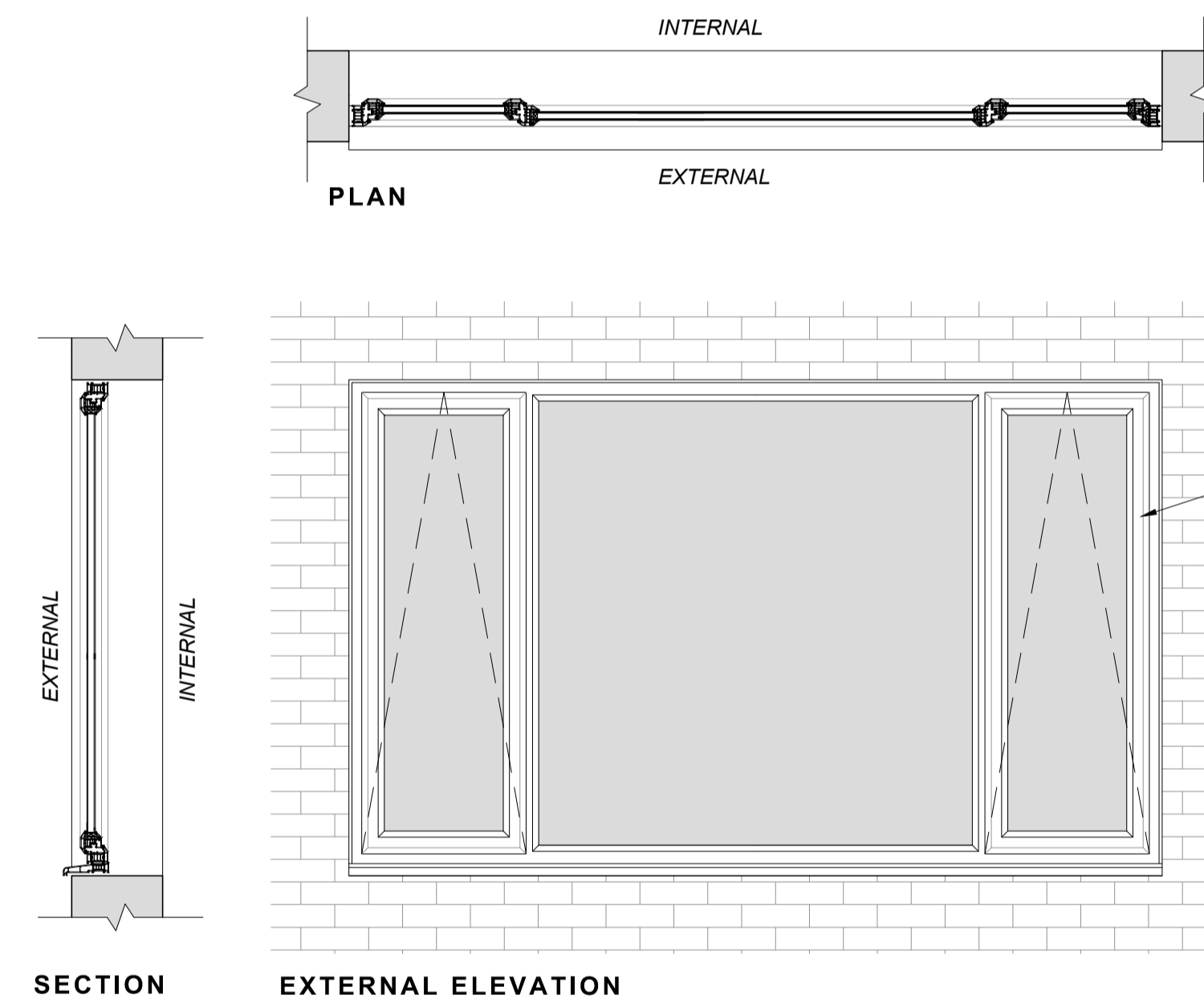
COLOUR GREEN GREY
RAL 7009

NOTE:
All new windows to include cable restrictors.



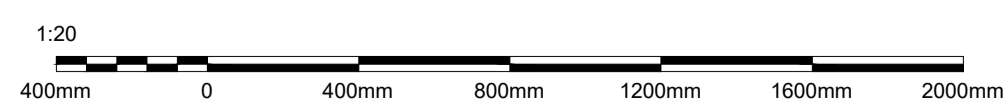
New aluminium framed 28mm thick double glazed unit with inward-opening top-hung casement. Frame colour Green Grey (RAL 7009)

WINDOW TYPE 6 DETAILS
1:20 @ A1



New aluminium framed 28mm thick double glazed unit with inward-opening top-hung casement. Frame colour Green Grey (RAL 7009)

WINDOW TYPE 7 DETAILS
1:20 @ A1



Description	Date	Drawn
Various minor amendments	25.04.22	DC

CLIENT Alford Library and Focal Point
ADDRESS 6 South Market Place
Alford
Lincolnshire LN13 9AF

Stem Architects Ltd
22 Brayford Wharf North
Lincoln
LN1 1BN
info@stemarchitects.co.uk
+44 (0)1522 515900
stemarchitects.co.uk
Lincoln Hull

PROJECT Alford Library and Focal Point
No. COM_576
DWG TITLE Window Details 02/ 02
DWG No. 3001 **REV** A
DRWN BY: DC **CHECKED BY:** BC
SCALE: A1 @ 1:20 **DATE:** 19.04.2020
STATUS: PLANNING