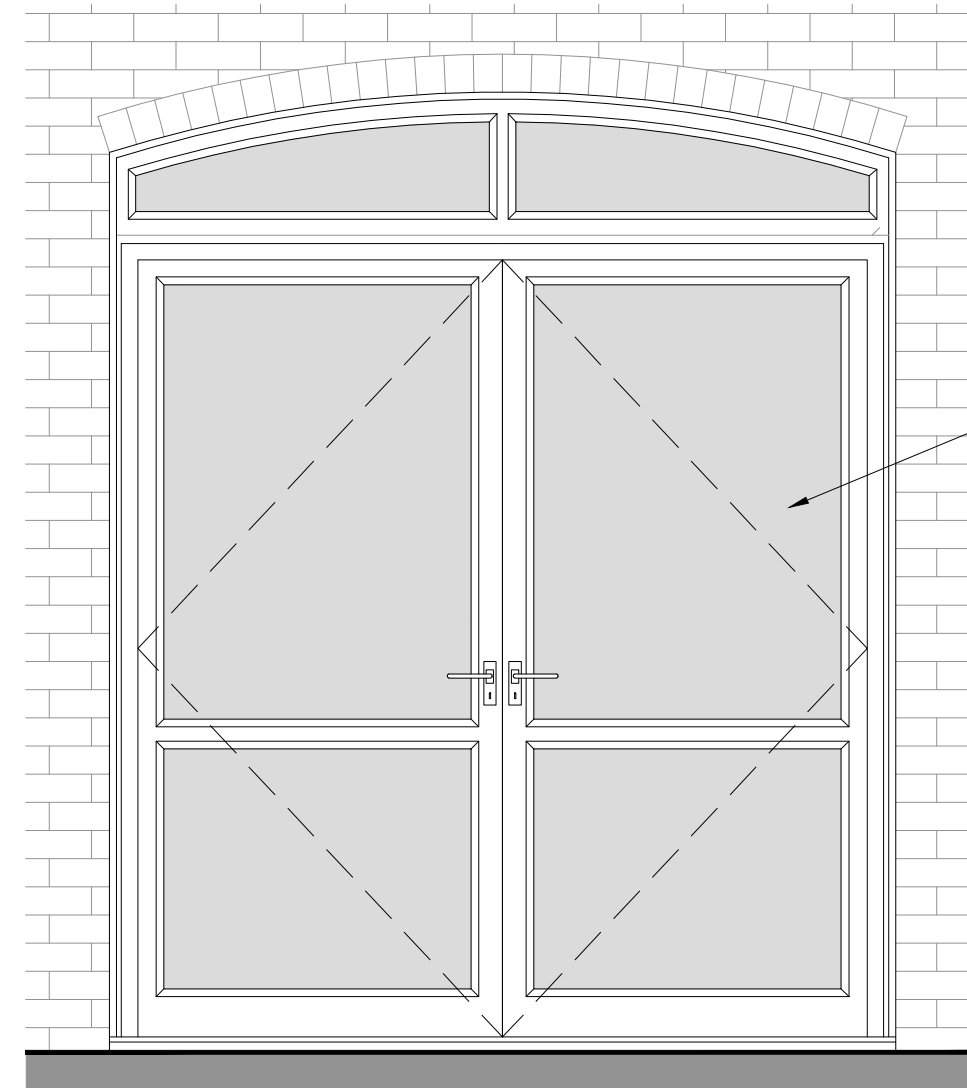
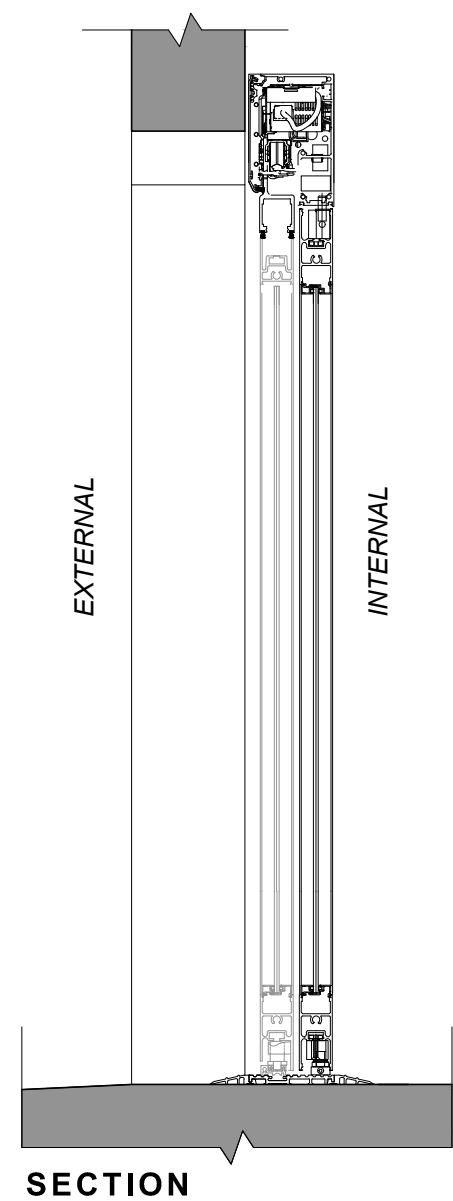
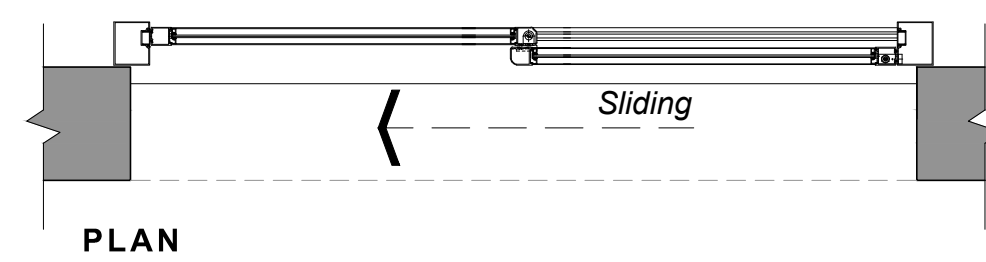


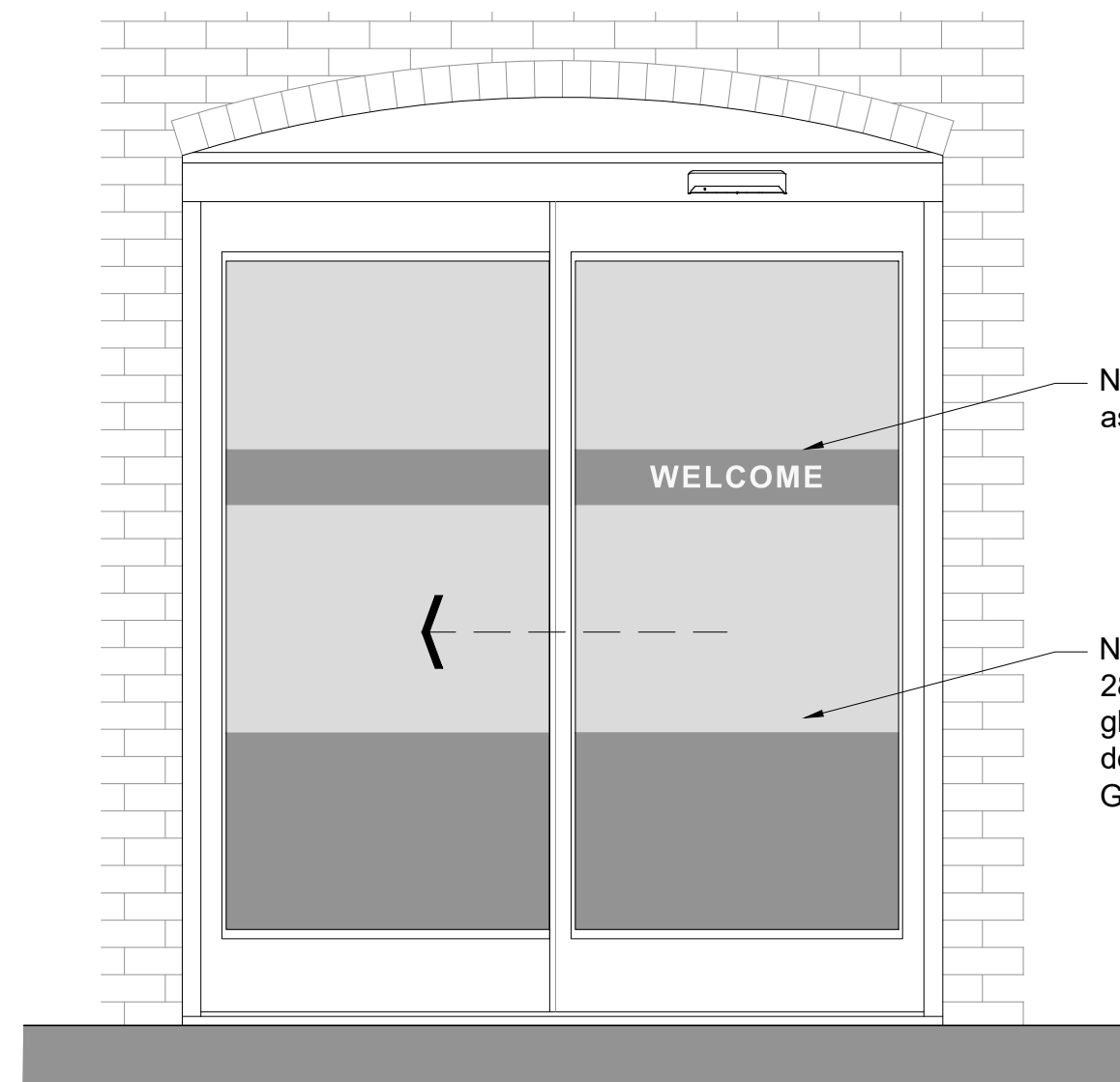
DOOR TYPE 1 DETAILS
1:20 @ A1



New aluminium framed 28mm thick double glazed double-door and window unit. Frame colour Green Grey (RAL 7009)

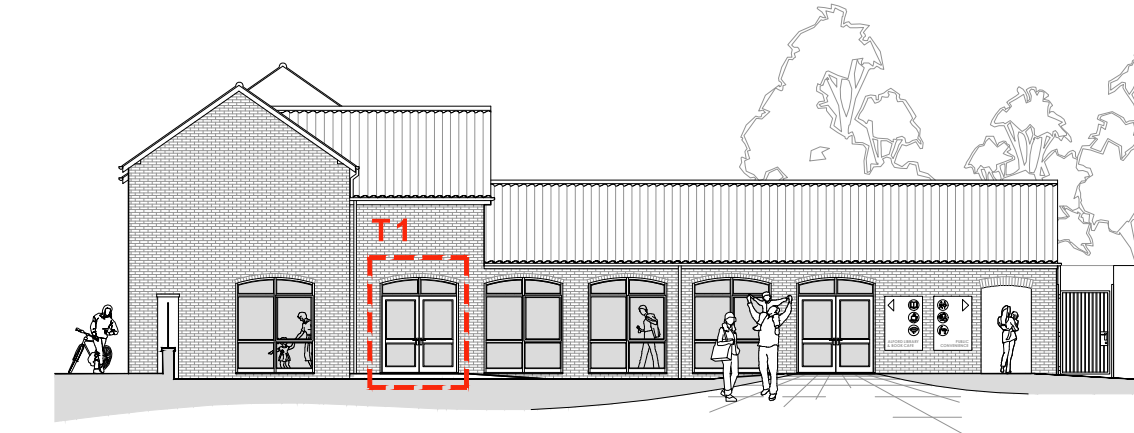


DOOR TYPE 2 DETAILS
1:20 @ A1

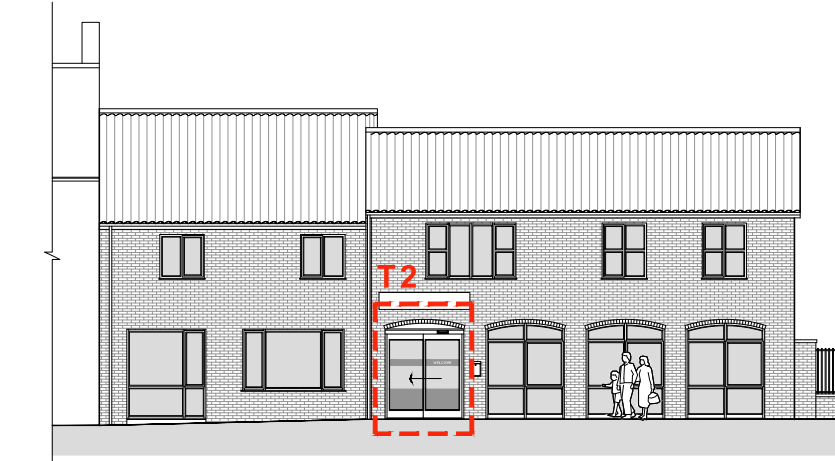


New vinyl manifestations as per AD Part K.

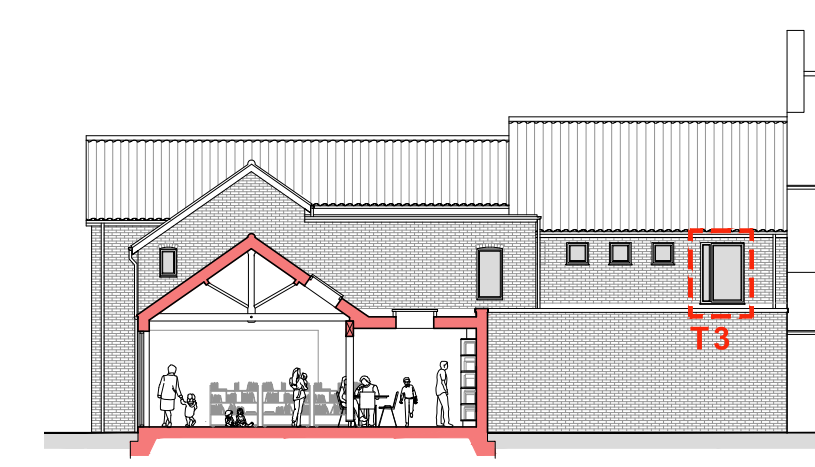
New aluminium framed 28mm thick double glazed automatic sliding door. Frame colour Green Grey (RAL 7009)



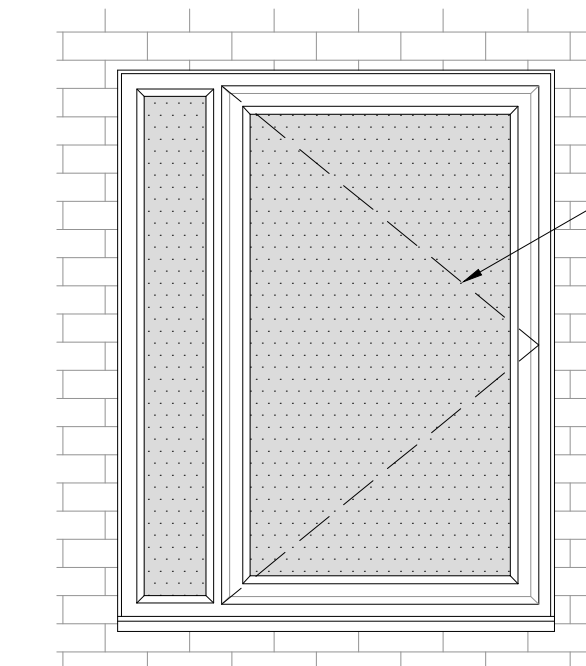
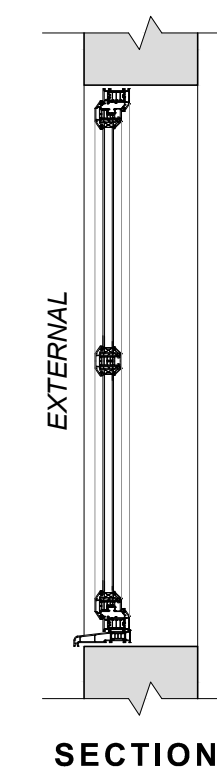
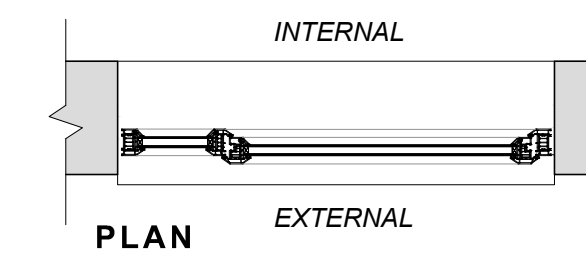
ELEVATION KEY 1 (SOUTH)
1:20 @ A1



ELEVATION KEY 2 (WEST)
1:20 @ A1



ELEVATION KEY 3 (EAST)
1:20 @ A1




New aluminium framed 28mm thick double glazed (obscure glazing) unit with opening side-hung casement (roof maintenance access only). Frame colour Green Grey (RAL 7009)

GENERAL NOTES
Do NOT scale from this drawing. Use dimensions illustrated only. All dimensions and levels are in millimeters. All dimensions and levels shall be verified on site before proceeding with works. The Architect must be notified of any discrepancy.
This drawing is the property of Stem Architects Ltd. Copyright is reserved by them and the drawing issued on the condition that it is not copied, reproduced, retained or disclosed to any unauthorised person, either wholly or in part without the consent in writing of Stem Architects Ltd



COLOUR GREEN GREY
RAL 7009

Description	Date	Drawn
CLIENT	Alford Library and Focal Point	
ADDRESS	6 South Market Place	
	Alford	
	Lincolnshire LN13 9AF	
 22 Brayford Wharf North Lincoln LN1 1BN info@stemarchitects.co.uk +44 (0)1522 515900 stemarchitects.co.uk Lincoln Hull		
PROJECT	Alford Library and Focal Point	
No.	COM_576	
DWG TITLE	External Door Details	
DWG No.	REV	
	3002	*
DRWN BY	DC	CHECKED BY: BC
SCALE	A1 @ 1:20	DATE 19.04.2020
STATUS: PLANNING		

