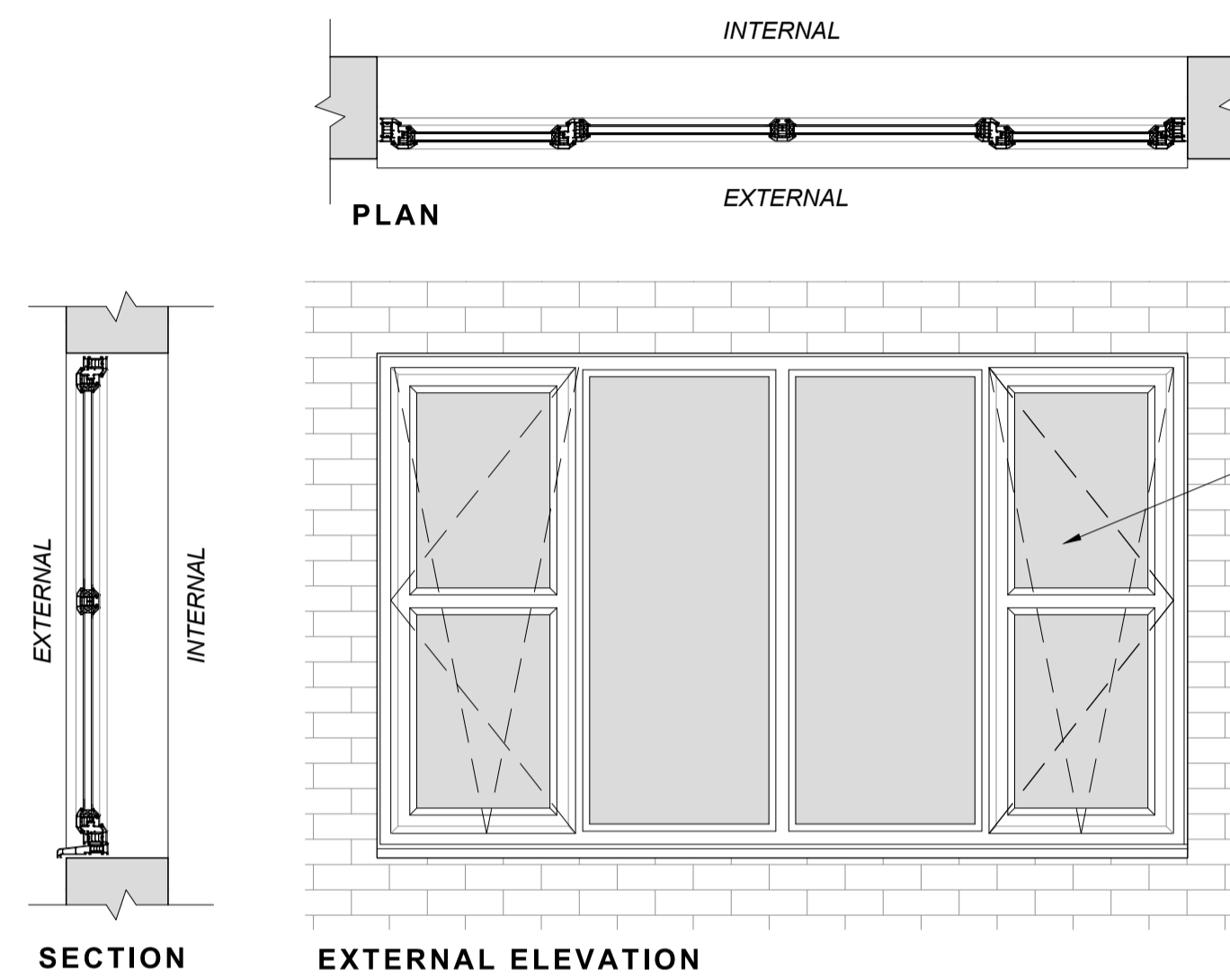


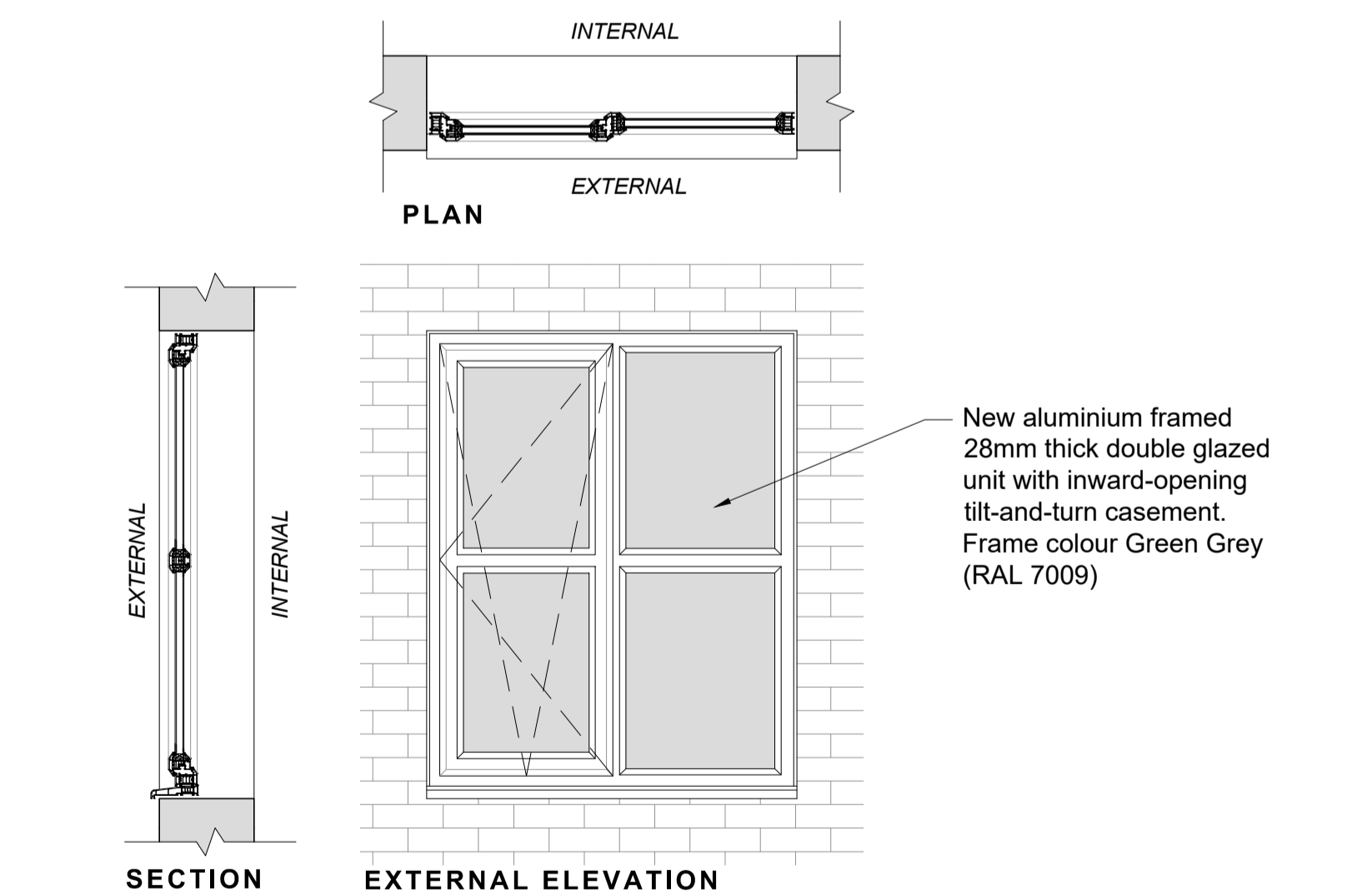
**WINDOW TYPE 1 DETAILS**  
1:20 @ A1

New aluminium framed 28mm thick double glazed unit with inward-opening top-hung casement. Frame colour Green Grey (RAL 7009)



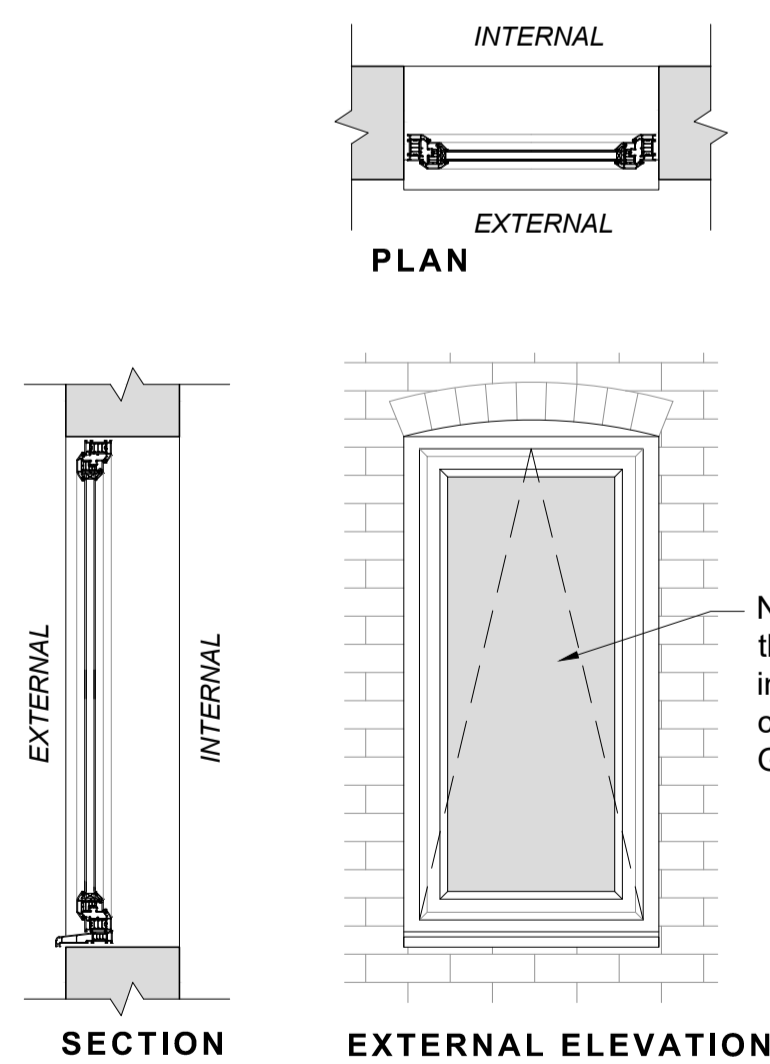
**WINDOW TYPE 2 DETAILS**  
1:20 @ A1

New aluminium framed 28mm thick double glazed unit with inward-opening tilt-and-turn casement. Frame colour Green Grey (RAL 7009)



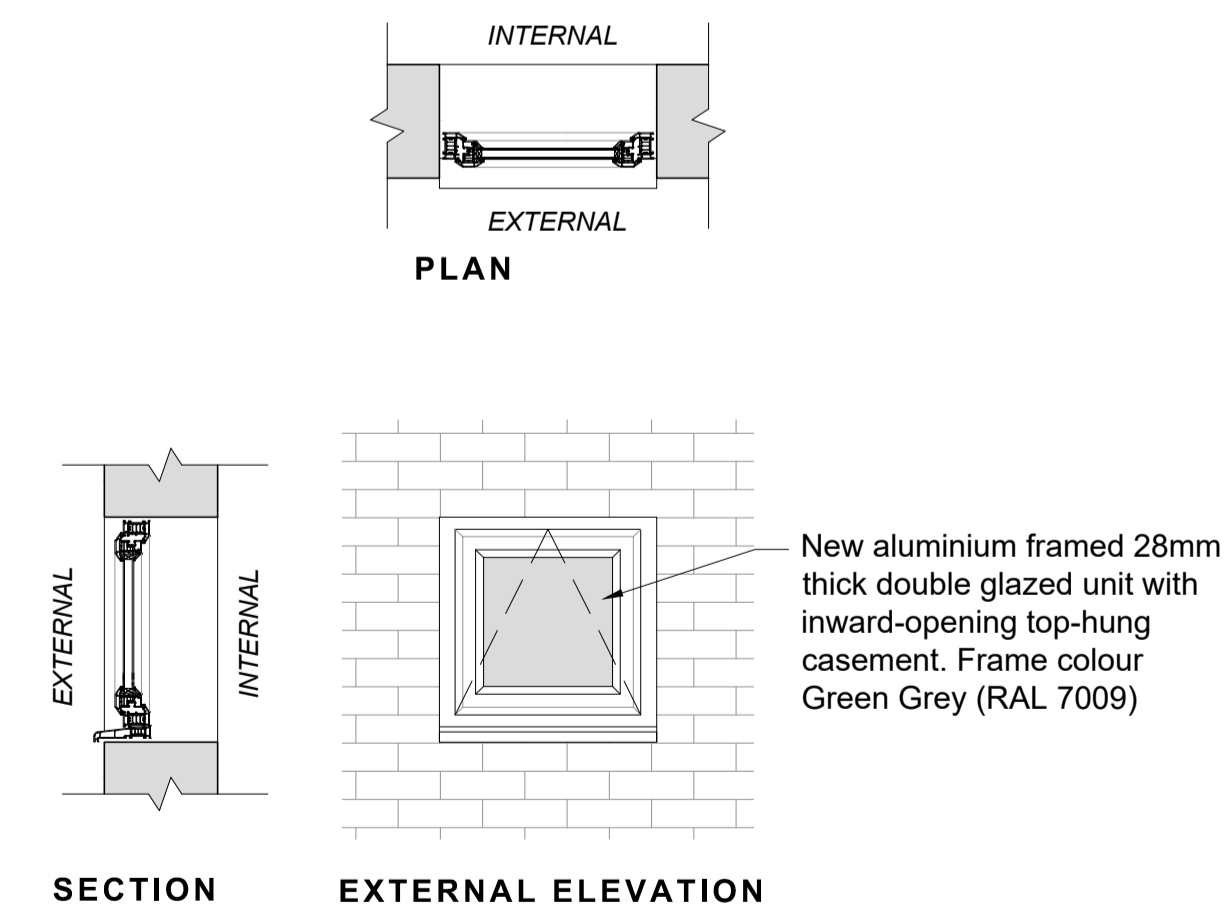
**WINDOW TYPE 3 DETAILS**  
1:20 @ A1

New aluminium framed 28mm thick double glazed unit with inward-opening tilt-and-turn casement. Frame colour Green Grey (RAL 7009)



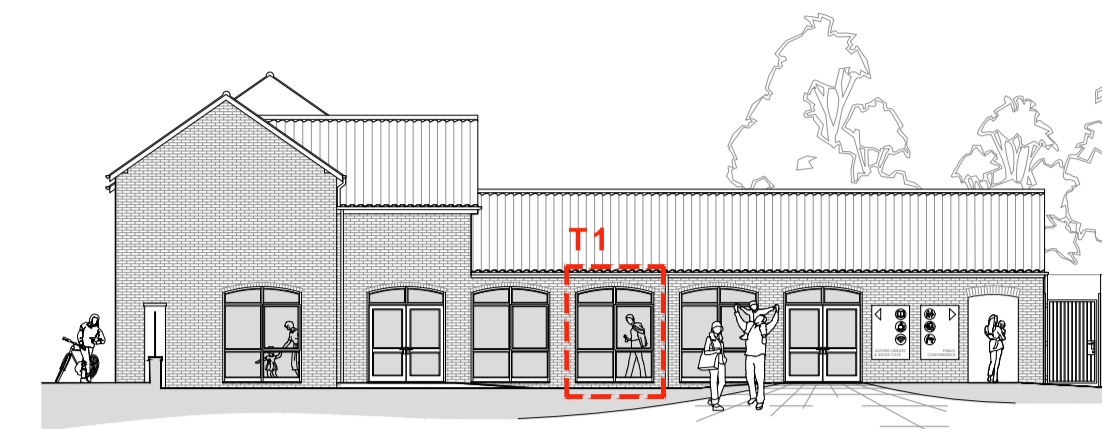
**WINDOW TYPE 4 DETAILS**  
1:20 @ A1

New aluminium framed 28mm thick double glazed unit with inward-opening top-hung casement. Frame colour Green Grey (RAL 7009)

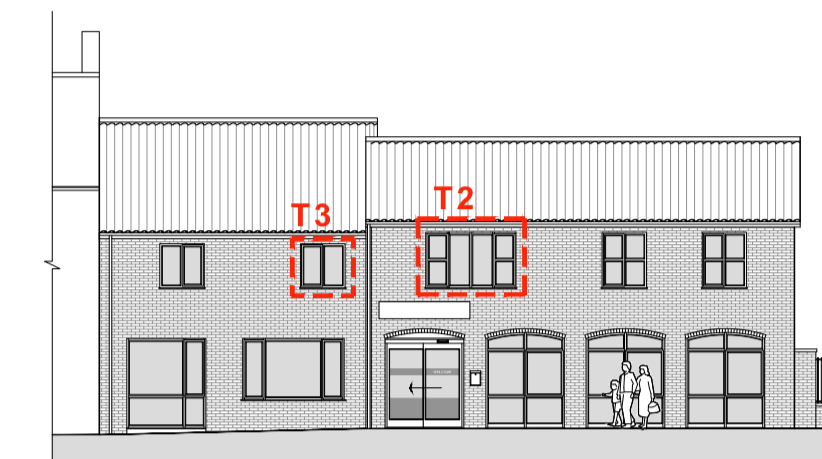


**WINDOW TYPE 5 DETAILS**  
1:20 @ A1

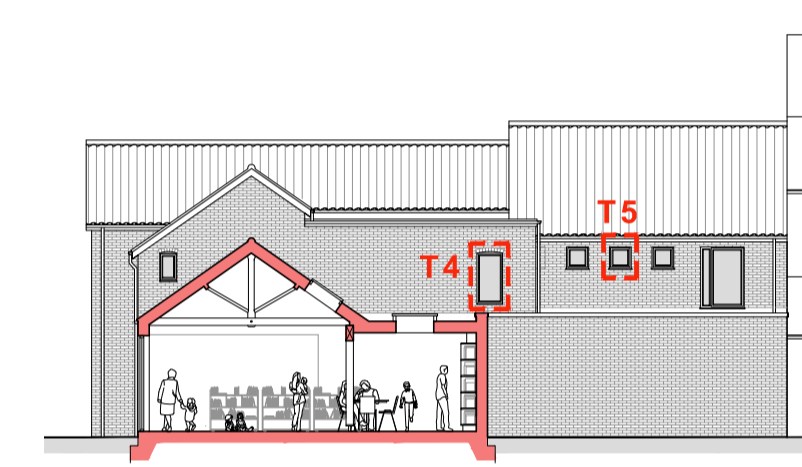
New aluminium framed 28mm thick double glazed unit with inward-opening top-hung casement. Frame colour Green Grey (RAL 7009)



**ELEVATION KEY 1 (SOUTH)**  
1:20 @ A1



**ELEVATION KEY 2 (WEST)**  
1:20 @ A1



**ELEVATION KEY 3 (EAST)**  
1:20 @ A1

**GENERAL NOTES**

Do NOT scale from this drawing. Use dimensions illustrated only. All dimensions and levels are in millimeters. All dimensions and levels shall be verified on site before proceeding with works. The Architect must be notified of any discrepancy.

This drawing is the property of Stem Architects Ltd. Copyright is reserved by them and the drawing issued on the condition that it is not copied, reproduced, retained or disclosed to any unauthorised person, either wholly or in part without the consent in writing of Stem Architects Ltd

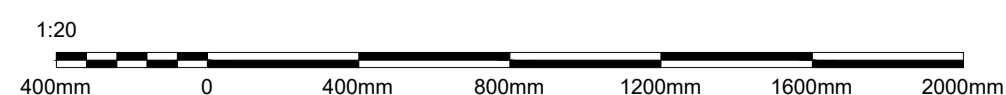


**COLOUR GREEN GREY**  
RAL 7009

**NOTE:**  
All new windows to include cable restrictors.



Above: precedent tilt-and-turn window



A	Various minor amendments	25.04.22	DC
Description		Date	Drawn

CLIENT **Alford Library and Focal Point**

ADDRESS **6 South Market Place**

**Alford**

**Lincolnshire LN13 9AF**

**stem Architects Ltd**  
22 Brayford Wharf North  
Lincoln  
LN1 1BN  
info@stemarchitects.co.uk  
+44 (0)1522 515900  
stemarchitects.co.uk

Lincoln Hull

PROJECT **Alford Library and Focal Point**

No. **COM\_576**

DWG TITLE **Window Details 01/02**

DWG No. **3000** REV **A**

DRWN BY **DC** CHECKED BY **BC**

SCALE **A1 @ 1:20** DATE **19.04.2020**

STATUS **PLANNING**