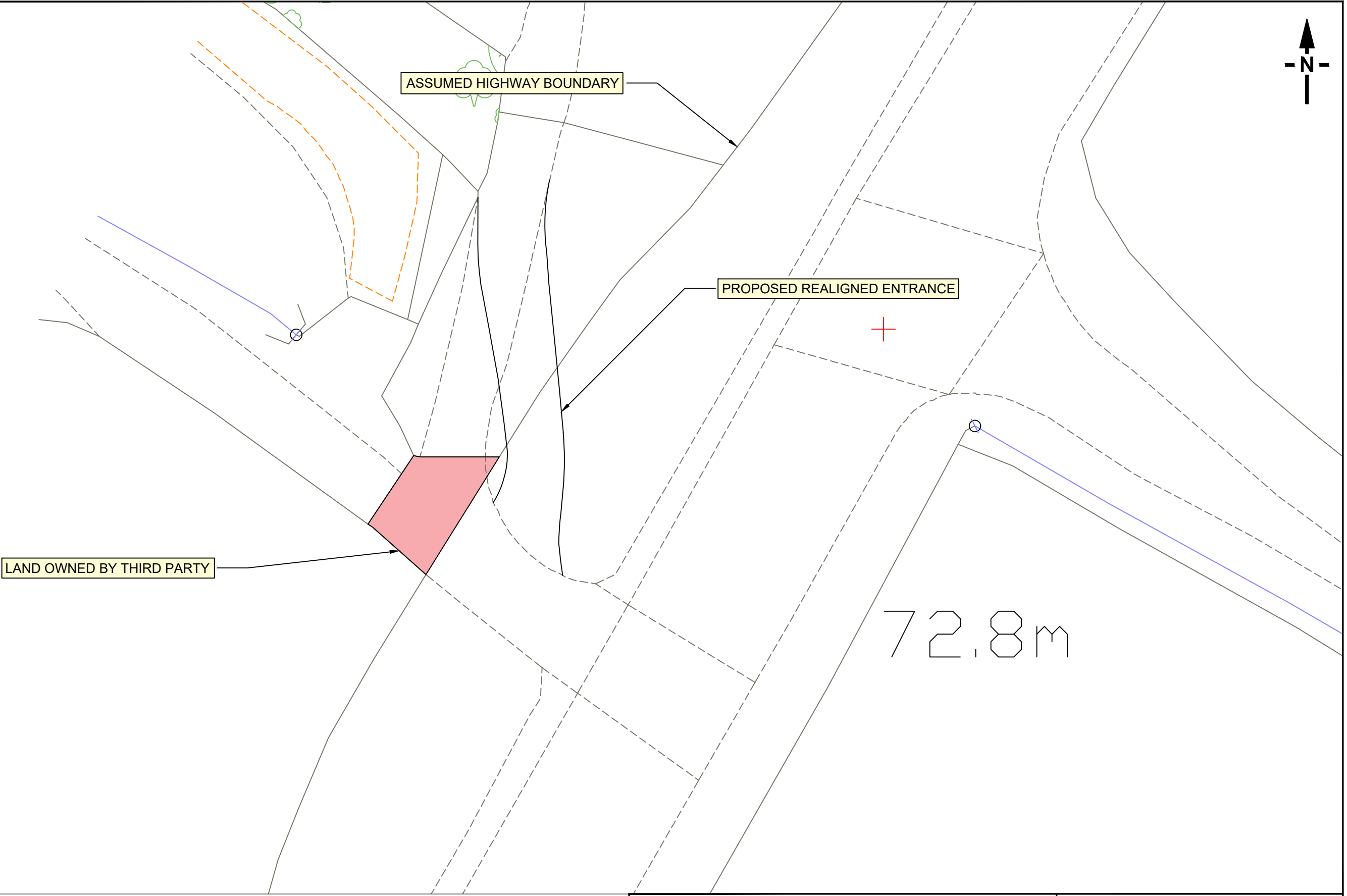
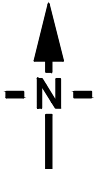



CAD FILE NAME : F:\DATA\Jobs\1166 Abbotts Way, Almondsbury\AutoCAD\1166-001_1166-002.dwg

NOTE THE PROPERTY OF THIS DRAWING AND DESIGN IS VESTED IN KEY TRANSPORT CONSULTANTS LIMITED AND MUST NOT BE COPIED OR REPRODUCED IN ANY WAY WITHOUT THEIR WRITTEN CONSENT



REV	DR	CH	PA	DATE

ABBOTTS WAY, ALMONDSBURY					
PROPOSED DRIVEWAY					
DRAWN BY	CHECKED BY	PASSED BY	DATE	SCALES @ A3 SIZE	ISSUE STATUS
VB	SM	SM	JAN 22	1:250@A3	PRELIMINARY

NEAL DAVIES	
	KEY TRANSPORT CONSULTANTS LTD 26 BERKELEY SQUARE BRISTOL BS8 1HP Tel : 0117 920 9430 E-mail : info@key-transport.com
DRAWING NUMBER	REV.
1166-001	