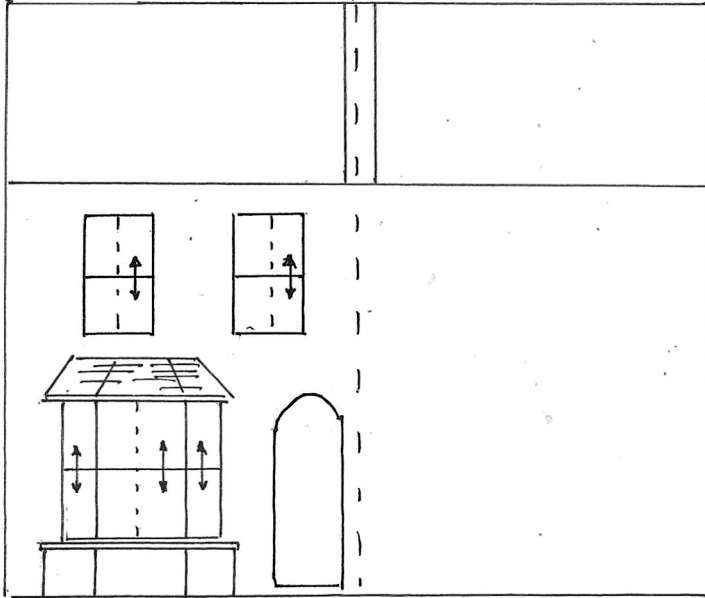


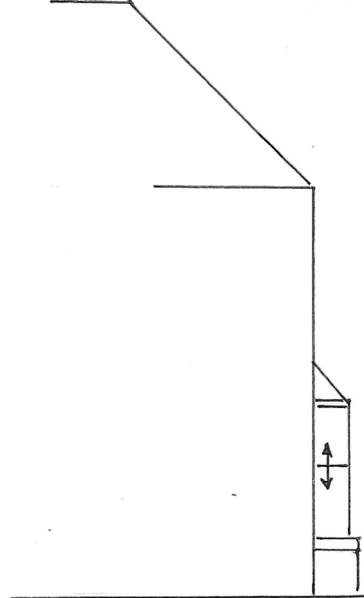
PROPOSED FRONT
ELEVATION
N° 170



N° 168



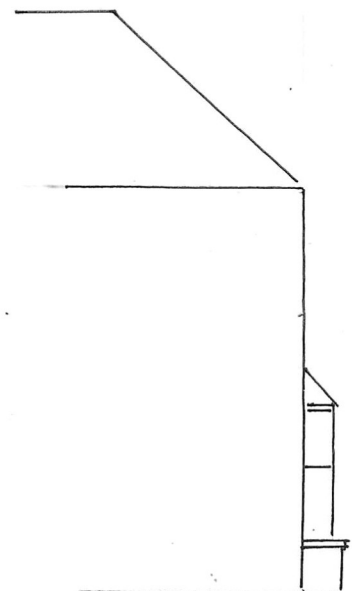
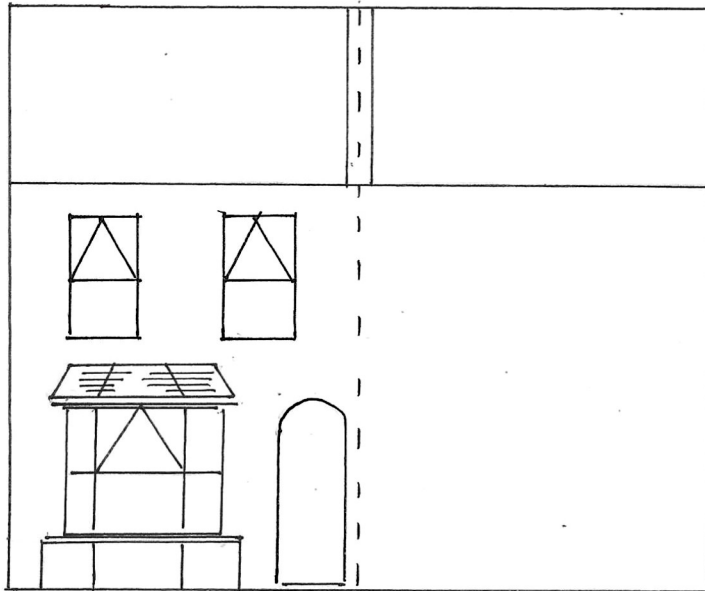
PROPOSED SIDE
ELEVATION



EXISTING
FRONT ELEVATION



EXISTING
SIDE ELEVATION



N° 170



N° 168

SCALE 1-100...



Technical Info

Our technical information section covers manufacturing limitations and detailed technical drawings. To most people the technical drawings don't make much sense, so if you have any questions our product experts will be more than happy to explain in more detail.

Technical Specifications

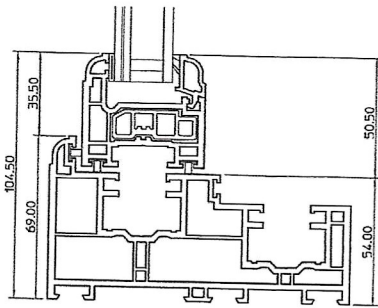
Front to back dimensions: 128mm
Glazing units: 24mm double glazed
U-value: 1.4W/m²K - 1.6W/m²K

Manufacturing Limitations

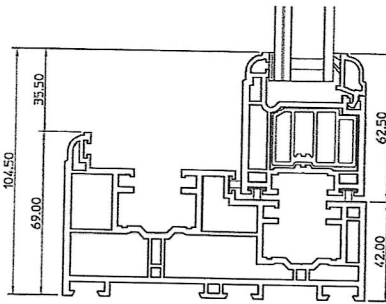
Minimum width: 360mm
Maximum width: 1500mm
Minimum height: 750mm
Maximum height: 2350mm

Technical Drawings

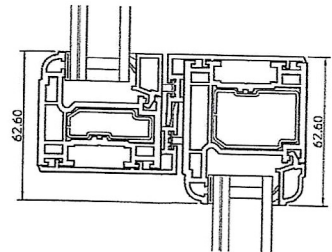
Main Profiles



Top Jamb

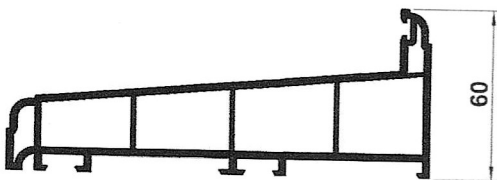


Bottom Jamb

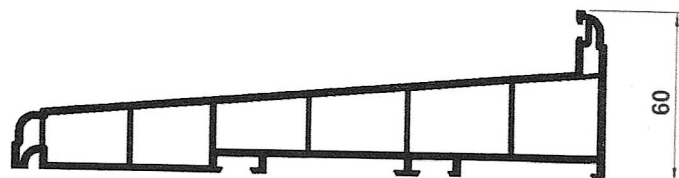


Meeting Rail

Sills

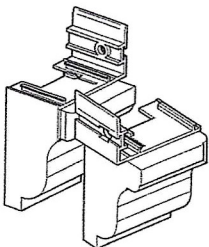


150mm Sill

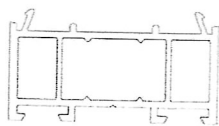


210mm Sill

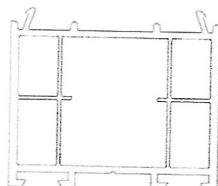
Ancillaries



Plant-on Sash Horn



30mm Add on



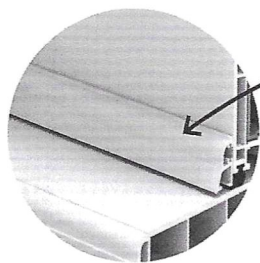
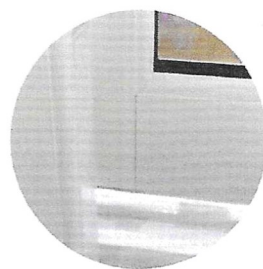
50mm Add on

Please note that some slide and tilt restrictions may apply on very large/small and bespoke shaped windows.



Deep Bottom Rail

Choose a deep bottom rail if you want your sliding sash windows to look as close to the original timber version as possible. The larger bottom rail sash convincingly mimics the timber sash windows of old. The deep bottom rail is available with welded or mechanical joints.



Weather Bar

The sash window boasts an innovative weather bar that not only offer authentic period aesthetics but also add another level of defense against rain and wind. The ovolo shaped weather bar replicates the sashes and outer frame, and is the latest of our design features, developed to create an authentic sash window appearance.