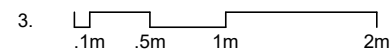


Notes

1. The architect retains copyright of this drawing. It should not be reproduced without prior written consent
2. Do not scale from this drawing, unless for PLANNING Project stage. Errors/omissions should be reported to the architect.



TENDER

Date of issue \ Project stage

06.04.22

Revisions

Job title

149 Kennington Park Road
London SE11 4JJ

Drawing title

Longitudinal section
Setting out

David Money Architects

Unit Z 23 Alphabet Mews London SW9 0FN
T/F: 020 7587 3584 E: studio@davidmoney.com

Job number Scale@A3 Drawing number

DM335 1:50 5.13.01



No. 147

No. 149 | No. 151

- new 3 pane timber side-hung external glazed doors
- new 3 pane timber sash window
- terminate render band 2 brick courses above new garden level

Notes

1. The architect retains copyright of this drawing. It should not be reproduced without prior written consent
2. Do not scale from this drawing, unless for PLANNING Project stage. Errors/omissions should be reported to the architect.
- 3.

TENDER

Date of issue \ Project stage

06.04.22

Revisions

Job title

149 Kennington Park Road
London SE11 4JJ

Drawing title

Rear elevation
Setting out

David Money Architects

Unit Z 23 Alphabet Mews London SW9 0FN
T/F: 020 7587 3584 E: studio@davidmoney.com

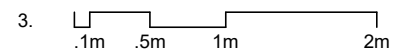
Job number Scale@A3 Drawing number

DM335 1:50 5.14.01



Notes

1. The architect retains copyright of this drawing. It should not be reproduced without prior written consent
2. Do not scale from this drawing, unless for PLANNING Project stage. Errors/omissions should be reported to the architect.



TENDER

Date of issue \ Project stage

06.04.22

Revisions

Job title

149 Kennington Park Road
 London SE11 4JJ

Drawing title

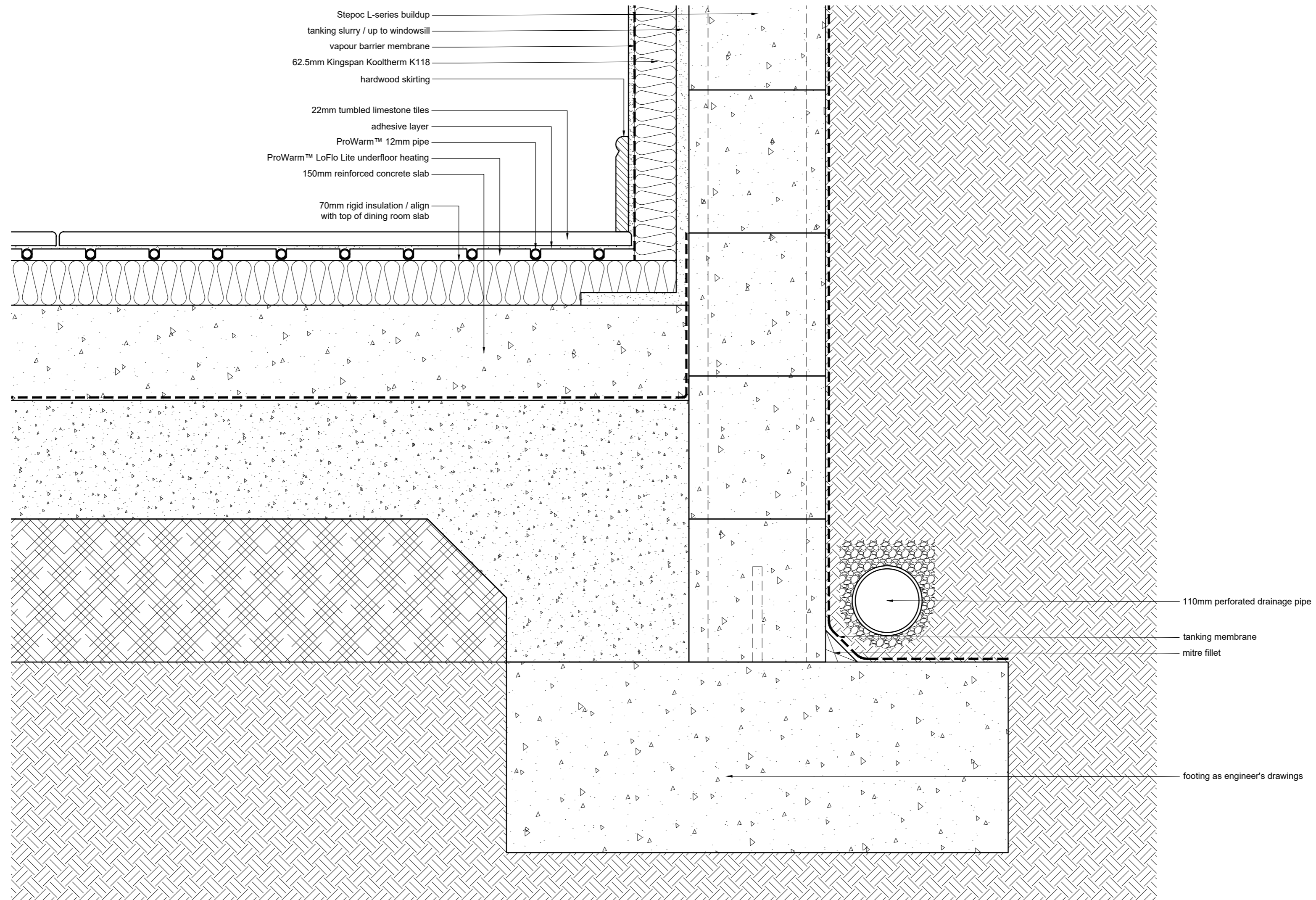
Front elevation
 Setting out

David Money Architects

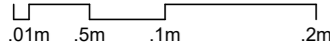
Unit Z 23 Alphabet Mews London SW9 0FN
 T/F: 020 7587 3584 E: studio@davidmoney.com

Job number Scale@A3 Drawing number

DM335 1:50 5.14.02



Notes

1. The architect retains copyright of this drawing. It should not be reproduced without prior written consent.
2. Do not scale from this drawing, unless for PLANNING Project stage. Errors / omissions should be reported to the architect.
3. 

TENDER

Date of issue \ Project stage

06.04.22

Revisions

Job title

149 Kennington Park Road
London SE11 4JJ

Drawing title

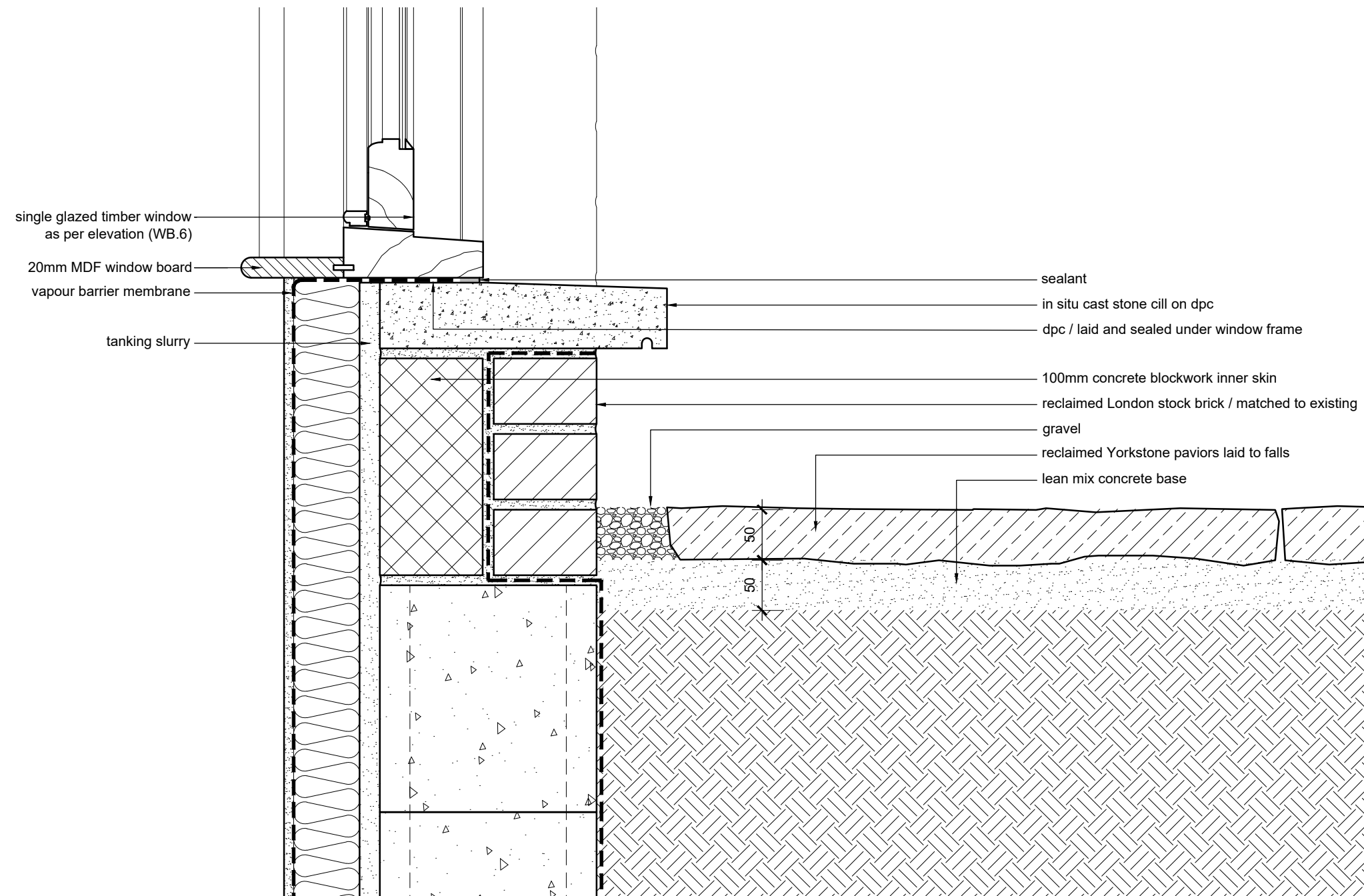
Study
Retaining wall detail

David Money Architects

Unit Z 23 Alphabet Mews London SW9 0FN
T/F: 020 7587 3584 E: studio@davidmoney.com

Job number Scale@A2 Drawing number

DM335 1:5 5.42.01



single glazed timber window
as per elevation (WB.6)

20mm MDF window board

vapour barrier membrane

tanking slurry

sealant

in situ cast stone cill on dpc

dpc / laid and sealed under window frame

100mm concrete blockwork inner skin

reclaimed London stock brick / matched to existing

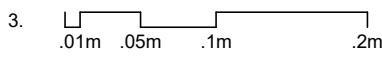
gravel

reclaimed Yorkstone paviors laid to falls

lean mix concrete base

Notes

1. The architect retains copyright of this drawing. It should not be reproduced without prior written consent
2. Do not scale from this drawing, unless for PLANNING Project stage. Errors/omissions should be reported to the architect.



TENDER

Date of issue \ Project stage
06.04.22

Revisions

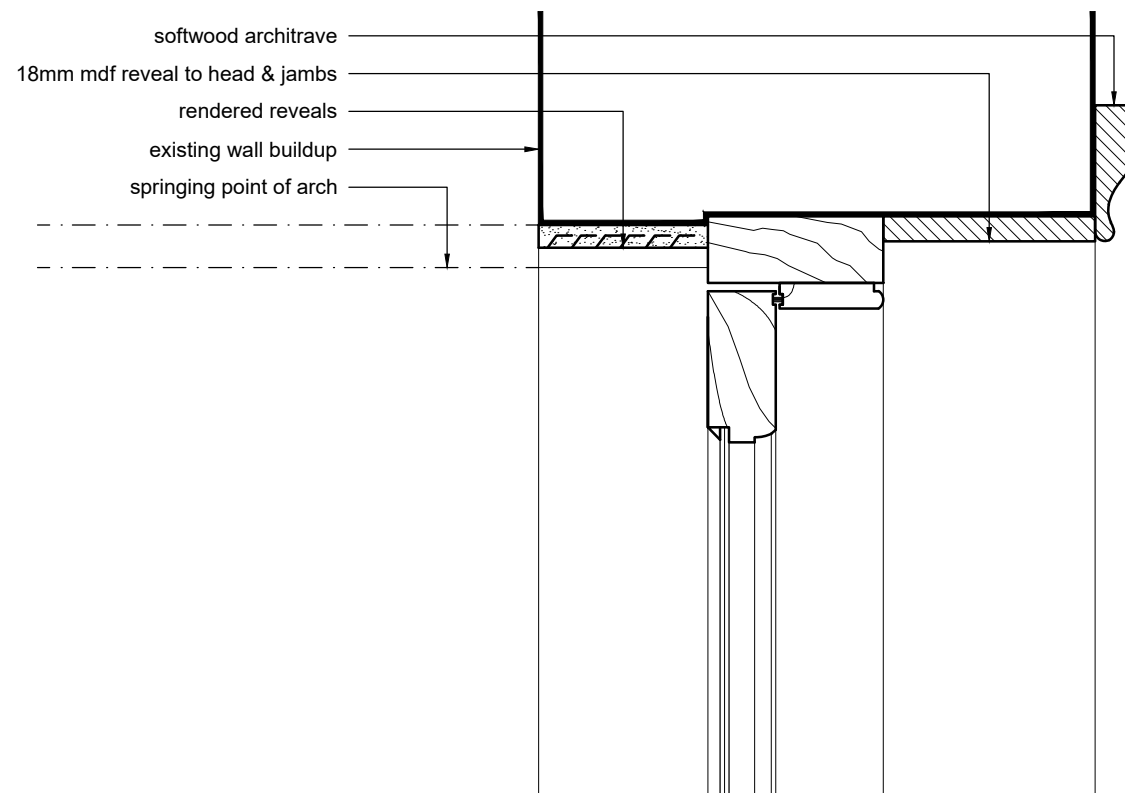
Job title
149 Kennington Park Road
London SE11 4JJ

Drawing title
Window sill
Roof detail

David Money Architects

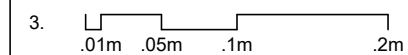
Unit Z 23 Alphabet Mews London SW9 0FN
T/F: 020 7587 3584 E: studio@davidmoney.com

Job number Scale@A3 Drawing number
DM335 1:5 5.42.02



Notes

1. The architect retains copyright of this drawing. It should not be reproduced without prior written consent.
2. Do not scale from this drawing, unless for PLANNING project stage. Errors / omissions should be reported to the architect.



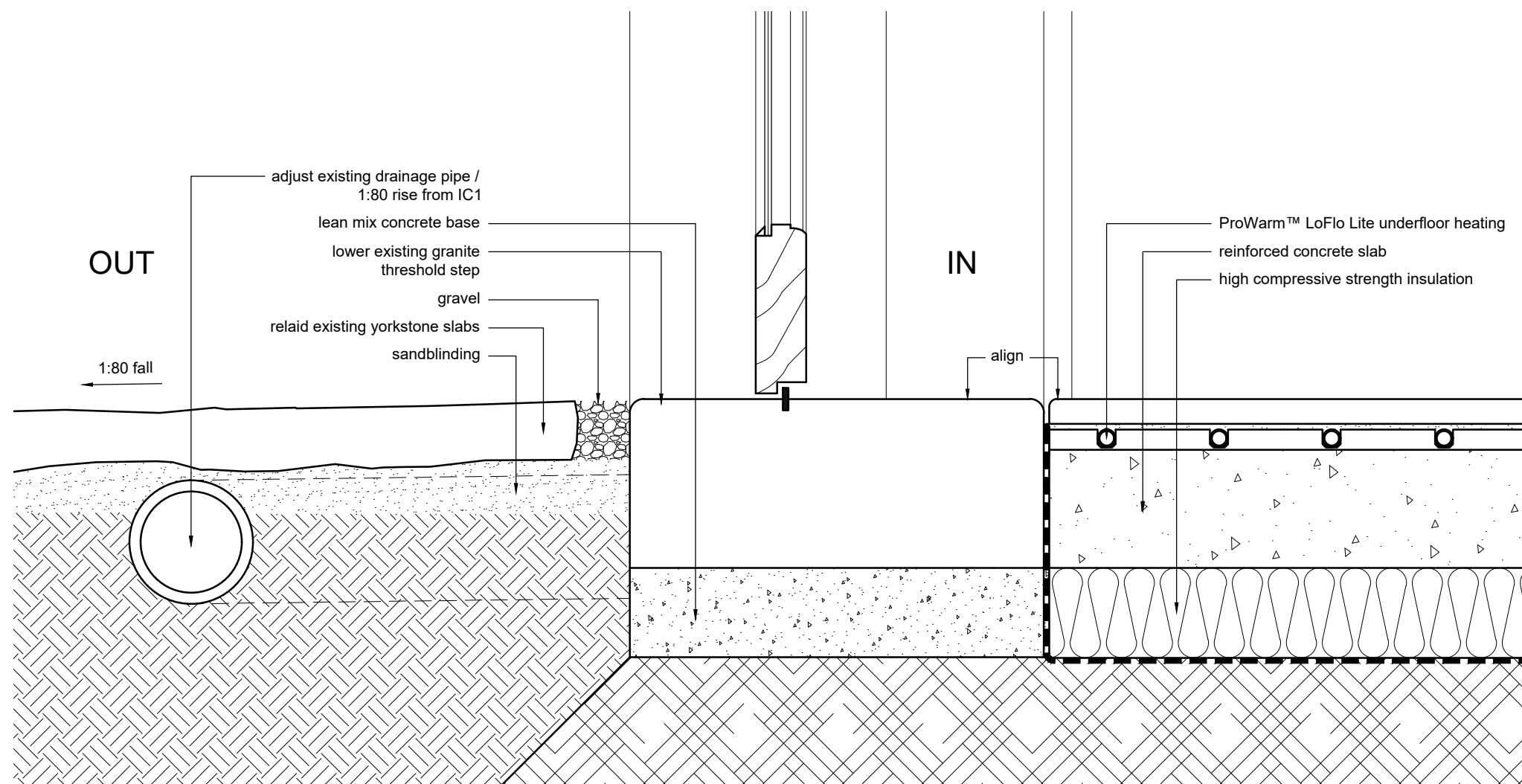
Project stage

TENDER

Date of issue

06.04.22

Revisions



David Money Architects

Unit Z 23 Alphabet Mews London SW9 0FN
T/F: 020 7587 3584 E:studio@davidmoney.com

Job title

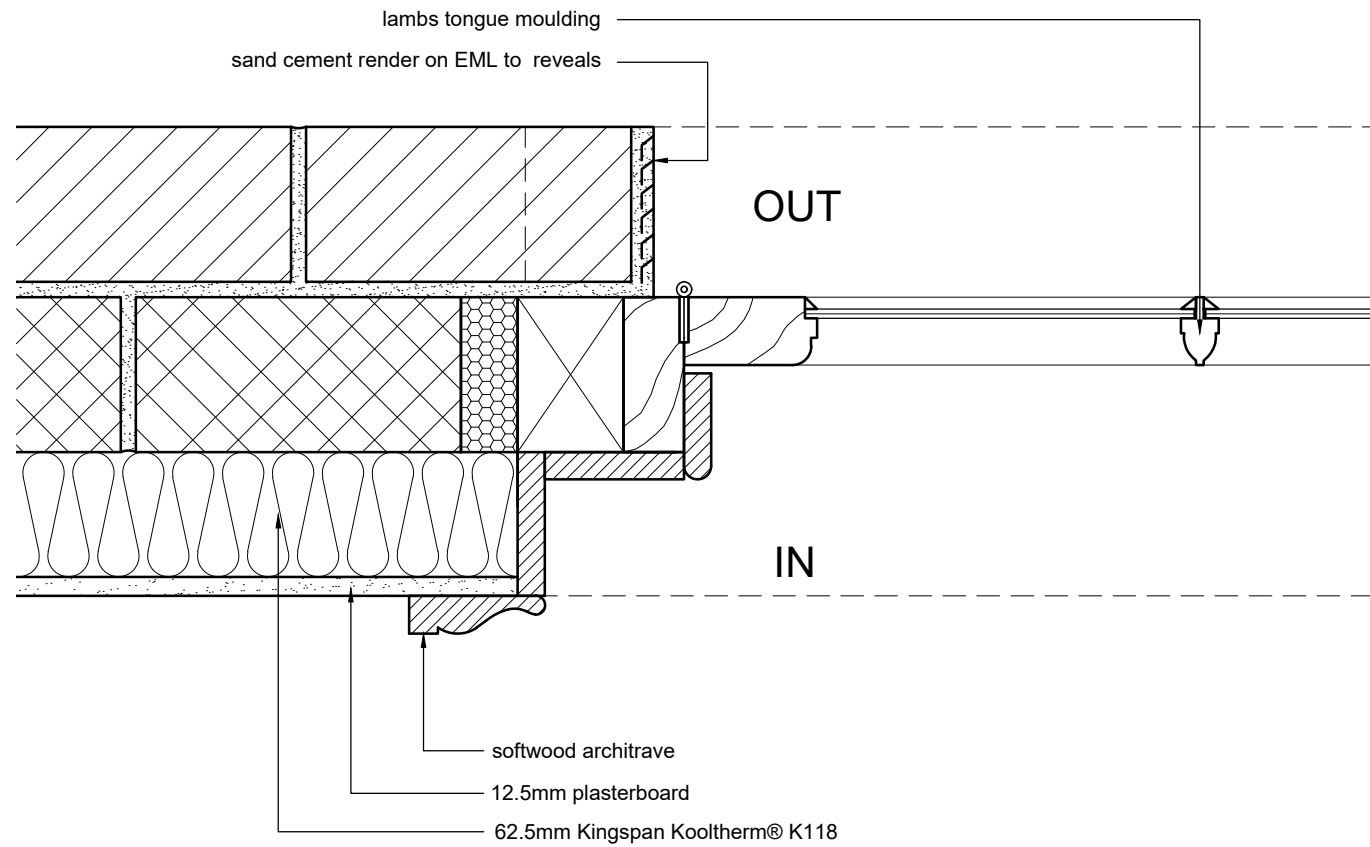
**149 Kennington Park Road
London SE11 4JJ**

Drawing title

**French door WB.3 & WB.4
Head and sill detail**

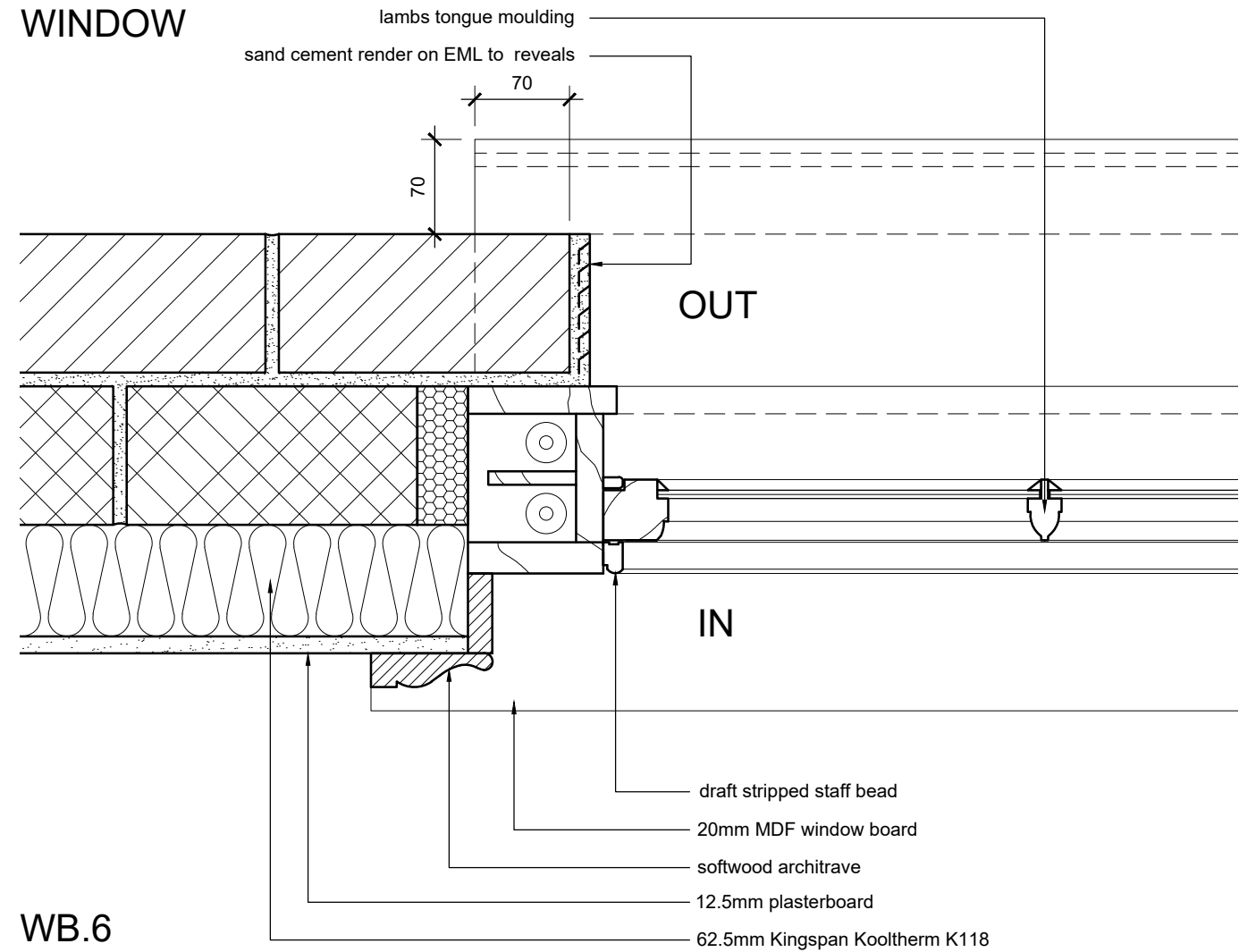
Job number	Scale@A3	Drawing number
DM335	1:5	5.42.03

FRENCH DOOR



WB.5

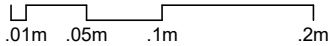
WINDOW



WB.6

Notes

1. The architect retains copyright of this drawing. It should not be reproduced without prior written consent
2. Do not scale from this drawing, unless for PLANNING Project stage. Errors/omissions should be reported to the architect.

3. 

TECHNICAL

Date of issue \ Project stage

06.04.22

Revisions

Job title

149 Kennington Park Road
London SE11 4JJ

Drawing title

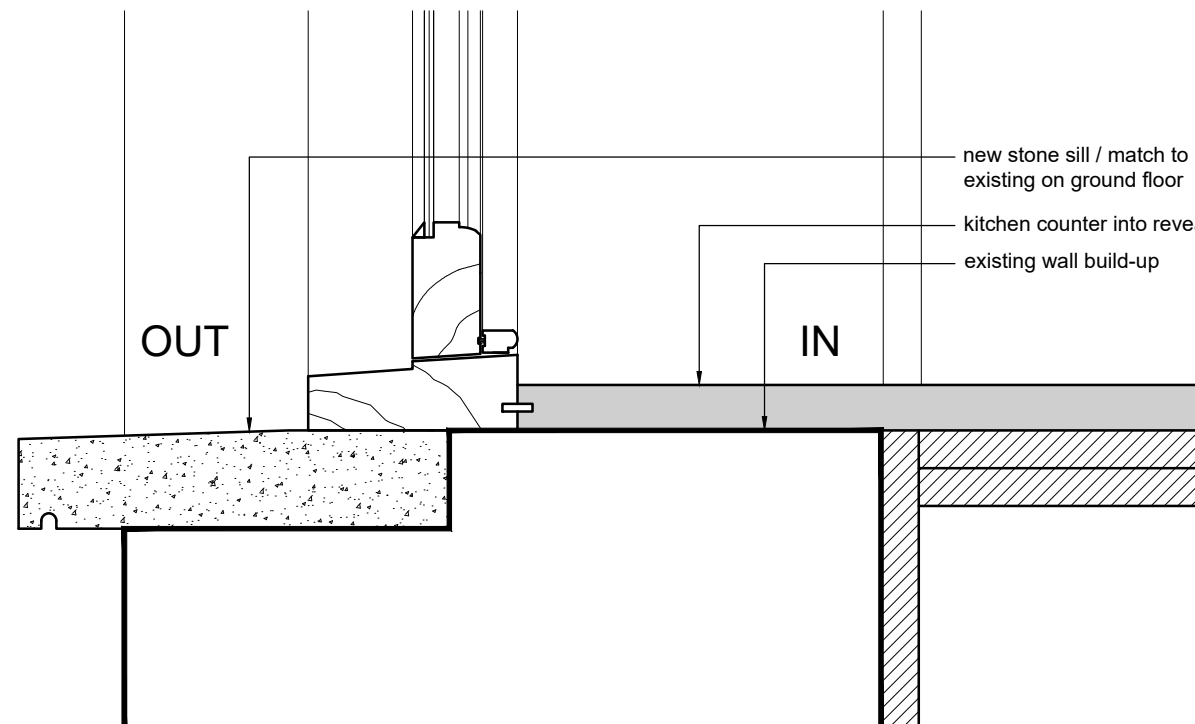
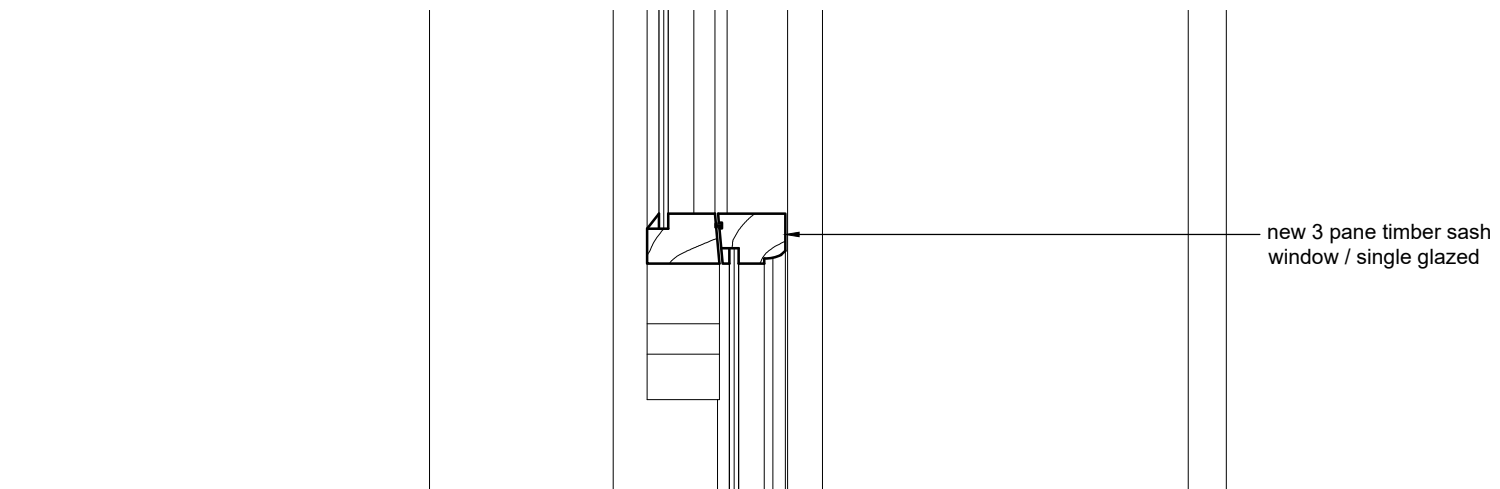
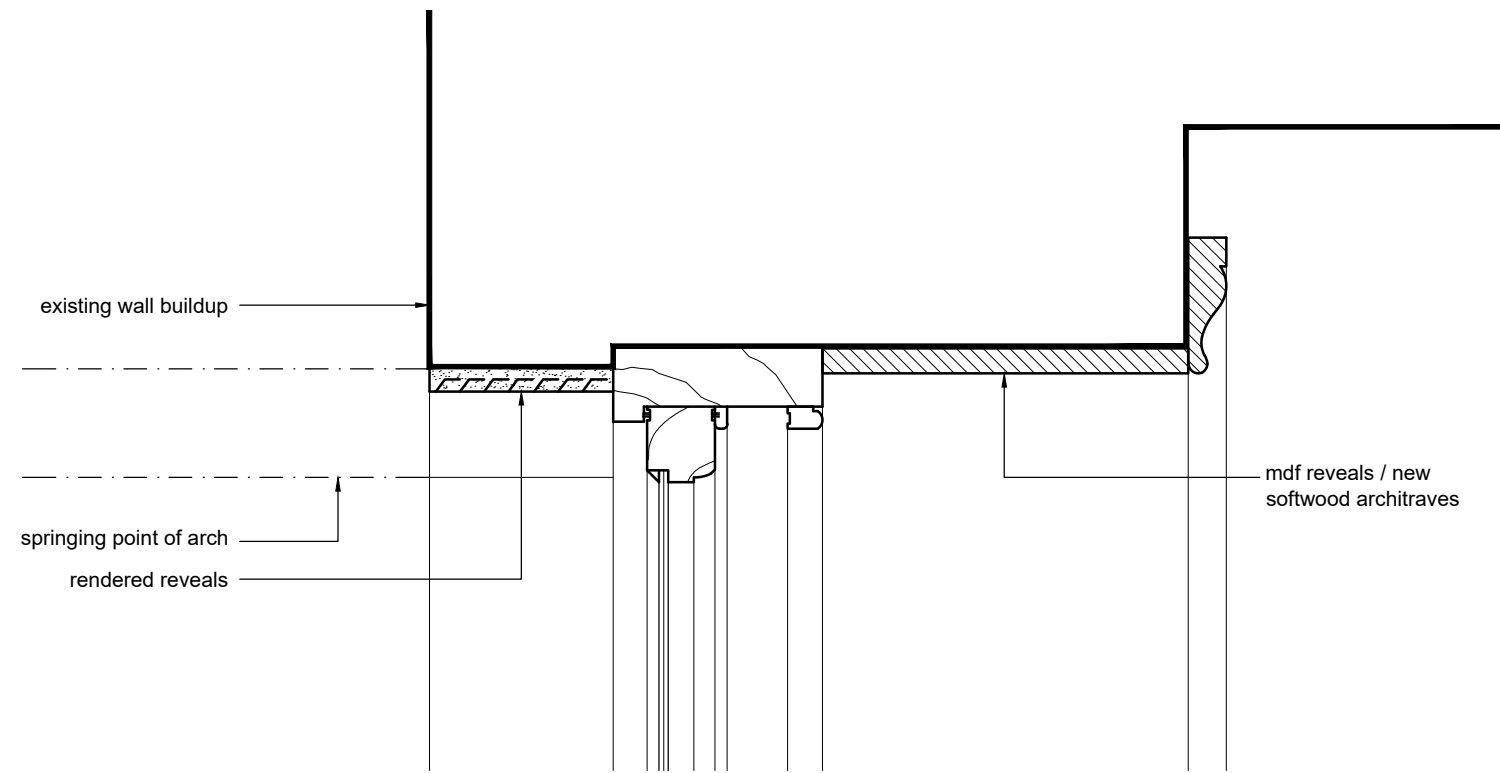
WB.5 & WB.6
Jamb detail

David Money Architects

Unit Z 23 Alphabet Mews London SW9 0FN
T/F: 020 7587 3584 E: studio@davidmoney.com

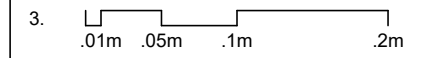
Job number Scale@A3 Drawing number

DM335 1:5 5.42.04



Notes

1. The architect retains copyright of this drawing. It should not be reproduced without prior written consent.
2. Do not scale from this drawing, unless for PLANNING project stage. Errors / omissions should be reported to the architect.



Project stage

TENDER

Date of issue

06.04.22

Revisions

David Money Architects

Unit Z 23 Alphabet Mews London SW9 0FN
T/F: 020 7587 3584 E:studio@davidmoney.com

Job title

**149 Kennington Park Road
London SE11 4JJ**

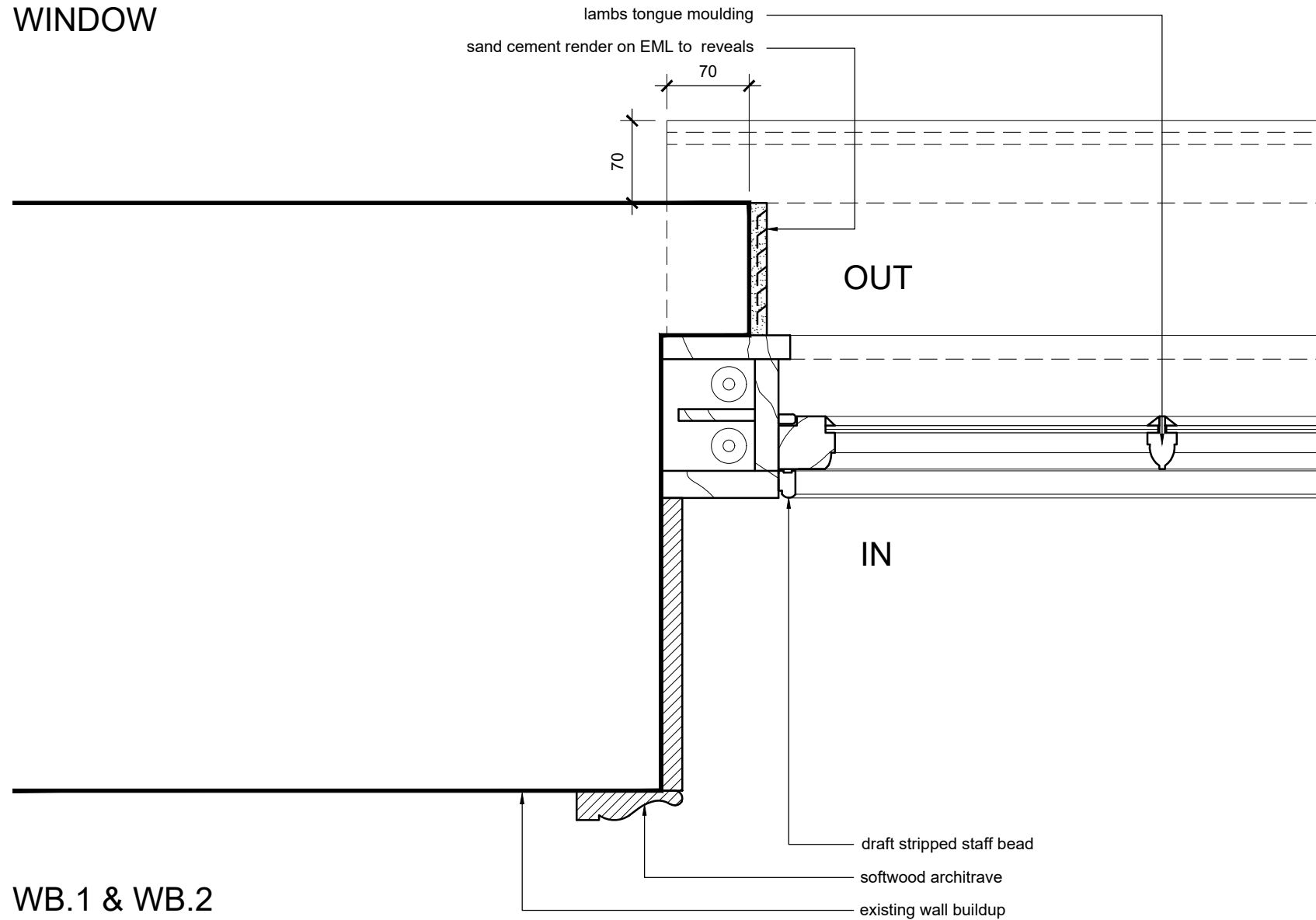
Drawing title

**WB.1 & WB.2
Head and sill detail**

Job number Scale@A3 Drawing number

DM335 1:5 5.42.05

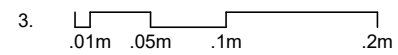
WINDOW



WB.1 & WB.2

Notes

1. The architect retains copyright of this drawing. It should not be reproduced without prior written consent
2. Do not scale from this drawing, unless for PLANNING Project stage. Errors/omissions should be reported to the architect.



TECHNICAL

Date of issue \ Project stage

06.04.22

Revisions

Job title

149 Kennington Park Road
London SE11 4JJ

Drawing title

WB.1 & WB.2
Jamb detail

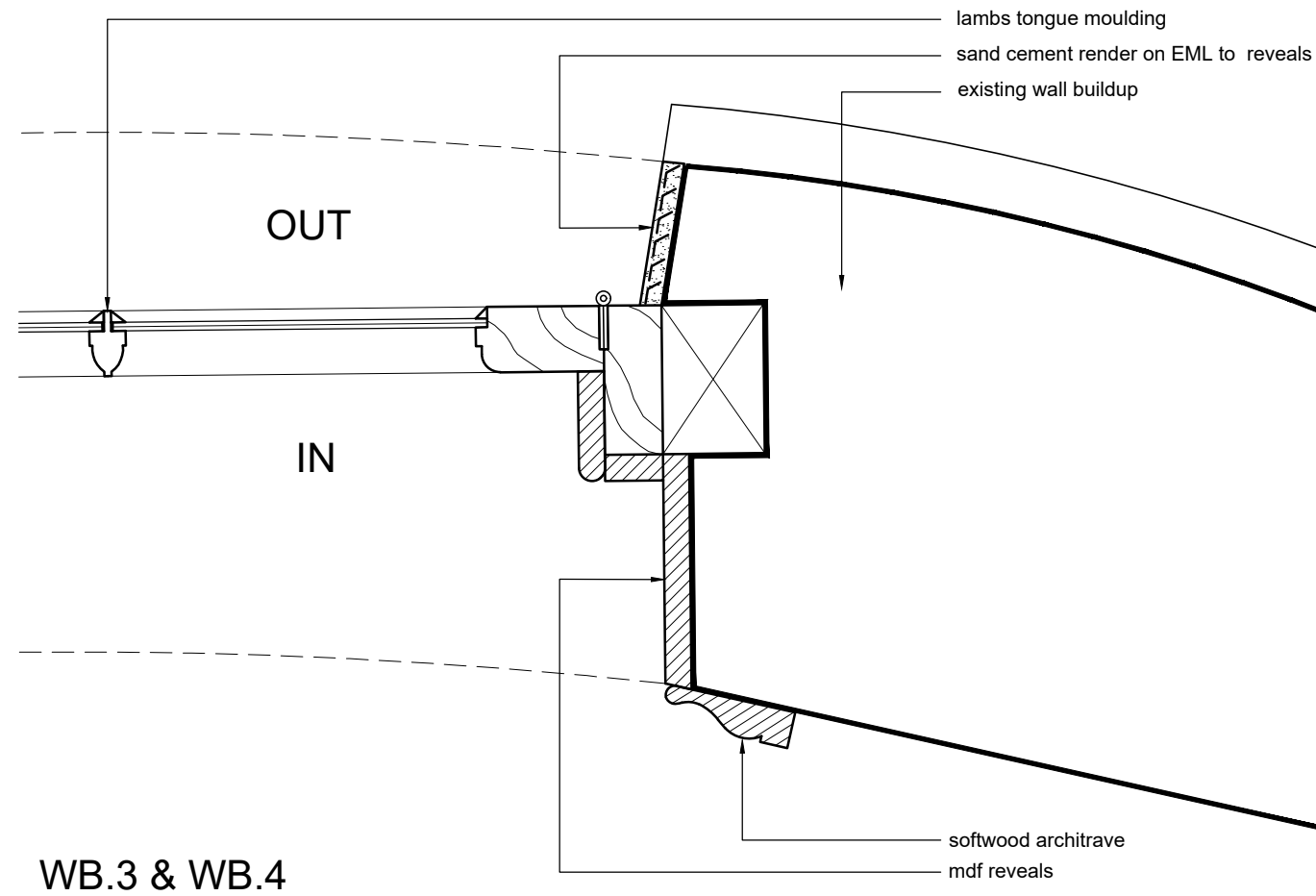
David Money Architects

Unit Z 23 Alphabet Mews London SW9 0FN
T/F: 020 7587 3584 E: studio@davidmoney.com

Job number Scale@A3 Drawing number

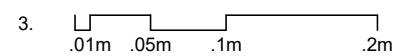
DM335 1:5 5.42.06

FRENCH DOOR



Notes

1. The architect retains copyright of this drawing. It should not be reproduced without prior written consent
2. Do not scale from this drawing, unless for PLANNING Project stage. Errors/omissions should be reported to the architect.



TECHNICAL

Date of issue \ Project stage

06.04.22

Revisions

Job title

149 Kennington Park Road
 London SE11 4JJ

Drawing title

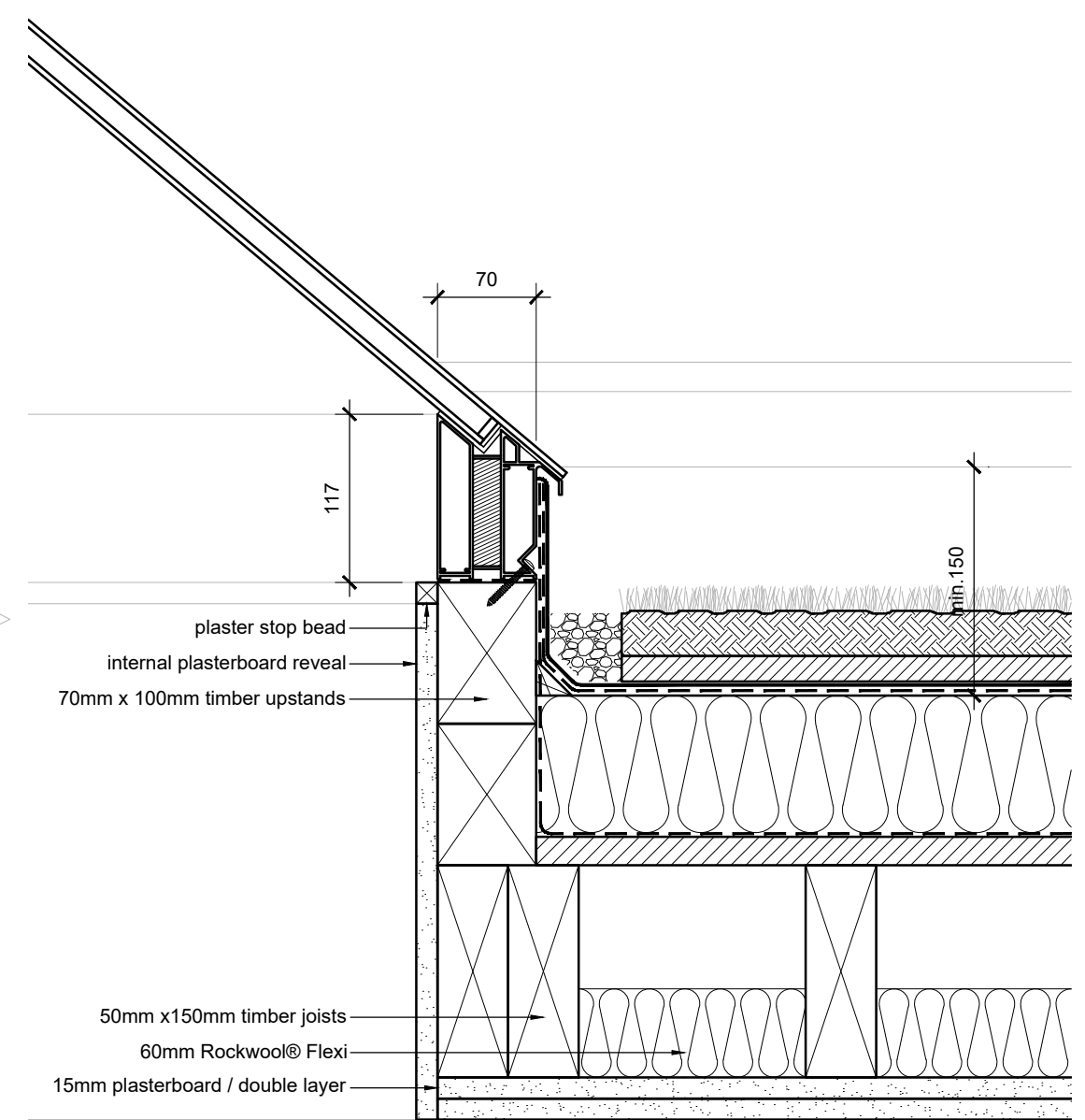
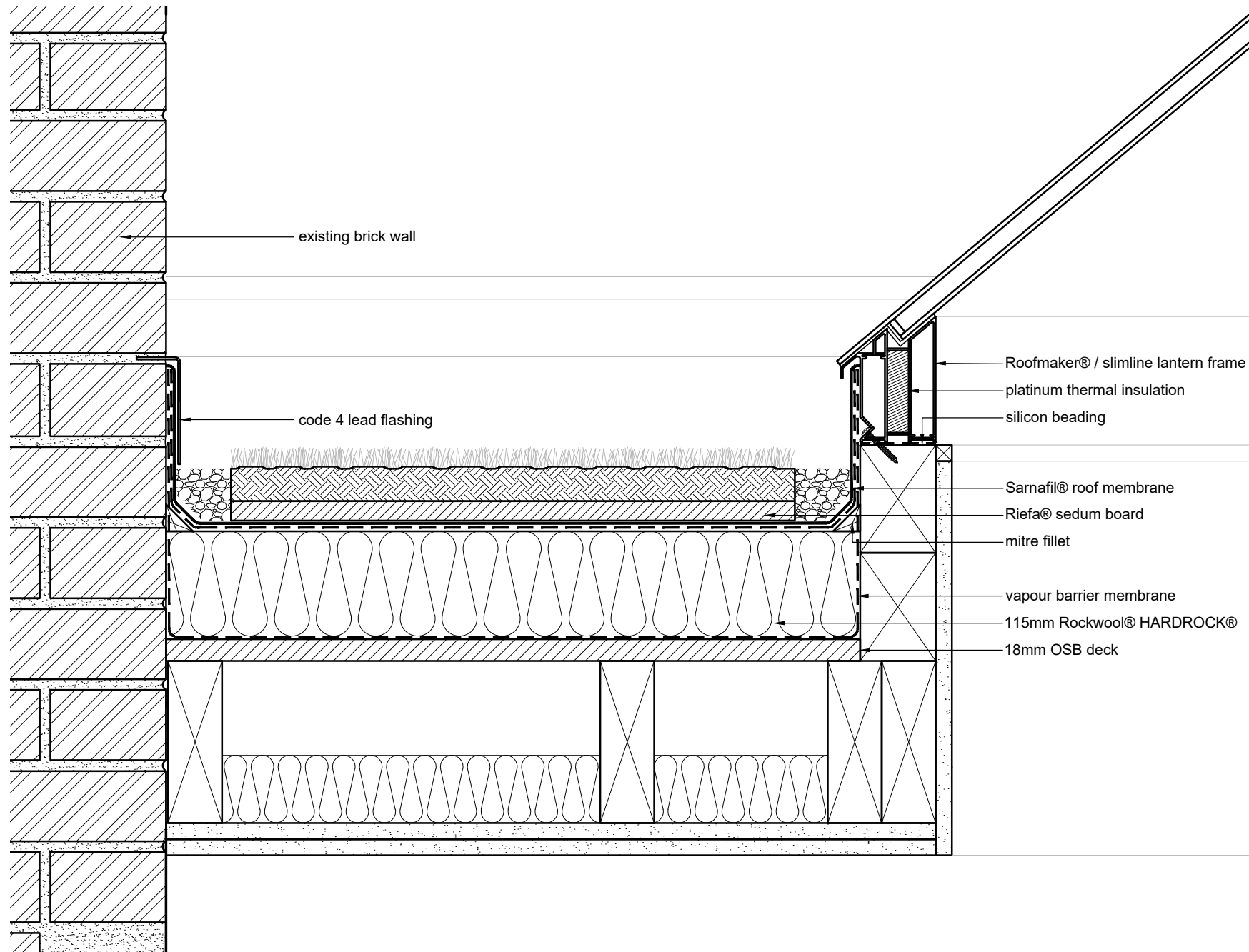
WB.3 & WB.4
 Jamb detail

David Money Architects

Unit Z 23 Alphabet Mews London SW9 0FN
 T/F: 020 7587 3584 E: studio@davidmoney.com

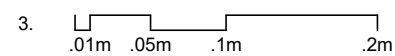
Job number Scale@A3 Drawing number

DM335 1:5 5.42.07



Notes

1. The architect retains copyright of this drawing. It should not be reproduced without prior written consent
2. Do not scale from this drawing, unless for PLANNING Project stage. Errors/omissions should be reported to the architect.



TENDER

Date of issue \ Project stage

06.04.22

Revisions

Job title

149 Kennington Park Road
London SE11 4JJ

Drawing title

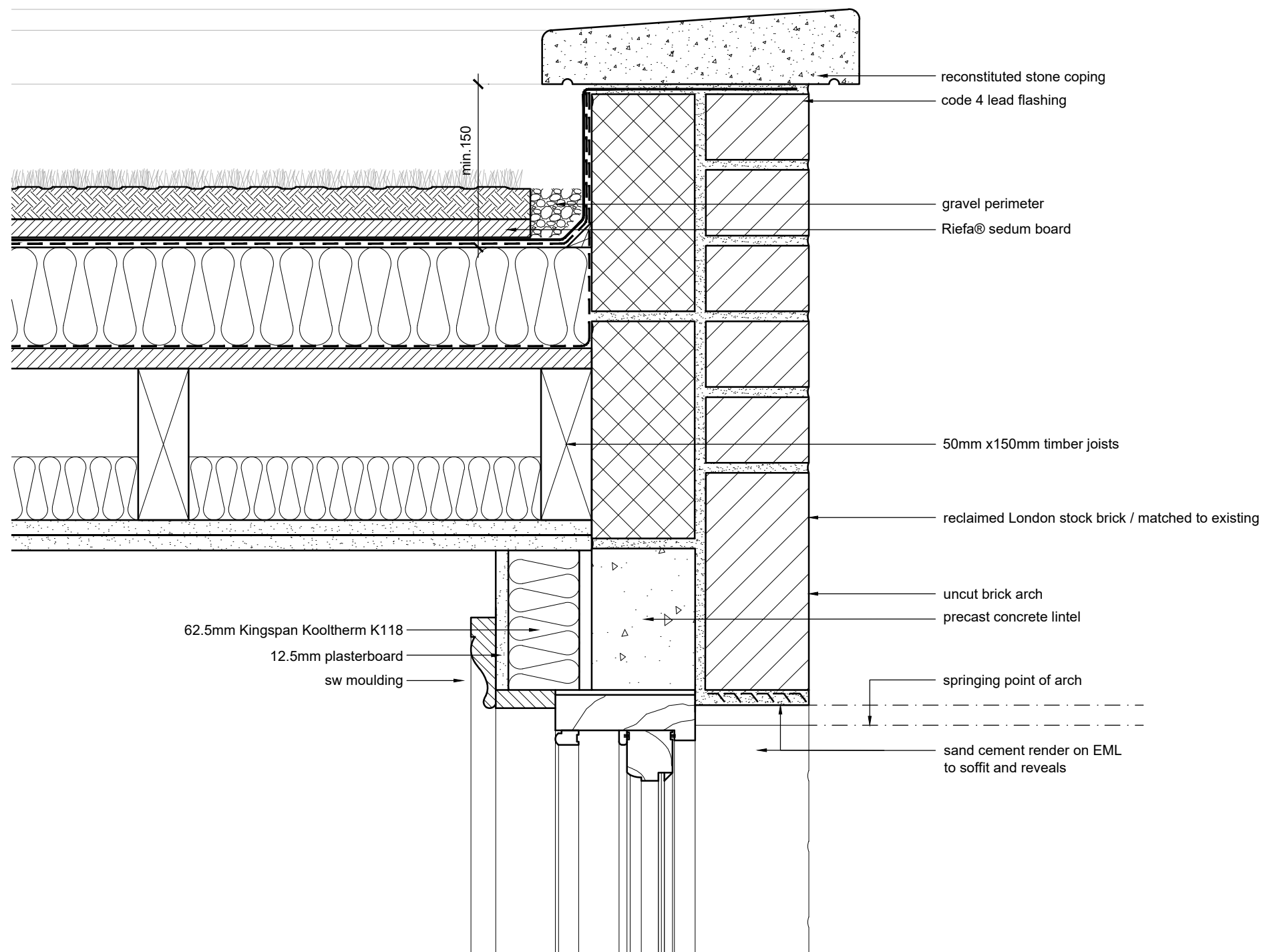
Skylight
Roof detail

David Money Architects

Unit Z 23 Alphabet Mews London SW9 0FN
T/F: 020 7587 3584 E: studio@davidmoney.com

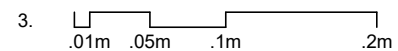
Job number Scale@A3 Drawing number

DM335 1:5 5.45.01



Notes

1. The architect retains copyright of this drawing. It should not be reproduced without prior written consent
2. Do not scale from this drawing, unless for PLANNING Project stage. Errors/omissions should be reported to the architect.



TENDER

Date of issue \ Project stage

06.04.22

Revisions

Job title

149 Kennington Park Road
London SE11 4JJ

Drawing title

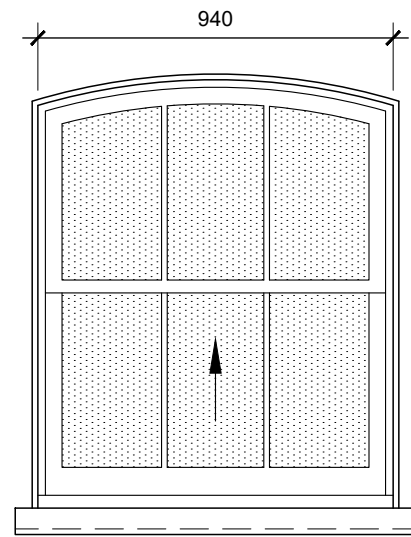
Parapet
Roof detail

David Money Architects

Unit Z 23 Alphabet Mews London SW9 0FN
T/F: 020 7587 3584 E: studio@davidmoney.com

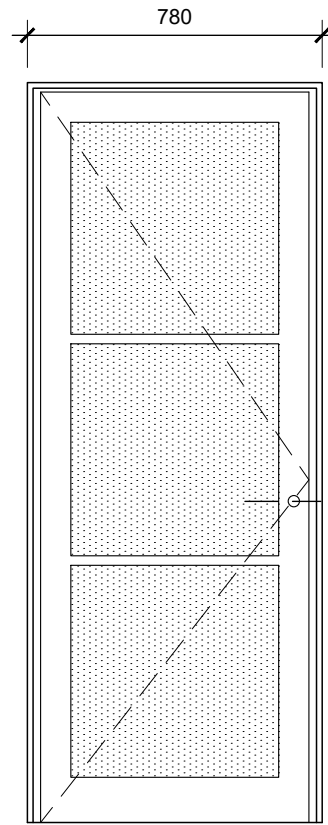
Job number Scale@A3 Drawing number

DM335 1:5 5.45.02



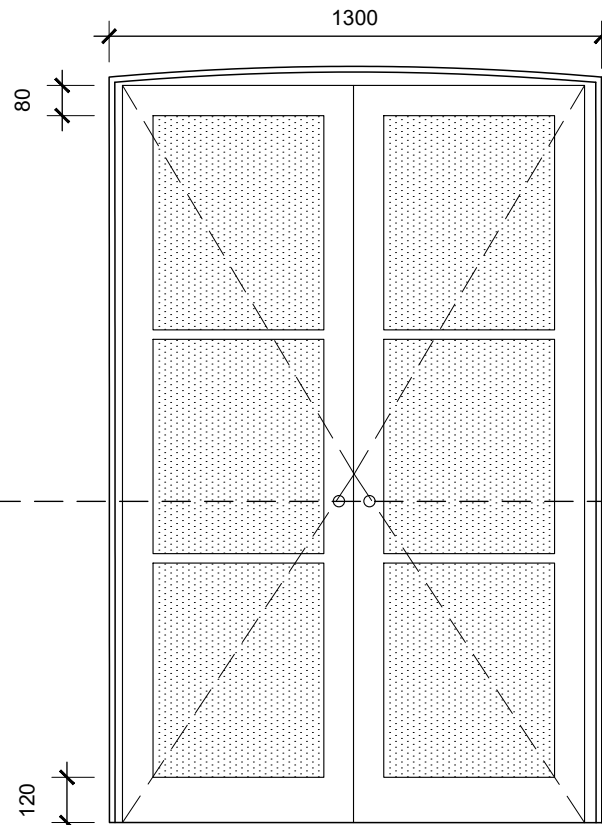
WB.1 & WB.2

- New stone sill to match ground floor existing
- New 3 pane sash window
- Rendered reveals
- Single glazed



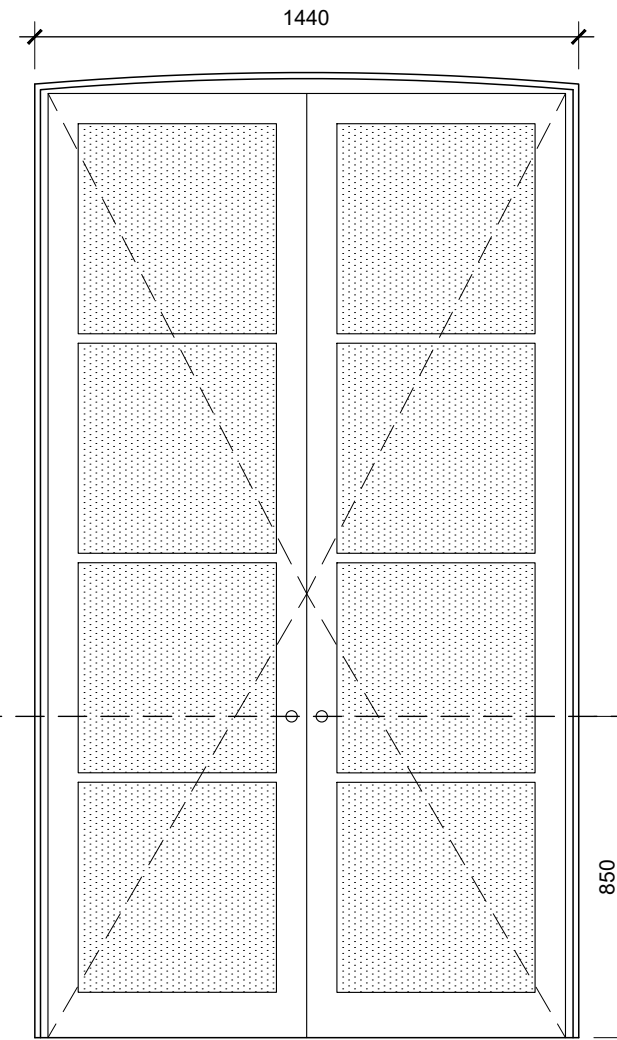
WB.3

- New 3 pane french door
- Rendered reveals
- Single glazed



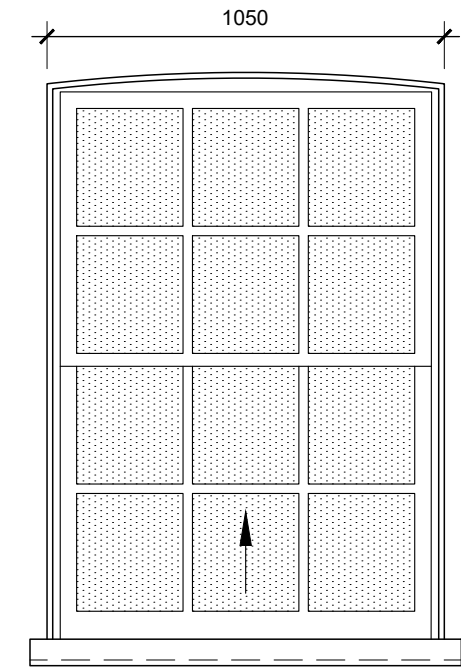
WB.4

- New 3 pane french door
- Rendered reveals
- Single glazed



WB.5

- New 4 pane french door
- Rendered reveals
- Single glazed

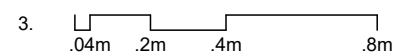


WB.6

- New 3 pane sash window
- Rendered reveals
- New stone sill
- Single glazed

Notes

1. The architect retains copyright of this drawing. It should not be reproduced without prior written consent
2. Do not scale from this drawing, unless for PLANNING Project stage. Errors/omissions should be reported to the architect.



TENDER

Date of issue \ Project stage

06.04.22

Revisions

Job title

149 Kennington Park Road
London SE11 4JJ

Drawing title

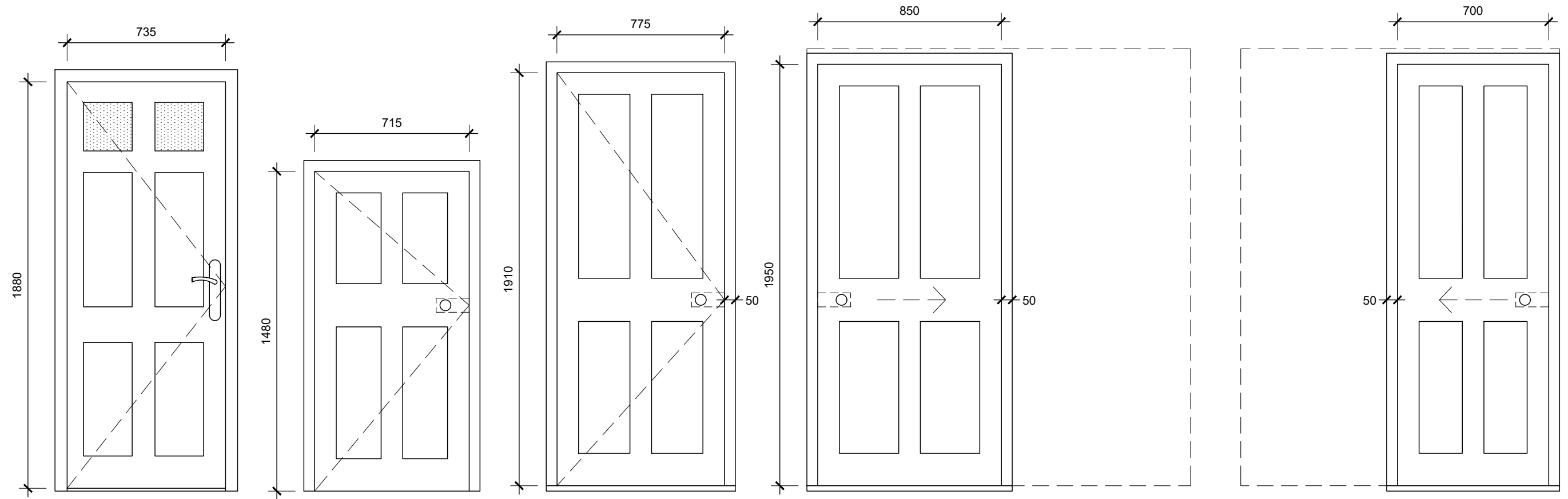
Component
Window elevations

David Money Architects

Unit Z 23 Alphabet Mews London SW9 0FN
T/F: 020 7587 3584 E: studio@davidmoney.com

Job number Scale@A3 Drawing number

DM335 1:20 5.51.01



DB.1
 - New steel security door
 - Four panel
 - no.2 glazed panels

DB.2
 - New hinged door
 - Four panel

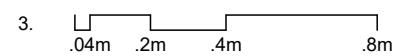
DB.3
 - New hinged door
 - Four panel
 - 50mm architrave

DB.5
 - New sliding pocket door
 - Four panel
 - Thumb-turn privacy lock

DB.6
 - New sliding pocket door
 - Four panel
 - Thumb-turn privacy lock
 - 50mm architrave

Notes

1. The architect retains copyright of this drawing. It should not be reproduced without prior written consent
2. Do not scale from this drawing, unless for PLANNING Project stage. Errors/omissions should be reported to the architect.



TENDER

Date of issue \ Project stage

06.04.22

Revisions

Job title

149 Kennington Park Road
 London SE11 4JJ

Drawing title

Component
 Door elevations

David Money Architects

Unit Z 23 Alphet Mews London SW9 0FN
 T/F: 020 7587 3584 E: studio@davidmoney.com

Job number Scale@A3 Drawing number

DM335 1:20 5.52.01