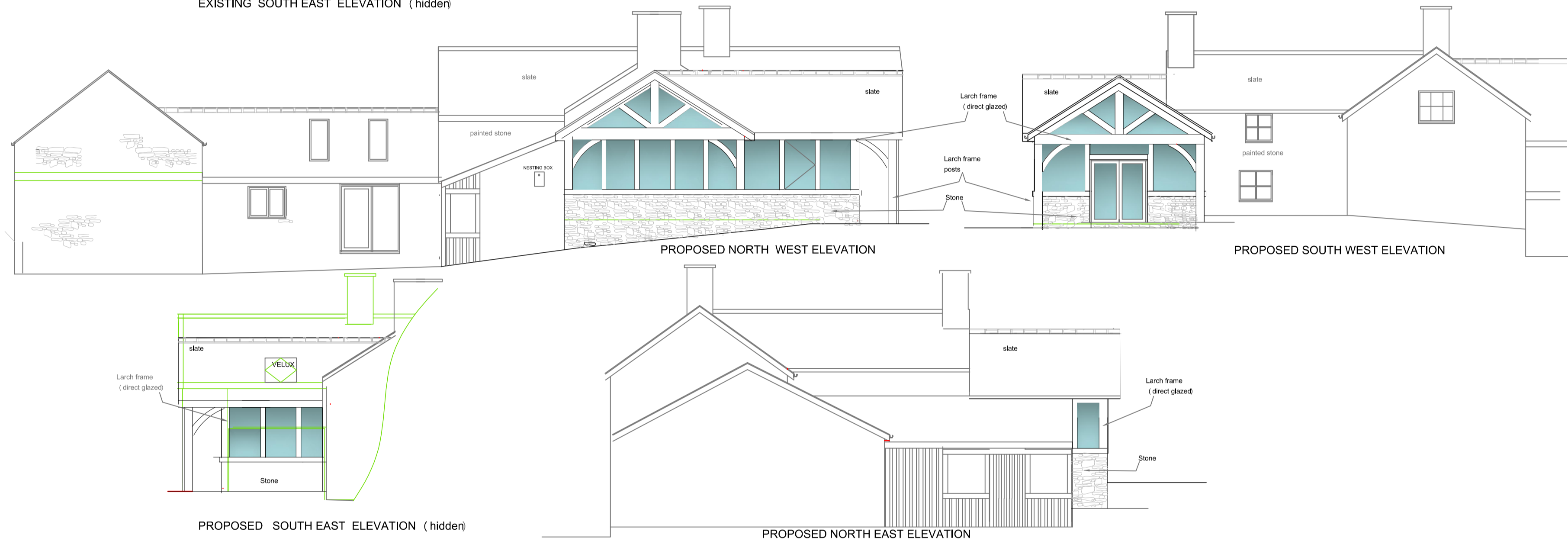


ELEVATIONS 1:100



EXISTING SOUTH EAST ELEVATION (hidden)

EXISTING NORTH EAST ELEVATION



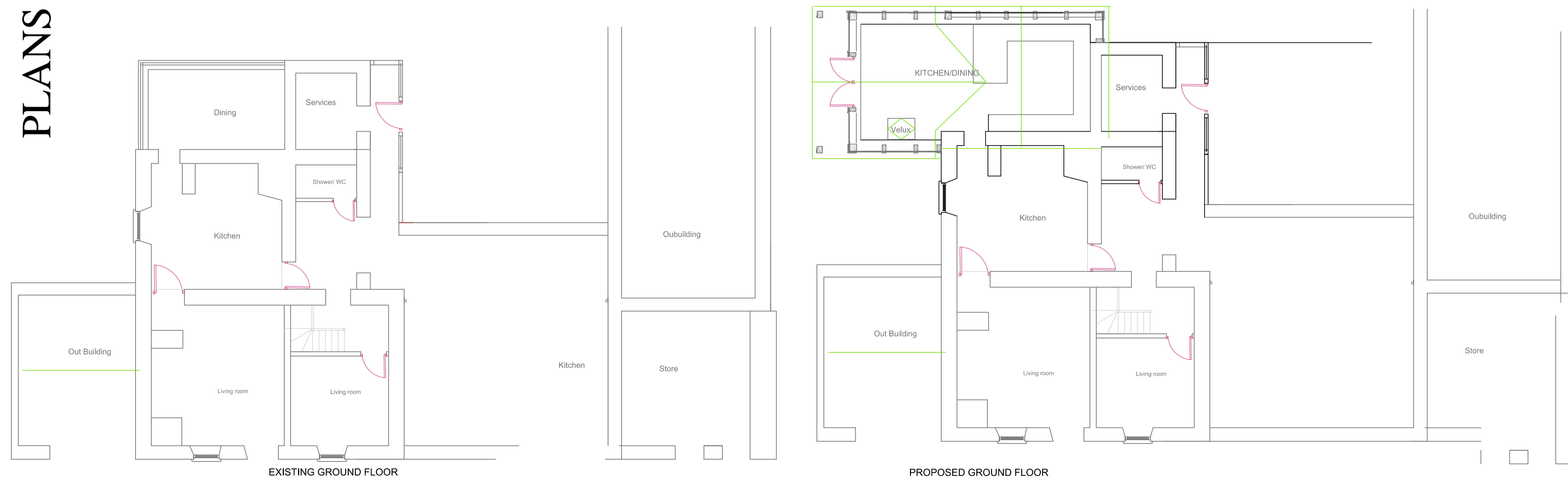
PROPOSED NORTH WEST ELEVATION

PROPOSED SOUTH WEST ELEVATION

PROPOSED SOUTH EAST ELEVATION (hidden)

PROPOSED NORTH EAST ELEVATION

PLANS 1:100

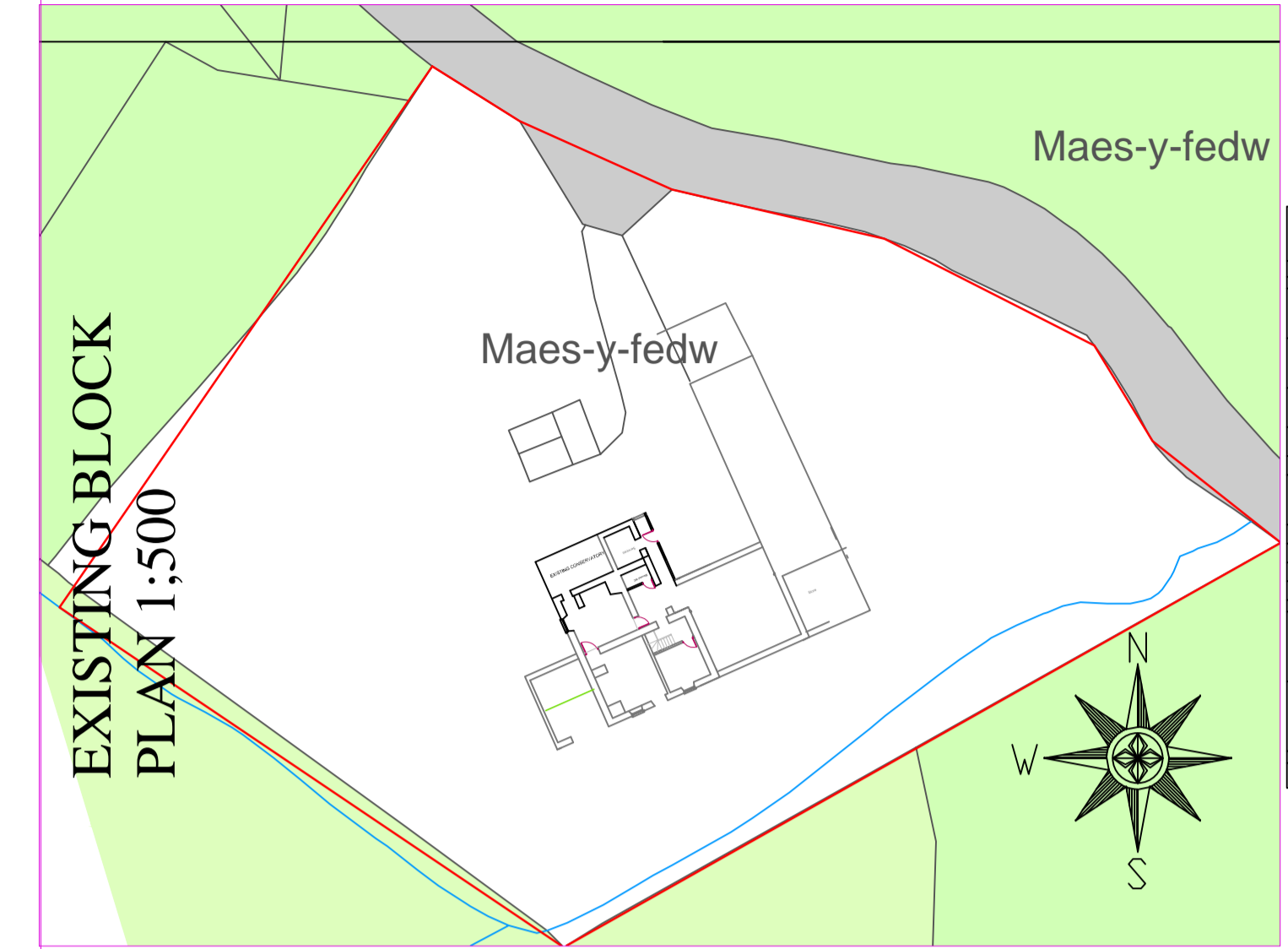


EXISTING GROUND FLOOR

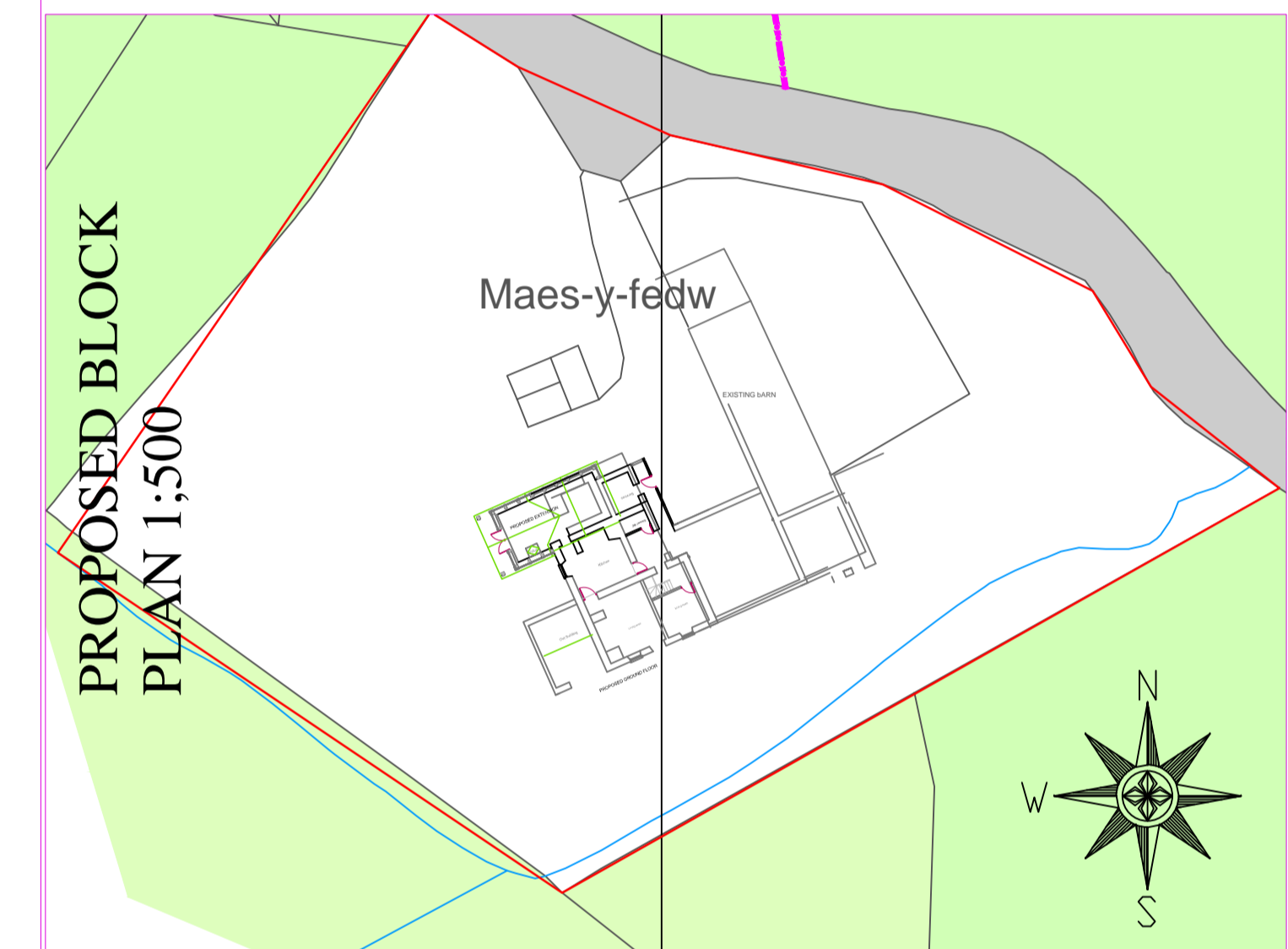
PROPOSED GROUND FLOOR

- NOTES:
- Copyright: The contents of this drawing may not be reproduced in whole or in part without the written consent of J. G. Lloyd
 - No dimensions to be scaled from this drawing.
 - All dimensions to be checked on site by Contractor.
 - Where discrepancy occurs between specification and drawings then J. G. Lloyd must be notified immediately.
 - This drawing is to be read in conjunction with specifications or other consultants drawings as applicable.
 - This drawing is intended to identify main features and principal components. Construction work should be carried out and supervised by experienced and suitably qualified personnel, therefore exhaustive detail is not required.
 - Underground electric supply and water supply services positions have not been established.

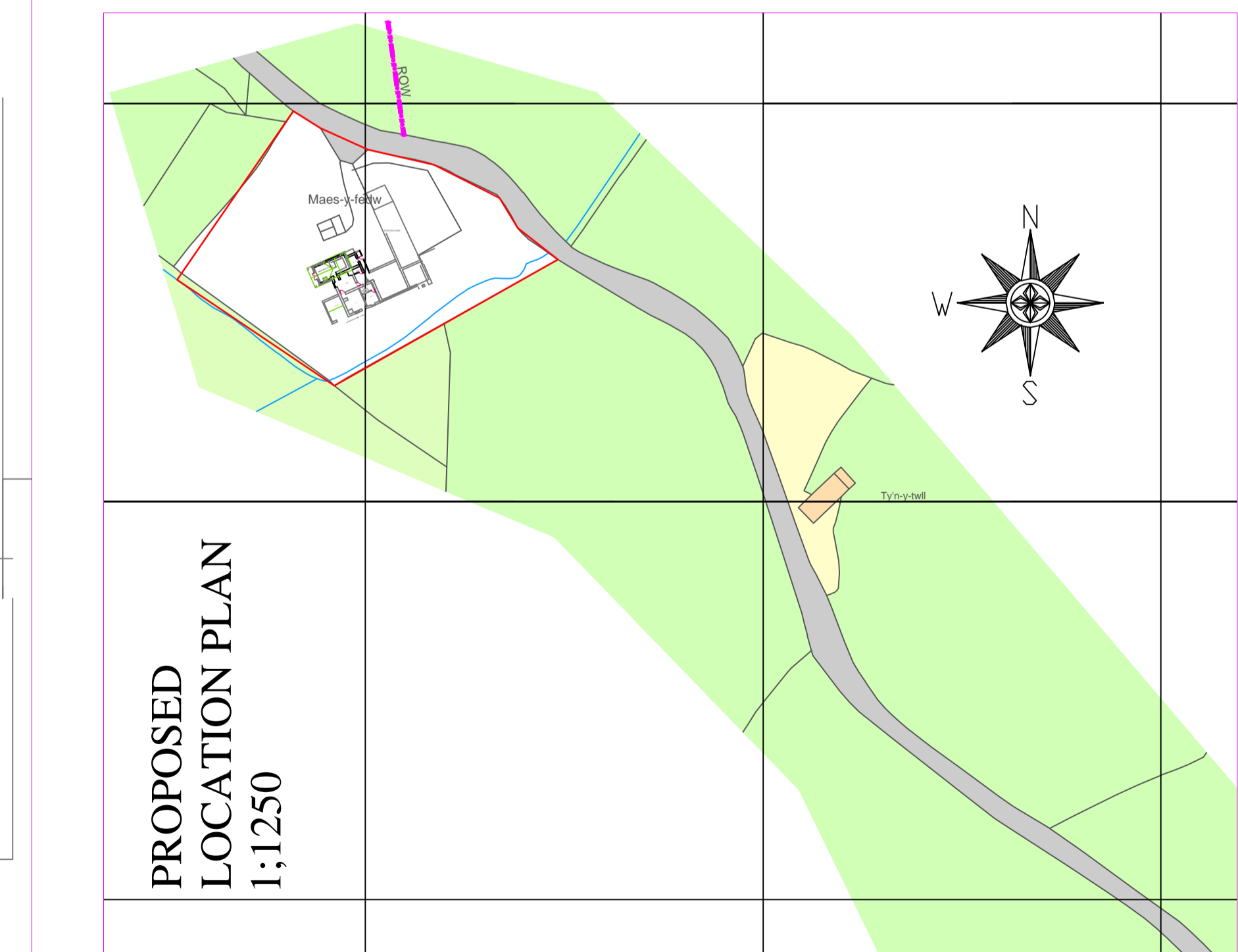
Revisions	Date	By	Chk



EXISTING BLOCK
PLAN 1:500



PROPOSED BLOCK
PLAN 1:500



PROPOSED
LOCATION PLAN
1:1250

CONSTRUCTION (Design Management) Regulations	
Designers identification of risks which can be foreseen and control on construction drawing	
CONSTRUCTION RISK ASSESSMENT	
1. Risk of injury to workers	1. To ensure that the design is safe for construction and that the design is safe for construction and that the design is safe for construction
2. Risk of damage to property	2. To ensure that the design is safe for construction and that the design is safe for construction and that the design is safe for construction
3. Risk of environmental damage	3. To ensure that the design is safe for construction and that the design is safe for construction and that the design is safe for construction
4. Risk of cost overruns	4. To ensure that the design is safe for construction and that the design is safe for construction and that the design is safe for construction
5. Risk of delays	5. To ensure that the design is safe for construction and that the design is safe for construction and that the design is safe for construction
6. Risk of poor quality	6. To ensure that the design is safe for construction and that the design is safe for construction and that the design is safe for construction
7. Risk of poor communication	7. To ensure that the design is safe for construction and that the design is safe for construction and that the design is safe for construction
8. Risk of poor coordination	8. To ensure that the design is safe for construction and that the design is safe for construction and that the design is safe for construction
9. Risk of poor collaboration	9. To ensure that the design is safe for construction and that the design is safe for construction and that the design is safe for construction
10. Risk of poor cooperation	10. To ensure that the design is safe for construction and that the design is safe for construction and that the design is safe for construction
11. Risk of poor communication	11. To ensure that the design is safe for construction and that the design is safe for construction and that the design is safe for construction
12. Risk of poor coordination	12. To ensure that the design is safe for construction and that the design is safe for construction and that the design is safe for construction
13. Risk of poor collaboration	13. To ensure that the design is safe for construction and that the design is safe for construction and that the design is safe for construction
14. Risk of poor cooperation	14. To ensure that the design is safe for construction and that the design is safe for construction and that the design is safe for construction
15. Risk of poor communication	15. To ensure that the design is safe for construction and that the design is safe for construction and that the design is safe for construction
16. Risk of poor coordination	16. To ensure that the design is safe for construction and that the design is safe for construction and that the design is safe for construction
17. Risk of poor collaboration	17. To ensure that the design is safe for construction and that the design is safe for construction and that the design is safe for construction
18. Risk of poor cooperation	18. To ensure that the design is safe for construction and that the design is safe for construction and that the design is safe for construction
19. Risk of poor communication	19. To ensure that the design is safe for construction and that the design is safe for construction and that the design is safe for construction
20. Risk of poor coordination	20. To ensure that the design is safe for construction and that the design is safe for construction and that the design is safe for construction
21. Risk of poor collaboration	21. To ensure that the design is safe for construction and that the design is safe for construction and that the design is safe for construction
22. Risk of poor cooperation	22. To ensure that the design is safe for construction and that the design is safe for construction and that the design is safe for construction
23. Risk of poor communication	23. To ensure that the design is safe for construction and that the design is safe for construction and that the design is safe for construction
24. Risk of poor coordination	24. To ensure that the design is safe for construction and that the design is safe for construction and that the design is safe for construction
25. Risk of poor collaboration	25. To ensure that the design is safe for construction and that the design is safe for construction and that the design is safe for construction
26. Risk of poor cooperation	26. To ensure that the design is safe for construction and that the design is safe for construction and that the design is safe for construction
27. Risk of poor communication	27. To ensure that the design is safe for construction and that the design is safe for construction and that the design is safe for construction
28. Risk of poor coordination	28. To ensure that the design is safe for construction and that the design is safe for construction and that the design is safe for construction
29. Risk of poor collaboration	29. To ensure that the design is safe for construction and that the design is safe for construction and that the design is safe for construction
30. Risk of poor cooperation	30. To ensure that the design is safe for construction and that the design is safe for construction and that the design is safe for construction

	t: 01691 648 858 e: design@alloydarchitecture.co.uk www.alloydarchitecture.co.uk	The Larches, Llanfyllin, Powys, SY22 5NF	Proposed Extension Land at Maes-y-fedw Pwllheli Farm Powys for Mr & Mrs Harris	Plans					
				Scale	Date	Drawn by	Checked	Number	Rev
				1:100, 1:500, 1:1250	5/22			632/01	