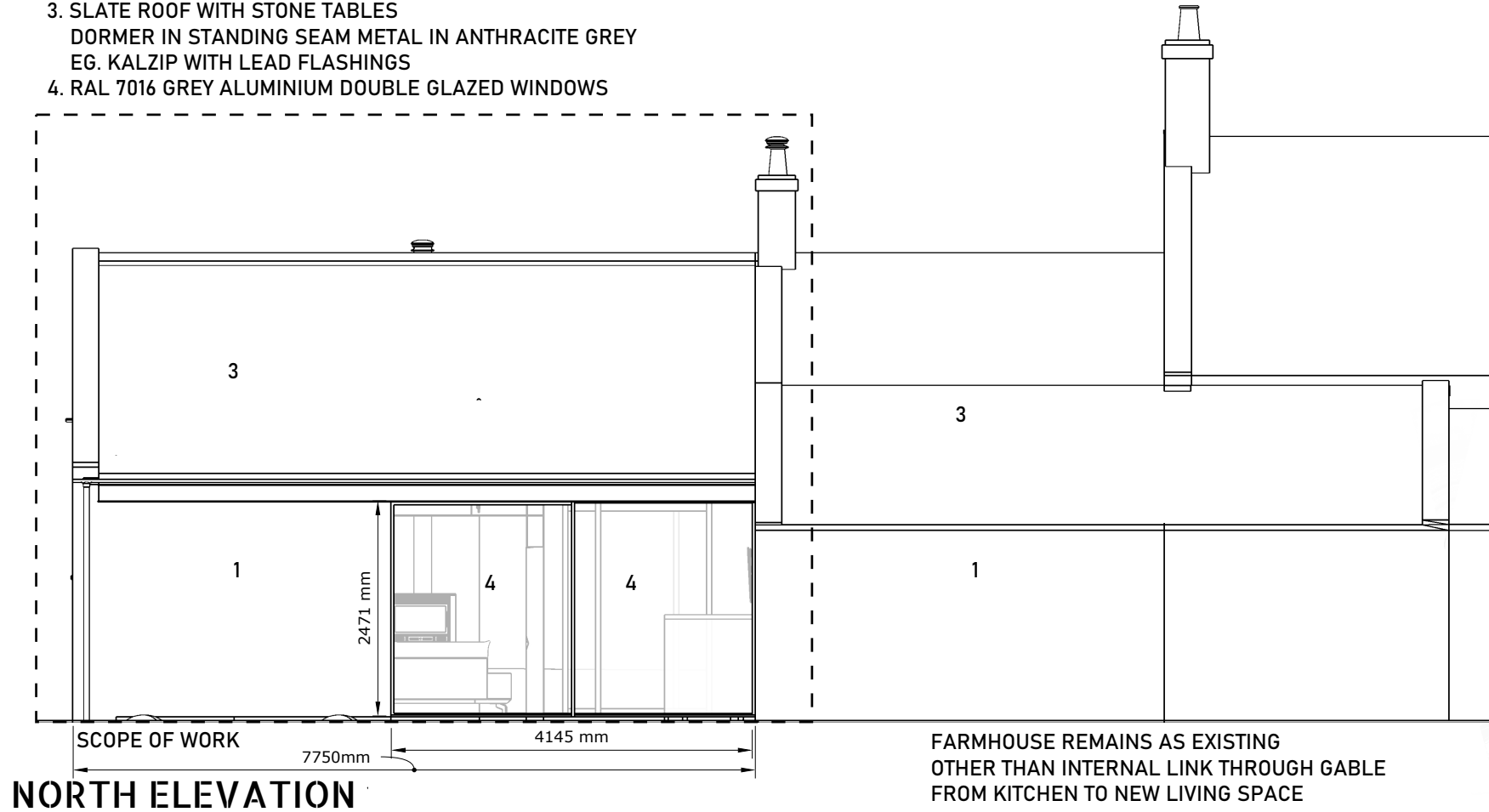


DRAWINGS - PROPOSED

PROPOSED MATERIALS:

1. RANDOM LOCAL STONE WALLS
2. CEDAR OR SIBERIAN LARCH TIMBER BOARD CLADDING
3. SLATE ROOF WITH STONE TABLES
DORMER IN STANDING SEAM METAL IN ANTHRACITE GREY
EG. KALZIP WITH LEAD FLASHINGS
4. RAL 7016 GREY ALUMINIUM DOUBLE GLAZED WINDOWS



NORTH ELEVATION

FARMHOUSE REMAINS AS EXISTING
OTHER THAN INTERNAL LINK THROUGH GABLE
FROM KITCHEN TO NEW LIVING SPACE

STRIPP

16

architectural design
01669621538

a.stripp68@btinternet.com