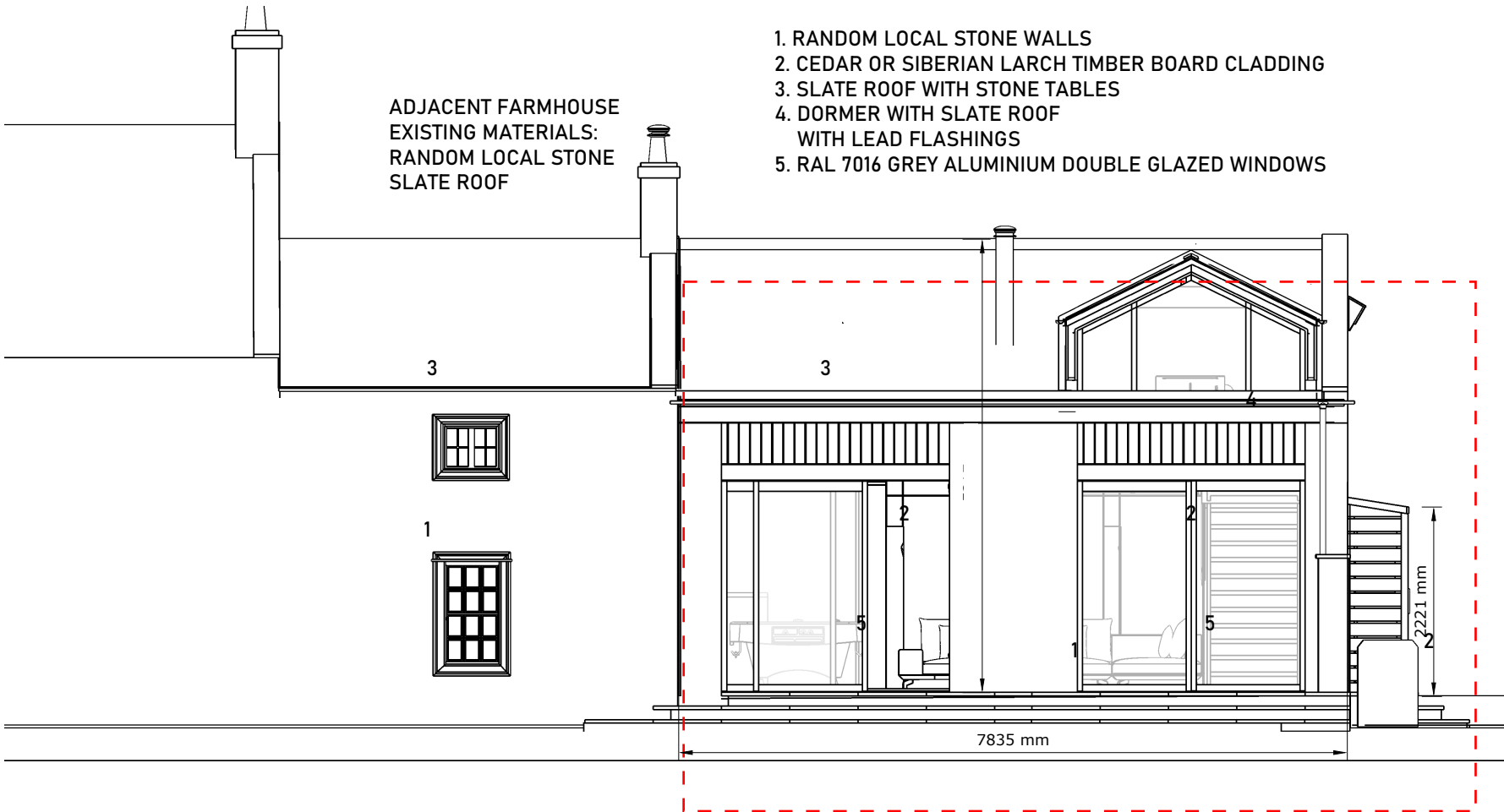


# DRAWINGS - PROPOSED

## PROPOSED MATERIALS:

1. RANDOM LOCAL STONE WALLS
2. CEDAR OR SIBERIAN LARCH TIMBER BOARD CLADDING
3. SLATE ROOF WITH STONE TABLES
4. DORMER WITH SLATE ROOF WITH LEAD FLASHINGS
5. RAL 7016 GREY ALUMINIUM DOUBLE GLAZED WINDOWS

ADJACENT FARMHOUSE  
EXISTING MATERIALS:  
RANDOM LOCAL STONE  
SLATE ROOF



SOUTH ELEVATION

SCOPE OF WORK

**STRIPP**

DESIGN

11

07513 782517