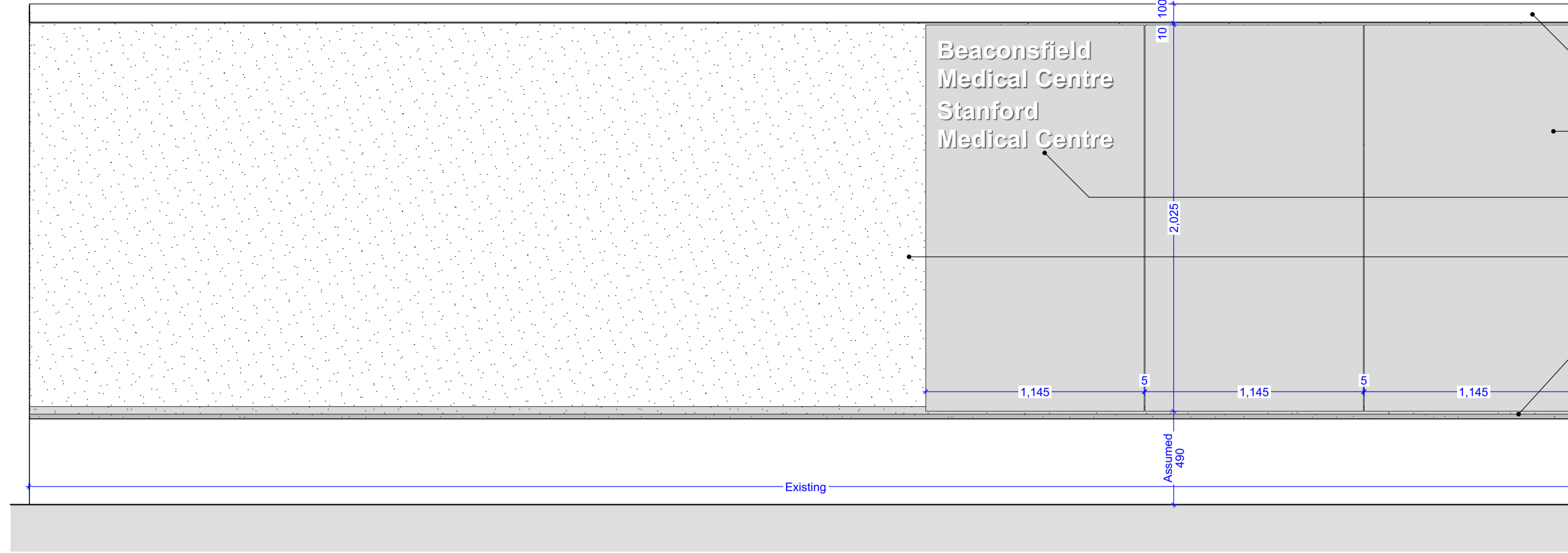


Bin Store North Elevation

Scale: 1:20



Bin Store East Elevation

Scale: 1:20

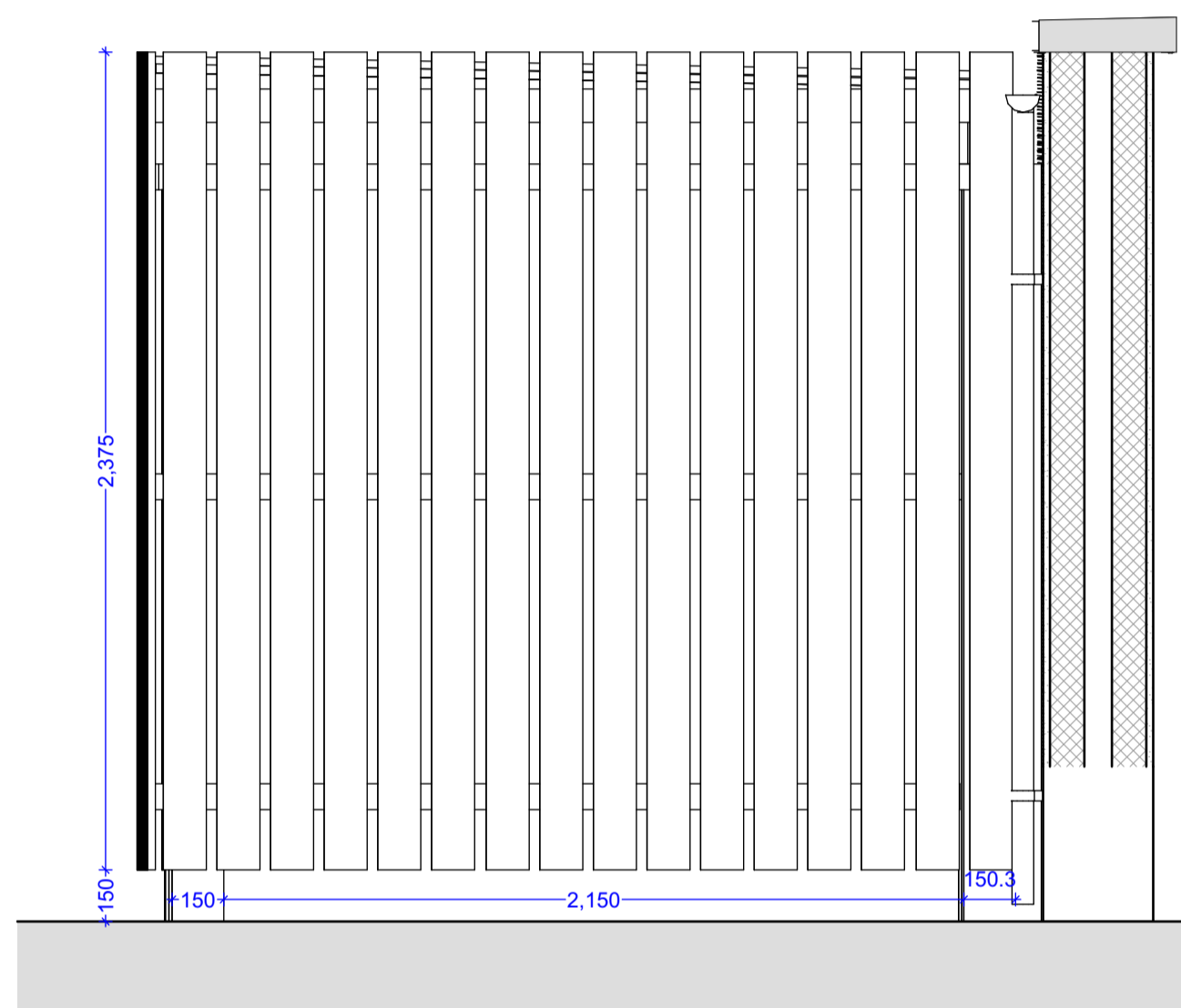
Marley Alutec Evoke coping system with all associated angles, stopends and facing brackets. Install proprietary glazing shims beneath brackets to create nominal 2" pitch to fall towards roof. Colour TBC.

9mm Rockpanel A2 cladding system on suitable metal helping hand system mechanically fixed back to blockwork leaf beneath. All installed in accordance with manufacturers details and specification.

Size and style of signage TBA. Subject to advertising consent.

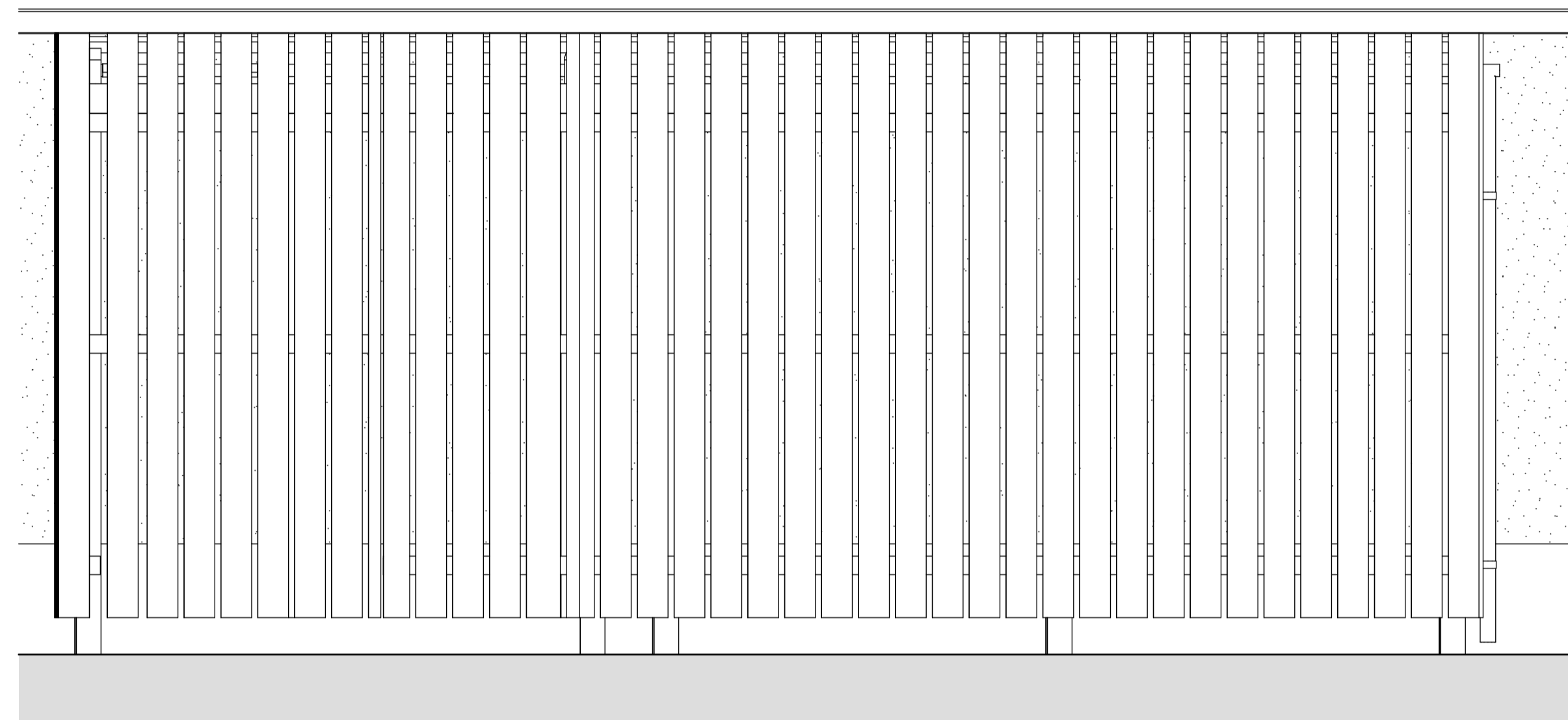
Weber PralM through coloured render system with associated render stop beads, corner beads etc. Colour: Off White TBC. All installed in accordance with manufacturers details and specification.

PPC aluminium drip profile to run over existing low-level wall. Existing wall and foundations to be checked for suitability prior to building off of.



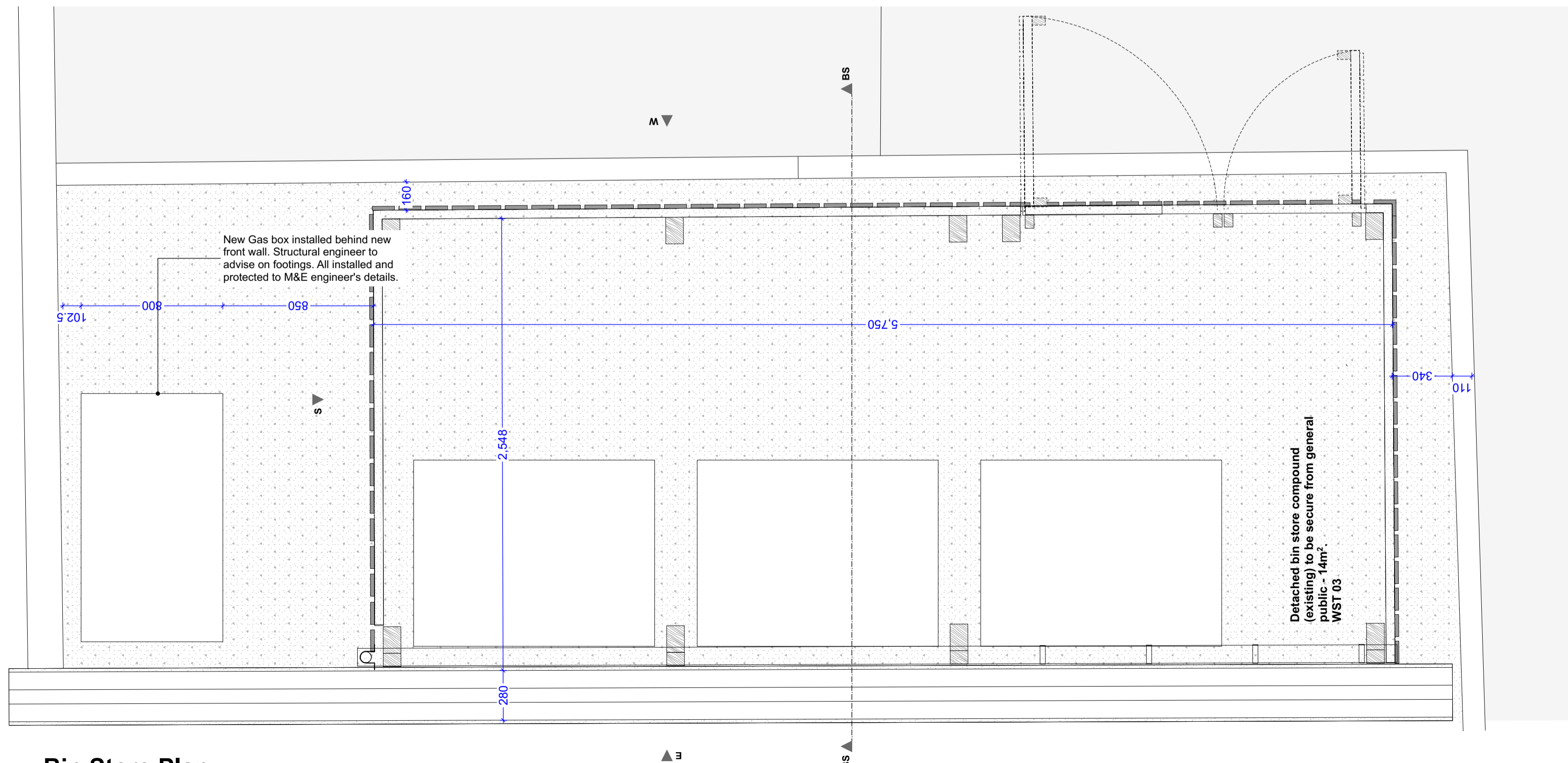
Bin Store South Elevation

Scale: 1:20



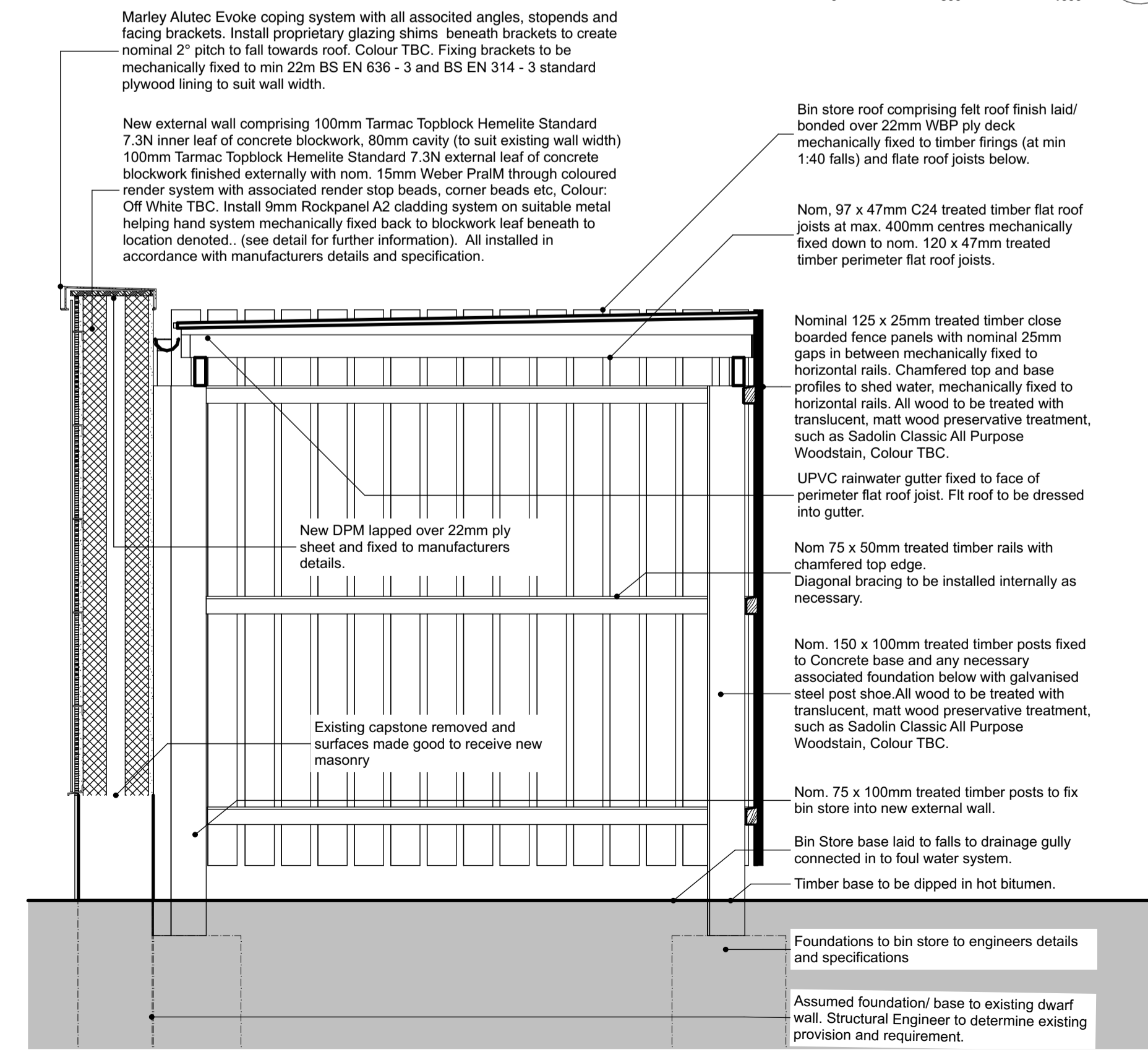
Bin Store West Elevation

Scale: 1:20



Bin Store Plan

Scale: 1:20



Bin Store Section

Scale: 1:20

Marley Alutec Evoke coping system with all associated angles, stopends and facing brackets. Install proprietary glazing shims beneath brackets to be mechanically fixed to min 22m BS EN 636 - 3 and BS EN 314 - 3 standard plywood lining to suit wall width.

New external wall comprising 100mm Tarmac Topblock Hemelite Standard 7.3N inner leaf of concrete blockwork, 80mm cavity (to suit existing wall width) 100mm Tarmac Topblock Hemelite Standard 7.3N external leaf of concrete blockwork finished externally with nom. 15mm Weber PralM through coloured render system with associated render stop beads, corner beads etc. Colour: Off White TBC. Install 9mm Rockpanel A2 cladding system on suitable metal helping hand system mechanically fixed back to blockwork leaf beneath to location denoted.. (see detail for further information). All installed in accordance with manufacturers details and specification.

Bin store roof comprising felt roof finish laid/ bonded over 22mm WBP ply deck mechanically fixed to timber frings (at min 1:40 falls) and fite roof joists below.

Nom. 97 x 47mm C24 treated timber flat roof joists at max. 400mm centres mechanically fixed down to nom. 120 x 47mm treated timber perimeter flat roof joists.

Nominal 125 x 25mm treated timber close boarded fence panels with nominal 25mm gaps in between mechanically fixed to horizontal rails. Chamfered top and base profiles to shed water, mechanically fixed to horizontal rails. All wood to be treated with translucent, matt wood preservative treatment, such as Sadolin Classic All Purpose Woodstain, Colour TBC.

UPVC rainwater gutter fixed to face of perimeter flat roof joist. Fit roof to be dressed into gutter.

New DPM lapped over 22mm ply sheet and fixed to manufacturers details.

Nom 75 x 50mm treated timber rails with chamfered top edge. Diagonal bracing to be installed internally as necessary.

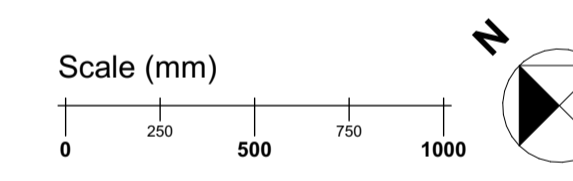
Nom. 150 x 100mm treated timber posts fixed to Concrete base and any necessary associated foundation below with galvanised steel post shoe. All wood to be treated with translucent, matt wood preservative treatment, such as Sadolin Classic All Purpose Woodstain, Colour TBC.

Nom. 75 x 100mm treated timber posts to fix bin store into new external wall.

Bin Store base laid to falls to drainage gully connected in to foul water system. Timber base to be dipped in hot bitumen.

Foundations to bin store to engineers details and specifications.

Assumed foundation/ base to existing dwarf wall. Structural Engineer to determine existing provision and requirement.



Disclaimer: brp architects Ltd. accept no responsibility for work not undertaken fully in accordance with the contents of this drawing and related specifications. This document and its design content is copyright protected ©. It shall be read in conjunction with all other associated project information including models, specifications, schedules and related consultants documents. Do not scale from documents for construction purposes. Dimensions to take precedent over scaling. All scales noted correct at original paper size. All dimensions to be checked on site. Immediately report any discrepancies, errors or omissions on this document to the originator. If in doubt ask.

Source File: P183-6 25 210930 Working.pln

Rev	Date	Drawn	Note
T01	17/03/21	JSJ	Update Drawings to Tender.
T02	13/04/21	JSJ	Notes and dimensions added to front of bin store
T03	10/05/21	JSJ	Bin Store Enlarged.
C01	02/07/21	JSJ	Updated to 'Construction Issue'.



Client: Primary Healthcare Properties

Project Title: Refurbishment of 175 Preston Road Brighton

Drawing Title: Bin Store Layout

Drawing Status: Construction

Scale(s): 1:20	Original Paper Size: A1
Drawn By: JSJ	Date: 14.08.20
Checked By (if applicable):	Date:

Approved Reference: P183-BRP-00-00-DR-A-5008-C01