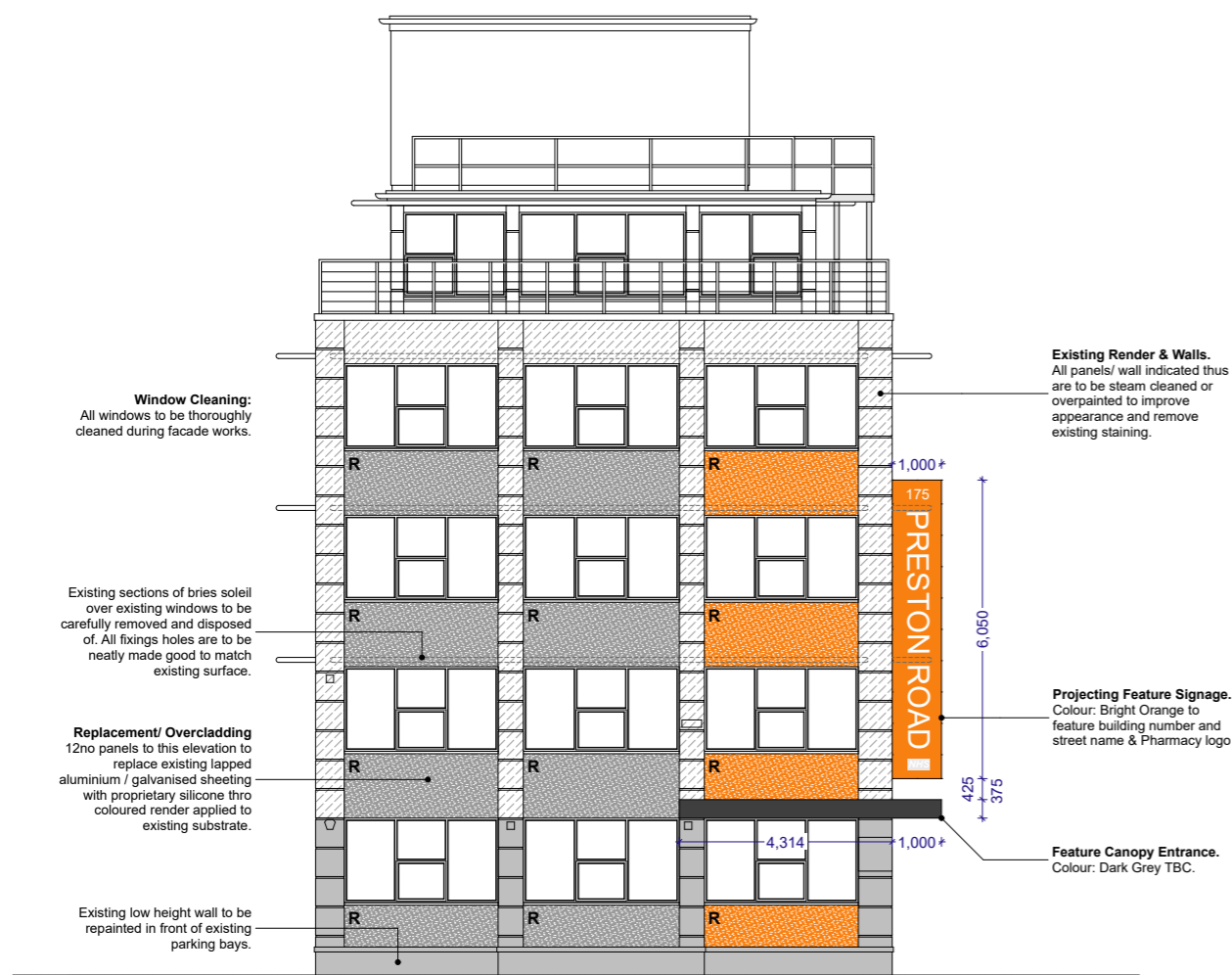
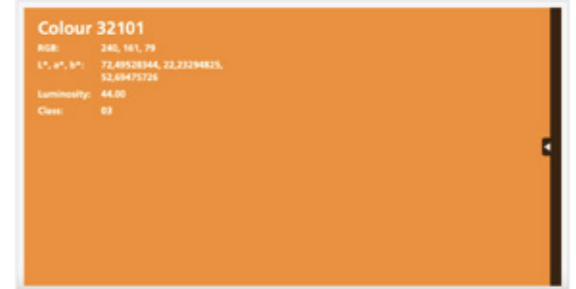


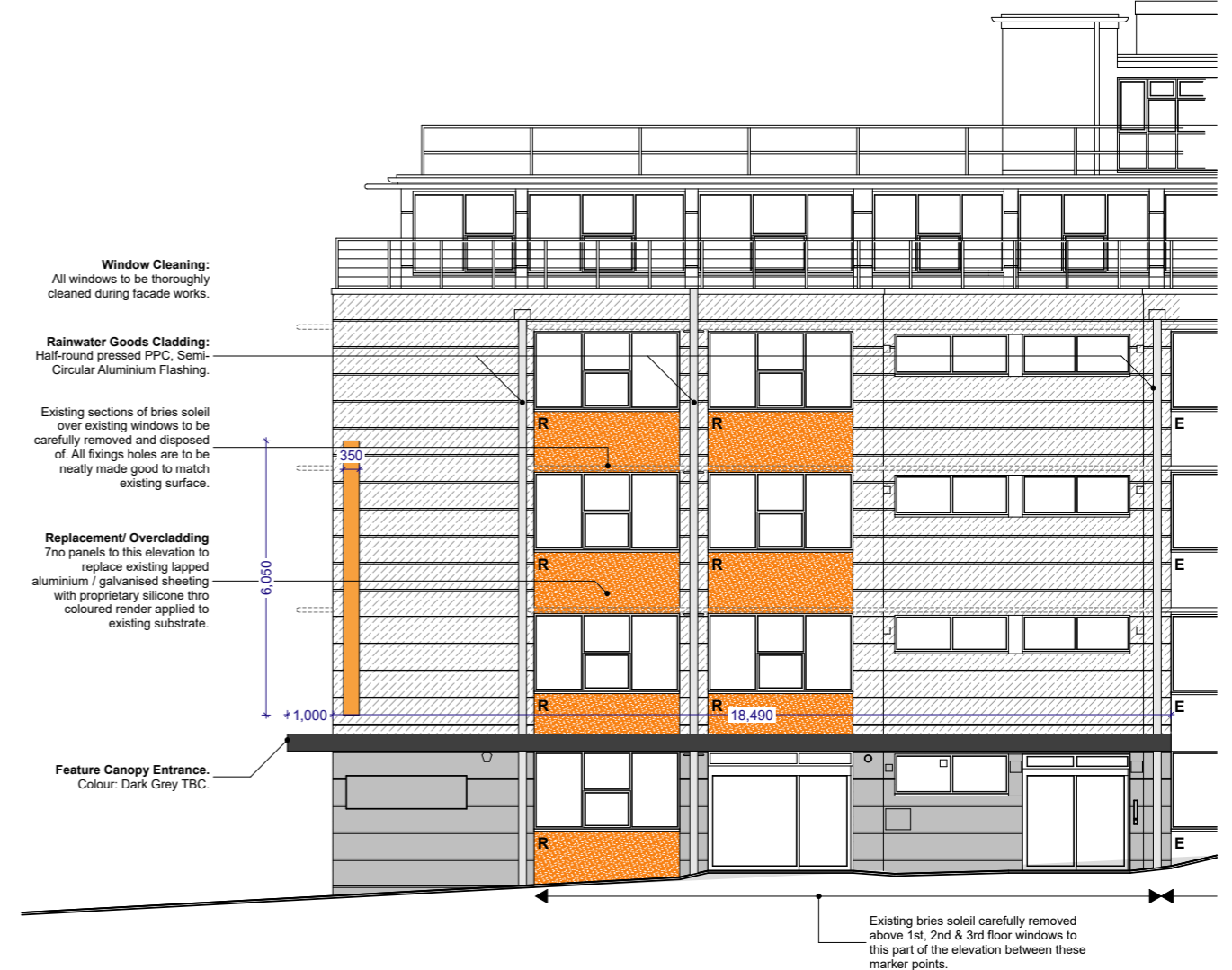
**175 PRESTON ROAD**

PROJECTING SIGN

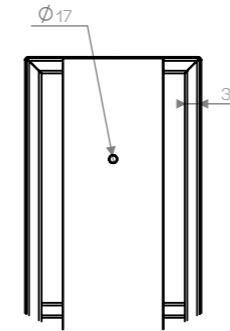
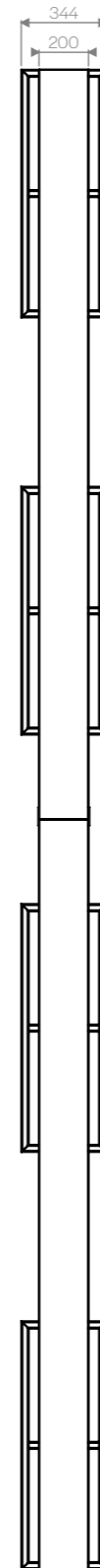
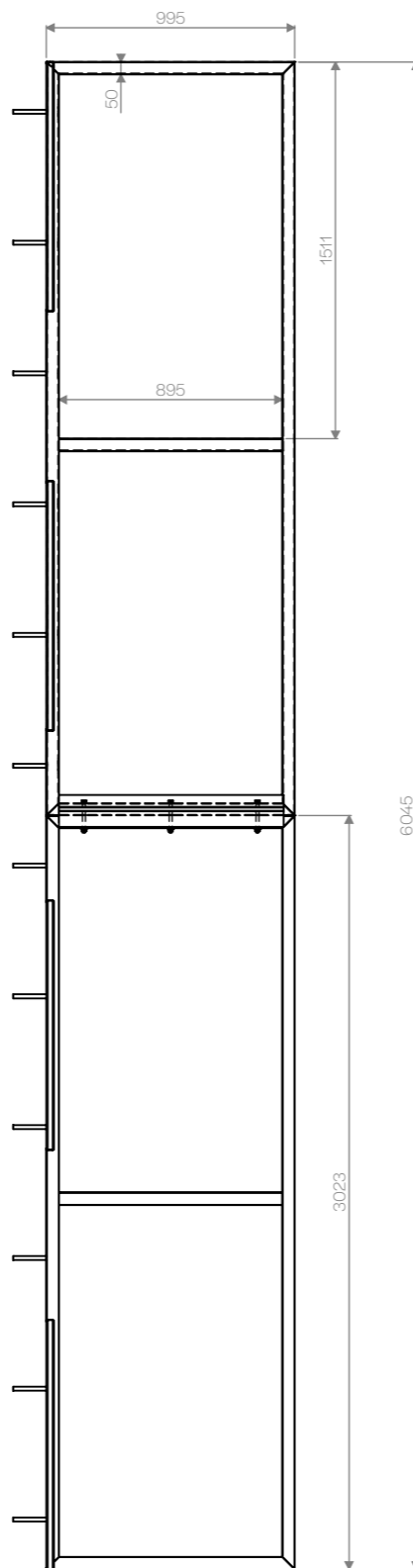
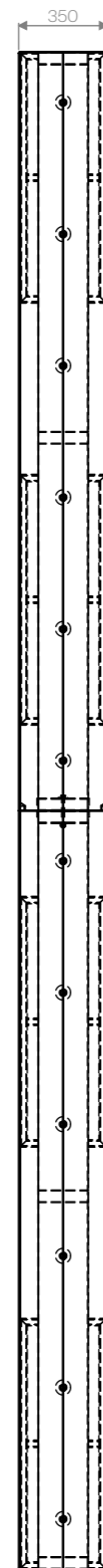
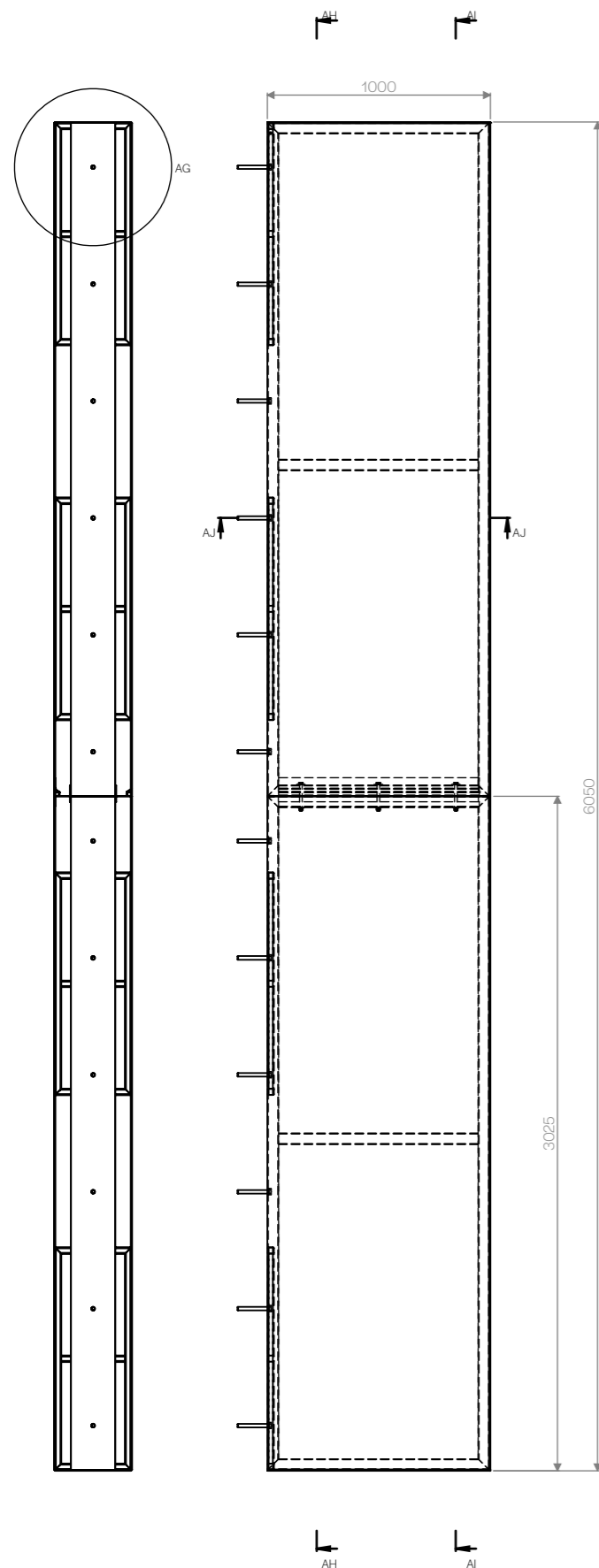
VERSION 01 - 10.05.2022



Proposed East Elevation  
Scale 1:150 @ A3



Proposed North Elevation  
Scale 1:150 @ A3



DETAIL AG  
SCALE 1:15

MASS PROPERTIES OF 175 PRESTON ROAD  
PROJECTING SIGN  
CONFIGURATION: DEFAULT  
COORDINATE SYSTEM: - DEFAULT -

MASS = 185758.81 GRAMS

VOLUME = 69103589.78 CUBIC MILLIMETERS

SURFACE AREA = 49704793.95 SQUARE  
MILLIMETERS

CENTER OF MASS: (MILLIMETERS)

X = 518.89

Y = -0.78

Z = 0.00

PRINCIPAL AXES OF INERTIA AND PRINCIPAL  
MOMENTS OF INERTIA: (GRAMS \* SQUARE  
MILLIMETERS)

TAKEN AT THE CENTER OF MASS.

IX = (0.00, 1.00, 0.00) PX =

28890756363.01

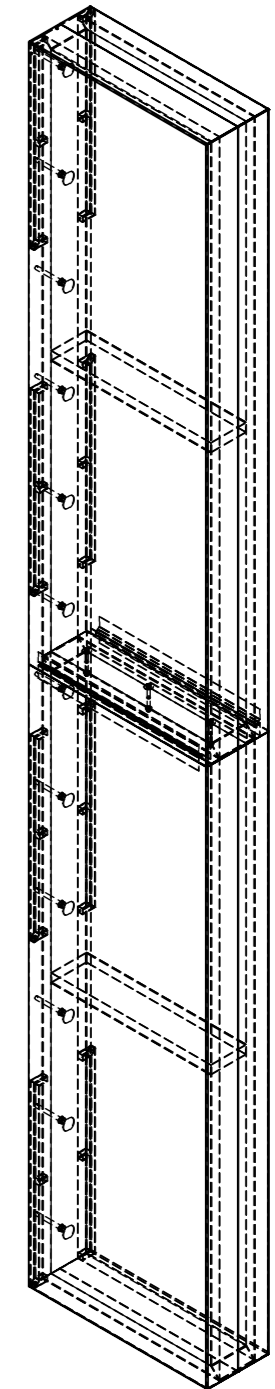
IY = (-1.00, 0.00, 0.00) PY =

607766310916.08

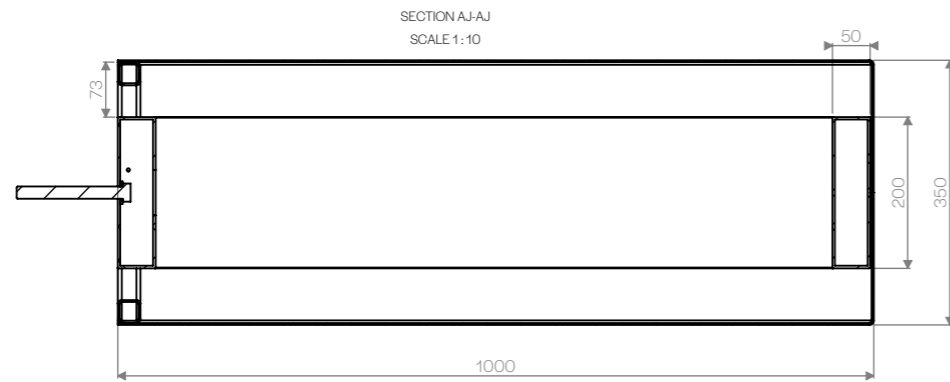
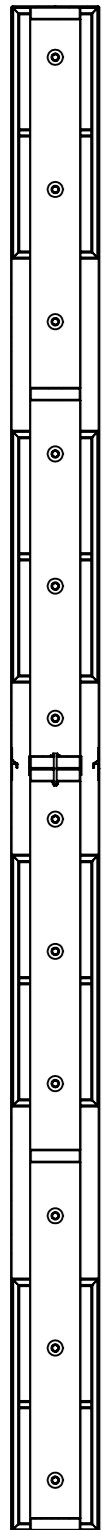
IZ = (0.00, 0.00, 1.00) PZ =

630254606365.88

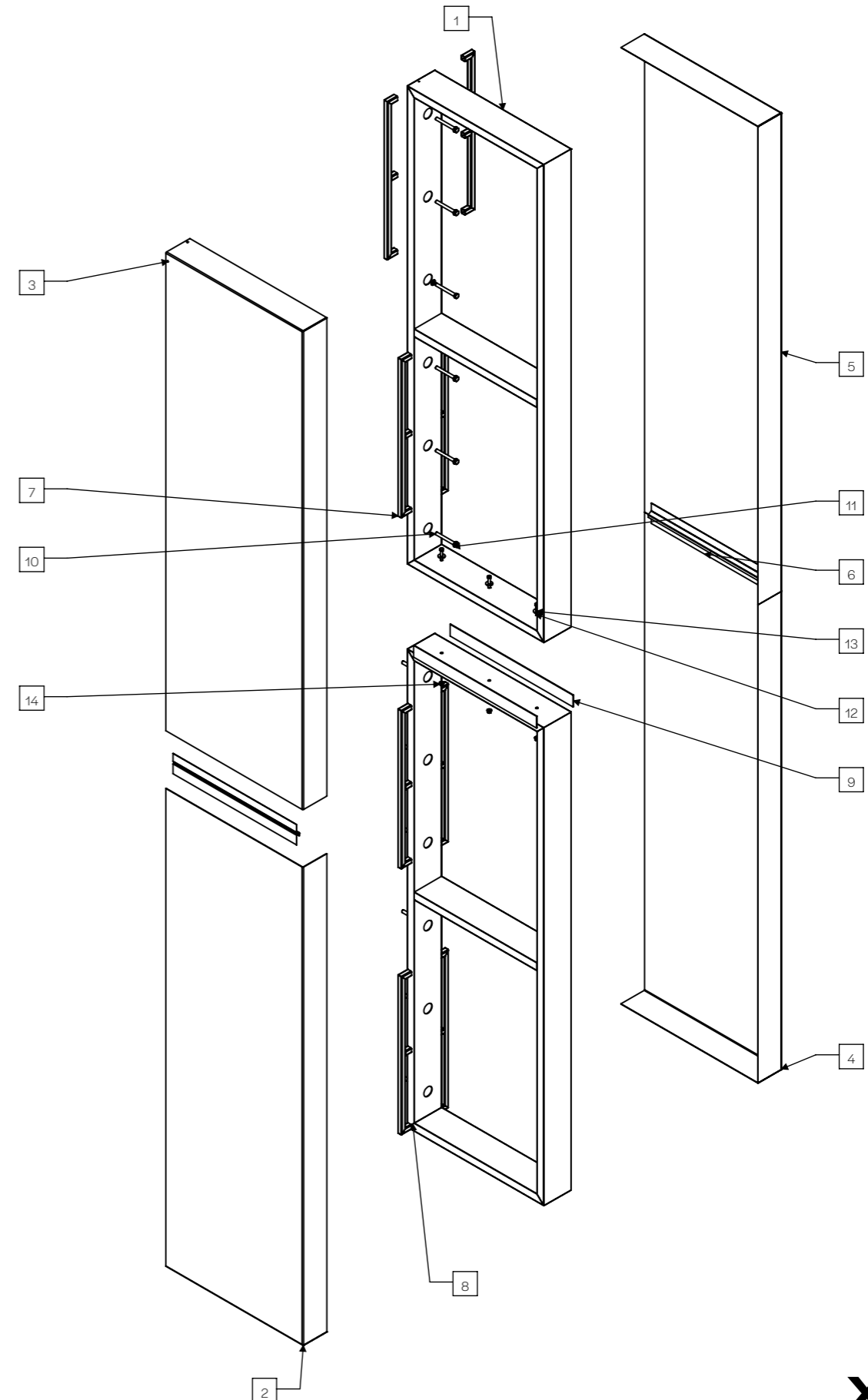
186 Kg



SECTION A-A



ITEM NO.	PART NUMBER	QTY.
1	INTERNAL FRAMEWORK 200x50x3.3mm Aluminium	1
2	ALUMINIUM FRONT TRAY BOTTOM 2.5mm Aluminium	1
3	ALUMINIUM FRONT TRAY TOP 2.5mm Aluminium	1
4	ALUMINIUM REAR TRAY BOTTOM 2.5mm Aluminium	1
5	ALUMINIUM REAR TRAY TOP 2.5mm Aluminium	1
6	STANDARD ALUMINIUM JOGGLE 3mm Aluminium	2
7	SIDE FIXING BOX SECTION FRAME	8
8	INTERNAL FRAMEWORK BOTTOM 200x50x3.3mm Aluminium	1
9	WELDED PLATE 4mm Aluminium reinforce plate welded to bottom FW	2
10	ISO 4016 - M16 X 140 X 44-WN	12
11	WASHER ISO 7089 - 16	12
12	ISO 4016 - M12 X 120 X 30-WN	3
13	WASHER ISO 7093 - 12	3
14	ISO - 4161 - M12 - N	3

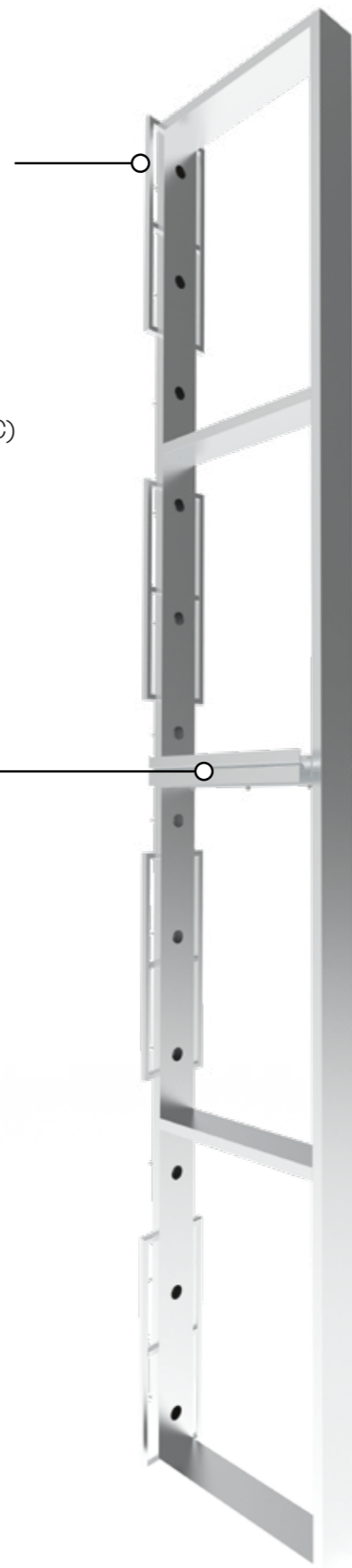




25mm Aluminium box section welded to main framework to add extra support and fixing points to the side returns

2.5 Aluminium panel painted Bright Orange RAL 1028 (Colour TBC) matt finish with vinyl decals applied to the face

Aluminium Panel joggle



M16 threaded rod chemically fixed (Fixing method to be confirmed)

M12 bolts 8.8 Grade connecting the framework sections

