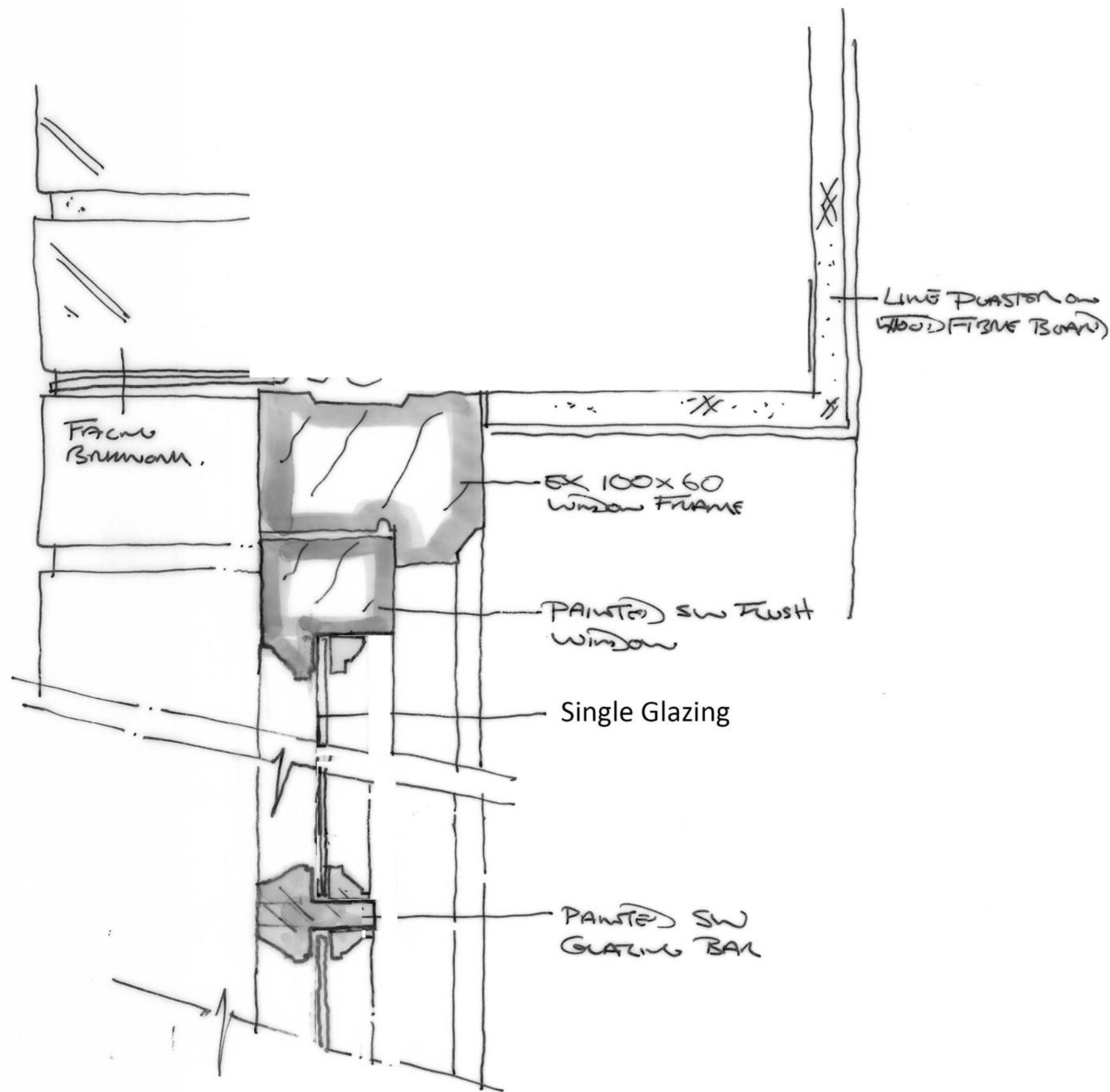
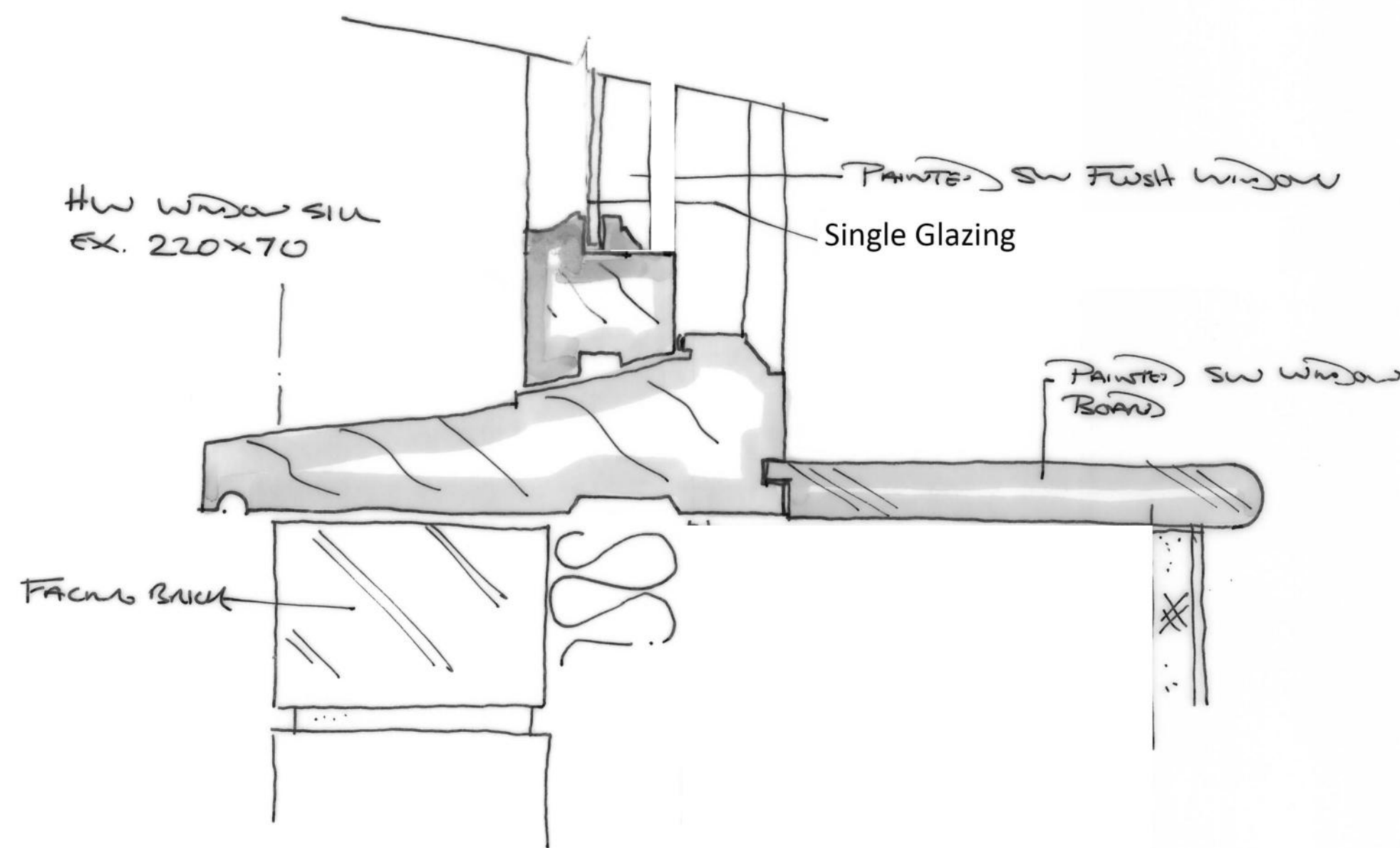


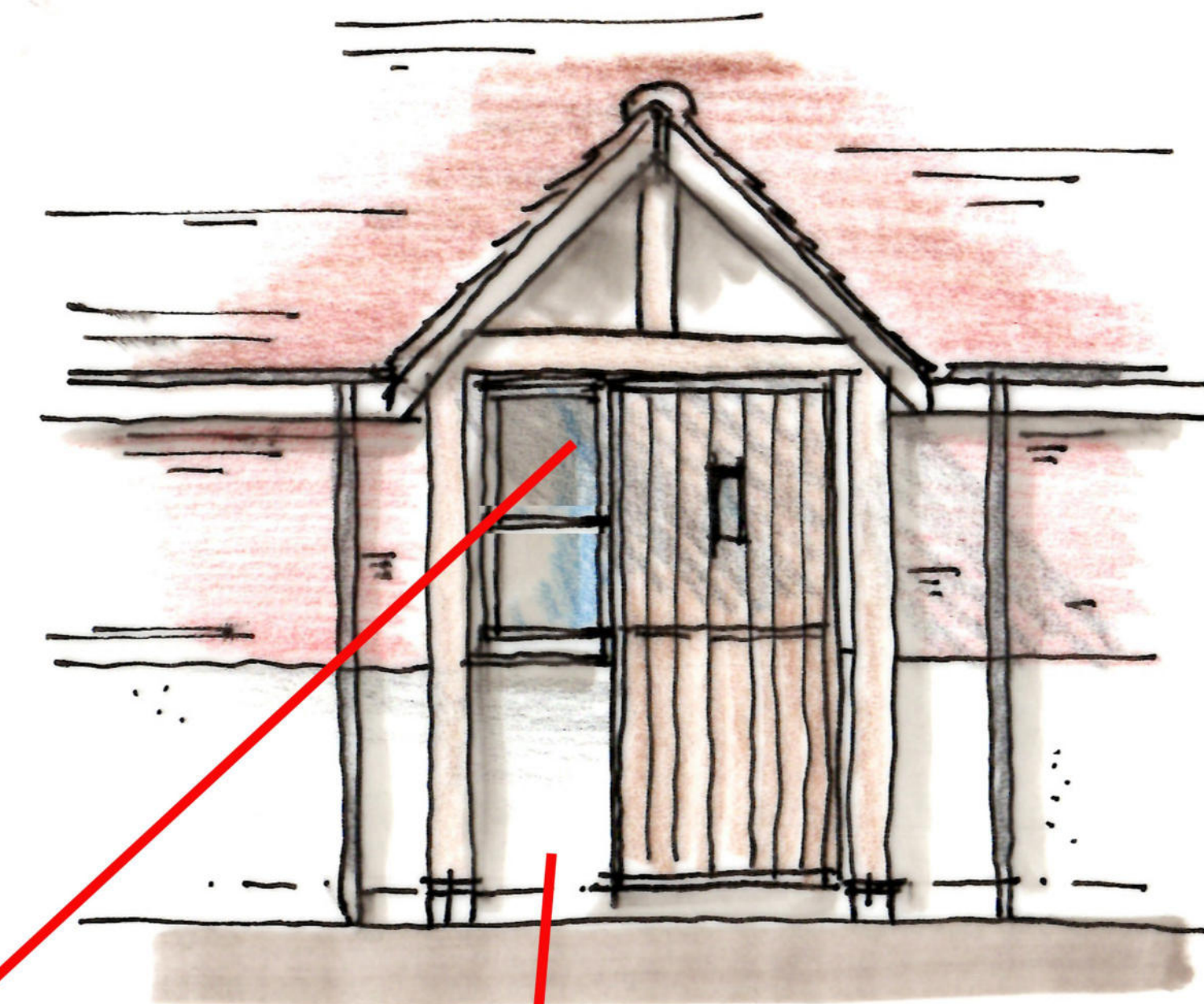
ANDY  
APRIL 2022



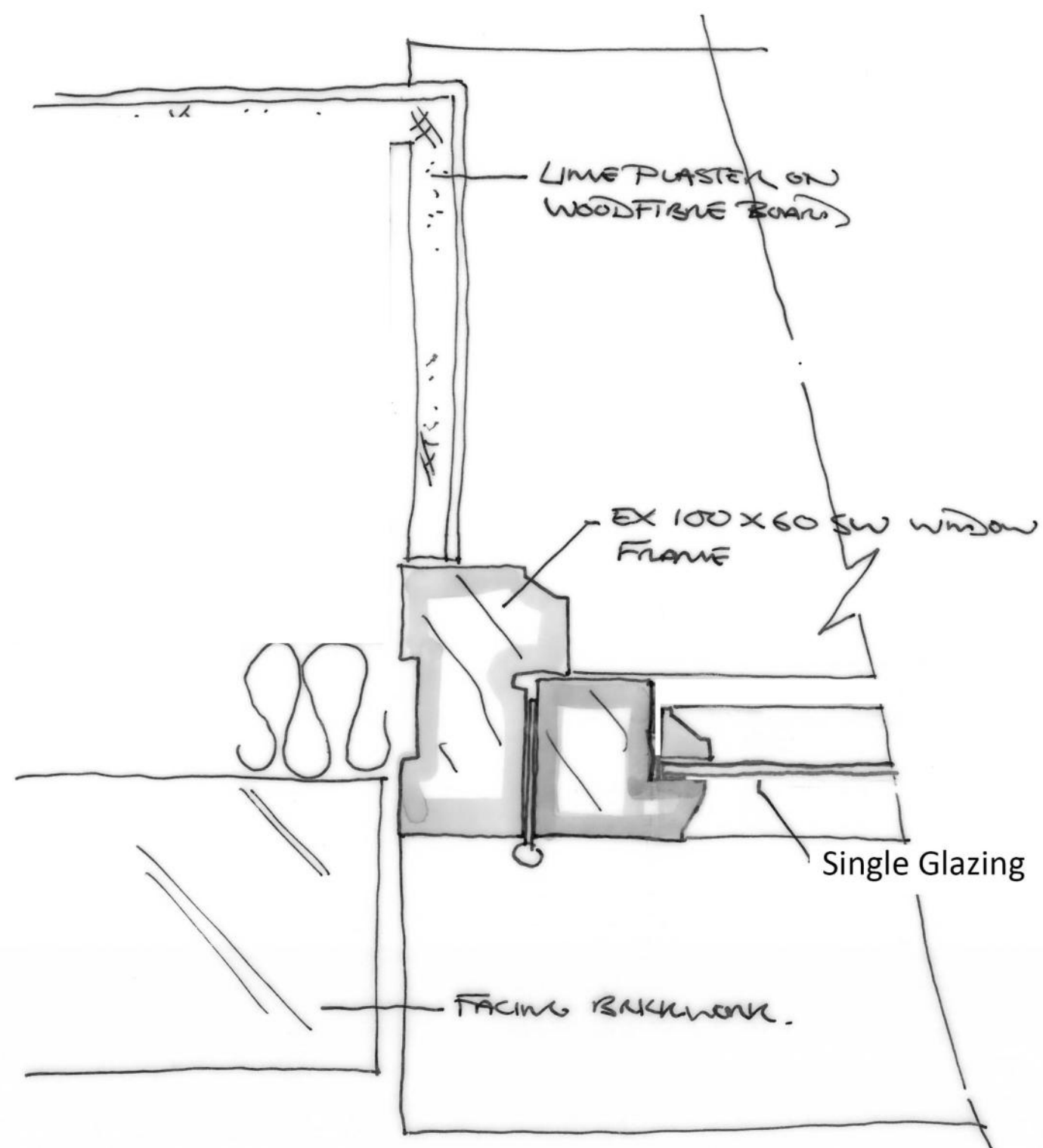
Proposed Window Head Detail 1:2



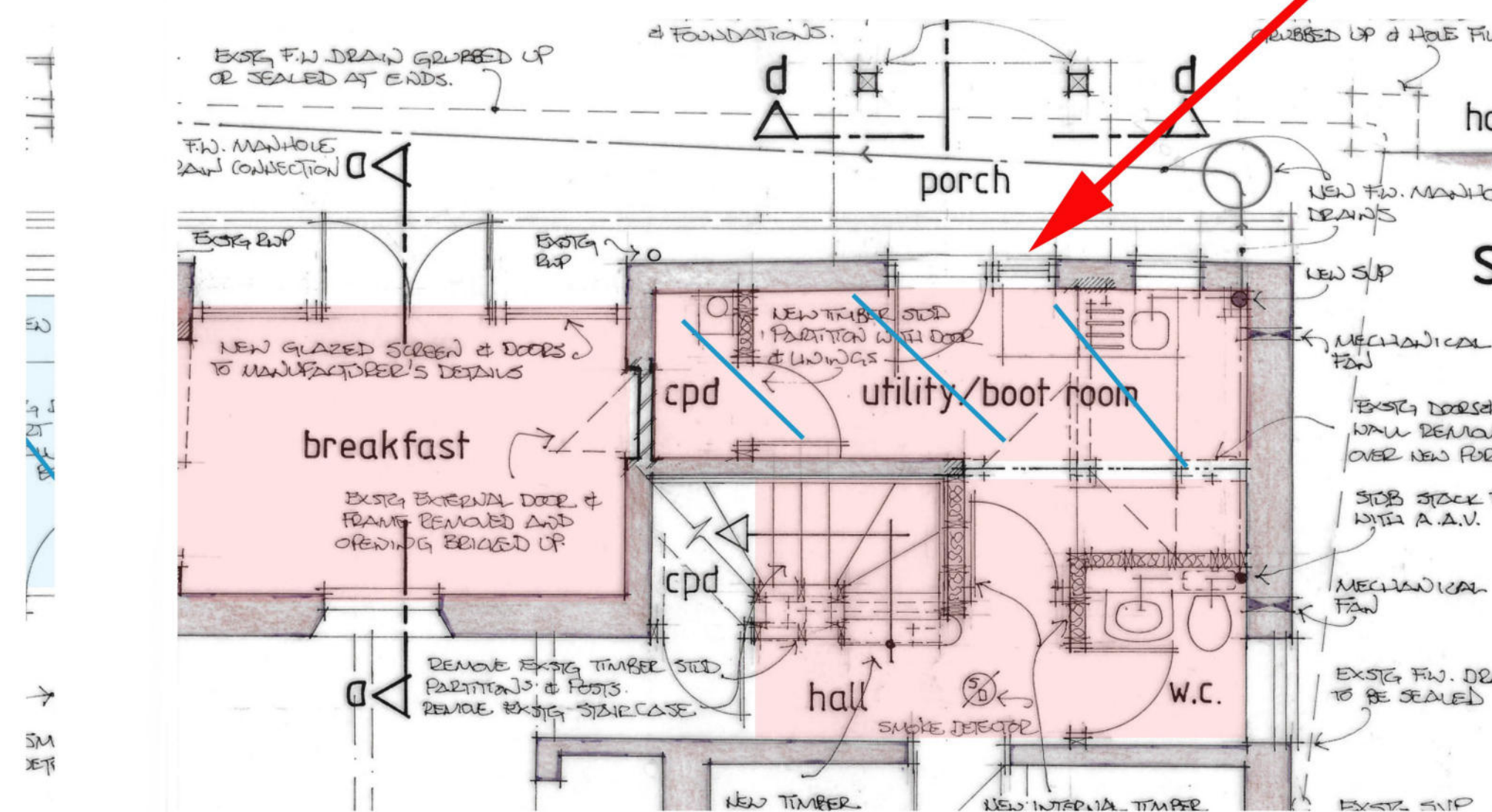
Proposed Window Sill Detail 1:2



Part Side Elevation showing Flush casement window



Proposed Window Jamb Detail 1:2



Extract Proposed Utility Entrance Plan



Existing Window to be replaced with door and window

# Timber Flush Casement Windows 1:2 Details

PRESTON COTTAGE, LONGPARISH HAMPSHIRE - MATERIALS

REVISION	DATE	AMENDMENTS
A	APRIL 2022	LB + PLANNING APPLICATION

SCALE BAR - 1:2

ALL FIGURED DIMENSIONS ARE TO BE TAKEN IN PREFERENCE TO SCALED DIMENSIONS AND ANY INACCURACIES ARE TO BE REPORTED TO THE ARCHITECT. DIMENSIONS TO BE CHECKED ON SITE BEFORE ANY WORK IS PUT IN HAND OR PREFABRICATED. COPYRIGHT OF THIS DRAWING IS RETAINED BY THE ARCHITECT AND IT MUST NOT BE REPRODUCED WITHOUT THEIR WRITTEN CONSENT.

**PLANNING ISSUE**  
**PROPOSED UTILITY ENTRANCE**  
**FLUSH CASEMENT WINDOW**  
**MATHEWSON WATERS ARCHITECTS**  
 The Old Surgery  
 Crowlie Road - Lambourn  
 Berkshire - RG17 8NR  
 enquiries@mw-architects.co.uk  
 01286 731211  
 RIBA #  
 21029 116A