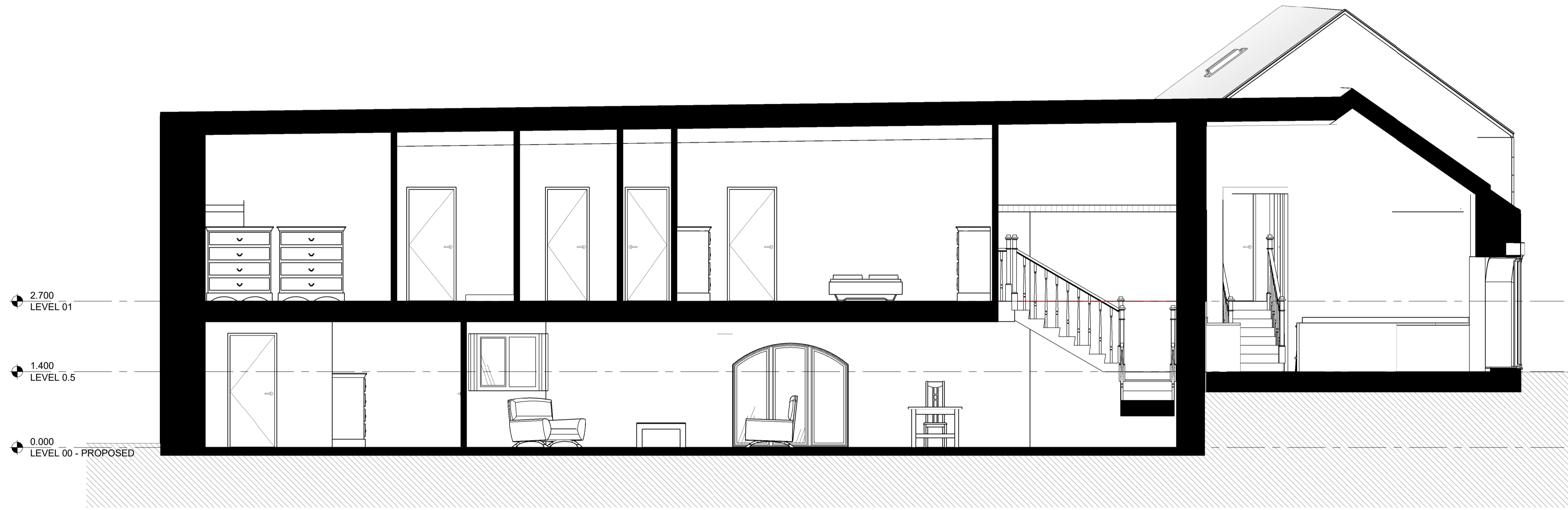
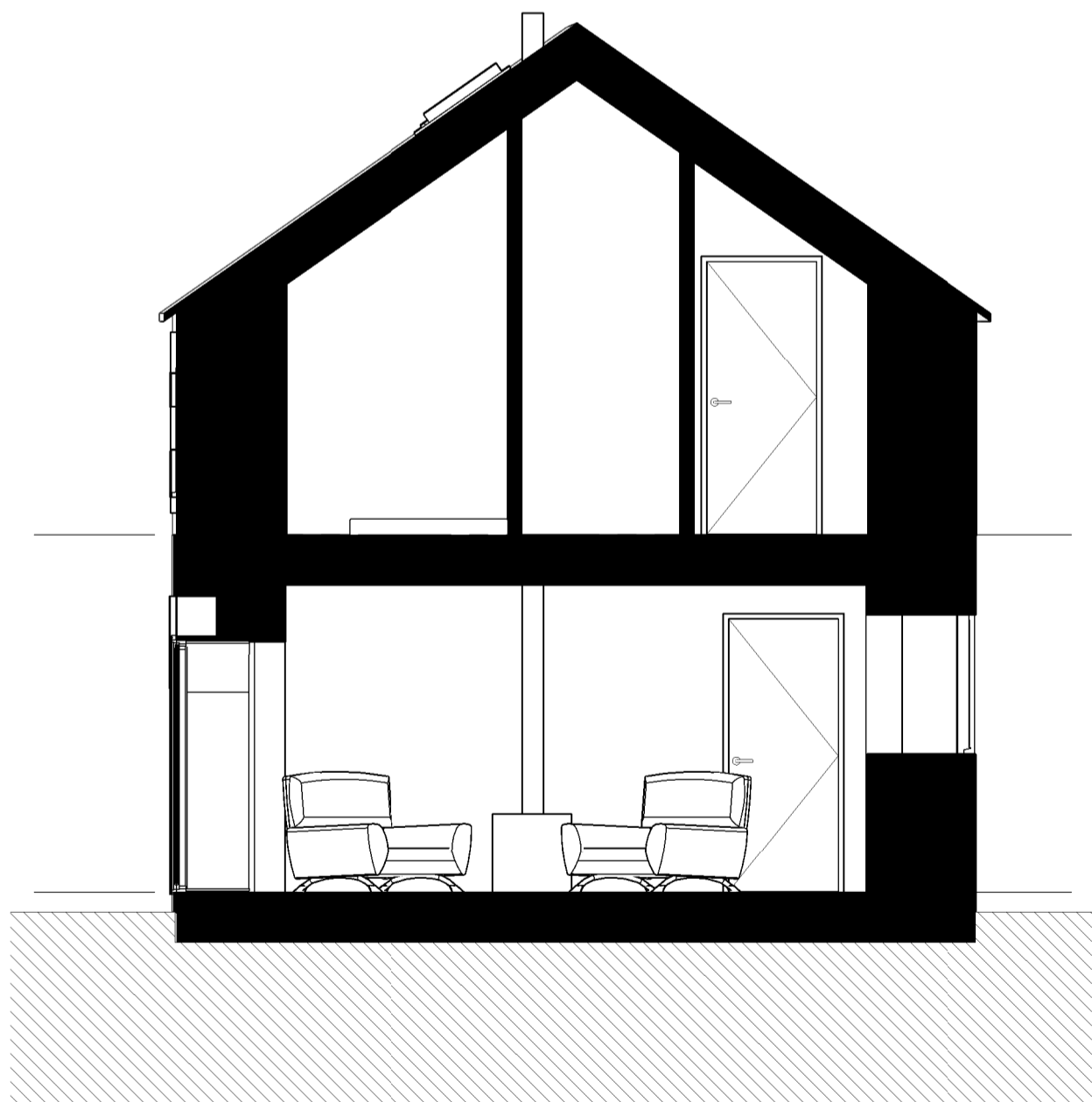


ISO A1 - 58mm x 84mm

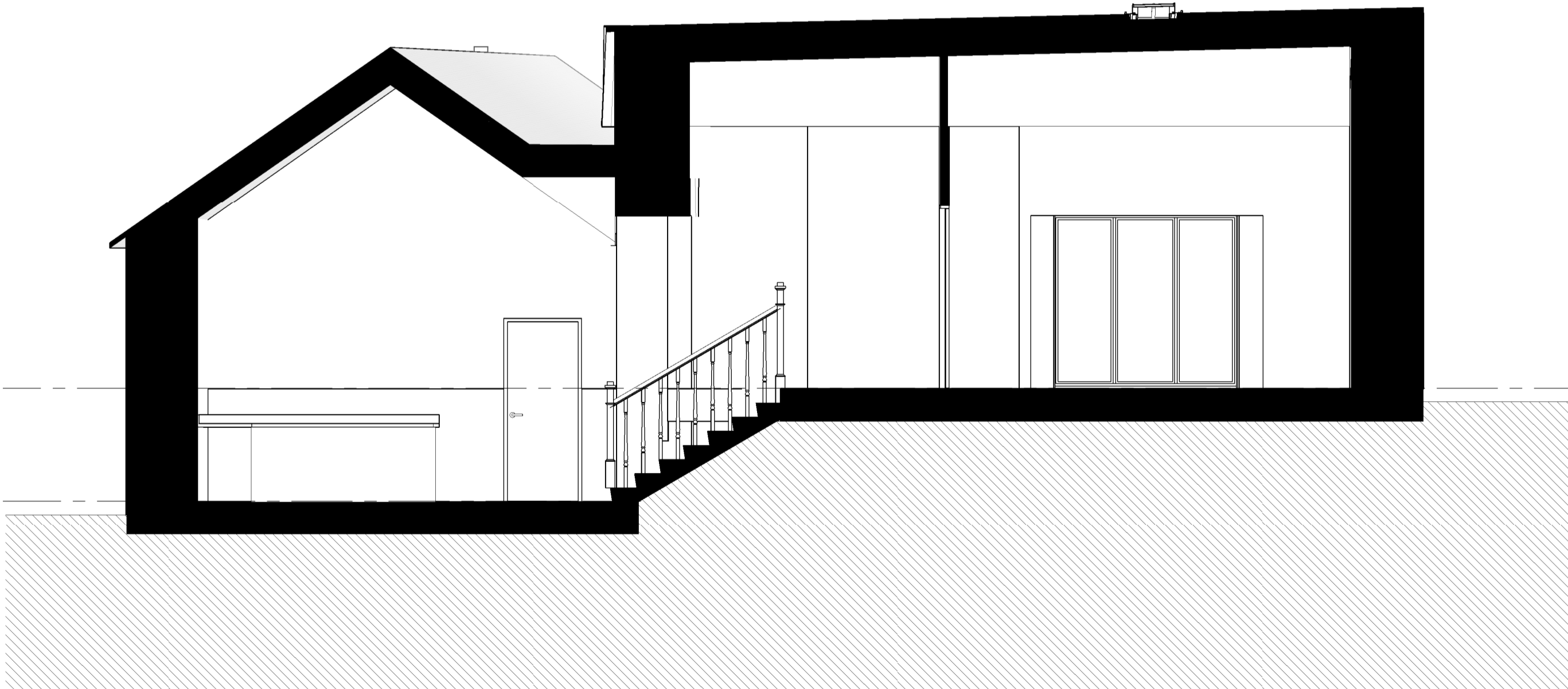
| DATE | REVISION | REV | DR | CH |
|----------|---------------------------------------------------------------------------------------|-----|----|----|
| 11.02.22 | STAIR OPENINGS TO FF DISCOUNTED FROM GIFA CALCULATION - ISSUE FOR PLANNING SUBMISSION | P01 | ST | SB |
| | | | | |
| | | | | |
| | | | | |
| | | | | |
| | | | | |
| | | | | |
| | | | | |
| | | | | |
| | | | | |



SECTION 01



SECTION 02

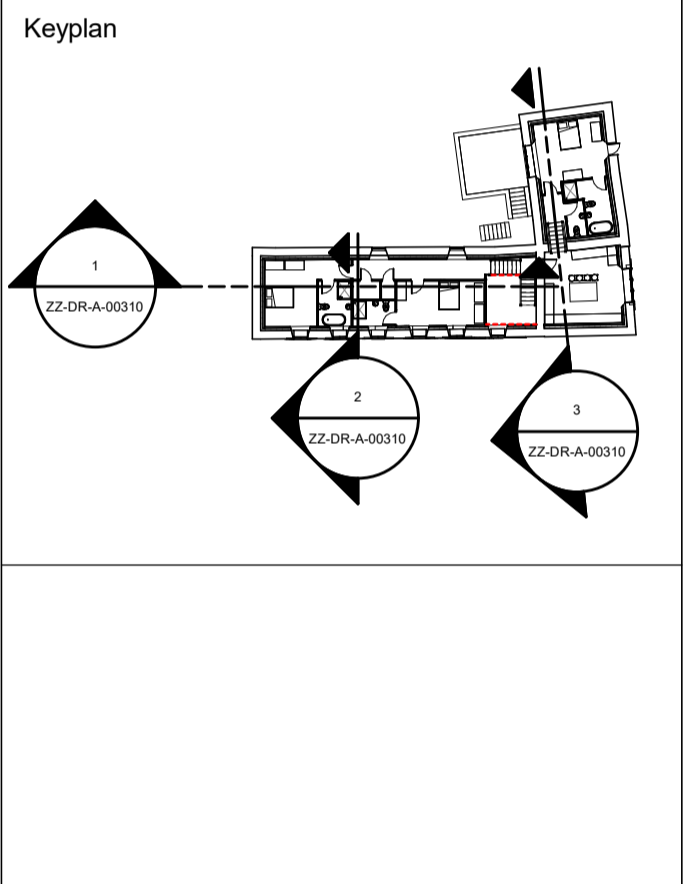


SECTION 03

This drawing has been prepared solely for the use of JONATHAN ELKINGTON and there are no representations of any kind made by NORR Consultants Limited to any party with whom NORR Consultants Limited has not entered into a contract. This drawing must not be used, reproduced or revised without written permission.

This drawing shall not be used for construction purposes until a "Ax - APPROVED FOR STAGE X" status appears in the Sheet Status.

Constructors must only work to figured dimensions which are to be checked on site. Do not scale from hard copy drawings.



NORR
 NORR Consultants Limited.
 An Ingenium International Company

Percy House, 8th Floor Percy Street,
 Newcastle NE1 4PW
 England, UK
 norr.com

| | |
|------------------------------------------|------------------|
| Drawn ST | Date 07.02.22 |
| Checked SB | Date 07.02.22 |
| Scale As indicated @ A1 | |
| Client JONATHAN ELKINGTON | |
| Project GUNNERTON | |
| Drawing Title GA SECTIONS - SHEET 1 | |
| Sheet Status S4 - FOR APPROVAL | |
| Project No. IANC21-0050 | |
| Drawing No. GNF-NOR-B3- ZZ-DR-A-00310 | Rev. P01 |

