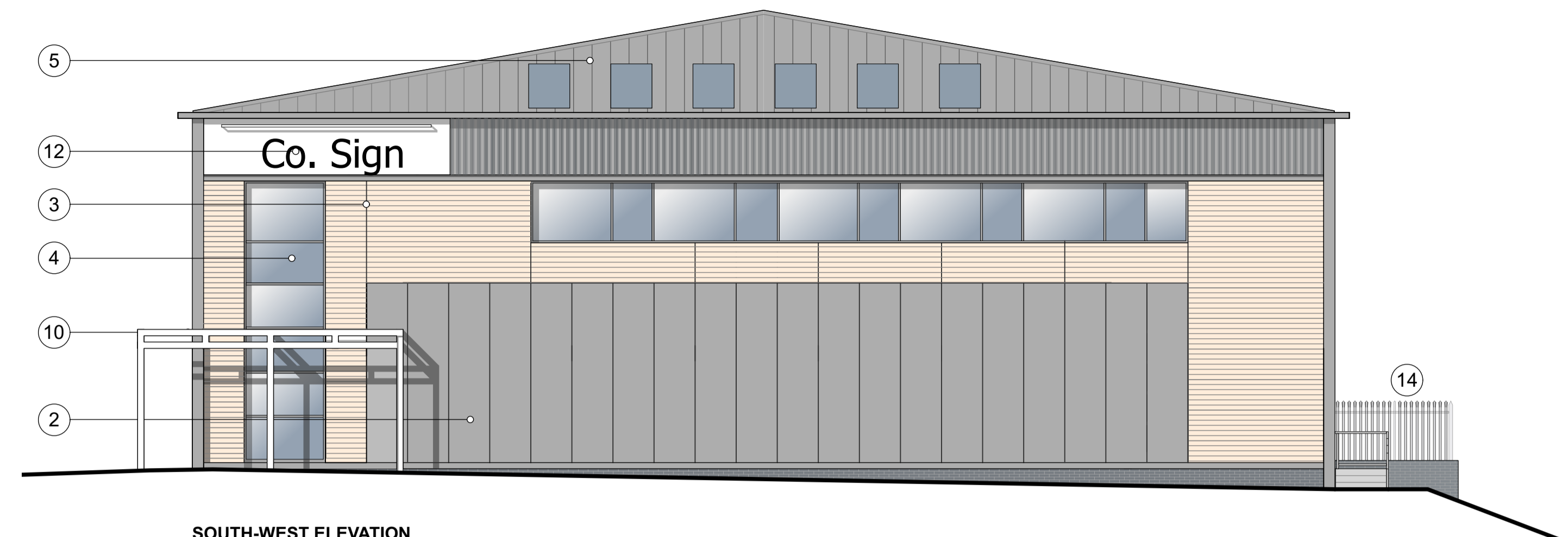
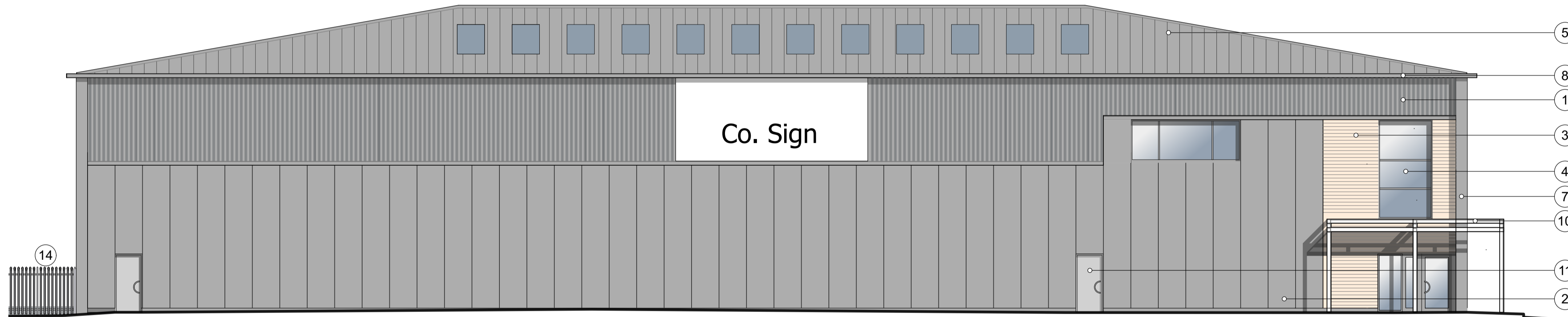


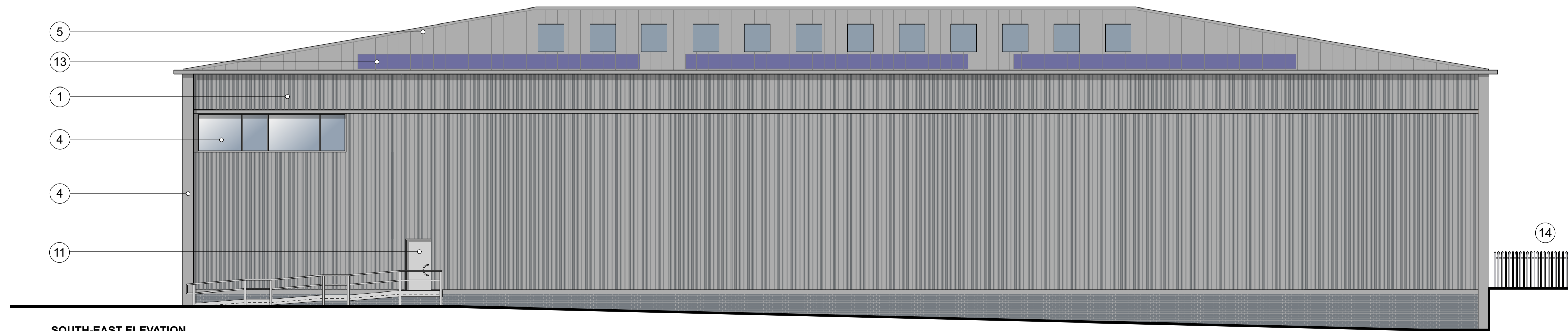
NORTH-EAST ELEVATION



SOUTH-WEST ELEVATION



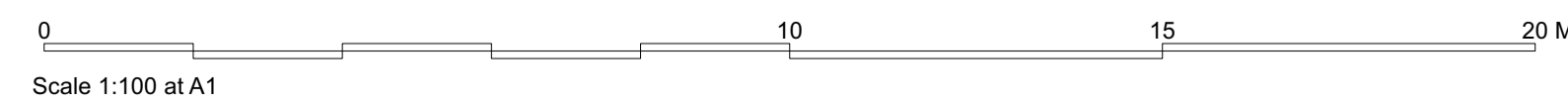
NORTH-WEST ELEVATION



SOUTH-EAST ELEVATION

MATERIALS FINISH

- ① Profiles metal cladding - Polyester powder coating finish (PPC)
- ② Micro-Rib cladding - PPC finish
- ③ Cedar timber cladding - natural finish
- ④ Aluminium double glazed windows - PPC finish
- ⑤ Standing seam metal roof - PPC finish
- ⑥ Sectional overhead shutter door - PPC finish
- ⑦ Projecting / recessed feature detail - PPC finish
- ⑧ Projecting eaves detail - PPC finish
- ⑨ Roof lights
- ⑩ Steel framed canopy with glazed infill - painted finish
- ⑪ Steel security door - PPC finish
- ⑫ Signage zone - illuminated
- ⑬ Potential Photo Voltaic array
- ⑭ 1.8m high palisade fence - Galvanised steel



Kendall Kingscott

Chartered Architects
Chartered Building Surveyors
Interior Designers
CDM Services

Project
Aldi, Totton, Salisbury Rd

Client
Aldi Stores Ltd

Scale Paper Size Filename
1:100 ISO A1 191152 - Planning.vwx

Glenworth Court, Lime Kirt Close
Stoke Gifford, Bristol BS34 8SR
+44 (0)117 931 2062
www.kendallkingscott.co.uk

P3	29/03/2022	KH	MW	External stairs omitted. Ramp access added and palisade fence shown.
P2	01/03/2022	DM	MW	Ground line update
P1	20/01/2022	KH	MW	Drawing issue
Rev	Date	By	App	Note

Drawing Title
Unit 2 - Proposed Elevations

Project Number	Drawing Number	Revision
200550-1450	P3	
Date	Drawn	Checked
20/01/2022	KH	MW
Purpose/Status	PLANNING	

Only to be used on the site for which designed. The electronic transmission of design information contained in this drawing is limited to the use of the software and hardware specified. We shall have no liability for any errors or inaccuracies arising therefrom. The production of amended or updated information from the user is entirely the responsibility of the user and Kendall Kingscott Ltd shall have no responsibility in respect thereof.