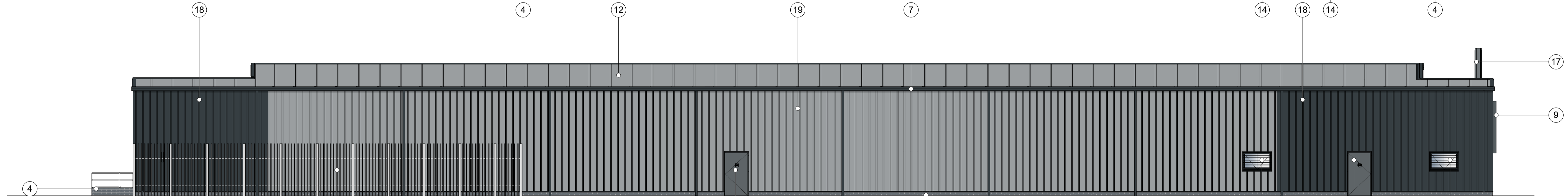
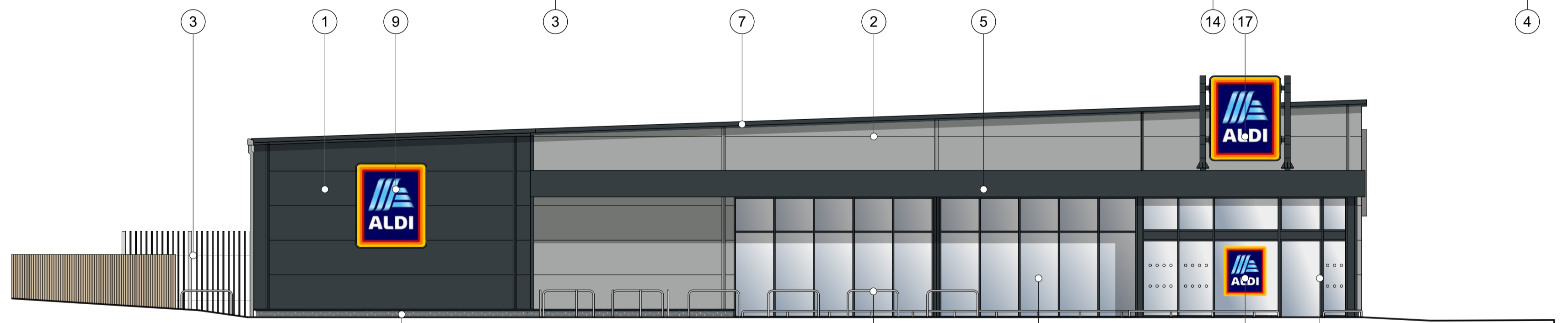


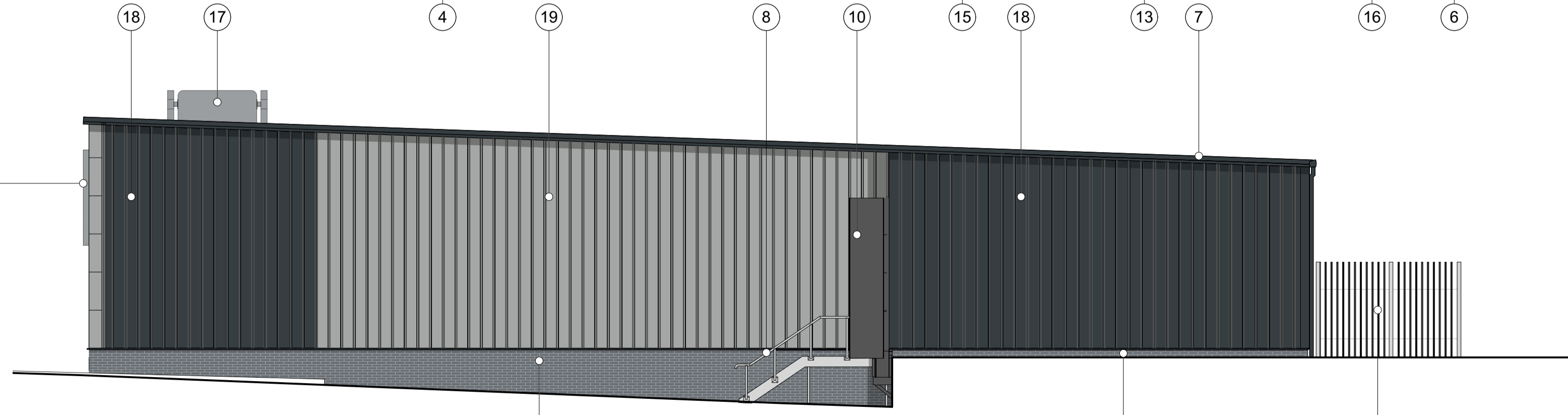
SOUTH EAST ELEVATION



NORTH WEST ELEVATION



SOUTH WEST ELEVATION




NORTH EAST ELEVATION

EXTERNAL FINISHES

- ① Kingspan KS1000MR anthracite grey cladding RAL 7016
- ② Kingspan KS1000MR metallic silver cladding RAL 9006
- ③ Galvanised mesh enclosure to refrigeration plant equipment with a lockable door
- ④ Brick plinth and low level walls. Blockleys Brick Ltd 'Charcoal' with tarmac Y14 (Black) coloured mortar
- ⑤ Canopy fascia, 3mm thick Aluminium panels with polyester powder coated finish, colour Anthracite RAL 7016
- ⑥ Entrance/exit lobby - Polyester powder coated aluminium (RAL 7016 anthracite)
- ⑦ Fascia. Powder coated aluminium to BS6496, colour anthracite grey RAL 7016
- ⑧ Handrails - Galvanised tubular steel
- ⑨ Wall mounted internally illuminated logo sign - subject to separate advertisement consent application
- ⑩ Sectional overhead door - pvf coated steel (RAL 7016)
- ⑪ Window - High level fixed lights. Frame colour RAL 7016
- ⑫ Roof: Kingspan KS1000TD 71mm (core) thickness composite roof panels on purlins. All to anthracite grey RAL 7016.
- ⑬ Shopfronts - polyester powder coated Aluminium (RAL 7016)
- ⑭ Steel escape doors - polyester powder coated colour grey (RAL 7016) (frame colour RAL 7016)
- ⑮ Trolley bay rails - satin finish stainless steel
- ⑯ Vinyl ALDI logo sign applied to glazing - subject to separate advertisement consent application
- ⑰ ALDI sign by signage contractor
- ⑱ Kingspan KS1000RW anthracite grey cladding RAL 7016 (non-customer facing elevation only)
- ⑲ Kingspan KS1000RW metallic silver cladding RAL 9006 (non-customer facing elevation only)





Kendall Kingscott
Chartered Architects
Chartered Building Surveyors
Interior Designers
CDM Services

Project
Aldi, Totton, Salisbury Rd

Client
Aldi Stores Ltd

Scale: 1:100 ISO A1
Paper Size: 191152 - Planning.vwx

Project Number: **200550-1400**

Drawing Number: **P5**

Date: 20/04/21
Drawn: JKC
Checked: MW
Purpose/Status: **PLANNING**

Rev: P5
Date: 01/03/2022
By: MW
Note: DM
Ground line update

Rev: P4
Date: 04/02/2022
By: MW
Note: KH
Line store updates to elevations.

Rev: P3
Date: 05/08/2021
By: MW
Note: DM
Elevation Update, building moved south to retain existing tree

Rev: P2
Date: 25/06/2021
By: MW
Note: MS
Elevation orientation corrected

Rev: P1
Date: 24/06/2021
By: MW
Note: JKC
Drawing Issue

Check all dimensions and levels on site. Only to be used on the site to which designed. The electronic transmission of design information contained in this drawing is limited to internal use of the client and the design team only. It shall have no liability for any errors or omissions arising therefrom. The production of amended or updated information from the user is entirely the responsibility of the user and Kendall Kingscott Ltd shall have no responsibility in respect thereof.