

Any discrepancy to be reported to CA
 This drawing is ONLY intended to be used for the purpose stated at status below
 This drawing is not to be used, copied or disclosed by or to any unauthorised persons without prior written authorisation consent from SDA Architecture Ltd.
 Please refer elsewhere appropriately for all other consultants information to be read in conjunction with this drawing as necessary.

Project Information:

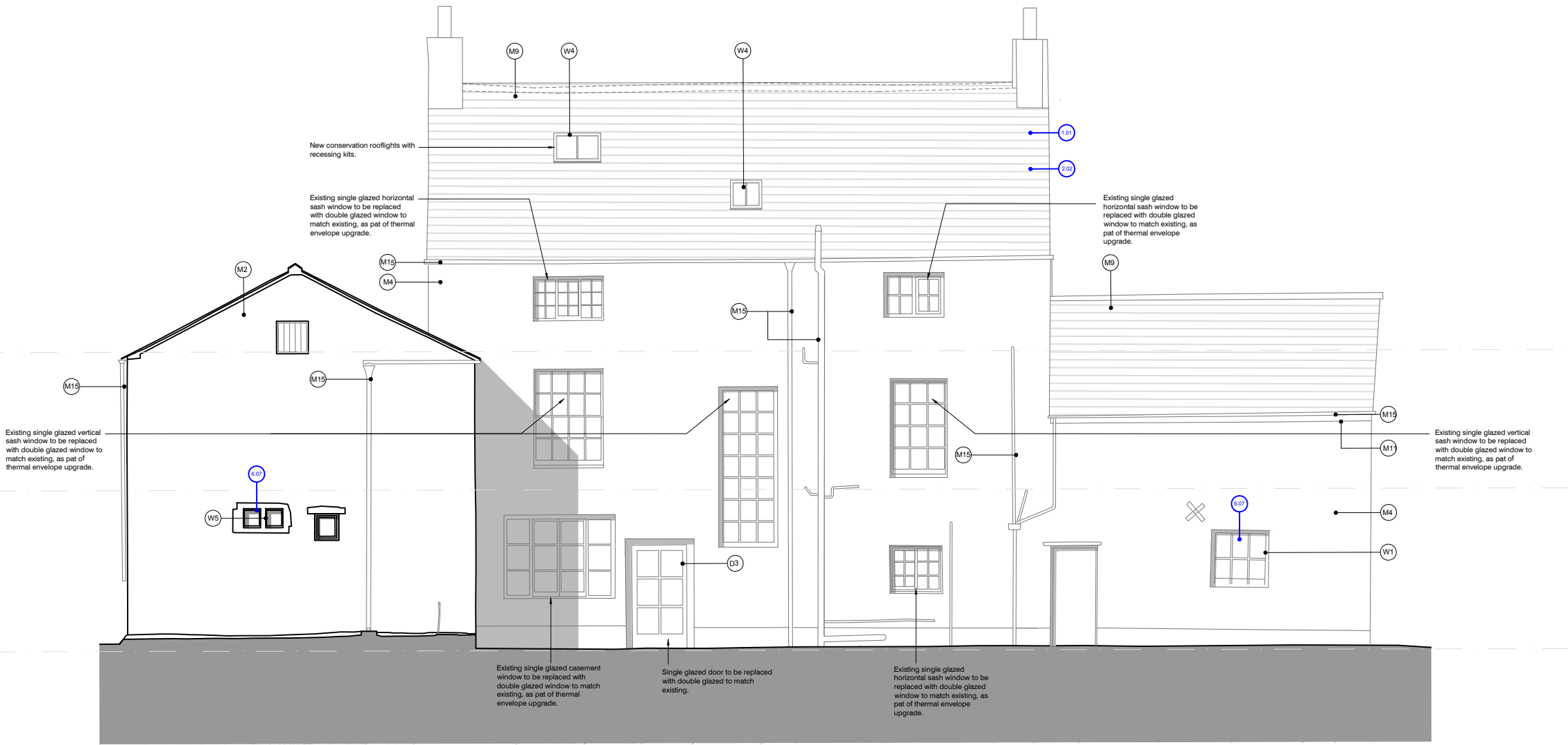
Project Reference: 370
 Project Title: Fisher House
 Project Address: Fisher house, Rivington Lane, Bolton, BL6 7SL

Drawing Information:

Drawn by: Jyh Checked: SH
 Sheet Size: A3
 Scale: 1:100
 Date: 11.11.2021
 Status: Planning
 Drawing Title: Proposed North-East Elevation
 Drawing Number: (E)4-13-PP Revision: F

Drawing Registry

Rev.	Date	Description	By
A	22.11.21	Drawing revised to client comments.	SH
B	02.12.21	Window Tags added.	SH
C	09.12.21	Dimensions removed.	SH
D	05.01.22	Materials legend added.	SH
E	14.01.22	Fabric legend added.	ZW
F	28.02.22	Revised for Planning	SH



Material Legend

- (M1) Red brick
- (M2) Stonework
- (M3) Stone plinth
- (M4) Inscribed white painted render
- (M5) White painted render
- (M6) Sandstone header / cill
- (M7) Sandstone Surround
- (M8) Stone Slates
- (M9) Natural Slate
- (M10) Black UPVC rainwater goods
- (M11) White painted timber fascia
- (M12) Lead flashing
- (M13) Retractable awning
- (M14) Dressed stone cill / header / quoins
- (M15) Black cast iron rainwater goods & SVP's.

- (M16) Charred timber cladding
- (M17) PPC Aluminium flashing RAL TBC.
- (M18) PPC Aluminium canopy, RAL TBC.

Door Legend

- (D1) Solid panelled timber door
- (D2) Single glazed painted timber door
- (D3) Sliding single glazed black painted timber garage door
- (D4) Vertical timber, ledged and braced door.
- (D5) Slimline aluminium double glazed sliding doors, RAL TBC.
- (D6) Painted timber louvered doors.

Window Legend

- (W1) White painted single glazed sash windows
- (W2) White painted fixed and opening casement windows / conservatory.
- (W3) Single glazed fanlight
- (W4) Rooflights
- (W5) Painted timber casement window
- (W6) White UPVC double glazed window

Notes Legend

- (X.XX) Indicates Jubb Clews reference as identified in Elemental Condition Appraisal.

