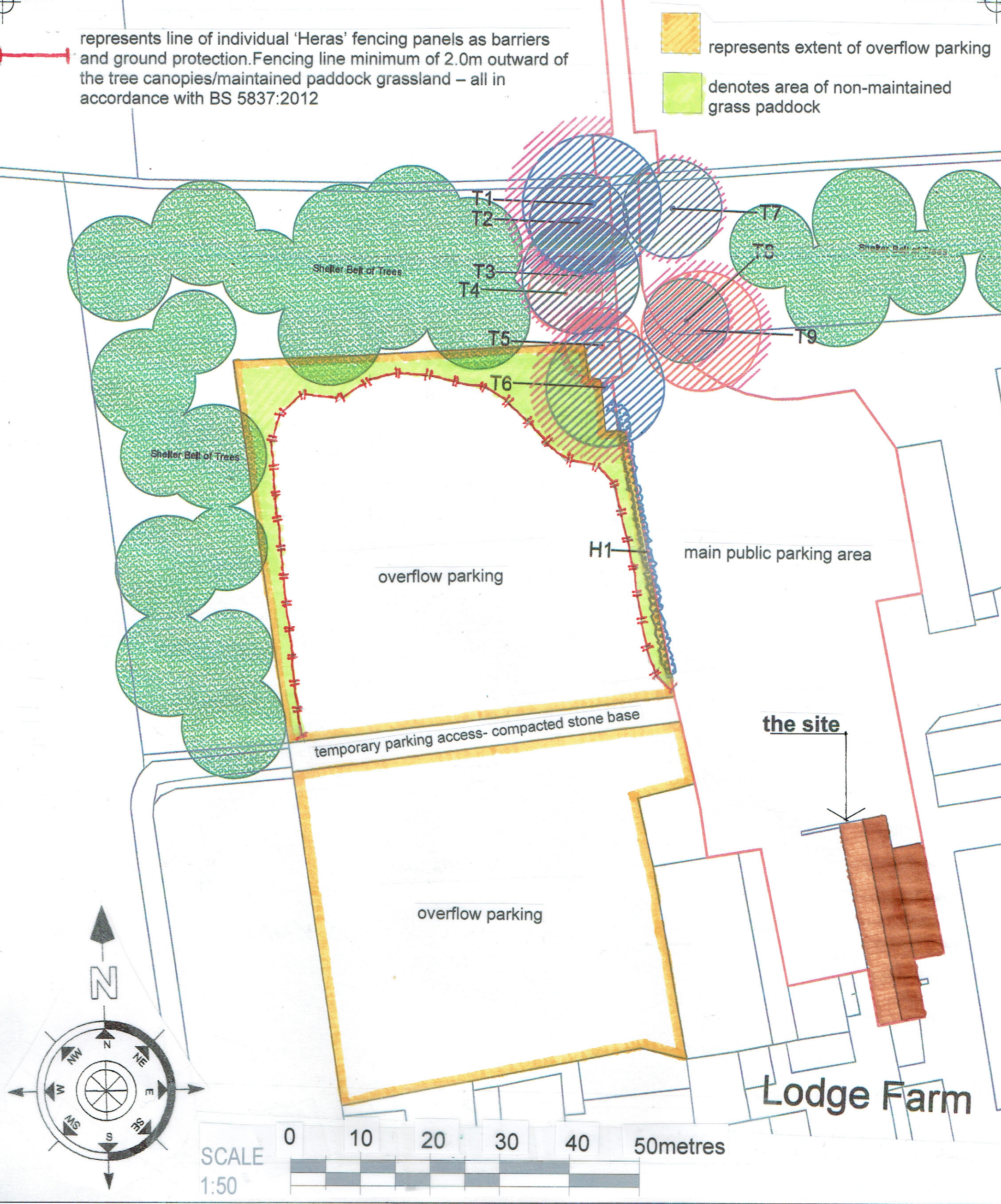


represents line of individual 'Heras' fencing panels as barriers and ground protection. Fencing line minimum of 2.0m outward of the tree canopies/maintained paddock grassland – all in accordance with BS 5837:2012

represents extent of overflow parking
denotes area of non-maintained grass paddock



025

PROPOSED CONVERSION & CHANGE of USE of EXISTING FORMER THRESHING BARN relating to PUBLIC PUMPKIN POINT of SALE at:- LODGE FARM, HEATH ROAD, COLEBY, LINCOLNSHIRE LN5 0AR. for C.A. Mottram & Sons 1:500 at A3

TREE PROTECTION DETAILS - overflow parking
Drg.No.KMD/LFC/2020/A3/025



this drawing is an extract of 'engie' arboricultural consultancy drg.No.TCP-01-210819