



dark grey standing zinc window box

black aluminium windows

black stained timber boarding panel sections

black stained timber boarding panel sections door

black aluminium windows

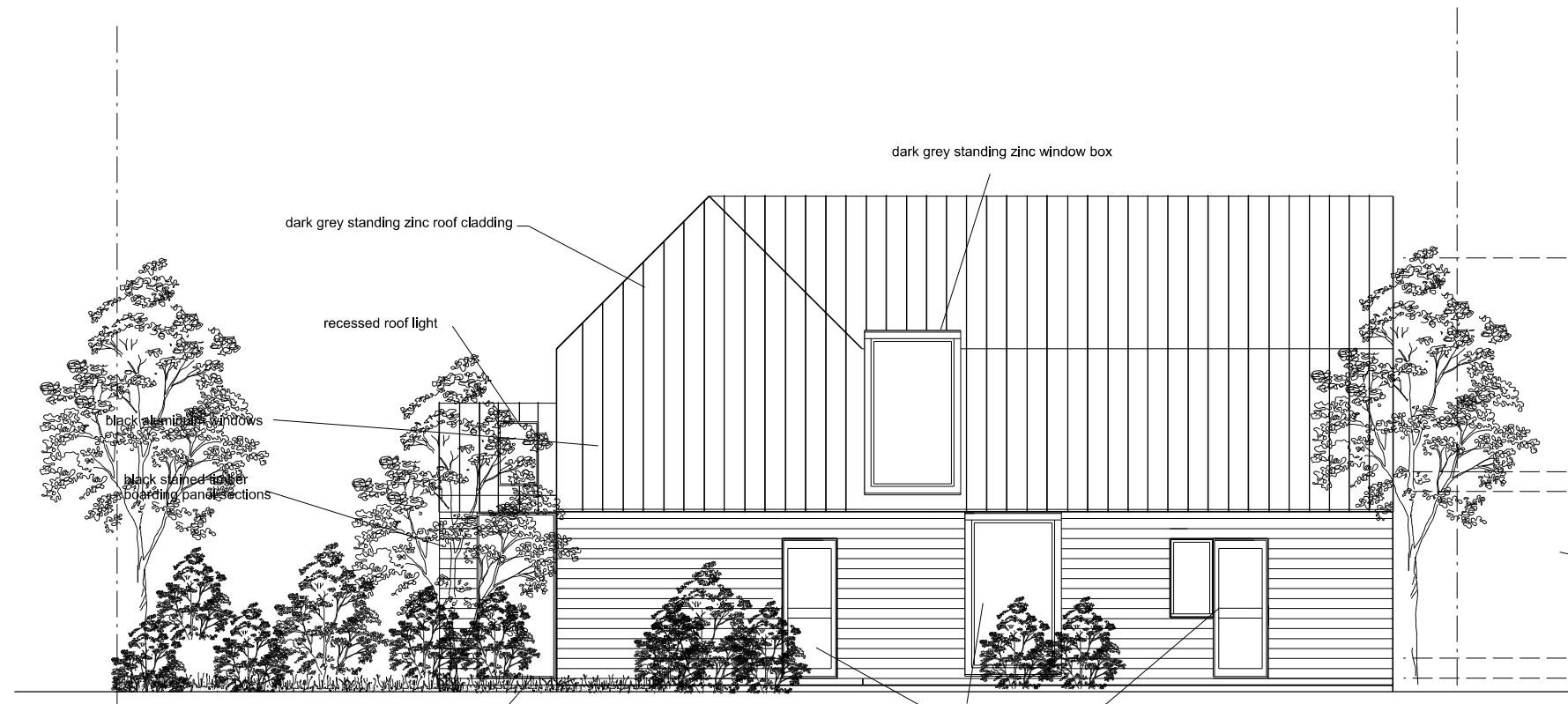
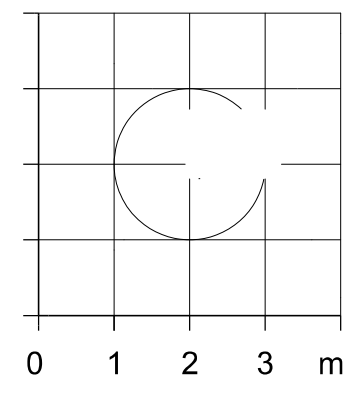
recessed roof light

dark grey standing zinc roof cladding

black stained timber boarding panel sections

solid entrance door set in black frame with obscure glass side lights

Proposed Front Elevation



dark grey standing zinc window box

dark grey standing zinc roof cladding

recessed roof light

black aluminium windows

black stained timber boarding panel sections

black aluminium windows

black aluminium windows/doors

black stained timber boarding panel sections

Proposed Rear Elevation

Revision

Project Title
Eastwick Hall Lane Site
Eastwick
Herts CM20 2QP

Drawing Title
New Dwelling

Proposed Front And Rear Elevation

Client
White Hart Developments

Scale
1:100@A3

Date
Jan 2022

Drg. No.
0572_00_101

Notes

All dimensions must be checked and NEO Architects are to be informed of any discrepancies prior to construction. This drawing and any of the details therein remain the copyright of NEO Architects.

NEO Architects
105a Park Road
New Barnet
EN4 9QR

Phone +44 (0) 20 33040480
Mobile 07802 237666

michael@neoarchitects.co.uk