

- Legend**
- 1 Brick facade
  - 2 Rendered facade
  - 3 Aluminium windows (Residential)
  - 4 Glazed balcony (Residential)
  - 5 PPC metal facade
  - 6 Principal entrance
  - 7 Secondary door
  - 8 Painted aluminium curtain walling (shop front)
  - 9 Painted aluminium glazed door
  - 10 Painted aluminium fixed panel (solid with letter box etc)
  - 11 Painted aluminium louvre panel
  - 12 Painted aluminium fascia /overpanel
  - Note** Fascia panel capable of adaption to receive additional louvres where required for kitchen extract etc.
  - 13 Signage by others (not part of this Application)
  - 14 Clear laminated glass (double glazed)
  - 15 Upstand / stallriser
  - 16 Painted aluminium solid door
  - 17 Painted aluminium solid panel

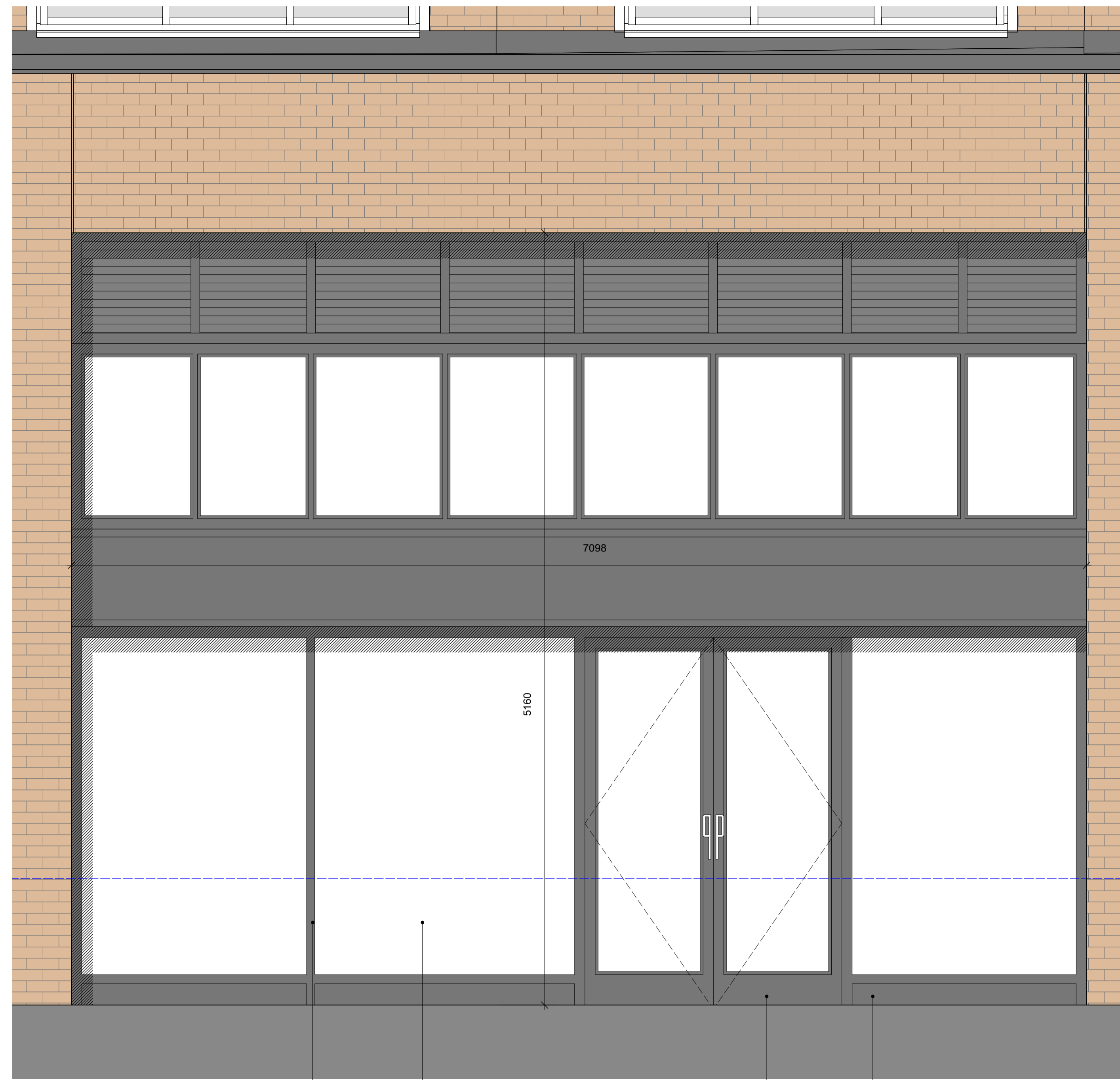
**Colour/Finish to Shopfronts**  
Curtain walling Basalt Grey (RAL 7012)

**Notes on Flood Defence/Protection**  
PHASE 2.  
Internal flood gates set between piers (fitted as part of the fitout)



3 P2B-EE-01

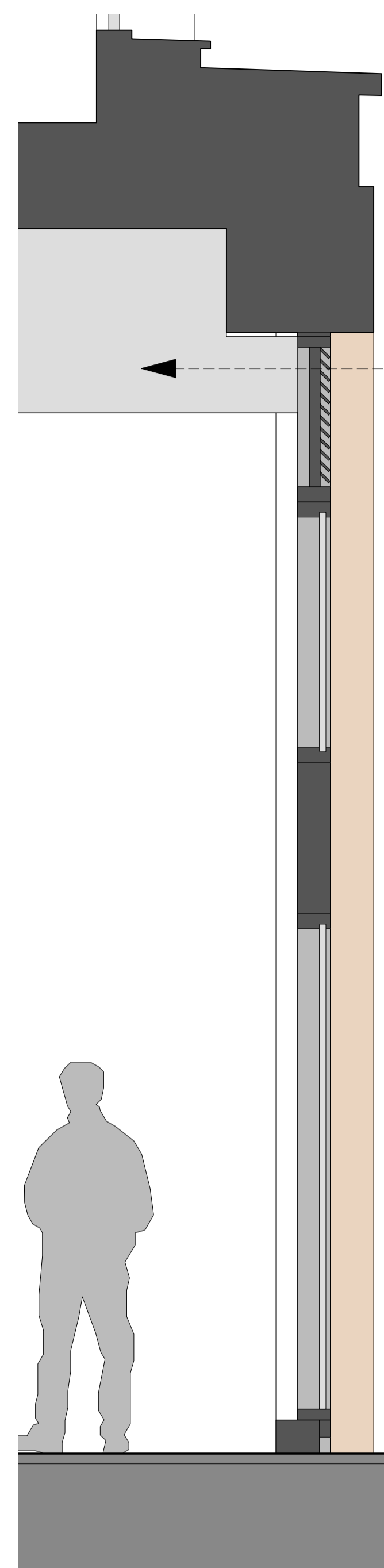
3 Block B St Thomas Street Elevation (East) - Unit 2.4  
Scale: 1:20



4 P2B-EE-02

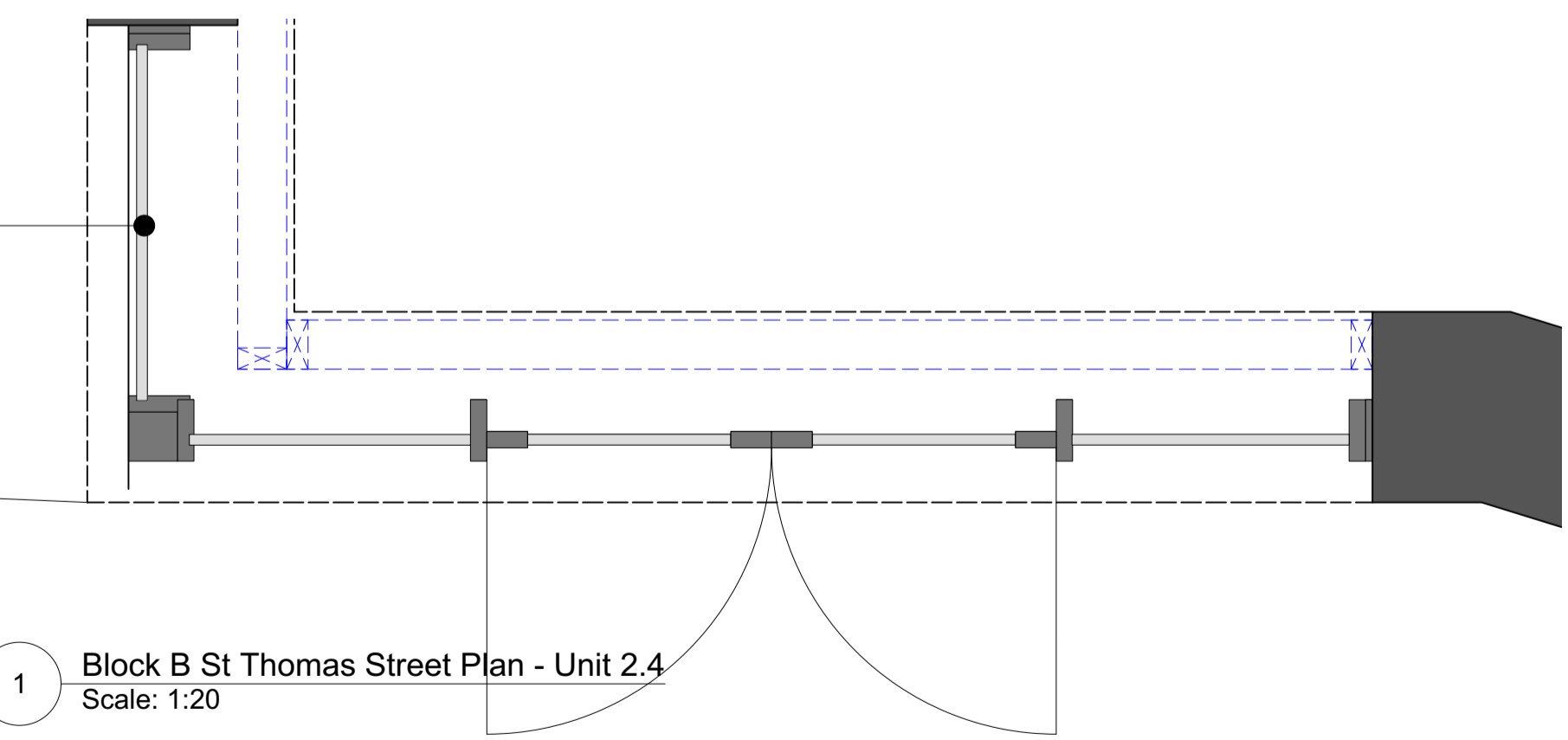
4 Block B St Thomas Street Elevation (East) - Unit 2.4  
Scale: 1:20

**Note:** Elevation taken from as-built drawings by others.  
Section line not parallel to face of window.

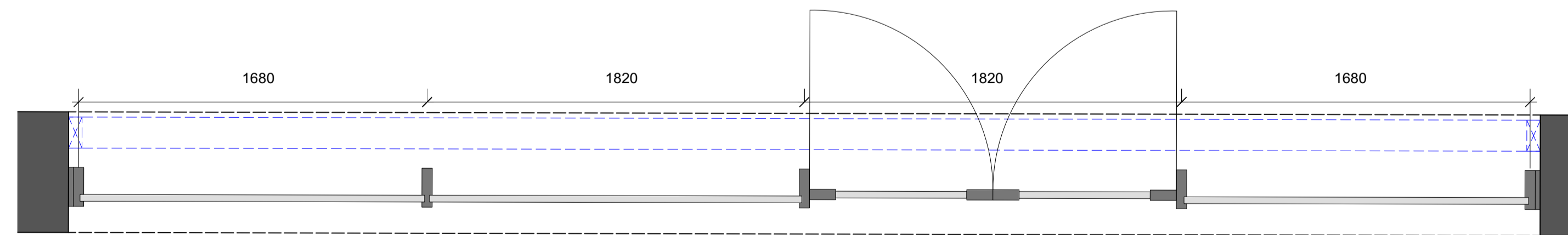


5 Block B St Thomas Street Section  
Scale: 1:20

Refer to drawing 11211-PL-311 for details of adjacent window



1 Block B St Thomas Street Plan - Unit 2.4  
Scale: 1:20



2 Block B St Thomas Street Plan - Unit 2.4  
Scale: 1:20

# PLANNING

Rev	Date	Drawn	Checked	Description
	27.06.22	AK	AK	PLANNING ISSUE

**NOTE:**  
**Ventilation** - The proposed units have been designed to flexibly incorporate ventilation areas, subject to occupant requirements. Fascia signage to be replaced with louvre where required. Louvre to match frame colour and finish.  
**Signage** - Refer to advertisement application for details of acceptable sizes and locations. All signage to be subject to separate applications  
Refer to drawings 11352-PL-105 for details of other windows in this unit  
Vent sizes shown for draft comment issue only, louvres resized following discussion with Amber Management

6 King Street Bristol BS1 4EQ  
T 0117 929 9293 E info@fm-architects.co.uk  
F 0117 929 9295 W fm-architects.co.uk

All drawings are copyright  
Report all discrepancies to project administrator  
Do not scale drawing for construction purposes  
All dimensions to be checked on site

<b>ferguson mann architects</b>			
Job Title Redcliff Quarter Frontages	Drawing Title Unit 2.4 Proposed		
Client Prime and Pasture UK Limited	Elevation (East)		
Scale 1:20 @ A1	Date 16.06.22	Drawn HW	Checked AK
Job No 11352	Drawing No PL 106	Rev	