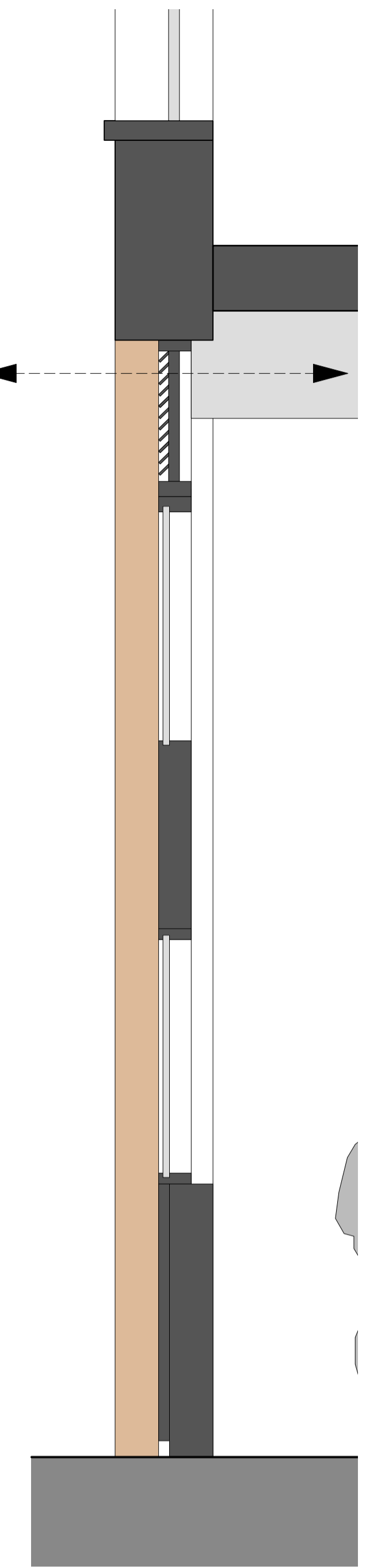


- Legend**
- 1 Brick facade
  - 2 Rendered facade
  - 3 Aluminium windows (Residential)
  - 4 Glazed balcony (Residential)
  - 5 PPC metal facade
  - 6 Principal entrance
  - 7 Secondary door
  - 8 Painted aluminium curtain walling (shop front)
  - 9 Painted aluminium glazed door
  - 10 Painted aluminium fixed panel (solid with letter box etc)
  - 11 Painted aluminium louvre panel
  - 12 Painted aluminium fascia /overpanel
  - Note** Fascia panel capable of adaption to receive additional louvres where required for kitchen extract etc.
  - 13 Signage by others (not part of this Application)
  - 14 Clear laminated glass (double glazed)
  - 15 Upstand / stallriser
  - 16 Painted aluminium solid door
  - 17 Painted aluminium solid panel

**Colour/Finish to Shopfronts**  
Curtain walling Basalt Grey (RAL 7012)

**Notes on Flood Defence/Protection**

PHASE 2.  
Internal flood gates set between piers (fitted as part of the fitout)

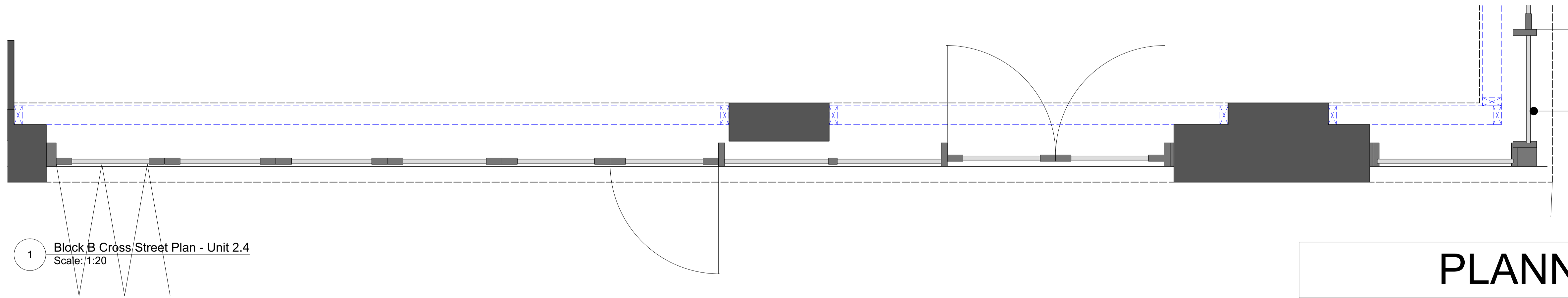


2 Block B Cross Street Elevation (South) - Unit 2.4  
Scale: 1:20

P2B-SE-03

P2B-SE-04

3 Block B Cross Street Section  
Scale: 1:20



1 Block B Cross Street Plan - Unit 2.4  
Scale: 1:20

# PLANNING

Rev	Date	Drawn	Checked	Description
A	15.06.22	HW	AK	FMA Amendments following meeting 14.06.22
B	16.06.22	HW	AK	FMA Amendments

**NOTE:**  
**Ventilation** - The proposed units have been designed to flexibly incorporate ventilation areas, subject to occupant requirements. Fascia signage to be replaced with louvre where required. Louvre to match frame colour and finish.  
**Signage** - Refer to advertisement application for details of acceptable sizes and locations. All signage to be subject to separate applications  
refer to drawings 11352-PL-106 for details of other windows in this unit

6 King Street Bristol BS1 4EQ  
T 0117 929 9293 E info@fm-architects.co.uk  
F 0117 929 9295 W fm-architects.co.uk

All drawings are copyright  
Report all discrepancies to project administrator  
Do not scale drawing for construction purposes  
All dimensions to be checked on site

<b>ferguson mann architects</b>			
Job Title <b>Redcliff Quarter Frontages</b>		Drawing Title <b>Unit 2.4</b>	
Client <b>Prime and Pasture UK Limited</b>		Elevation (South)	
Scale <b>1:20 @ A1</b>	Date <b>16.06.22</b>	Drawn <b>HW</b>	Checked <b>AK</b>
Job No <b>11352</b>	Drawing No <b>PL 105</b>	Rev <b>B</b>	