

astley.

Delivering creative brand environments
through signage, print and digital solutions



Newhouse Distribution Centre - Dekit facility



Address: Co-op

Newhouse

Drg: G_78878

Title: Ext Signage

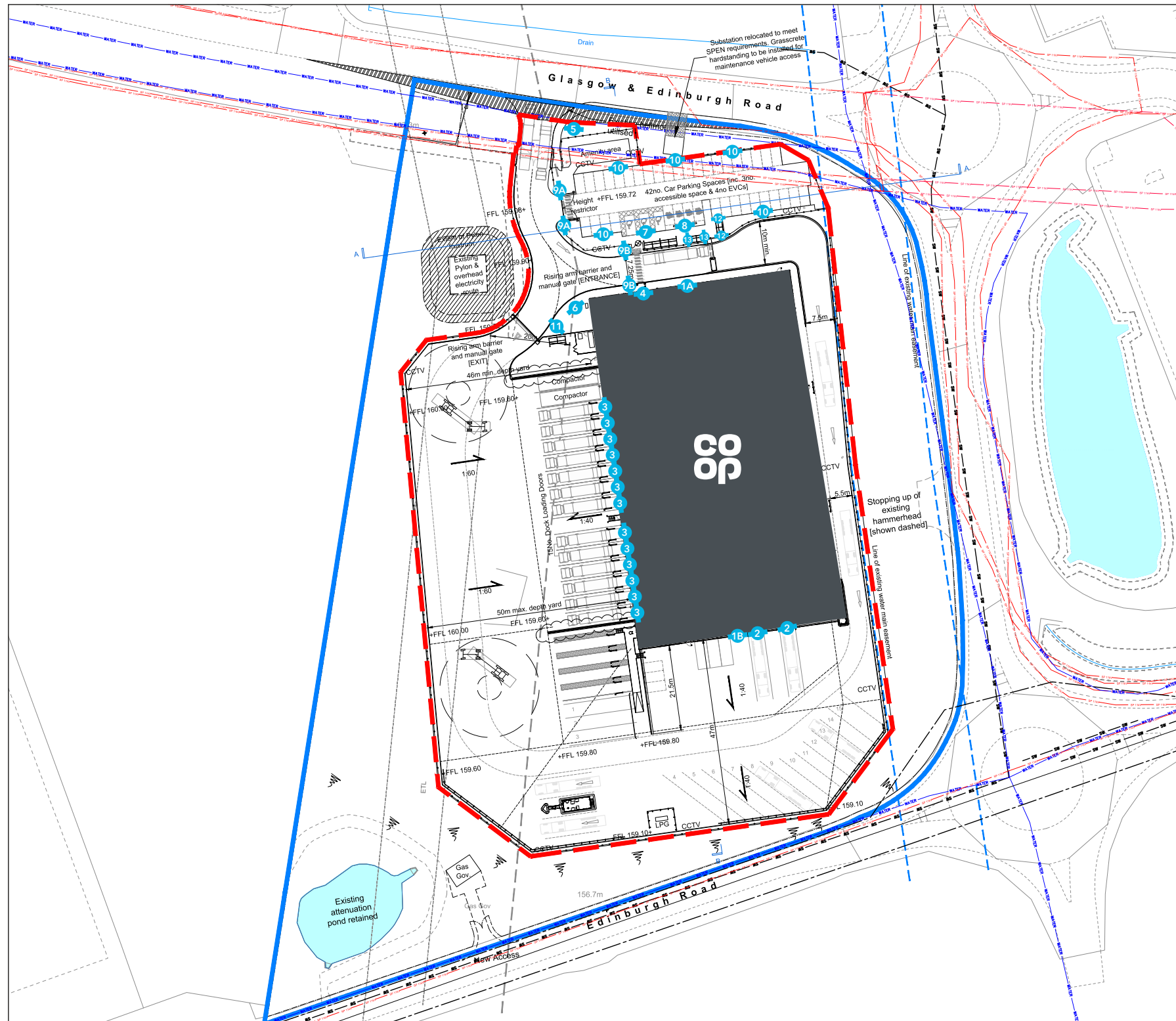
Visual Status: FIM APPROVED

Drg by: PT Date: 04.07.22

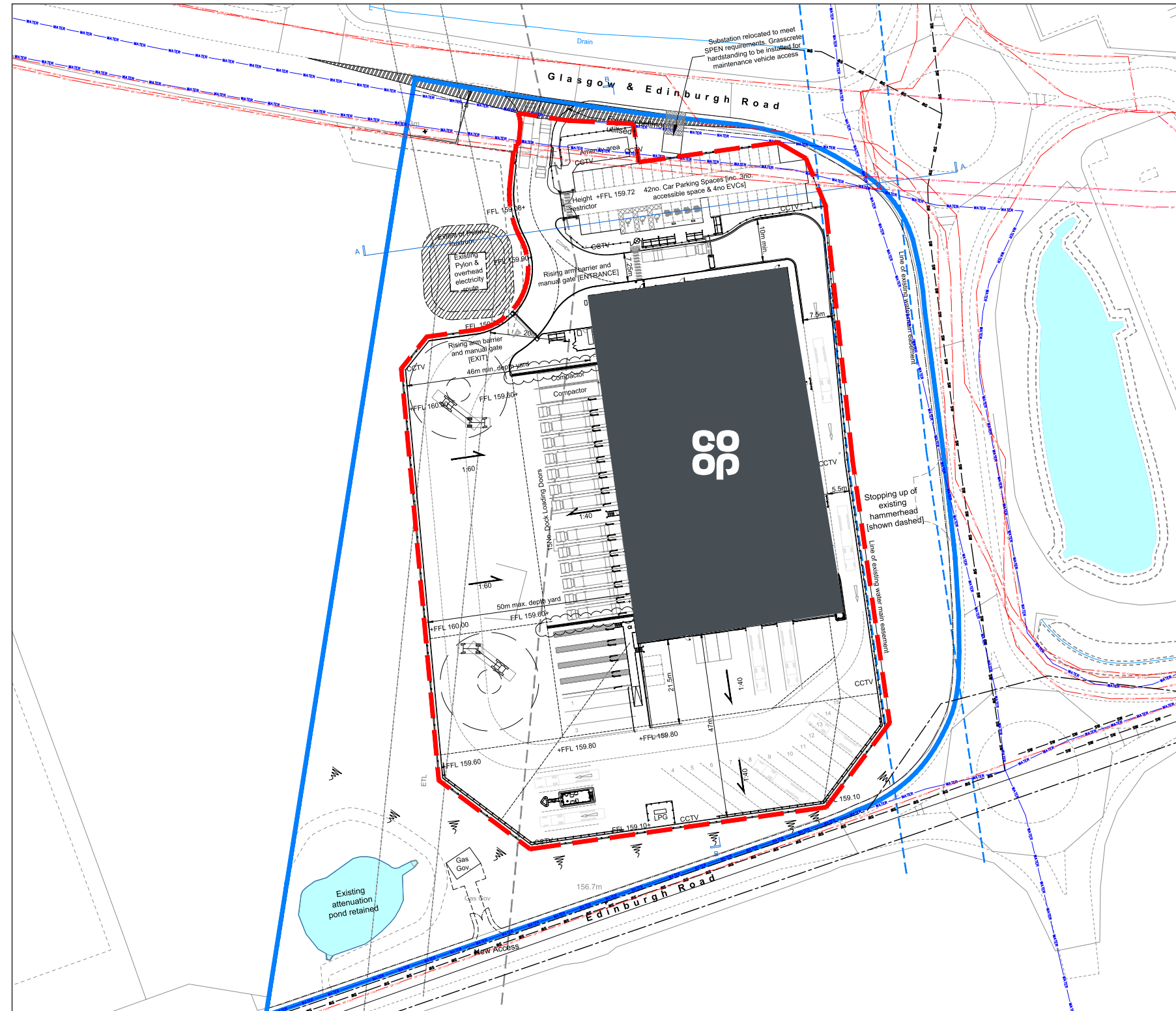
[illegible]

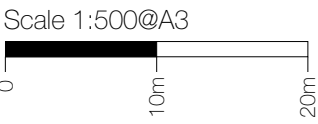


Location Plan



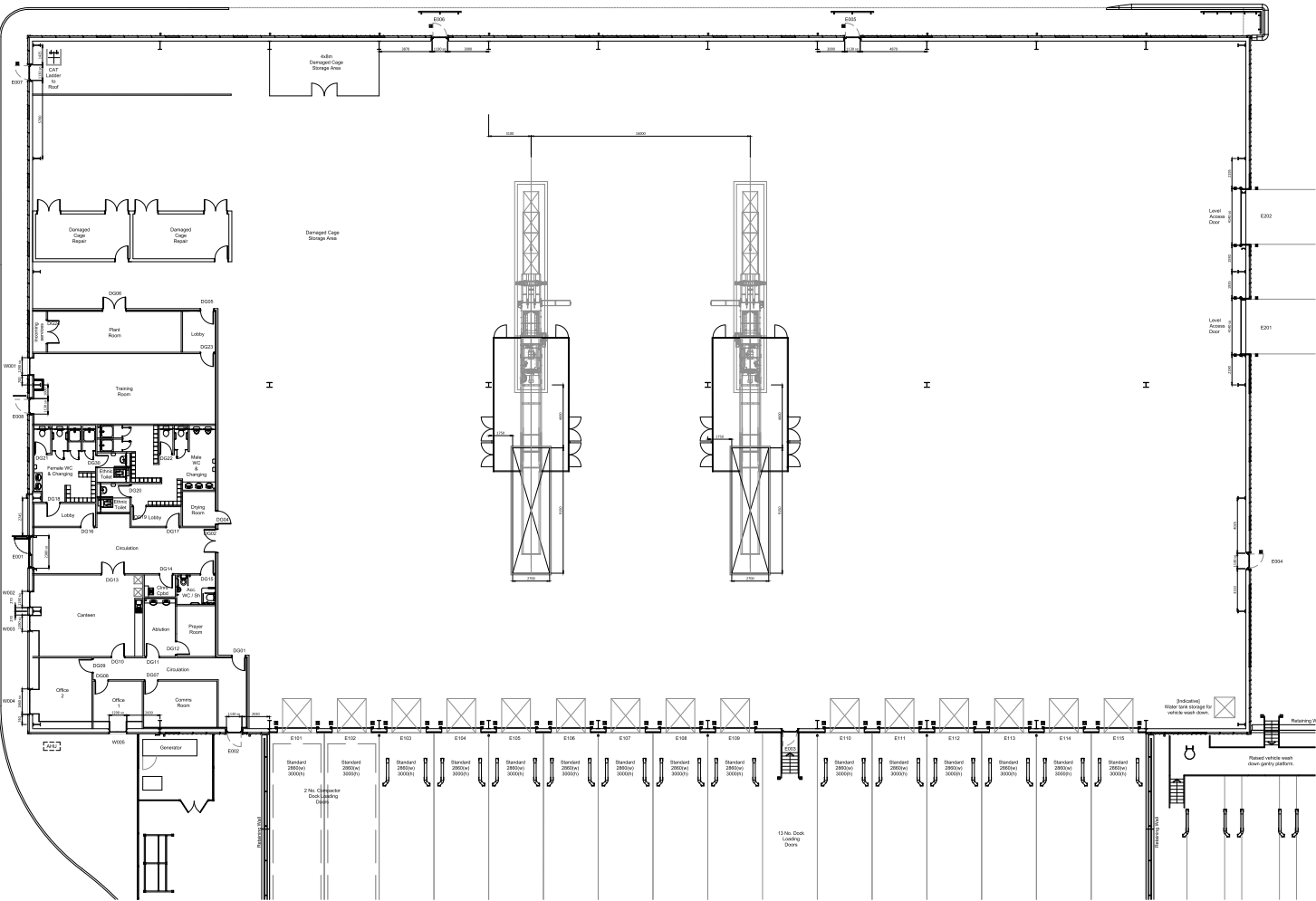
- 1** - 3500mm face illuminated logo
- 2** - Ramp signs
- 3** - Bay numbers
- 4** - Entrance sign
- 5** - Twin leg post sign
- 6** - Twin leg post sign
- 7** - Disabled sign
- 8** - EV sign
- 9** - Pedestrian crossing sign
- 10** - Visitor & colleague
- 11** - Exit / No entry
- 12** - Smoking area
- 13** - Vaping area



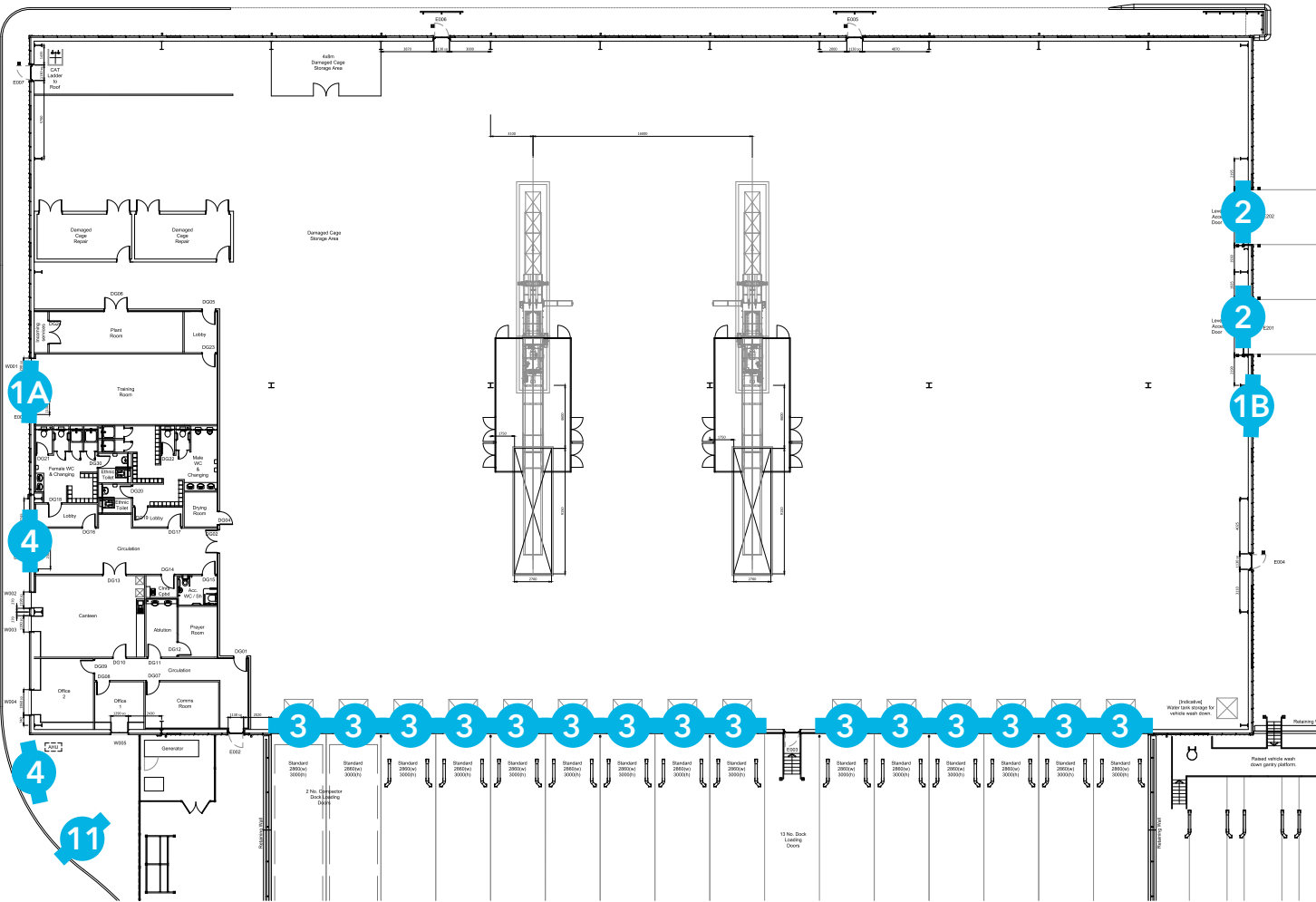


Plan View

Existing Block Plan
- scale 1:500 @ A3



Proposed Block Plan
- scale 1:500 @ A3

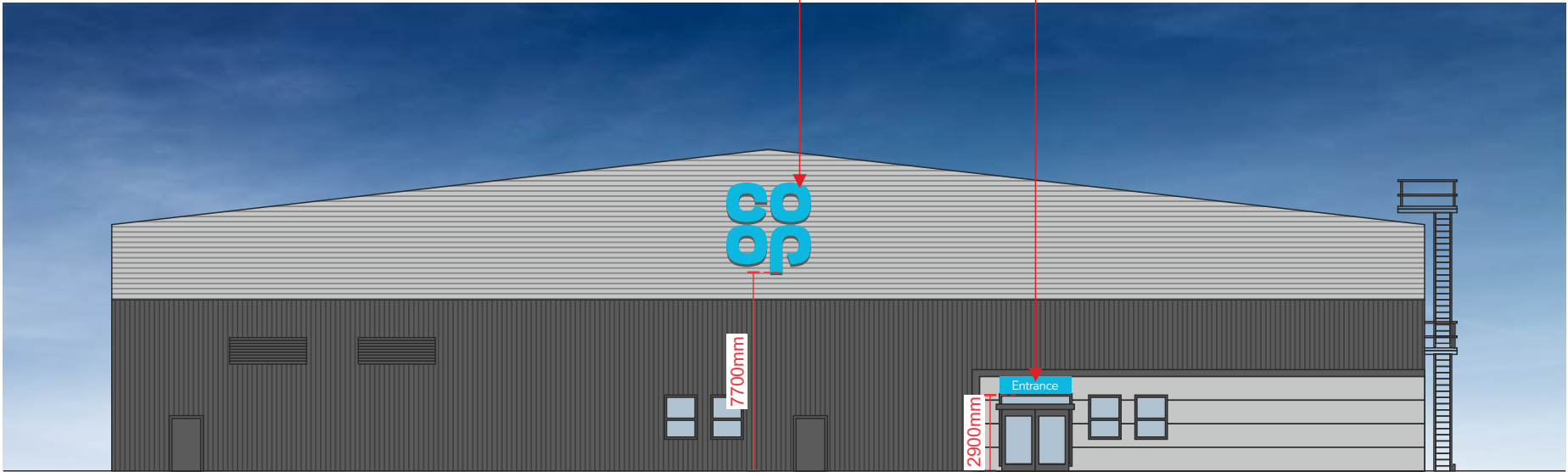


- | | | |
|---|-------------------------------------|-----------------------------|
| 1 - 3500mm face illuminated logo | 6 - Twin leg post sign | 11 - Exit / No entry |
| 2 - Ramp signs | 7 - Disabled sign | 12 - Smoking area |
| 3 - Bay numbers | 8 - EV sign | 13 - Vaping area |
| 4 - Entrance sign | 9 - Pedestrian crossing sign | |
| 5 - Twin leg post sign | 10 - Visitor & colleague | |

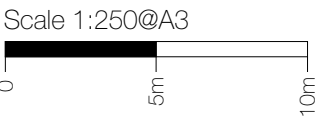


Existing Elevation

- ITEM 1A**
3500mm high
face illuminated flexface logo
2no 13amp fused spurs directly behind the sign position
weight - 13.5kg/m2
- ITEM 4**
2800 x 670mm dibond panel.

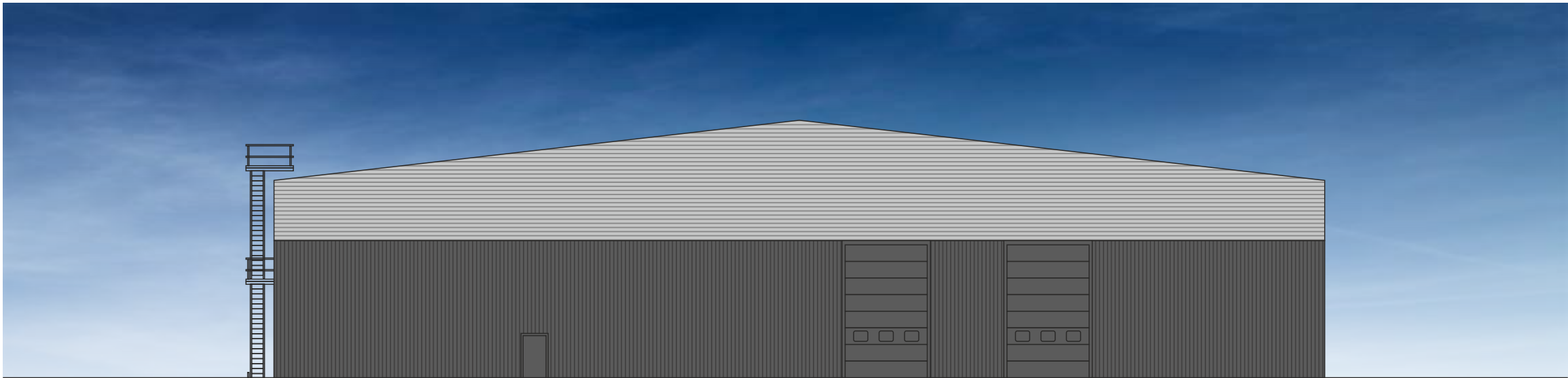


Proposed Elevation



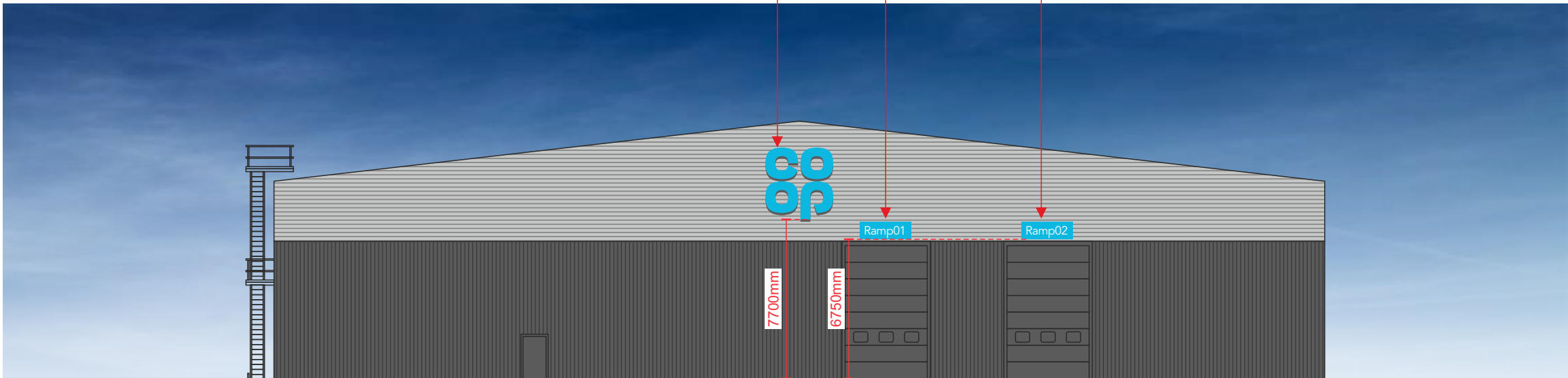
East Elevation





Existing Elevation

- ITEM 1A**
3500mm high
face illuminated flexface logo
2no 13amp fused spurs directly behind the sign position
weight - 13.5kg/m2
- ITEM 2**
2500 x 830mm dibond panel.

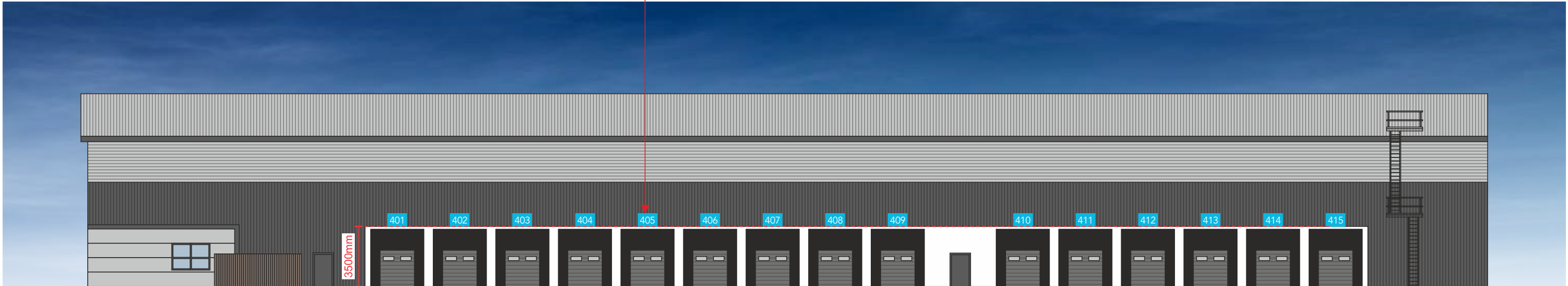


Proposed Elevation

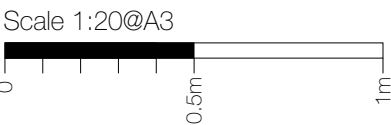


Existing Elevation

ITEM 3
15no. 1250 x 830mm dibond panel.



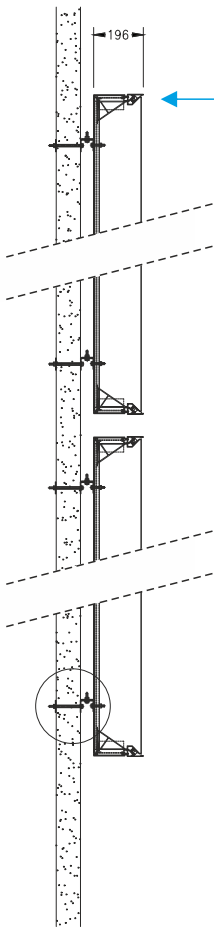
Proposed Elevation



Building signage specification

Item 1

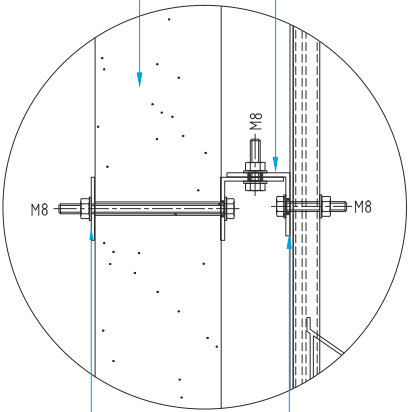
- Item 1A - Height from FFL to underside of sign being: 7700mm
- Item 1B - Height from FFL to underside of sign being: 7700mm



2No. new set of shaped fabricated aluminium individual flex face letters, powder coated silver Ral 9006, faces from blue flex face skin and internally illuminated by means of white LED's, giving full face illumination, giving static illumination less than 300 cd/m2.

Building substrate TBC

50 x 5 aluminium angle hanging rail, bolted to signcase through internal support, slotted to accept bolt. PPC to match background

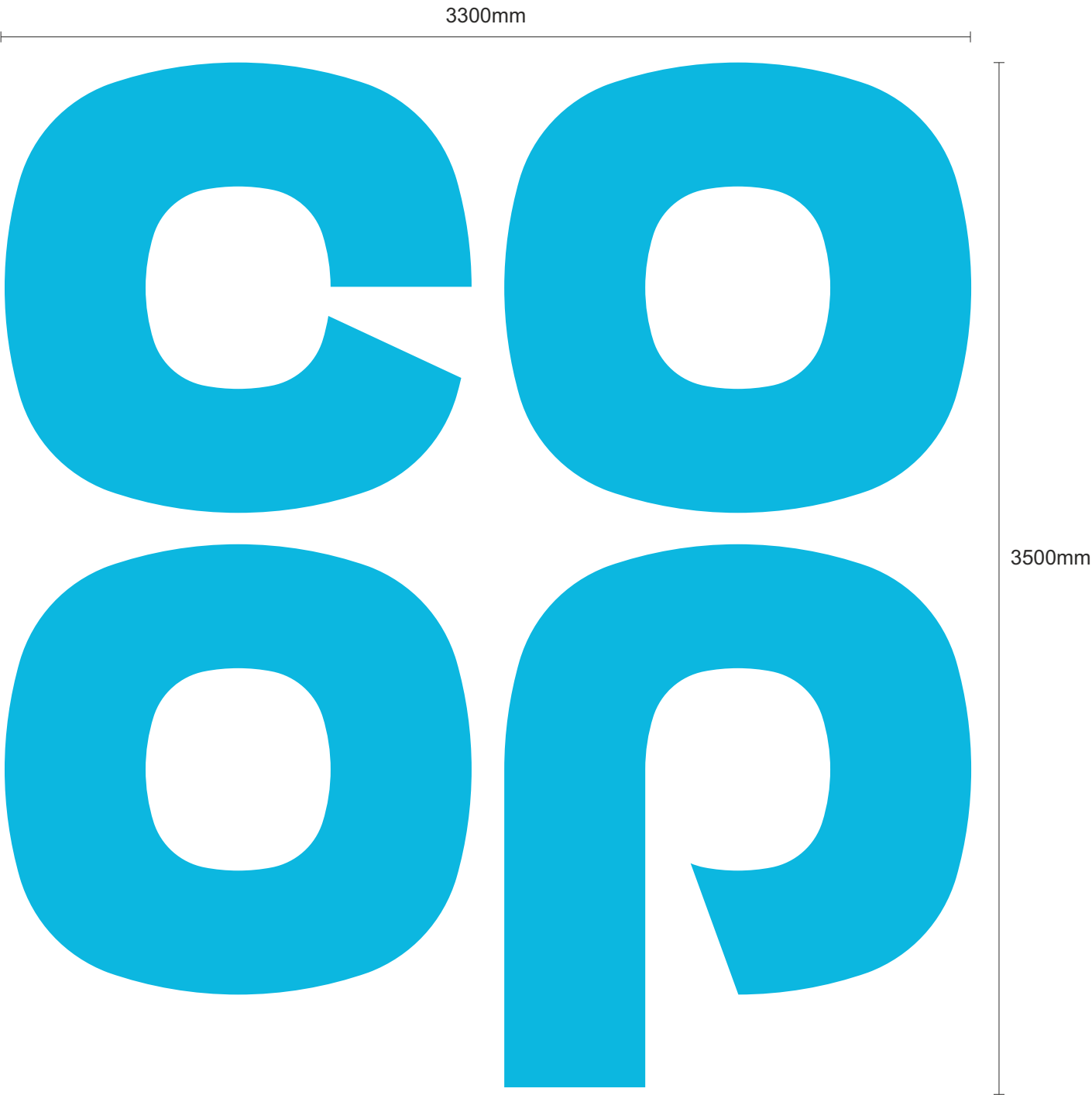


Rails bolted to building to locate internal support or internals plates.

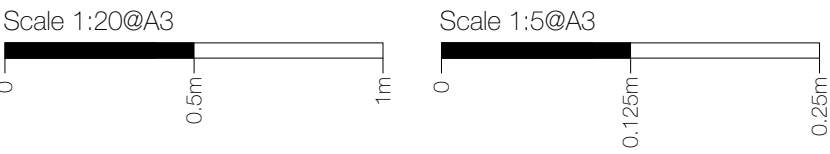
100 x 6.35mm Aluminium angle, wall rail c/w M10x50mm bolts.

NOTE - CONSTRUCTION DETAILS TO BE CONFIRMED. STRUCTURAL CALCULATIONS MAYBE REQUIRED.

Weights
- TBC

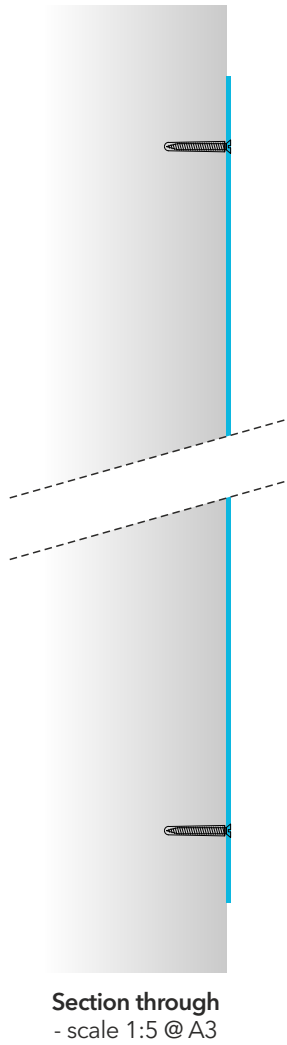


scale 1:20 @ A3



Ramp signage specification

Item 2



ITEM 2
2No 830 x 2500mm dibond panels face applied with white vinyl graphics.
Face fixed to wall, with colour matching caps.

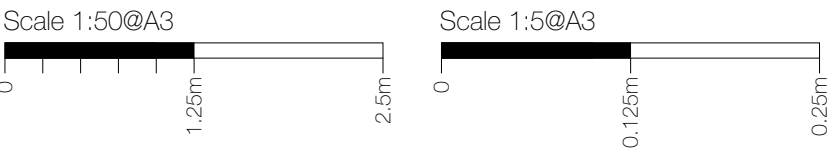
Non-illuminated.

Height from FFL to underside of sign being: 6750mm



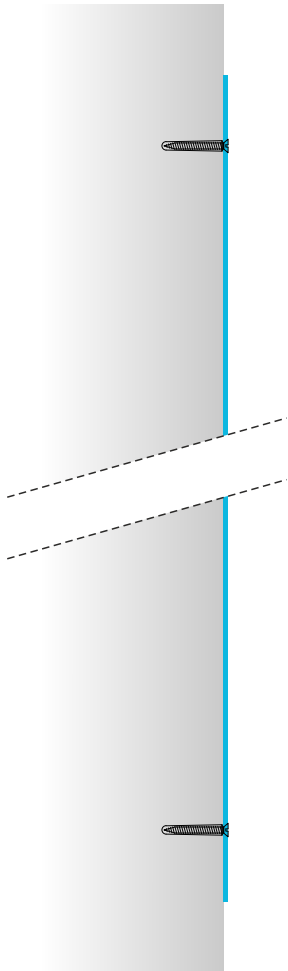
Face View
- scale 1:20 @ A3





Bay numbers specification

Item 3

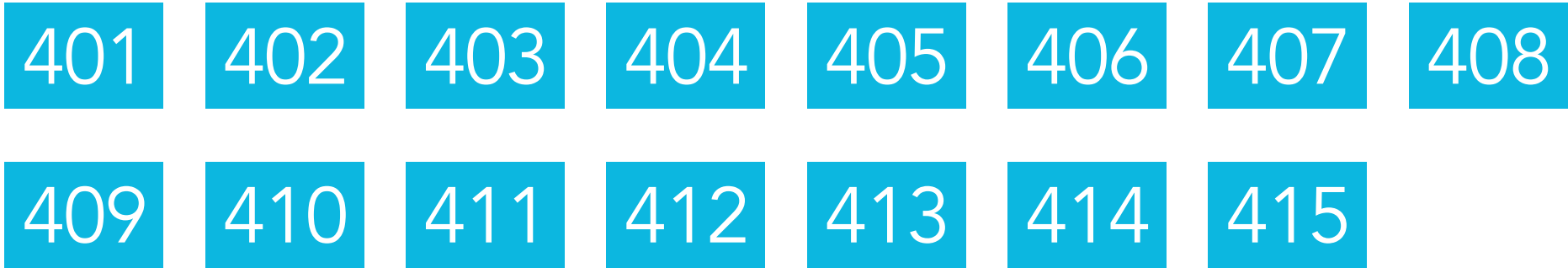


Section through
- scale 1:5 @ A3

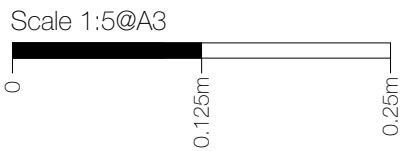
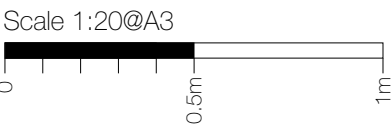
ITEM 3
15No 1250 x 830mm dibond panels face applied with white vinyl graphics.
Face fixed to wall, with colour matching caps.

Non-illuminated.

Height from FFL to underside of sign being: 3500mm

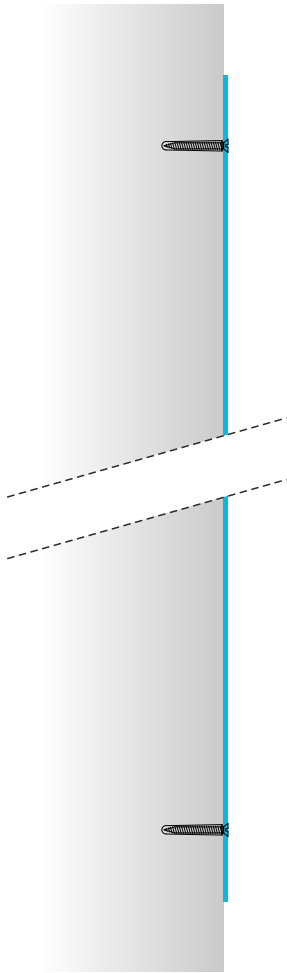


Face View
- scale 1:50 @ A3



Entrance signage specification

Item 4



Section through
- scale 1:5 @ A3

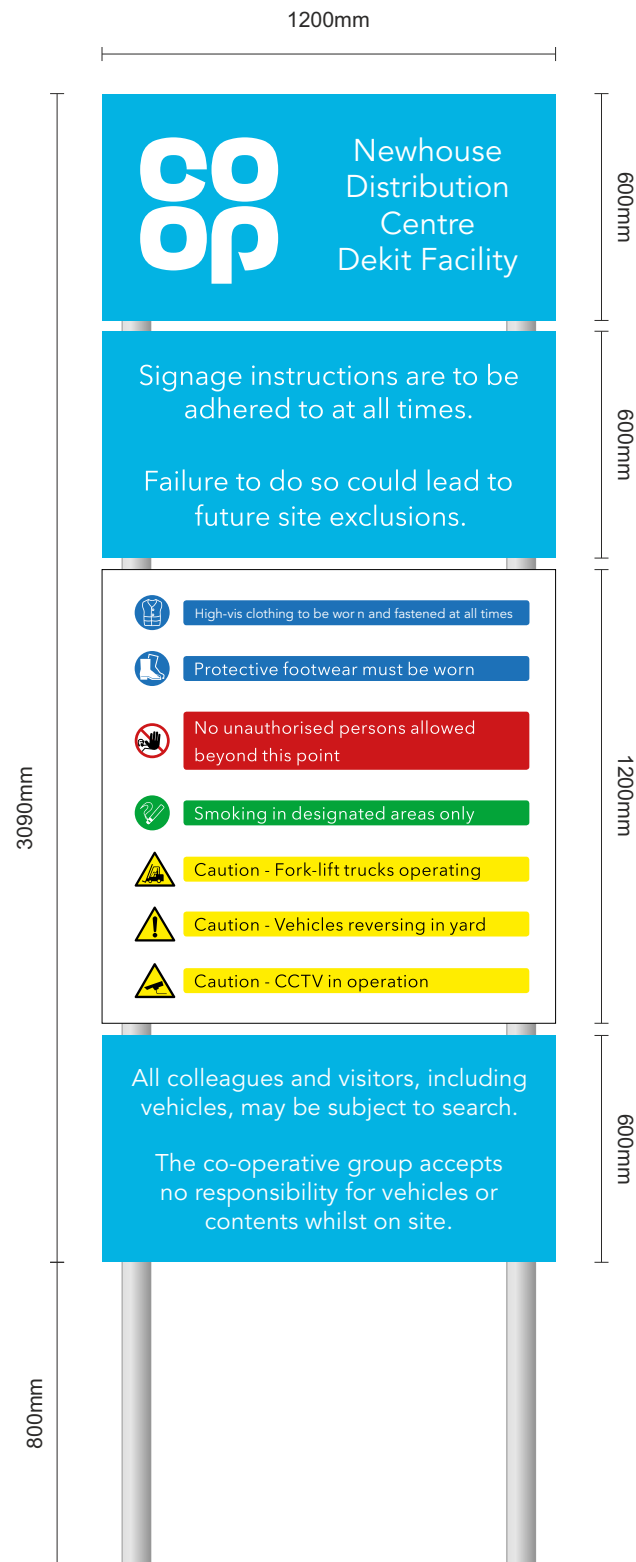
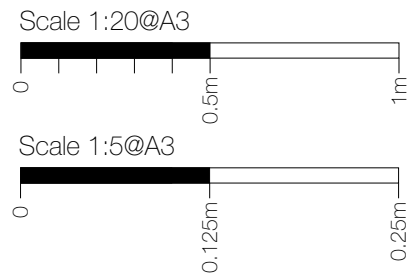
ITEM 4
1No 2800 x 670mm dibond panels face applied with white vinyl graphics.
Face fixed to wall, with colour matching caps.

Non-illuminated.

Height from FFL to underside of sign being: 2900mm .



Face View
- scale 1:20 @ A3



ITEM 5- scale 1:20 @ A3

1No. 1200x3090mm H&S sign

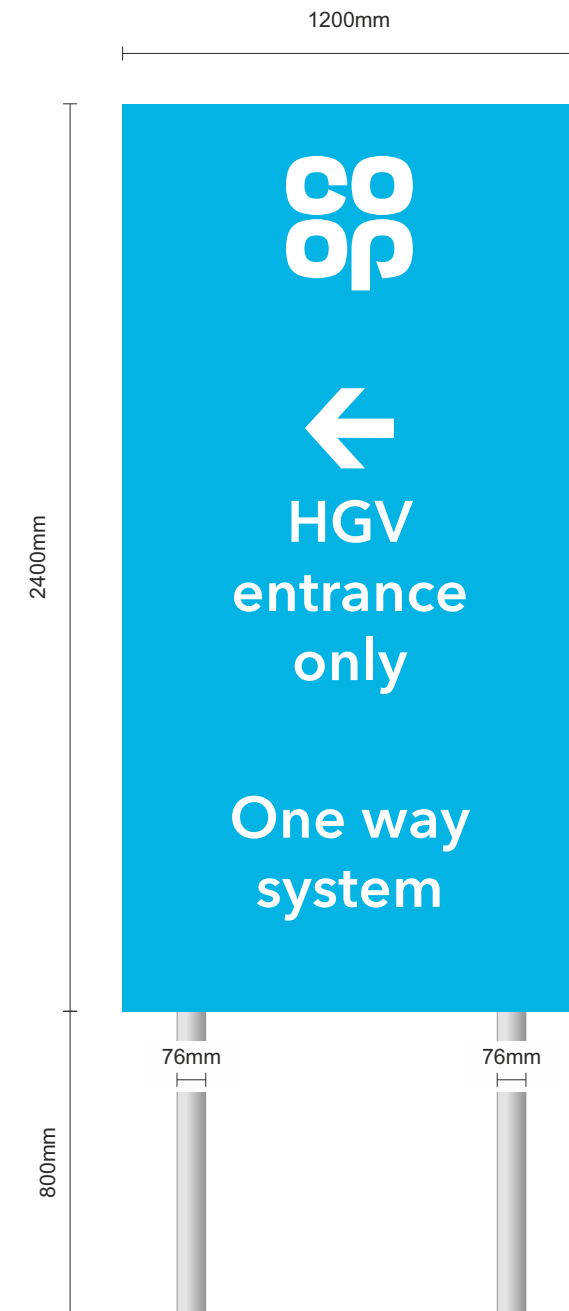
4No Flat dibond panel with applied vinyl display, anti graffiti lacquered. Panel Fitted to 2No new 76mm dia. galvanized post with signfix channel.
Posts fitted to ground by suitable means.

Non illuminated.

Height from FFL to underside of sign being: 800mm

Directional signage specification

Items 5 & 6



ITEM 6 - scale 1:20 @ A3

1No. 1200x2400mm Directional sign

1No Flat dibond panel with applied vinyl display, anti graffiti lacquered. Panel Fitted to 2No new 76mm dia. galvanized post with signfix channel.
Posts fitted to ground by suitable means.

Non illuminated.

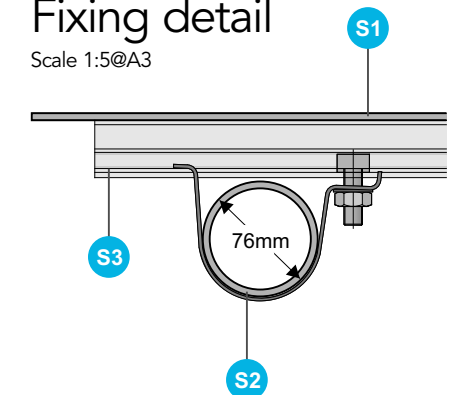
Height from FFL to underside of sign being: 800mm

Specification

- S1** 2mm thick flat aluminium panel with rounded edges. Panel powder coated silver 9006 glass and faced with vinyl graphics.
- S2** 1No. 76mm Dia. circular section mild steel post.
- S3** Signfix channel & clips.

Fixing detail

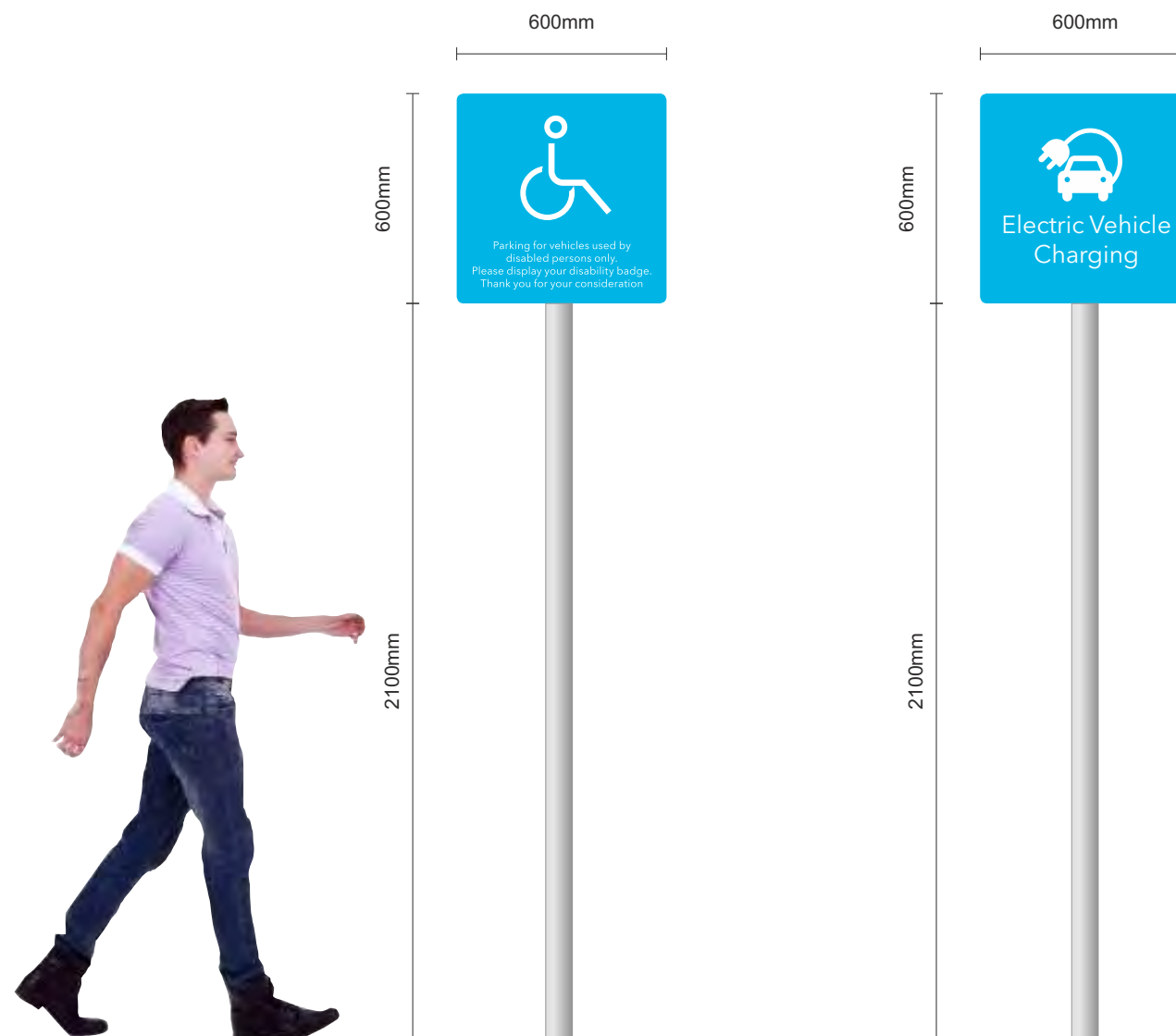
Scale 1:5@A3





Car park signage specification

Items 7 & 8

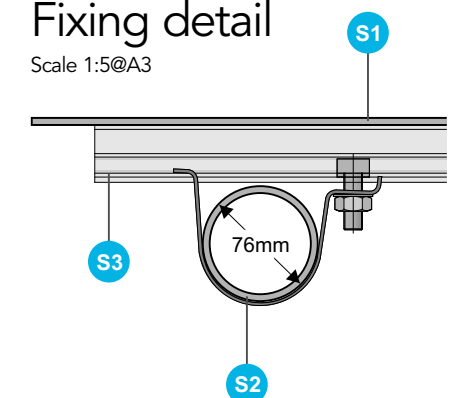


Specification

- S1** 2mm thick flat aluminium panel with rounded edges. Panel powder coated silver 9006 glass and faced with vinyl graphics.
- S2** 1No. 76mm Dia. circular section mild steel post.
- S3** Signfix channel & clips.

Fixing detail

Scale 1:5@A3



ITEM 7 - scale 1:20 @ A3

1No. 600x600mm new car park sign.

Flat dibond panel with applied vinyl display, anti graffiti lacquered, rounded corners. Panel Fitted to a new 76mm dia. steel post with signfix channel. Post powder coated Ral 7043 traffic grey and fitted to ground by suitable means.

Non illuminated. .

Height from FFL to underside of sign being: 2100mm

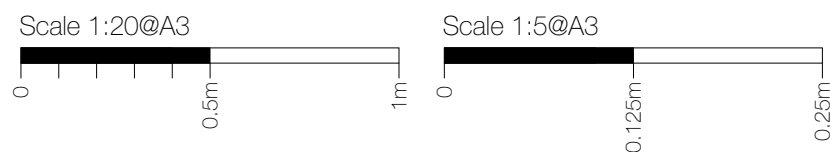
ITEM 8 - scale 1:20 @ A3

1No. 600x600mm new car park sign.

Flat dibond panel with applied vinyl display, anti graffiti lacquered, rounded corners. Panel Fitted to a new 76mm dia. steel post with signfix channel. Post powder coated Ral 7043 traffic grey and fitted to ground by suitable means.

Non illuminated. .

Height from FFL to underside of sign being: 2100mm



Car park signage specification

Items 9A, 9B & 10

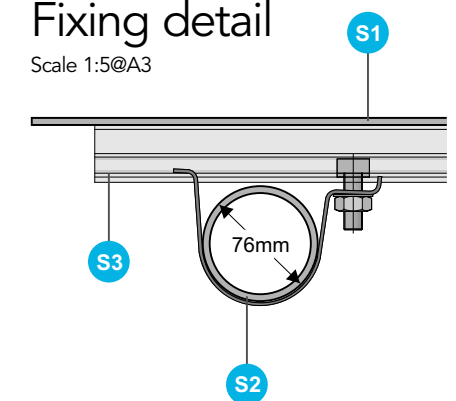


Specification

- S1** 2mm thick flat aluminium panel with rounded edges. Panel powder coated silver 9006 glass and faced with vinyl graphics.
- S2** 1No. 76mm Dia. circular section mild steel post.
- S3** Signfix channel & clips.

Fixing detail

Scale 1:5@A3



ITEM 9A - scale 1:20 @ A3

1No. 600x680mm Double sided pedestrian crossing sign

Flat dibond panel with applied vinyl display, anti graffiti lacquered, rounded corners. Panel Fitted to a new 76mm dia. steel post with signfix channel. Post powder coated Ral 7043 traffic grey and fitted to ground by suitable means.

Non illuminated. .

Height from FFL to underside of sign being: 2100mm

ITEM 9B - scale 1:20 @ A3

1No. 600x680mm Single sided pedestrian crossing sign

Flat dibond panel with applied vinyl display, anti graffiti lacquered, rounded corners. Panel Fitted to a new 76mm dia. steel post with signfix channel. Post powder coated Ral 7043 traffic grey and fitted to ground by suitable means.

Non illuminated. .

Height from FFL to underside of sign being: 2100mm

ITEM 10- scale 1:20 @ A3

5No. 600x1200mm new car park sign.

Flat dibond panel with applied vinyl display, anti graffiti lacquered, rounded corners. Panel Fitted to a new 76mm dia. steel post with signfix channel. Post powder coated Ral 7043 traffic grey and fitted to ground by suitable means.

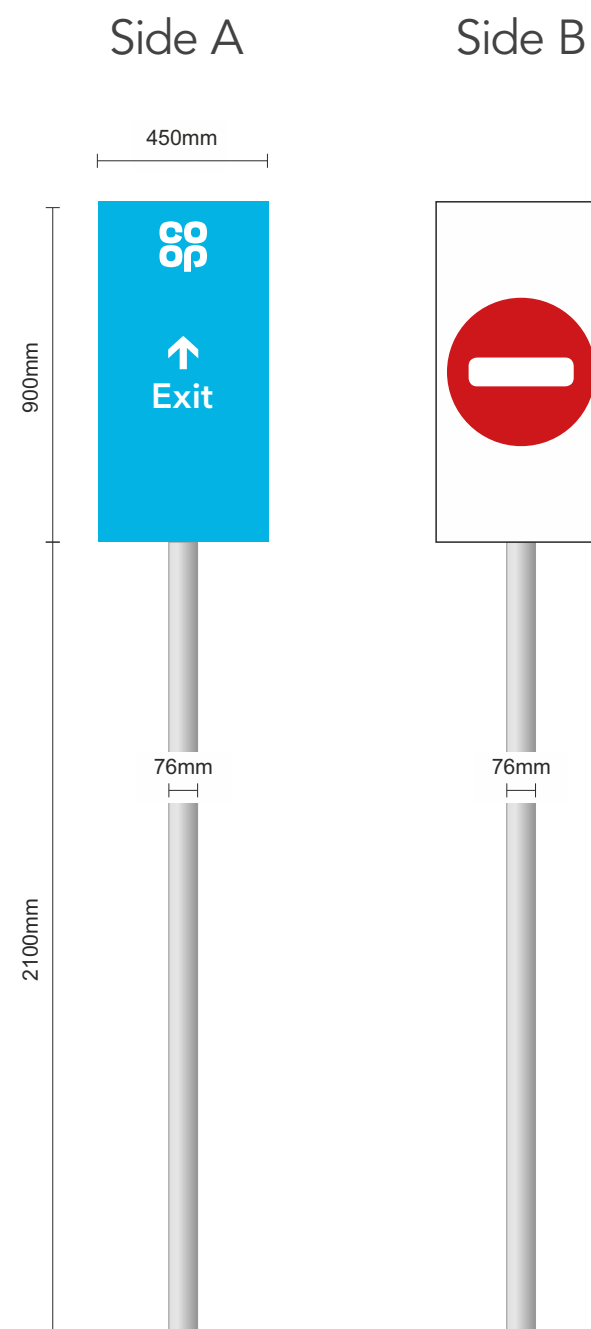
Non illuminated. .

Height from FFL to underside of sign being: 180mm



Car park signage specification

Item 11

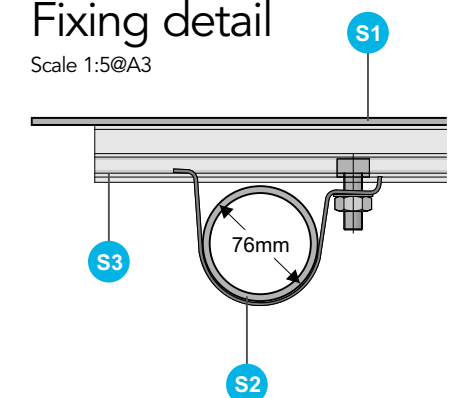


Specification

- S1** 2mm thick flat aluminium panel with rounded edges. Panel powder coated silver 9006 glass and faced with vinyl graphics.
- S2** 1No. 76mm Dia. circular section mild steel post.
- S3** Signfix channel & clips.

Fixing detail

Scale 1:5@A3



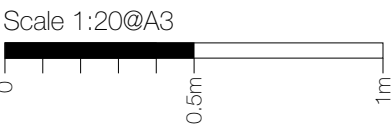
ITEM 11 - scale 1:20 @ A3

1No. 900x450mm Double sided directional / No entry sign

Flat dibond panel with applied vinyl display, anti graffiti lacquered. Panel Fitted to a new 76mm dia. steel post with signfix channel. Post powder coated Ral 7043 traffic grey and fitted to ground by suitable means.

Non illuminated. .

Height from FFL to underside of sign being: 2100mm



Car park signage specification

Items 12 & 13



Item 12 - scale 1:20@ A3

1No. 210x297mm double sided smoking sign

double sided digitally printed graphics applied internally to smoking shelter glazing.

Non illuminated.

Height from FFL to underside of sign being: 1400mm

Position TBC



Item 13 - scale 1:20@ A3

1No. 210x297mm double sided vaping sign

double sided digitally printed graphics applied internally to vaping shelter glazing.

Non illuminated.

Height from FFL to underside of sign being: 1400mm

Position TBC